

**Explosion Proof 1080p HD Camera w/ Built-in LED - Optical & Digital Zoom - IP67 - 120-277V
Stepped Down to 24V - 50' 12/4 SOOW w/ Disconnect
EXPCMR-ALG-OZ-IC-1080P-1XLE3-5C-QD-50C-12.4-M1**

Please see last page for supporting documentation for this product(certificates, CAD files & drawings, IES files, wiring diagrams, etc).



EXPCMR-ALG-OZ-IC-1080P-1XLE3-5C-QD-50C-12.4-M1 Explosion Proof Remote Observation Camera w/ Built-in LED

Dimensions: -

Camera Weight: -

LED Light Watts: 12 W

Voltage: 120-277 V AC Stepped Down to 24 V DC

Image Sensor: CMOS

Signal System: NTSC

Connectors: Terminal Strips

Effective Pixels: 1956(H) * 1266(V)

Min. Illumination: 0.1 Lux @ F1.2 AGC On / 0 Lux w/ IR

Shutter Speed: 1/25(1/30s) to 1/50,000s

Lens: 5-50mm Focal Length

Angle of View: 90°

Day/Night: ICR

Video Framerate: 1080p @ 30fps

Video Output: Analog over Copper Wire

Signal to Ratio: >62 dB

Language: English

LED Light Lumens: 720 Lumens

Ambient Temperature Range: -10°C to +60°C

Housing Materials: Aluminum

Lens Material: Tempered Glass

Mounting: Adjustable Bracket

Cord Configuration: 60' 12/4 SOOW Cord w/ Flying Leads - 5' 12/4 SOOW Cord Between Camera and EXP Plug/EXP Connector, 50' 12/4 SOOW Cord to Transformer, 5' 12/4 SOOW Cord w/ General Area Cord Cap, BNC Connector

Cord Cap Options: 5-15, 6-15, 5-20, 6-20, L5-15, L6-15, L5-20, L6-20, BS1363, Schuko, or Pigtail

Wiring Hub: (2) 3/4" NPT

Quick Summary

Class I, Divisions 1 & 2, Groups B, C, D
Class I, Zones 1 & 2, Groups IIB+H2, IIA
Class II, Divisions 1 & 2, Groups E, F, G
Class III, Divisions 1 & 2
Ex db IIC Gb
Ex tb IIC Gb Db IP66
NEMA 3, 4, 4X, 7 (B, C, D), 9 (E, F, G)
IR On/off via the DVR

Special Orders- Requirements

Contact us for special requirements

Toll Free: 1-800-369-6671

Intl: 1-214-616-6180

Fax: 1-903-498-3364

E-mail: sales@larsonelectronics.com

The EXPCMR-ALG-OZ-IC-1080P-1XLE3-5C-QD-50C-12.4-M1 Explosion Proof Camera with Built-in LED Light from Larson Electronics is designed for security and remote observation in both indoor and outdoor hazardous environments. This 1080p HD high resolution security camera features a 150' range, 10x optical zoom with autofocus, and 62x digital zoom for maximum coverage and accuracy. A digital inverter supports both HD-TVI and CVBS analog output. For reliable connection to a power source, this camera is equipped with an inline waterproof step down transformer that

takes 120-277 V AC input power and steps it down to the 24 V needed to power the device. There is 50' of 12/4 SOOW cord between the camera and transformer as well as 5' of 12/4 SOOW cord extending from the transformer that is terminated in a general area cord cap.

Camera Features: The EXPCMR-ALG-OZ-IC-1080P-1XLE3-5C-QD-50C-12.4-M1 security camera provides operators in hazardous areas with crisp 1080p HD high resolution images. A 5-50mm motorized lens automatically adjusts focus, providing operators with a precise 10x optical zoom and autofocus and 62x digital zoom image. A digital inverter supports both HD-TVI and CVBS analog output to a customer provided remote mount DVR system. This 24 V camera measures a compact 12.34" x 3.96" x 4.22" and the mounting base allows for precise aiming with 90° of vertical adjustment.

Unlike other explosion proof security cameras on the market today, operators do not need to open the enclosure to change the camera's settings. Infrared functionality can be turned on/off via the DVR, greatly reducing human error and time spent in dangerous work environments.

The unit comes with built-in LED lights to support image capturing in low-light conditions and after sunset. This component is available in two lighting configurations: spot or flood. Four Cree EZBright® three watt LEDs producing 180 lumens each, for a total of 720 lumens, each are arranged in rows and paired with high purity 10 degree optics to produce a tightly focused spot beam with limited spread or light spillage. The spot configuration features a 10° beam that measures 120'L x 60'W. The explosion proof unit is powered via 120-277 V AC input power that is stepped down to 24 V DC to power the camera and to be safe in hazardous areas.

The EXPCMR-ALG-OZ-IC-1080P-1XLE3-5C-QD-50C-12.4-M1 security camera is built to perform under harsh and rugged conditions. This IP67 rated waterproof unit resists the corrosive effects of weather, dust, dirt, and humidity. This Class I Divisions 1 & 2, Class II Divisions 1 & 2, Class III Divisions 1 & 2 rated camera provides property and product security while also protecting operators with its safe and reliable explosion proof and weatherproof design.

[Click Photos to Enlarge](#)



5-15 Straight Blade Plug
15 Amp / 125 V Rated



L5-15 Twist Lock Plug
15 Amp / 125 V Rated



L6-15 Twist Lock Plug
15 Amp / 250 V Rated



UK BS1363 Straight Blade Plug
13 Amp / 250 V Rated / Internal Fuse



Intl Schuko 2-Pin Plug
16 Amp / 250 V Rated / Grounded



Flying Leads / Pigtail Wires

Wiring/Plug: This explosion proof camera system is equipped with 5 feet of 12/4 chemical and abrasion resistant SOOW cord between the camera/light and the 4-wire explosion proof plug at the other end. The encapsulated power supply box features a BNC connector for connecting the camera signal to monitor or recording device. A 4-wire explosion proof connector that attaches/connects to the explosion proof plug is equipped with 50' of 12/4 SOOW cord extending to the step down transformer that is fitted with an additional 5' of 12/4 SOOW cord terminated in an

industrial grade cord cap for easy connection to common wall outlets. Plug options include standard 5-15 15 amp straight blade plug for 110 V wall outlets with ground, standard 5-20 20 amp straight blade plug for 110 V wall outlets with ground, standard 6-15 15 amp straight blade plug for 220-240 V wall outlets with ground, standard 6-20 20 amp straight blade plug for 220-240 V wall outlets with ground, NEMA L5-15 15 amp twist lock plug for 125V twist lock outlets, NEMA L5-20 20 amp twist lock plug for 125 V twist lock outlets, NEMA L6-15 15 amp twist lock plug for 240V twist lock outlets, NEMA L6-20 20 amp twist lock plug for 240 V twist lock outlets, British BS1363 13 amp fused 3-blade plug for United Kingdom outlets, or a two pin 16 amp rated Schuko plug with ground contact and socket for European outlets up to 250 V. Alternatively, we can provide flying leads with no plug for hard wire applications or for operators who prefer to wire in user provided cord caps. Please choose pigtail option below for flying leads with no plug.

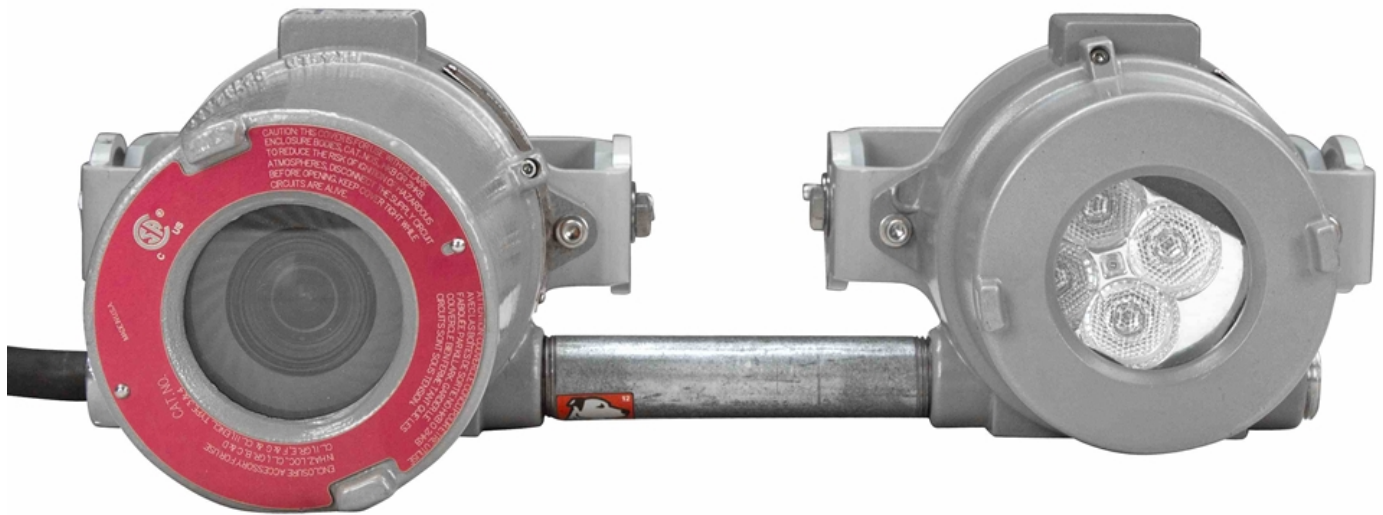
Mounting: The EXPCMR-ALG-OZ-IC-1080P-1XLE3-5C-QD-50C-12.4-M1 explosion proof security camera is secured to a flat surface, such as a ceiling or wall, using an adjustable reverse pedestal style bracket. The included mounting bracket allows 90° vertical adjustment and 360° of swivel for precision aiming.

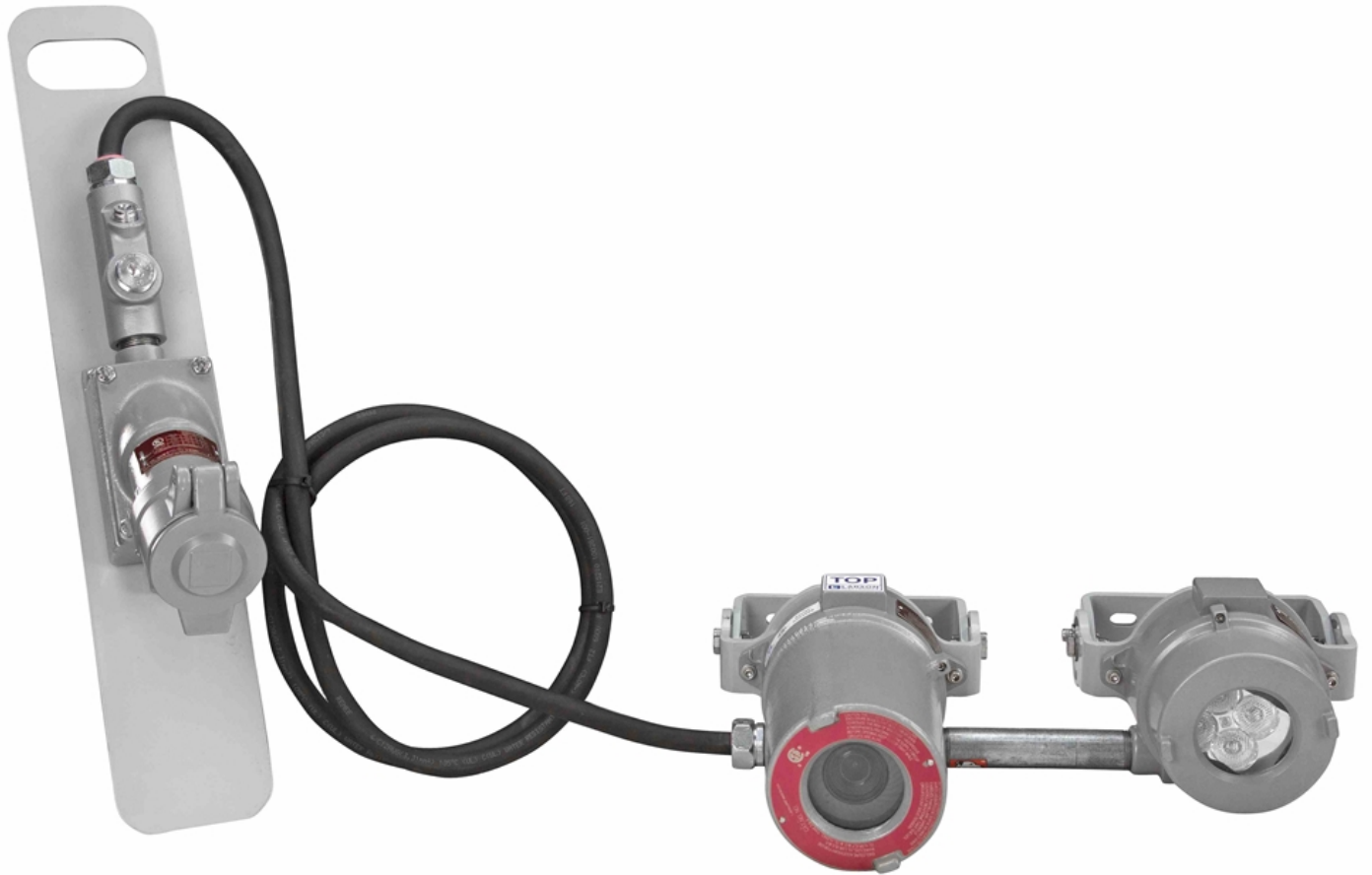
Applications: Vessel, tank and reactor monitoring, remote observation of external facilities, offshore and land based rigs, indoor and outdoor security, commercial buildings.

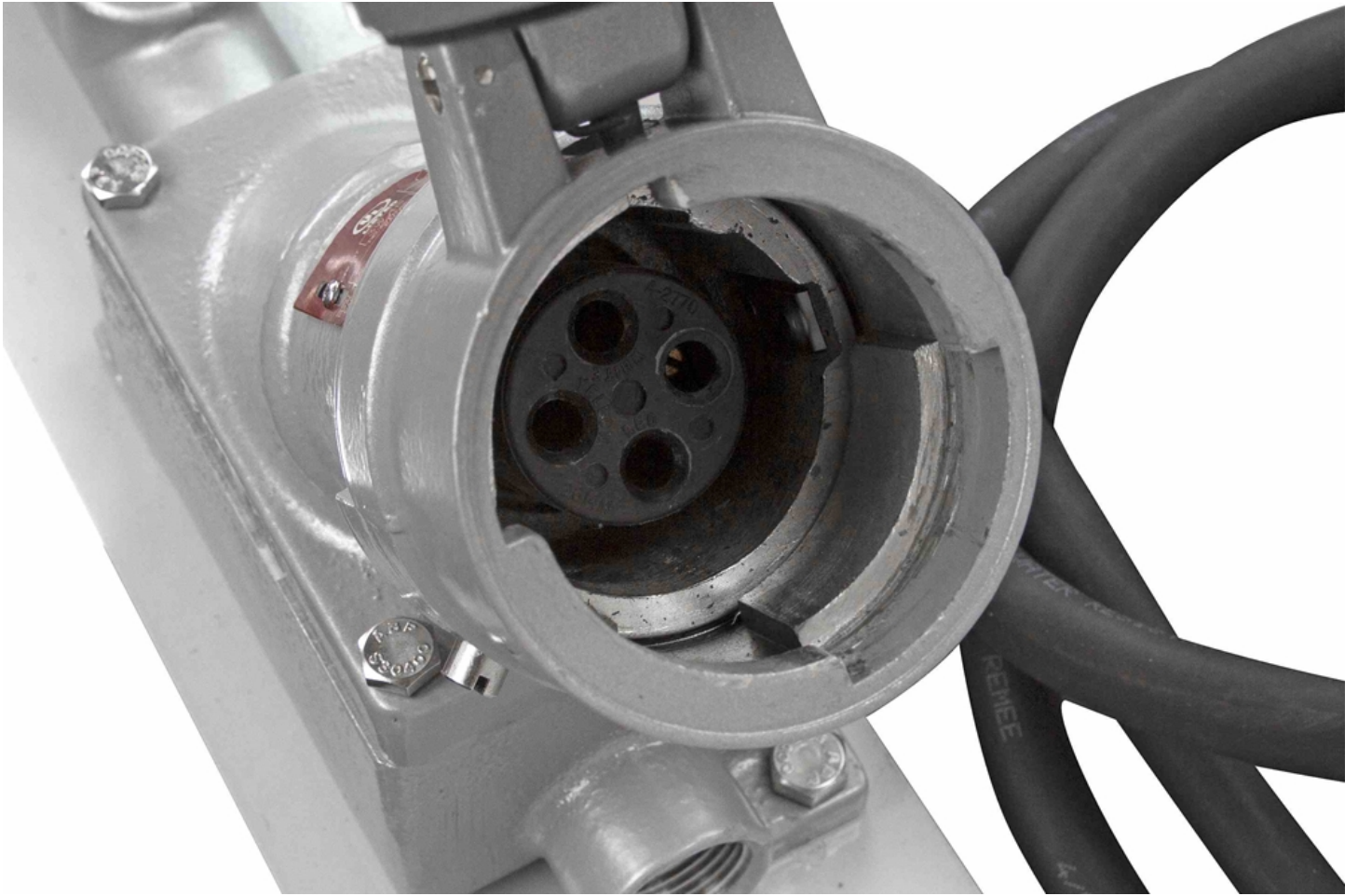
At Larson Electronics, we do more than meet your lighting needs. We also provide replacement, retrofit, and upgrade parts as well as industrial grade power accessories. Our craftsmen can custom build any lighting system and/or accessories to fit the unique demands of your operation. A commitment to honesty, quality, and dependability has made Larson Electronics a leader in the lighting and electronics business since 1973. Contact us today at 800-369-6671 or message sales@larsonelectronics.com for more information about our custom options tailored to meet your specific industry needs.

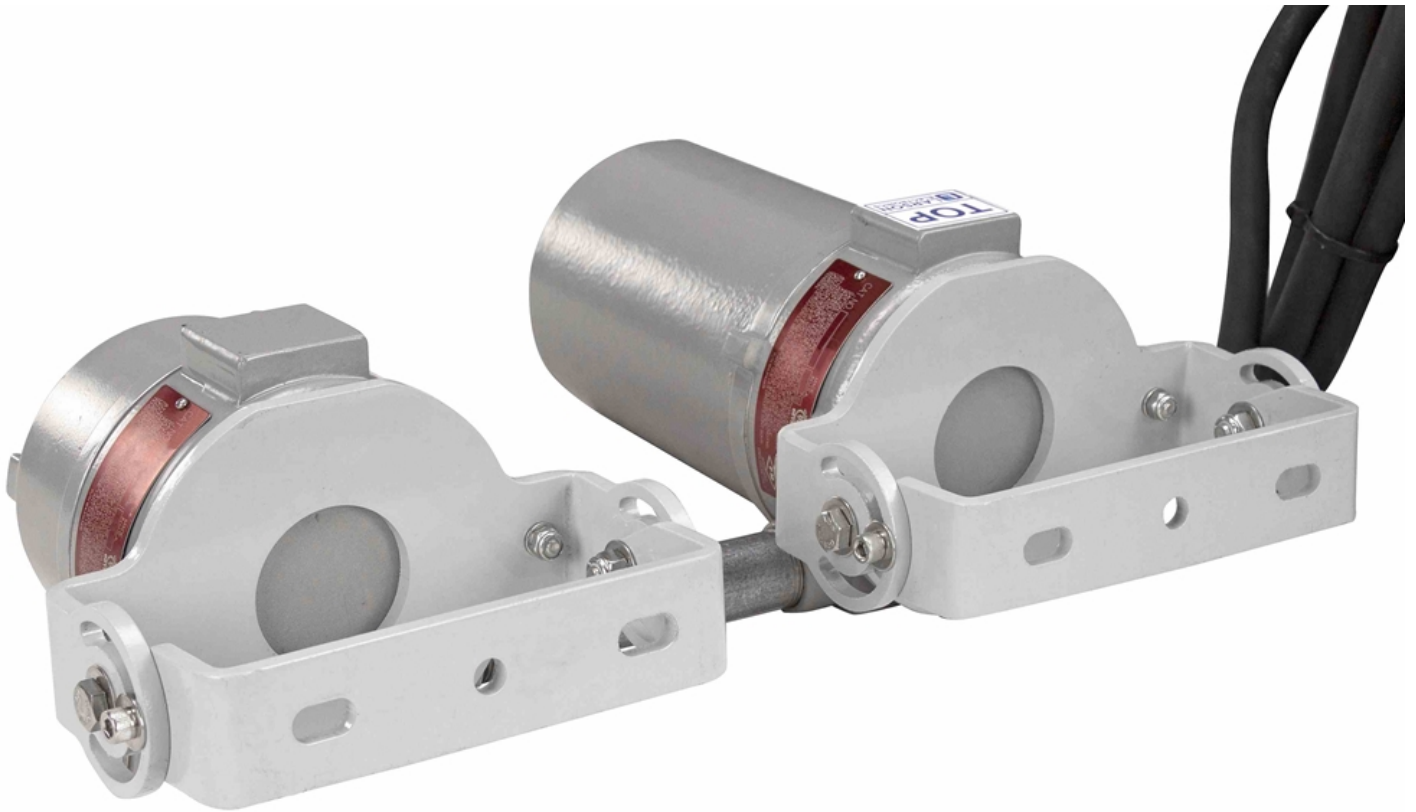


Frequently Asked Questions (FAQ)









Options:

EXPCMR-ALG-OZ-IC-1080P-1XLE3-5C-QD-50C-12.4-M1-Cord Cap

Example: EXPCMR-ALG-OZ-IC-1080P-1XLE3-5C-QD-50C-12.4-M1-5.15

Cord Cap	
5-15	-5.15
6-15	-6.15
5-20	-5.20
6-20	-6.20
L5-15	-L5.15
L6-15	-L6.15
L5-20	-L5.20
L6-20	-L6.20
BS1363	-BS1363
SCHUKO	-Schuko
PIGTAIL	-Pigtail

Links (Click on the below items to view):

- [Operations Manual](#)
- [Wiring Diagram \(Online\)](#)
- [HigResPic1](#)
- [HigResPic2](#)
- [HigResPic3](#)
- [HigResPic4](#)
- [HigResPic5](#)
- [HigResPic6](#)
- [HigResPic7](#)
- [HigResPic8](#)
- [HigResPic9](#)
- [HigResPic10](#)
- [ISO 9001 Certification](#)
- [Business Certificate](#)
- [Shipping Time Map](#)