

Explosion Proof 1080p HD Security Camera & Infrared LED Light Combination - Optical & Digital Zoom - 3/4"NPT

EXPCMR-ALG-OZ-IC-1080P-IR-1XLE3-1227

Please see last page for supporting documentation for this product(certificates, CAD files & drawings, IES files, wiring diagrams, etc).



EXPCMR-ALG-OZ-IC-1080P-IR-1XLE3-1227 Explosion Proof Camera & Infrared LED Light

Listing: NRTL Listed for United States and Canada; ATEX/IECEx Rated

Dimensions: 18"W x 8"D x 6"H

Weight: 35 lbs

Wiring: (1) 3/4" NPT Wiring Hub

Camera Specs

Watts: 12W

Voltage: 120-240V AC

Image Sensor: CMOS

Signal System: NTSC

Connectors: Terminal Strips

Effective Pixels: 1956(H) * 1266(V)

Min. Illumination: 0.1 Lux @ F1.2 AGC On / 0 Lux w/ IR

Shutter Speed: 1/25(1/30s) to 1/50,000s

Lens: 5-50mm Focal Length

Angle of View: 90°

Day/Night: ICR

Video Framerate: 1080p @ 30fps

Video Output: Analog over Copper Wire

Signal to Ratio: >62 dB

Language: English

Infrared Light Specs

Watts: -

Voltage: 120-240V AC

Lumens: -

Luminous Efficacy: -

Infrared Wavelength Options: 750 nm, 850 nm or 940 nm

LED Life Expectancy: 50,000 hours

Lighting Configuration: Spot or Flood

IR Spot Beam: 120`L x 60`W

IR Flood Beam: 80`L x 80`W

Ambient Operating Temp Range: -40°C to +60°C

Housing Material: Aluminum

Light Housing Color: Powder Coated - Grey

Lens Material: Polycarbonate

Mounting: Adjustable Surface Mount Brackets w/ Set Screws

Ratings/Approvals

Listed for United States & Canada

Class I, Divisions 1 & 2, Groups B, C, D

Class I, Zones 1 & 2, Groups IIB+H2, IIA

Class II, Divisions 1 & 2, Groups E, F, G

Class III, Divisions 1 & 2

NEMA 3R, 4, 7 (B, C, D), 9 (E, F, G)

NRTL Listed to UL 508A

NRTL Listed to UL 1203

NRTL Listed to CSA C22.2 No 14, 25, 30

Special Orders- Requirements

Contact us for special requirements

Toll Free: 1-800-369-6671

Intl: 1-214-616-6180

Fax: 1-903-498-3364

E-mail: sales@larsonelectronics.com

The EXPCMR-ALG-OZ-IC-1080P-IR-1XLE3-1227 from Larson Electronics is

a Combination Explosion Proof Camera & Explosion Proof Infrared LED Light Fixture that is designed for security and remote observation in both indoor and outdoor hazardous environments at both day and night. This 1080p HD high resolution security camera features a 150` range, 10x optical zoom with autofocus, and 62x digital zoom for maximal coverage and accuracy. A digital inverter supports both HD-TVI and CVBS analog output. This unit also features an explosion proof infrared light that is available in both spot or flood options and various wavelengths.

Camera Features: The EXPCMR-ALG-OZ-IC-1080P-IR-1XLE3-1227 security camera provides operators in hazardous areas with crisp 1080p HD high resolution images. A 5-50mm motorized lens automatically adjusts focus, providing operators with a precise 10x optical zoom and autofocus and 62x digital zoom image. A digital inverter supports both HD-TVI and CVBS analog output to a customer provided remote mount DVR system. This camera measures a compact 12.34" x 3.96" x 4.22" and the mounting base allows for precise aiming with 90° of vertical adjustment.

The monitoring device comes with built-in infrared lights to support image capturing in low-light conditions and after sunset. This component is available in two lighting configurations: spot and flood. Four Edison Edixeon® three watt LEDs producing 180 lumens each are arranged in rows and paired with high purity 10 degree optics to produce a tightly focused spot beam with limited spread or light spillage. The spot configuration features a 10° beam that measures 120` L x 60` W. The flood configuration throws a 35° beam that measures 80` L x 80` W. The explosion proof infrared light is powered using a customer-provided 120-240V AC power source.

In-Use Robotic Sandblasting

The EXPCMR-ALG-OZ-IC-1080P-IR-1XLE3-1227 security camera is built to perform under harsh and rugged conditions. This IP67 rated waterproof unit resists the corrosive effects of weather, dust, dirt, and humidity. This Class I Divisions 1 & 2, Class II Divisions 1 & 2, Class III Divisions 1 & 2 rated camera provides property and product security while also protecting operators with its safe and reliable explosion proof and weatherproof design.

Wiring: This unit is designed to operate on 120-240V AC. Link-up with the camera is achieved via customer provided standard stranded cable such as SOOW. The cable video/power drop cable can be routed either through the mounting surface or through a cable guide on the edge of the mounting base. The EXPCMR-ALG-OZ-IC-1080P-IR-1XLE3-1227 features separate leads for both the camera and the light fixture which allows them to be operated independently of one another if desired. This unit is equipped with a 3/4" NPT wiring hub for customer provided wiring.

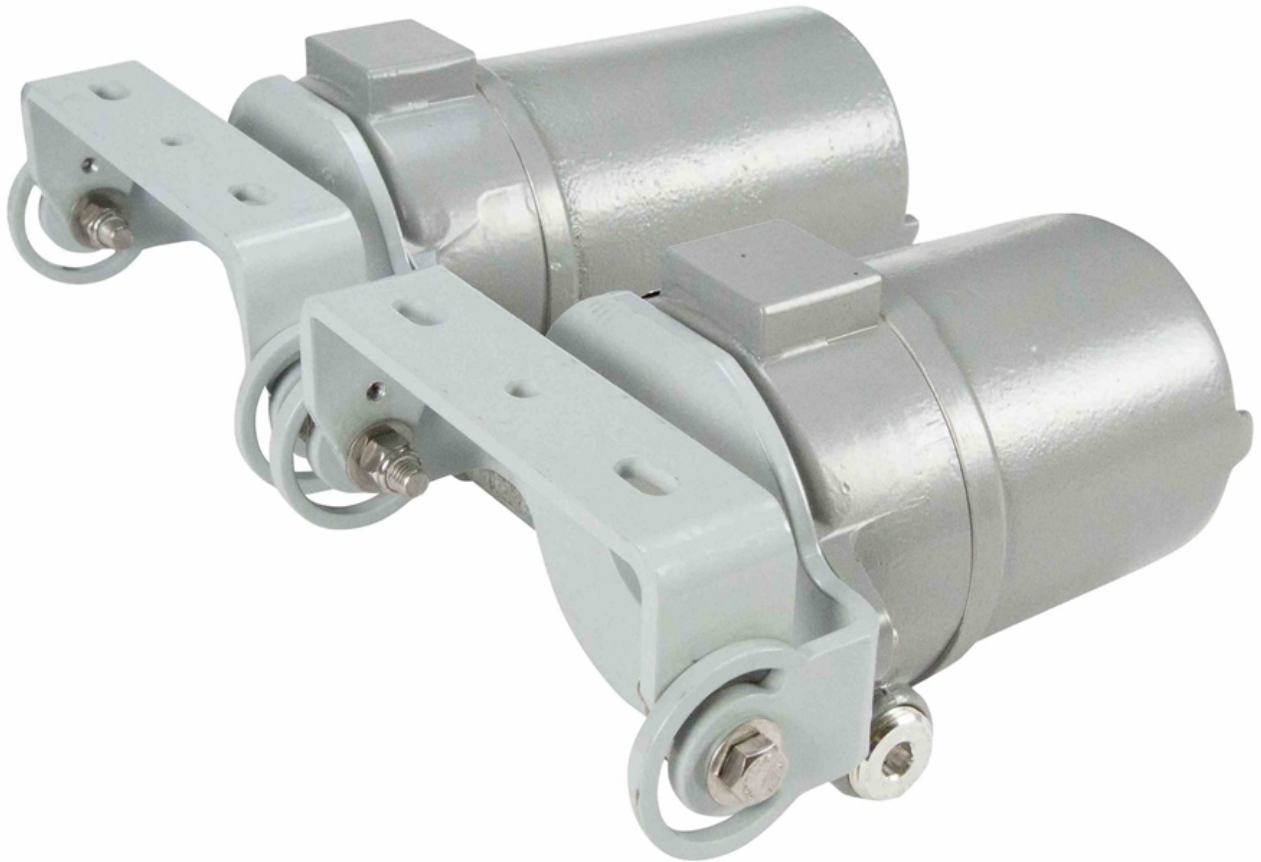
Mounting: The EXPCMR-ALG-OZ-IC-1080P-IR-1XLE3-1227 is secured to flat surfaces, such as a ceiling or wall, using an adjustable reverse pedestal style brackets. The included mounting bracket allows 90° vertical adjustment and 360° of swivel for precision aiming. The camera and the light each have their own bracket for mounting reliability and are connected via piping for increased strength and mounting durability.

Applications: Vessel, tank and reactor monitoring, remote observation of external facilities, offshore and land based rigs, indoor and outdoor security, commercial buildings and more.

At Larson Electronics, we do more than meet your lighting needs. We also provide replacement, retrofit, and upgrade parts as well as industrial grade power accessories. Our craftsmen can custom build any lighting system and/or accessories to fit the unique demands of your operation. A commitment to honesty, quality, and dependability has made Larson Electronics a leader in the lighting and electronics business since 1973. Contact us today at 800-369-6671 or message sales@larsonelectronics.com for more information about our custom options tailored to meet your specific industry needs.



Frequently Asked Questions (FAQ)



Options:

EXPCMR-ALG-OZ-IC-1080P-IR-1XLE3-1227-Beam Config-Wavelength

Example: EXPCMR-ALG-OZ-IC-1080P-IR-1XLE3-1227-SP-750NM

Beam Config	
SPOT	-SP
FLOOD	-FL

Wavelength	
750 NM	-750NM
850 NM	-850NM
940 NM	-940NM

Links (Click on the below items to view):

- [ATEX Certificate \(European Explosion Proof\)](#)
- [Canadian CEC Certificate \(Commonly referred to as CSA Certificate\)](#)
- [CE Certificate](#)
- [Certificate 1, Misc](#)
- [Certificate 2, Misc](#)
- [Certificate 3, Misc](#)
- [Certificate 4, Misc](#)
- [Eye Safety Information/Certificate](#)
- [IEC Ex Certificate \(International Explosion Proof\)](#)
- [MSDS \(Material Safety Data Sheet\)](#)
- [RoHS Certificate \(Restriction of Hazardous Substances\)](#)
- [USA NEC Certificate \(Commonly referred to as UL Certificate\)](#)
- [HigResPic1](#)
- [HigResPic2](#)
- [HigResPic3](#)
- [ISO 9001 Certification](#)
- [Business Certificate](#)