

21 Foot Telescoping Light Mast - 9' to 21' Stationary Four Stage Light Tower - 360° Rotating Boom

LM-21-9.1-4S-EW

Please see last page for supporting documentation for this product(certificates, CAD files & drawings, IES files, wiring diagrams, etc).



LM-21-9.1-4S-EW Four Stage Telescoping Light Tower

Length: 9.17' - 21.125'

Weight: +-1,200 lbs

Capacity: 1500 lbs

Materials: Steel

Finish: Powder Coated

Operation: 1,500lbs Electric Winch

Winch Voltage: 120V or 240V AC 50/60 Hz

Cable: 1/4" Aircraft Cable

Mounting: 1/2" thick, 28"x28" Six Bolt Hole Bracket

Ancho Bolts: (6) 1" Anchor Bolts (not included)

Shipping: Common Freight

Shipping Dimensions: 16.5'-L x 4'-W x 5'-H

Shipping Weight: +-2000 lbs

Options: Length- Mounting-Fixtures/ Call Us for Special Requirements

The customer ships the failed light mast to Larson Electronics at their expense. If the failure is a manufacturer defect, we will repair and/or replace the unit.

Quick Summary

9.1' to 21' Light Mast

Steel Construction

Power Coated Finish

125 mph Wind Resistance

Manual or Optional Electric Operation

UL 508A

Special Orders- Requirements

Contact us for special requirements

Toll Free: 1-800-369-6671

Intl: 1-214-616-6180

Fax: 1-903-498-3364

E-mail: sales@larsonelectronics.com

This unit is Made In USA - Manufactured in Texas

The Larson Electronics LM-21-9.1-4S-EW fixed mount 4-stage light mast provides a safe and effective way for operators to quickly deploy lights, security cameras and other equipment to elevations up to twenty-one feet. This stationary light tower features a rotating boom that allows for 360° of rotation and a removable mast head for storing mounted equipment when not in use.

PLEASE NOTE: ANY FREE SHIPPING OFFERS DO NOT APPLY TO LIGHT MASTS OR LIGHT TOWERS

This telescoping three stage steel light mast from Larson Electronics' is designed to allow operators to quickly and safely deploy lighting, cameras, and other electrical equipment in locations where this equipment must be elevated to heights up to 21' for effective coverage. This light boom can be extended to 21' for maximum area coverage and collapsed to 9.1' for applications where a footprint smaller is required. The tower is constructed of square steel tubing with a lower section 6.18' in length and 10" by 10" by 3/8" thick, second section 6.27' in length and 8" by 8" by 3/8" thick, third section 6.45' in length and 6" by 6" by 3/8" thick, and an upper section 8.45' in length and 4" by 4" by 1/2" thick. Each section has 2' of overlap. The mast is extended to its full height via using an

included 1,500 lbs rated electric winch with 1/4" cable.

[Click Image to Enlarge](#)

[Click Image to Enlarge](#)

[Click Image to Enlarge](#)

The LM series of towers are powder coated with glossy blue finish for corrosion resistances and aesthetics. These light masts are typically mounted to trailers or other stable surfaces via a 28" by 28", 1/2" thick mounting base-plate which has been drilled to accept six 1-1/4" anchor bolts. Two 3" by 6" by 1/4" thick skid pockets at the base of the mast aid in transportation and installation of the mast. When fully collapsed, the top stage has 24" extending from the second stage, allowing operators to mount larger equipment without having to dismount when collapsed.

The LM family of telescoping towers feature a proprietary mast guidance system, which provide increased stability during high winds. When lowered to 9', the mast can withstand winds up to 125 mph. When elevated to its full upright position, the mast can be rotated a full 360°. By loosening the T-Handle, operators can rotate the mast with easy in either direction. The mast can be positioned in any direction and locked back in place by re-tightening the T-handle. The mast itself spins freely with easy, and can typically be rotated with a single hand.

The electric winch on this mast is offered in 120V or 240V AC 50/60 HZ. Additional voltage options are available at an additional charge. Larson Electronics can offer single phase and three phase AC winches, or low voltage DC winches.

This light tower weighs approximately 1,200 lbs, can easily support and lift 1,500 lbs. The entire tower assembly is shipped via common freight carrier and when shipped measures approximately 16.5 feet long, 4 feet wide, 5 feet tall and weighs approximately 2000 lbs. Larson Electronics can custom tailor these units to the customer's requirements with longer sections and larger mounting plates. For example, the LM-30-3S is another model that reaches to a length of 30 feet, with a 14 foot lower section, 12 foot middle section, and a 8 foot upper section and a 4 foot wide upper mounting bracket. We also offer a choice of either the manual 1,000 lbs hand winches included standard or optional electric winches.

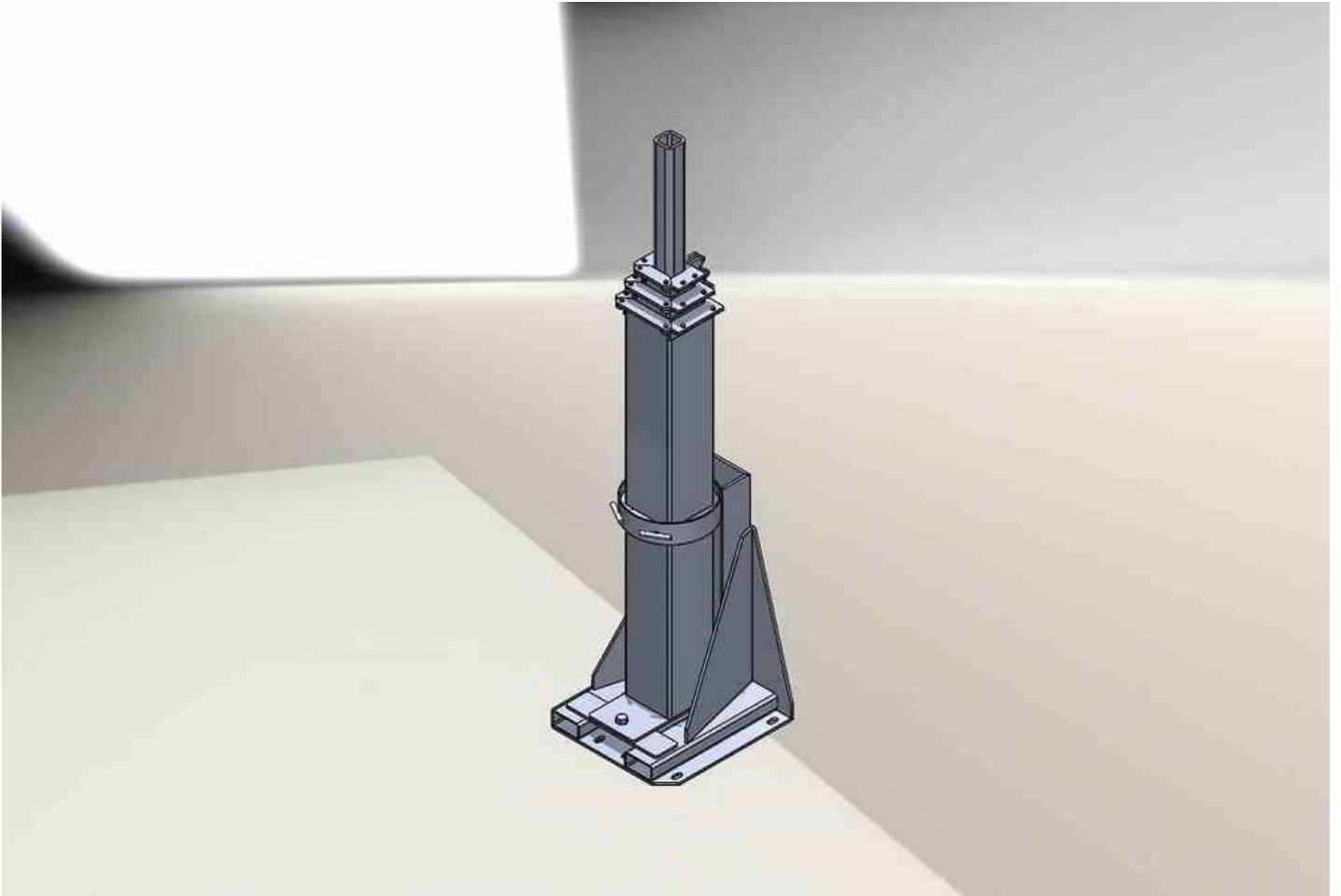
Suggested Applications: Temporary lighting, construction sites, and security camera deployment. We can equip this mast with 1000W or 1500W Metal Halide lights or a wide variety of high powered LED lights with comparable power, including the [LED10WSA-160](#), [LEDLB-200X2E](#), [LEDLB-160X2E](#) or [LEDLB-80x2E](#).

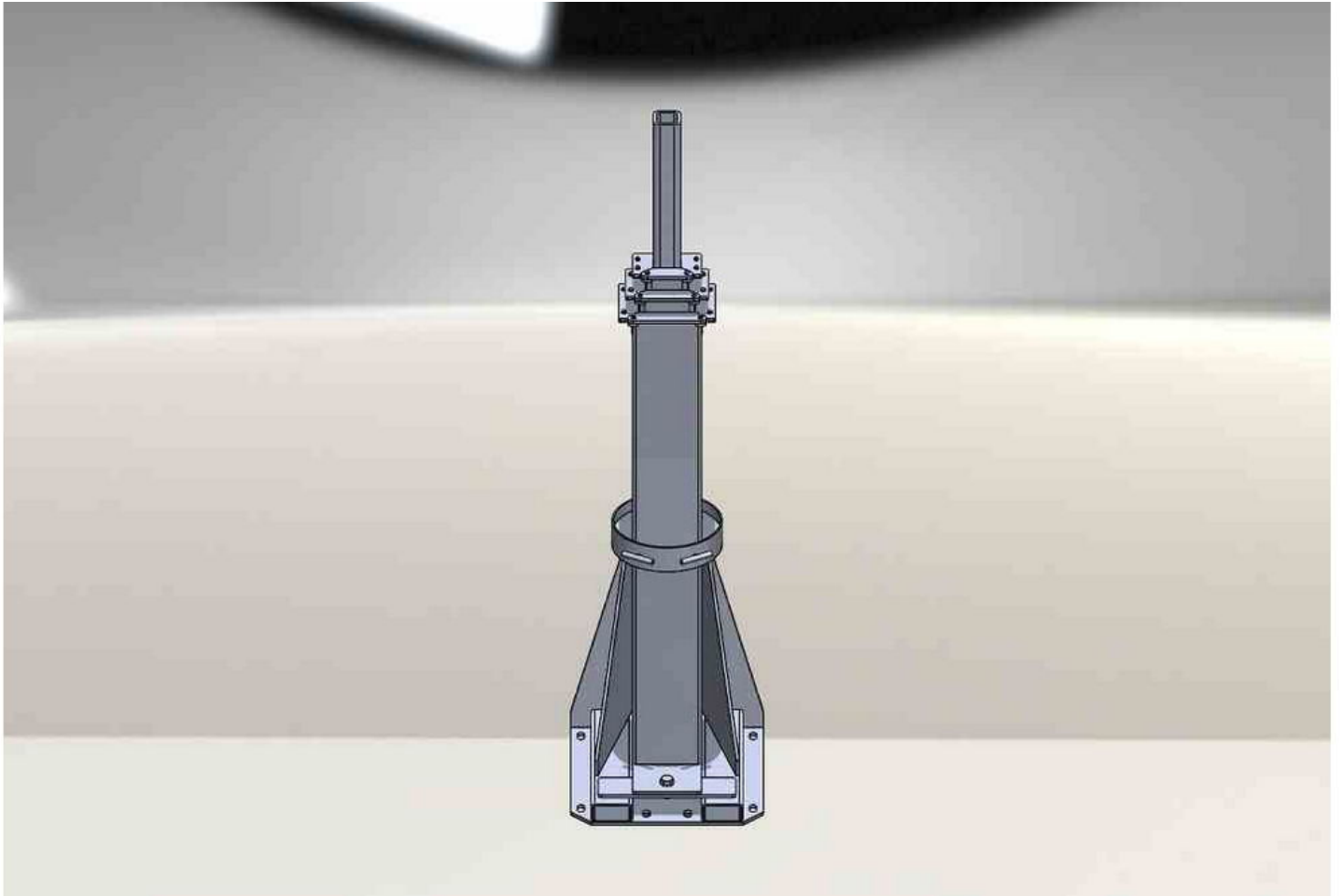


Frequently Asked Questions (FAQ)









Options:

LM-21-9.1-4S-EW-Winch Voltage

Example: LM-21-9.1-4S-EW-120V

Winch Voltage	
120V	-120V
240V	-240V

Links (Click on the below items to view):

- [Dimensional Drawing 2D](#)
- [Operations Manual](#)
- [STEP File \(3D CAD Model\)](#)
- [HigResPic1](#)
- [HigResPic2](#)
- [HigResPic3](#)
- [HigResPic4](#)
- [HigResPic5](#)
- [HigResPic6](#)
- [HigResPic7](#)
- [HigResPic8](#)
- [HigResPic9](#)
- [HigResPic10](#)
- [ISO 9001 Certification](#)
- [Business Certificate](#)