

Rigid Conduit Nipple Aluminum Instruction Manual

Thank you for your purchase of the Larson Electronics NCLOSE Series

WARNING:

READ CAREFULLY BEFORE INSTALLING FIXTURE. RETAIN THESE INSTRUCTIONS FOR FUTURE REFERENCE. CRITICAL SAFETY INSTRUCTIONS:

- INSTALLATION SHOULD ONLY BE CONDUCTED BY A QUALIFIED ELECTRICIAN IN ACCORDANCE WITH NEC AND ANY RELEVANT LOCAL BUILDING CODES.
- RISK OF FIRE OR ELECTRIC SHOCK. FIXTURE INSTALLATION REQUIRES KNOWLEDGE OF FIXTURE'S ELECTRICAL SYSTEMS. IF NOT QUALIFIED, CONTACT A QUALIFIED ELECTRICIAN.
- BE CERTAIN ELECTRICAL POWER IS OFF BEFORE AND DURING INSTALLATION AND MAINTENANCE.
- MAKE SURE THE SUPPLY VOLTAGE IS THE SAME AS THE FIXTURE'S RATED VOLTAGE.
- TO PREVENT WIRING DAMAGE OR ABRASION, DO NOT EXPOSE WIRING TO EDGES OF SHEET METAL OR SHARP OBJECTS. SUITABLE FOR DAMP LOCATIONS.

The NCLOSE Series Aluminum Rigid Conduit Nipple is a hazardous location certified, copper-free aluminum 3/4" conduit nipple, that is designed to connect threaded rigid or IMC conduits to cast hubs, or to drilled and tapped conduit openings. This conduit nipple is suitable for use in hazardous locations and applications.

DIRECTIONS FOR INSTALLATION

CAUTION: Before installing, make sure you are compliant with area classifications, failure to do so may result in bodily injury, death and property damage. Do not attempt installation until you are familiar with the following procedures. All installation must comply with the applicable Electrical Code.

Make sure that the circuit is De-energized before starting installation or maintenance.

Verify that the installation is grounded. Failure to ground will create electrical shock hazards, which can cause serious injury and or death.

Important: Please read these instructions carefully before installing or maintaining this equipment. Good electrical practices should be followed at all times and this data should be used as a guide only.

WARNING: Do not attempt to install NPT threaded nipples into metric threaded openings. .

Step 1

Ensure NPT thread type and size are compatible with enclosure thread.

Where ingress protection of IP66 is required, the use of a suitable non-setting thread sealant is recommended.

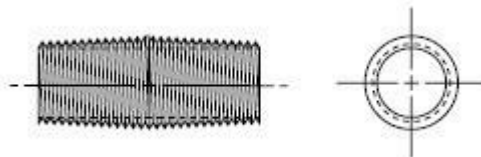
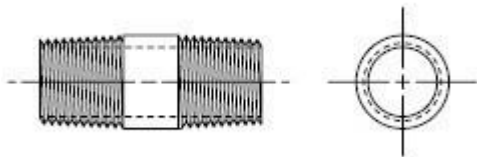
Step 2

Tighten nipple into the enclosure/equipment with a wrench located on the center of the nipple. The nipple should be hand tight plus one wrench turn per ANSI/ASME B1.20.1-1983.

The number of NPT threads engaged must be a minimum of 5.

Notes:

1. If the enclosure is already in operation, it must be DISCONNECTED from the supplying circuit before beginning installation.
2. Nipples shall not be used for the direct inter-connection of enclosures.
3. Only one nipple is to be used with any single cable entry on the associated equipment.



CERTIFICATION DETAILS:

UL Standards 886 and I203

Class I, Div. I & 2 Groups A,B,C,D

Ambient Temperature: -50°C
to +60°C

Class II, Div. I & 2, Groups EFG

Class III

MAINTENANCE

There are no serviceable parts inside the fixture. However, it is good practice to routinely clean and check the fixture for proper function.

USE AND CARE

Unauthorized modification may impair the function and/or safety of this device and could affect the life of the equipment. Always check for damaged or worn out parts before using the device. Store it in a secure place out of the reach of children when not in use. Inspect for good working condition prior to storage and before re-use.

REPLACEMENT PARTS

The NCLOSE Series is designed to provide years of reliable performance. Should the need for replacement parts arise, please contact Larson Electronics.

THESE INSTRUCTIONS MAY NOT COVER ALL DETAILS OR VARIATIONS OF THIS PRODUCT FOR YOUR EQUIPMENT OR INSTALLATION REQUIREMENTS. SHOULD FURTHER INFORMATION NOT COVERED BY THESE INSTRUCTIONS BE REQUIRED, PLEASE CONTACT LARSON ELECTRONICS BY EMAIL AT SALES@LARSONELECTRONICS.COM OR BY PHONE AT 1-800-369-6671 FOR FURTHER ASSISTANCE.

PLEASE VISIT LARSONELECTRONICS.COM FOR **WARRANTY** AND **RETURN** INFORMATION.