

42 Watt Power Supply for Emergency Ballast for EMG LED Light Fixtures

XXL-EMG-DCP-42W

Please see last page for supporting documentation for this product(certificates, CAD files & drawings, IES files, wiring diagrams, etc).



42 Watt Power Supply for Emergency Ballast for EMG LED Light Fixtures

Output Current - 1400 mA

Input Voltage Range - 90-305V AC

Output Voltage Range - 13-25V DC

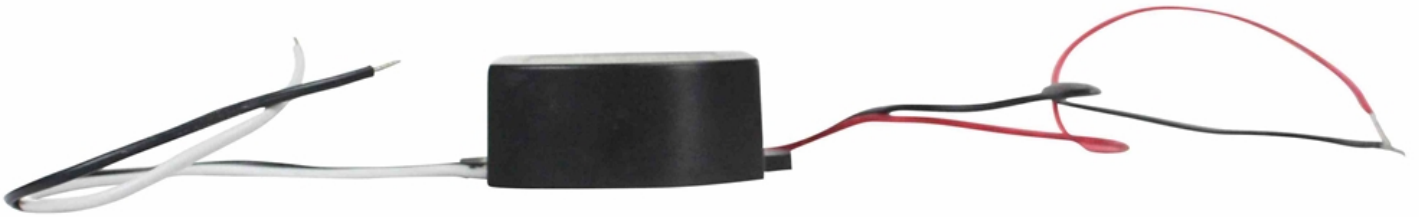
Maximum Output - 42 Watts

Typical Efficiency - 84%

Power Factor - 0.96 @ 120V AC, 0.95 @ 220V AC



Frequently Asked Questions (FAQ)





Options:

XXL-EMG-DCP-42W-Capabilities

Example: XXL-EMG-DCP-42W-.

Capabilities	
NON-DIMMABLE	-.
DIMMABLE	-DIMM

Links (Click on the below items to view):

- [HigResPic1](#)
- [HigResPic2](#)
- [HigResPic3](#)
- [ISO 9001 Certification](#)
- [Business Certificate](#)