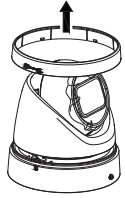


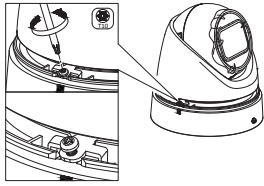
IR Varifocal Turret Network Camera

Quick Installation Guide

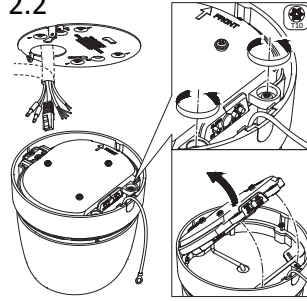
1.1



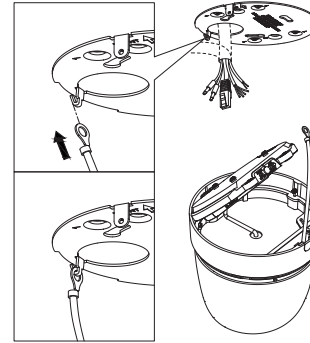
1.2



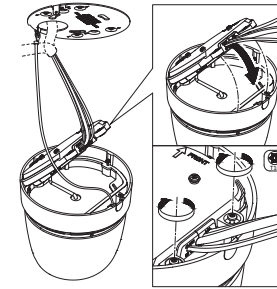
2.2



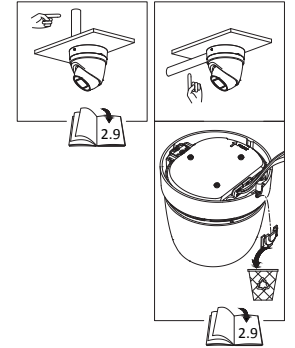
2.3



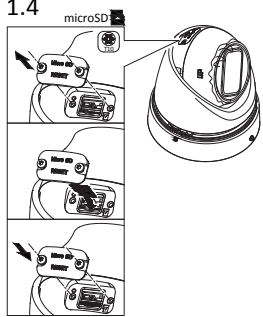
2.7



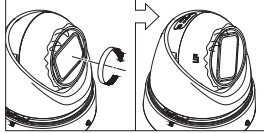
2.8



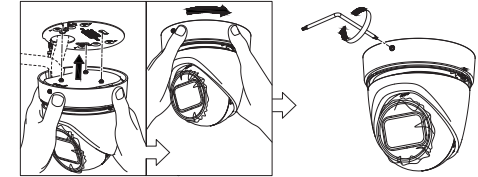
1.4



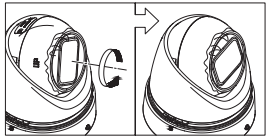
1.3



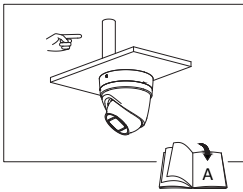
2.9



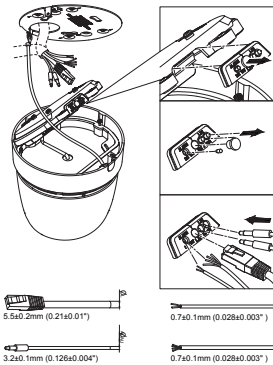
1.5



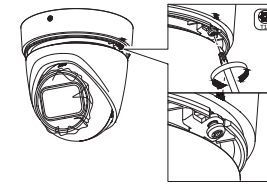
2.1



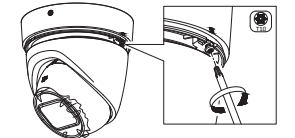
2.4



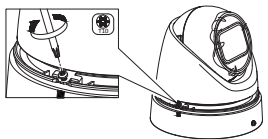
3.1



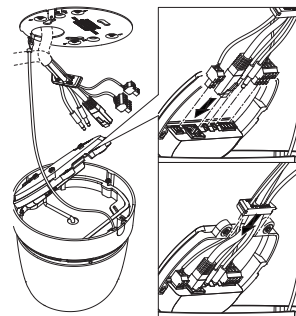
3.2



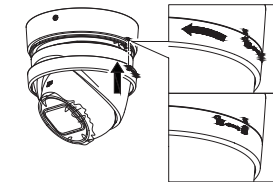
1.6



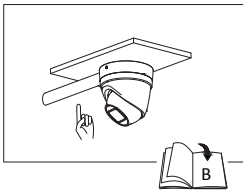
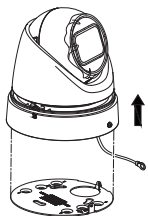
2.6



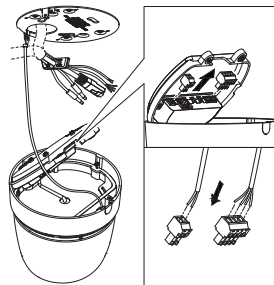
4.1



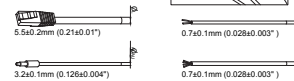
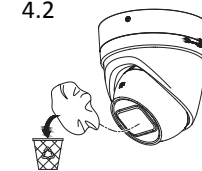
1.7



2.5



4.2



Press Reset button for about 10s when the camera is powering on or rebooting to restore the default settings, including the user name, password, IP address, port No., etc.