

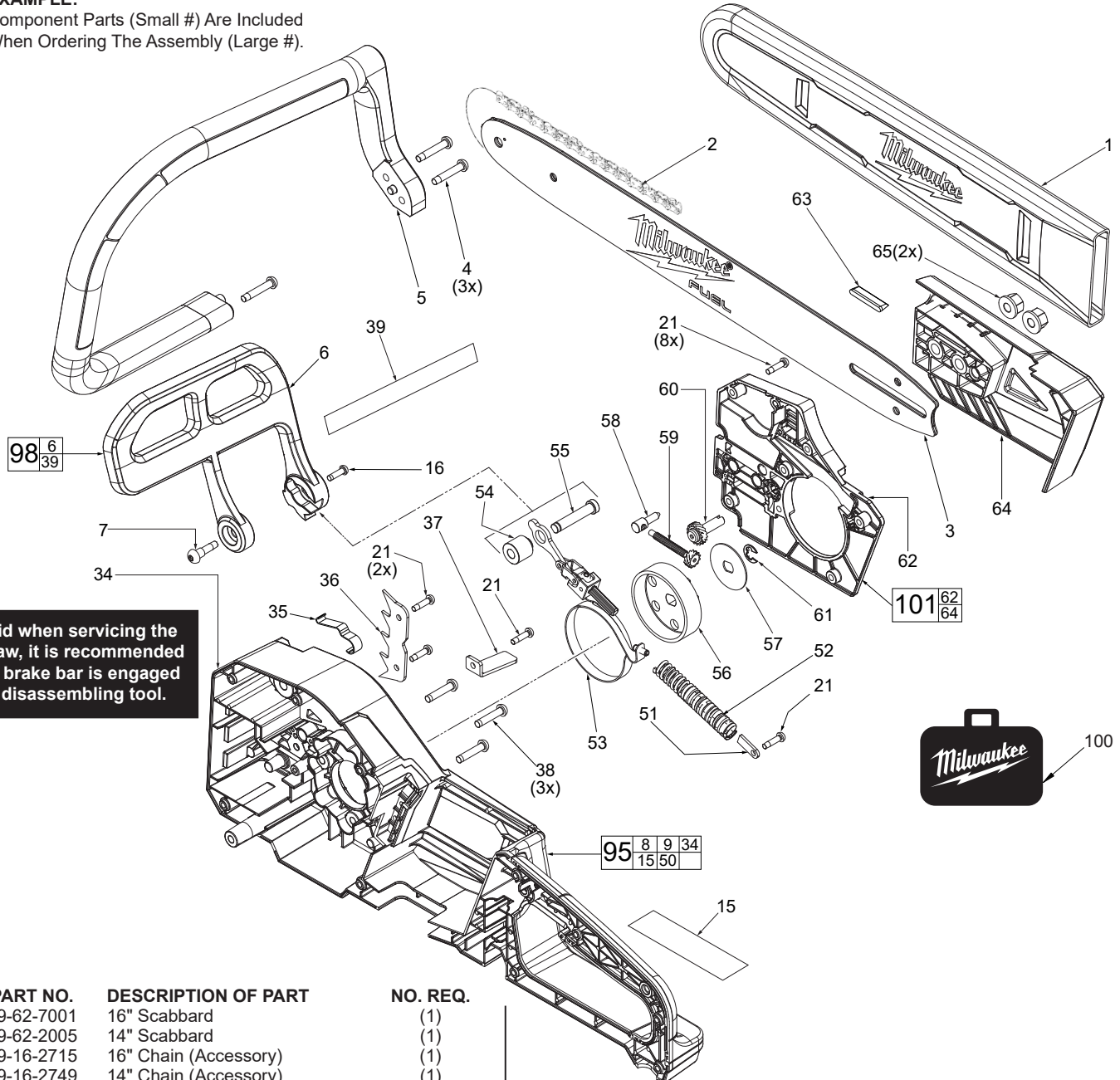


# SERVICE PARTS LIST

**BULLETIN NO.**  
**54-40-2770**

|  |                |   |             |
|--|----------------|---|-------------|
| SPECIFY CATALOG NO. AND SERIAL NO. WHEN ORDERING PARTS |                | REVISED BULLETIN                        | DATE        |
| <b>M18™ FUEL™ CHAIN SAW</b>                            |                |   | Aug. 2022   |
| CATALOG NO.  | <b>2727-20</b> | STARTING SERIAL NO.                     | <b>J36A</b> |
|  |                | WIRING INSTRUCTION<br><b>SEE PAGE 4</b> |             |

**EXAMPLE:**  
Component Parts (Small #) Are Included  
When Ordering The Assembly (Large #).

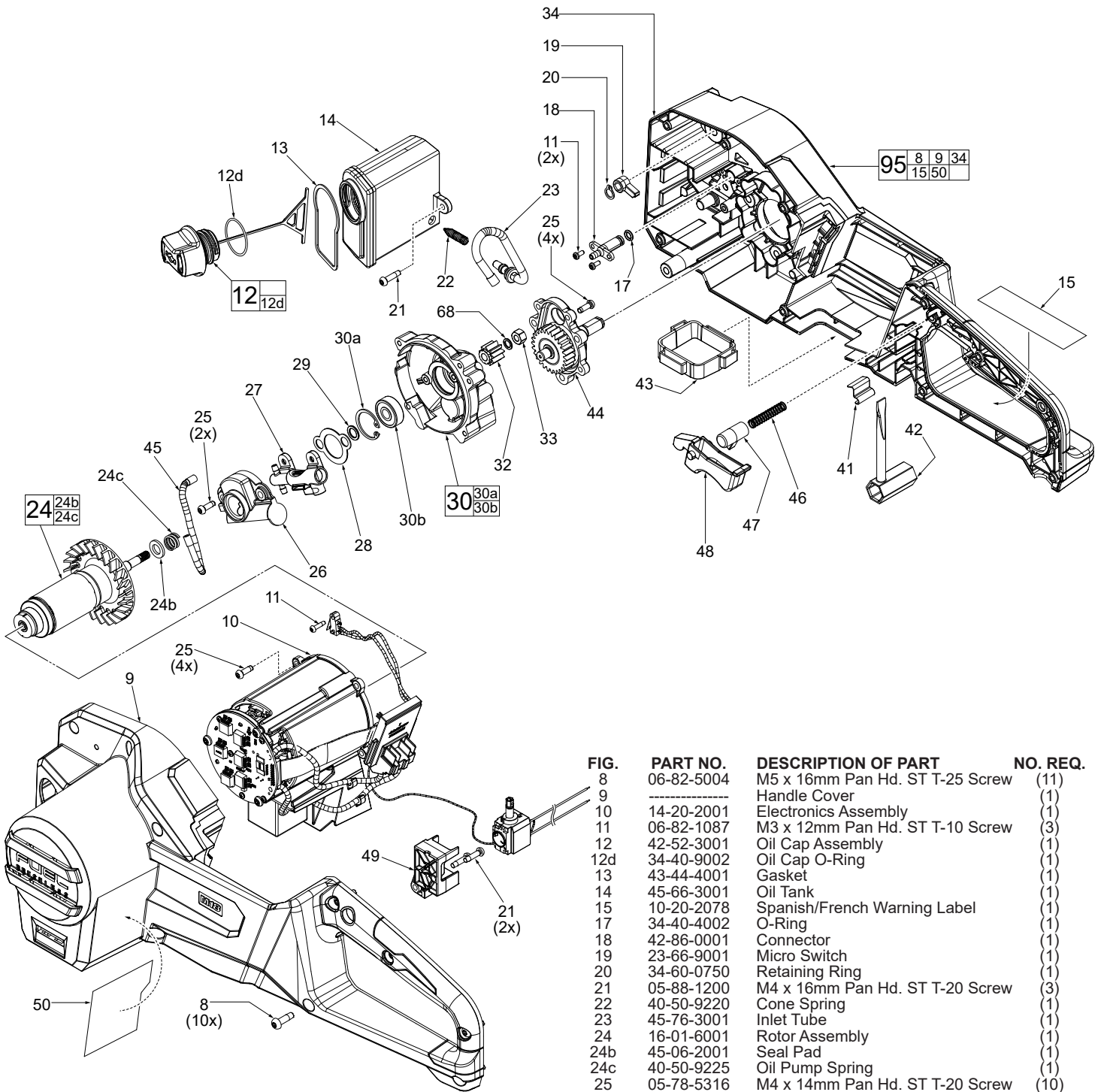


As an aid when servicing the chain saw, it is recommended that the brake bar is engaged prior to disassembling tool.

| FIG. | PART NO.   | DESCRIPTION OF PART                | NO. REQ. |
|------|------------|------------------------------------|----------|
| 1    | 49-62-7001 | 16" Scabbard                       | (1)      |
|      | 49-62-2005 | 14" Scabbard                       | (1)      |
| 2    | 49-16-2715 | 16" Chain (Accessory)              | (1)      |
|      | 49-16-2749 | 14" Chain (Accessory)              | (1)      |
| 3    | 48-09-3001 | 16" Bar                            | (1)      |
|      | 49-16-2756 | 14" Bar (Accessory)                | (1)      |
| 4    | 06-82-2366 | M5 x 28mm Pan Hd. T-25 ST Screw    | (3)      |
| 5    | 43-62-9001 | Bail Handle                        | (1)      |
| 6    | -----      | Brake Bar                          | (1)      |
| 7    | 06-82-4010 | M5 x 21mm Pan Hd. ST T-25 Screw    | (1)      |
| 15   | 10-20-2078 | Spanish/French Warning Label       | (1)      |
| 16   | 05-88-1210 | M4 x 14mm Pan Hd. T-20 Mach. Screw | (1)      |
| 21   | 05-88-1200 | M4 x 16mm Pan Hd. ST T-20 Screw    | (14)     |
| 34   | -----      | Handle Support                     | (1)      |
| 35   | 42-36-1001 | Hand Brake Tension Spring          | (1)      |
| 36   | 43-72-3001 | Spur Bracket                       | (1)      |
| 37   | 42-36-9001 | Chain Catcher                      | (1)      |
| 38   | 06-82-3001 | M5 x 24mm Pan Hd. T-25 Mach. Screw | (3)      |
| 39   | 10-20-2077 | Icon Warning Label                 | (1)      |
| 51   | 44-66-7001 | Brake Spring Support Plate         | (1)      |
| 52   | 40-50-7111 | Brake Spring                       | (1)      |
| 53   | 14-04-0110 | Brake Assembly                     | (1)      |
| 54   | 42-40-3001 | Bushing                            | (1)      |

| FIG. | PART NO.   | DESCRIPTION OF PART              | NO. REQ. |
|------|------------|----------------------------------|----------|
| 55   | 44-94-7001 | Brake Shaft                      | (1)      |
| 56   | 45-44-4002 | Sprocket                         | (1)      |
| 57   | 45-88-7001 | Chain Washer                     | (1)      |
| 58   | 05-89-2001 | Chain Tensioning Post            | (1)      |
| 59   | 05-89-8001 | Chain Tensioner Main Screw       | (1)      |
| 60   | 05-81-9001 | Chain Tensioner Adjustment Screw | (1)      |
| 61   | 42-70-5268 | Retaining E-Ring                 | (1)      |
| 62   | -----      | Chain Brake Cover                | (1)      |
| 63   | 43-84-1001 | Insert Block                     | (1)      |
| 64   | -----      | Bar Holder                       | (1)      |
| 65   | 05-55-5001 | 13mm M8 Flange Nut               | (2)      |
| 95   | 14-34-0220 | Handle Kit                       | (1)      |
| 98   | 42-18-7001 | Brake Bar Assembly               | (1)      |
| 100  | 49-16-2747 | BMC                              | (1)      |
| 101  | 31-15-0224 | Cover Assembly Service Kit       | (1)      |

**MILWAUKEE TOOL • www.milwaukeetool.com**  
13135 W. Lisbon Road, Brookfield, WI 53005  
Drwg. 6



**FIG. NOTES**

- 24 Great care must be used when removing or installing rotor assembly. Magnet on rear end of rotor is very fragile.
- 33 Torque hex nut to 100kg.cm±3 (87in.lbs±2).
- 95 Prior to taking tool apart, use a sharp razor blade to score the center line of nameplate (33) and symbol labels (36 and 37). This will allow housing halves (15 and 29) to separate when housing screws are removed.
- 15,39, 50 A clean, dry surface is essential for proper performance for any adhesive system. The area intended for application of any adhesive label or nameplate must be prepared by cleaning with isopropyl alcohol. The solvent is to be applied with a clean, lint free applicator and the surface allowed to dry before applying any label or nameplate.

| FIG. | PART NO.   | DESCRIPTION OF PART                 | NO. REQ. |
|------|------------|-------------------------------------|----------|
| 8    | 06-82-5004 | M5 x 16mm Pan Hd. ST T-25 Screw     | (11)     |
| 9    |            | Handle Cover                        | (1)      |
| 10   | 14-20-2001 | Electronics Assembly                | (1)      |
| 11   | 06-82-1087 | M3 x 12mm Pan Hd. ST T-10 Screw     | (3)      |
| 12   | 42-52-3001 | Oil Cap Assembly                    | (1)      |
| 12d  | 34-40-9002 | Oil Cap O-Ring                      | (1)      |
| 13   | 43-44-4001 | Gasket                              | (1)      |
| 14   | 45-66-3001 | Oil Tank                            | (1)      |
| 15   | 10-20-2078 | Spanish/French Warning Label        | (1)      |
| 17   | 34-40-4002 | O-Ring                              | (1)      |
| 18   | 42-86-0001 | Connector                           | (1)      |
| 19   | 23-66-9001 | Micro Switch                        | (1)      |
| 20   | 34-60-0750 | Retaining Ring                      | (1)      |
| 21   | 05-88-1200 | M4 x 16mm Pan Hd. ST T-20 Screw     | (3)      |
| 22   | 40-50-9220 | Cone Spring                         | (1)      |
| 23   | 45-76-3001 | Inlet Tube                          | (1)      |
| 24   | 16-01-6001 | Rotor Assembly                      | (1)      |
| 24b  | 45-06-2001 | Seal Pad                            | (1)      |
| 24c  | 40-50-9225 | Oil Pump Spring                     | (1)      |
| 25   | 05-78-5316 | M4 x 14mm Pan Hd. ST T-20 Screw     | (10)     |
| 26   | 42-92-8001 | Dust Cover                          | (1)      |
| 27   | 42-54-7002 | Oil Pump Assembly                   | (1)      |
| 28   | 45-06-1001 | Seal Ring                           | (1)      |
| 29   | 45-88-0406 | Washer                              | (1)      |
| 30   | 14-30-3001 | Gear Case Assy. with Needle Bearing | (1)      |
| 30a  | 34-40-0029 | Retaining Ring                      | (1)      |
| 30b  | 02-04-0001 | Ball Bearing                        | (1)      |
| 32   | 32-60-3002 | Spur Pinion                         | (1)      |
| 33   | 05-55-1001 | M6 Hex Nut                          | (1)      |
| 34   |            | Handle Support                      | (1)      |
| 41   | 44-66-9001 | Wrench Catcher                      | (1)      |
| 42   | 45-96-1001 | Wrench                              | (1)      |
| 43   | 42-92-3001 | Wire Cover                          | (1)      |
| 44   | 14-73-7001 | Spindle/Gear Assembly               | (1)      |
| 45   | 45-76-2001 | Outlet Tube                         | (1)      |
| 46   | 40-50-6010 | Switch Spring                       | (1)      |
| 47   | 42-42-4001 | Lock Off Button                     | (1)      |
| 48   | 45-72-3001 | Trigger                             | (1)      |
| 49   | 45-60-9001 | Switch Support                      | (1)      |
| 50   | 12-20-2727 | Service Nameplate                   | (1)      |
| 68   | 45-88-0378 | Washer                              | (1)      |
| 95   | 14-34-0220 | Handle Kit                          | (1)      |

**LUBRICATION:**

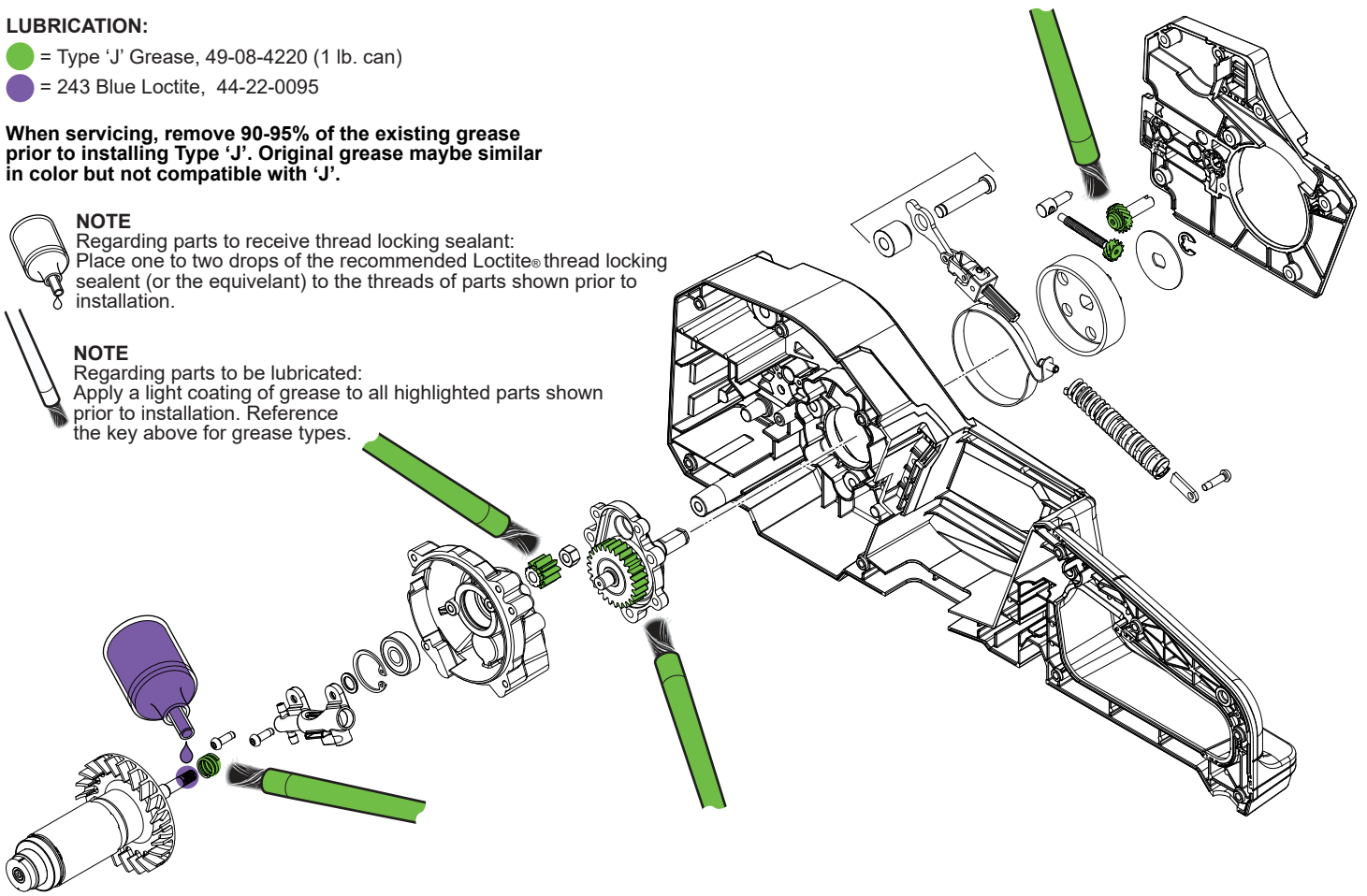
● = Type 'J' Grease, 49-08-4220 (1 lb. can)

● = 243 Blue Loctite, 44-22-0095

**When servicing, remove 90-95% of the existing grease prior to installing Type 'J'. Original grease maybe similar in color but not compatible with 'J'.**

**NOTE**  
Regarding parts to receive thread locking sealant:  
Place one to two drops of the recommended Loctite® thread locking sealant (or the equivalent) to the threads of parts shown prior to installation.

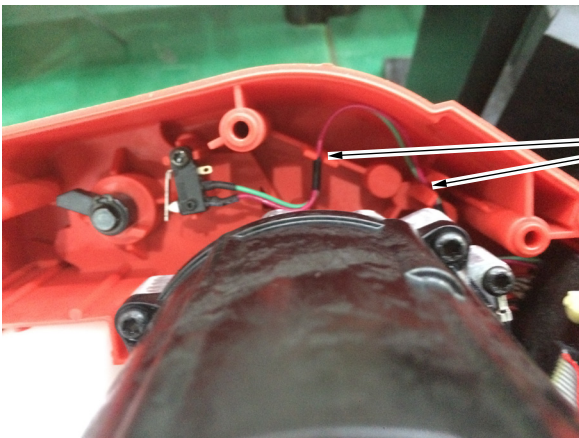
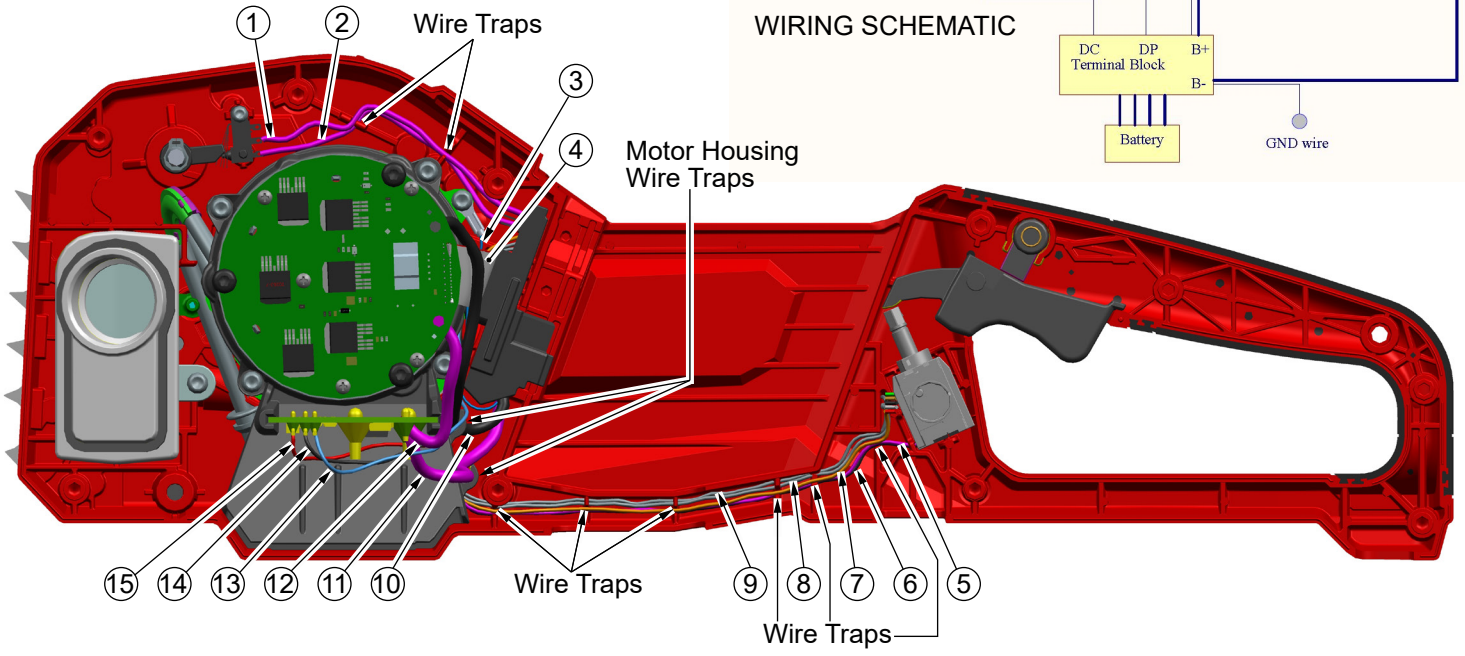
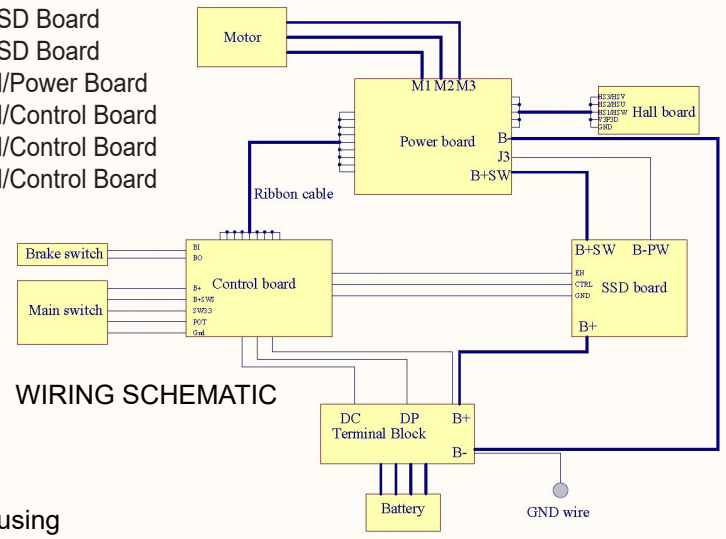
**NOTE**  
Regarding parts to be lubricated:  
Apply a light coating of grease to all highlighted parts shown prior to installation. Reference the key above for grease types.



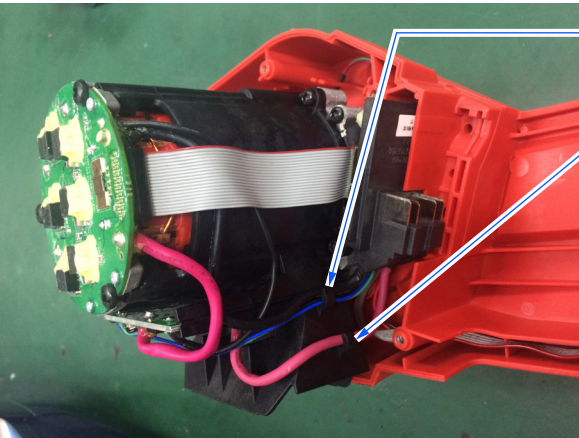
**SCREW TORQUE SPECIFICATIONS**

| FIG. | PART NO.   | WHERE USED             | SEAT TORQUE |          |
|------|------------|------------------------|-------------|----------|
|      |            |                        | (KG/CM)     | (IN/LBS) |
| 4    | 06-82-2366 | Bail Handle            | 24±3        | 20±3     |
| 7    | 06-82-4010 | Brake Bar (left side)  | 15±2        | 13±2     |
| 8    | 06-82-5004 | Handle Cover           | 26±3        | 22±3     |
| 11   | 06-82-1087 | Connector              | 5.5±0.5     | 4±0.5    |
| 11   | 06-82-1087 | Micro Switch           | 5.5±0.5     | 4±0.5    |
| 16   | 05-88-1210 | Brake Bar (right side) | 10±1        | 8±1      |
| 21   | 05-88-1200 | Spur Bracket           | 15±2        | 13±2     |
| 21   | 05-88-1200 | Switch Support         | 15±2        | 13±2     |
| 21   | 05-88-1200 | Oil Tank               | 15±2        | 13±2     |
| 25   | 05-78-5316 | Electronics Assembly   | 15±2        | 13±2     |
| 25   | 05-78-5316 | Dust Cover             | 15±2        | 13±2     |
| 25   | 05-78-5316 | Spindle/Gear Assembly  | 15±2        | 13±2     |
| 33   | 05-55-1001 | Rotor Assembly         | 100±3       | 86±3     |
| 38   | 06-82-3001 | Handle Support         | 33±3        | 28±3     |
| 65   | 05-55-5001 | Bar Holder             | 26±3        | 22±3     |

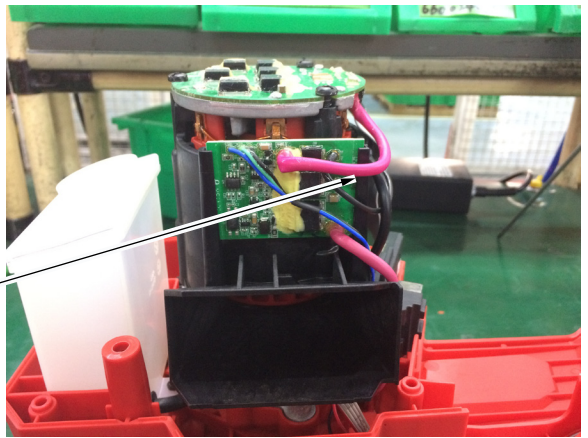
- |   |       |                            |    |       |                         |
|---|-------|----------------------------|----|-------|-------------------------|
| 1 | Red   | Micro Switch/Control Board | 10 | Black | Terminal/SSD Board      |
| 2 | Green | Micro Switch/Control Board | 11 | Red   | Terminal/SSD Board      |
| 3 | Black | Gearcase/Control Board     | 12 | Red   | SSD Board/Power Board   |
| 4 | White | Ribbon Cable               | 13 | Blue  | SSD Board/Control Board |
|   |       | Control Board/Power Board  | 14 | Green | SSD Board/Control Board |
| 5 | Red   | Switch/Control Board       | 15 | Black | SSD Board/Control Board |
| 6 | Black | Switch/Control Board       |    |       |                         |
| 7 | White | Switch/Control Board       |    |       |                         |
| 8 | White | Switch/Control Board       |    |       |                         |
| 9 | White | Switch/Control Board       |    |       |                         |



Place wires #1 and #2 completely in bottom of wire traps.

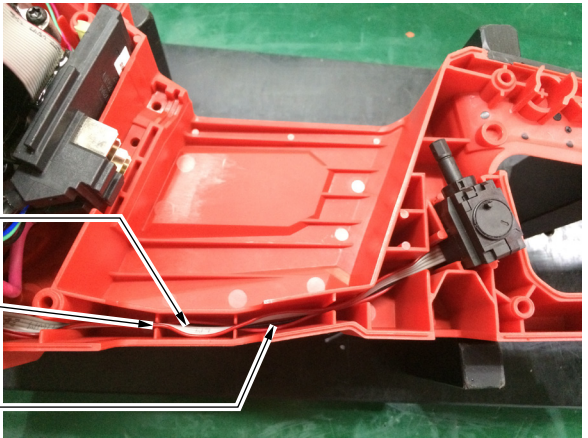


Place wires #10, #13, #14 and #15 in motor housing wire trap.



Route red wire #6 in wire trap of motor housing.

Place #11 red wire in motor housing wire trap.



Place ribbon cable in top of traps.

Place red wire #11 in the middle of traps.

Place black wire #12 in bottom of wire traps.