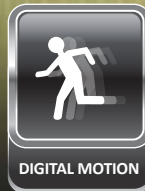
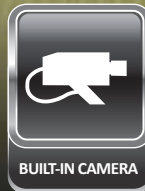


LED

PUBLIC VIEW



10PVMV

OVERVIEW

The ORION Images 10inch value PVM (Public View Monitor) with built in WDR camera and digital motion sensor becomes a highly effective theft deterrent tool creating awareness that a security surveillance system is in place. The optional built in media card reader turns your loss prevention display into an advertising and marketing tool using pre loaded marketing material that can loop continuously.

FEATURES

- » Metal Chassis
- » Built-In WDR 1/3" 520K Color CCD Camera
- » Fixed Lens
- » 700 TV Line Horizontal Camera Resolution (960H)
- » 0.1 Lux
- » 1024 x 768 Resolution, 390 Nits, 900:1 Contrast
- » Optional SD Card Recorder
- » Digital Motion Detection
- » BNC Video 1 In / 1 Out, Audio 1 In, HDMI 1 In, VGA 1 In, Camera 1 Out, PC Stereo 1 In
- » Auto Source Sequencing

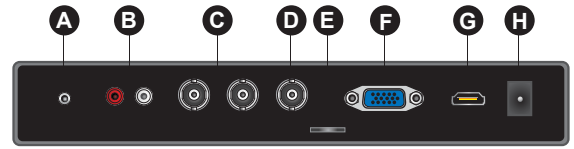


SPECIFICATIONS

10PVMV	
Display	
Screen Size	9.7 Inch
Max. Resolution	1024 x 768 @ 60Hz
Pixel Pitch	0.192 x 0.192mm
Brightness	390cd/m ²
Contrast Ratio	900 : 1
Aspect Ratio	4 : 3
Viewing Angle (H/V)	178° / 178°
Display Color	16.7 Million
Response Time	< 30ms
Video System	NTSC / PAL
Interface	
Video In / Out (BNC Type)	1 In / 2 Out (Include Camera Out)
HDMI In	1 In
VGA In (15Pin D-Sub)	1 In
Audio In (RCA Type)	1 Left & Right
PC Stereo In	1 In
Transmitter	
Remote Control	Yes
Audio	
Built-in Speakers	Yes (1W x 2)
Features	
Filter Type	2D Comb Filter
Auto Source Sequencing	Yes
Motion Detection	Digital Motion
SD Card Recorder	Option
Multi Language	English, Spanish, French, German, Italian
Camera	
Camera Type	WDR Camera
Image Sensor	1/3" 520K Color CCD
Scanning System	2 : 1 interface
Mechanical Design	Pinhole Fixed Camera
S/N Ratio	>52 dB
Resolution	Horizontal : 700 TV Lines
Lens Mount	3.7mm Cone Pinhole Lens(F=2.4)
Sensitivity	0.1 Lux
Electronic Shutter	1/60 ~ 1/12,000 Sec
General	
Outline Dimension (W x H x D)	9.33" x 8.27" x 1.97"
Net Weight	2.2Kg (4.85 lbs)
Material	Electronic galvanized Iron
Color	Black
Part / Labor	3year / 3year
Consumption: < On	< 11W
	AC100 ~ 240V(50/60Hz)
Electrical Ratings	DC 12V
Operating Temperature	0° ~ 40° C / 32° ~ 104° F
Storage Temperature	-20° ~ 60° C / -4° ~ 140° F
Mounts	
VESA™ Mount Size	75 x 75mm
Wall	WB-5, WB-10, WB-30
Ceiling	CMK-01

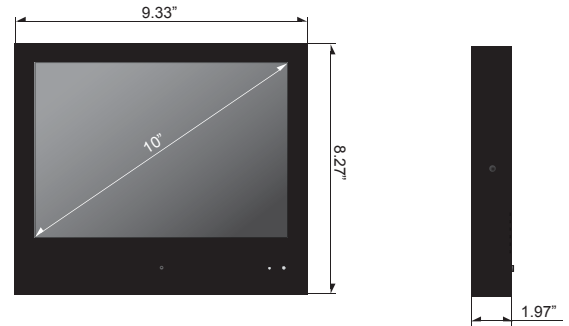
*Design and specifications are subject to change without notice

INPUT INTERFACE

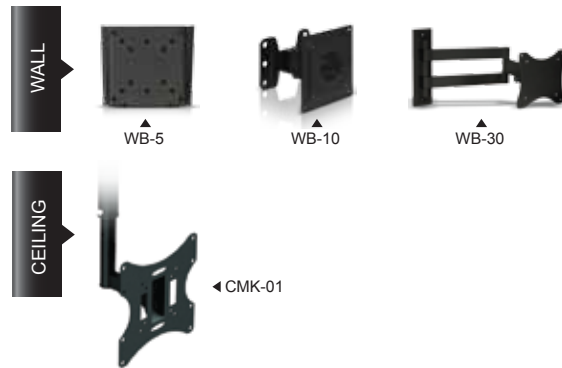


- A** PC Steero In
- B** Audio In (RCA)
- C** Video In / Out
- D** Camera Out
- E** SD Card Slot
- F** VGA In
- G** HDMI In
- H** AC Power

DIMENSIONS



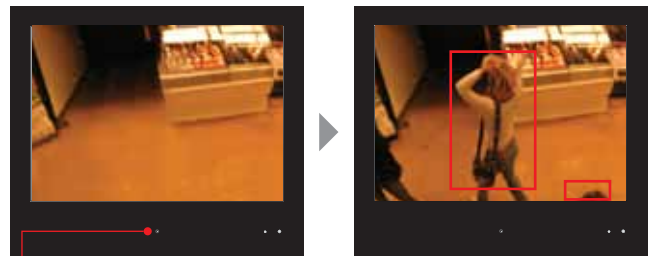
OPTIONAL MOUNTS



ADVANTAGES

Digital Motion Detection

The digital motion detection is part of camera technology that can detect any movement from the camera (as describe below picture).



Digital Motion Detection (Built-In Camera)

Input Cover



Screwless magnetic rear cover lid