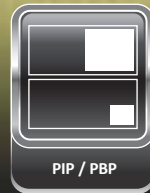
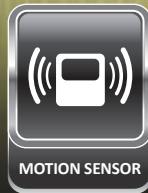
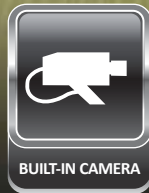


LED

**PUBLIC VIEW**



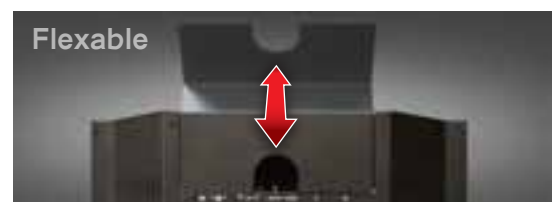
# 19PVMV

## OVERVIEW

The ORION Images 19 inch value PVM (Public View Monitor) with built in camera and motion detection sensor becomes a highly effective theft deterrent tool creating awareness that a security surveillance system is in place. The optional built in media card reader turns your loss prevention display into an advertising and marketing tool using pre loaded marketing material that can loop continuously.

## FEATURES

- » LED Backlight Unit
- » Built-In WDR 1/3" SONY 410K Double Scan CCD
- » Tilt Swivel Camera
- » 600 TV Line Horizontal Resolution
- » 0.4 Lux with F1.2 Lens, 0.0001 Lux (Sens-up x 256)
- » 1280 x 1024 Resolution, 250 Nits, 1000:1 Contrast
- » 3D Comb Filter, Deinterlace, Noise Reduction, Auto Source Sequencing
- » PIR Motion Sensor (10 ~ 30 feet)
- » BNC Video 1 In / 1 Out, Audio 1 In, HDMI 1 In, VGA 1 In, Camera 1 Out, PC Stereo 1 In
- » PIP / PBP Multi Display Function

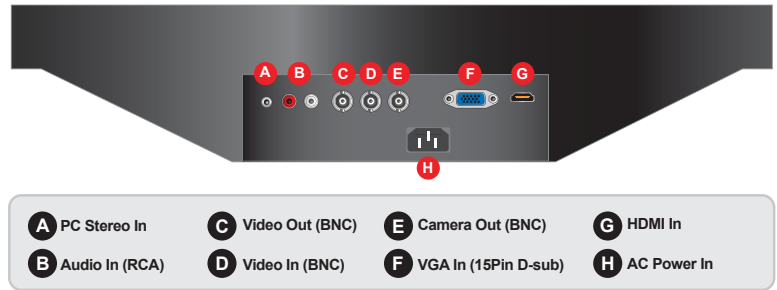


### SPECIFICATIONS

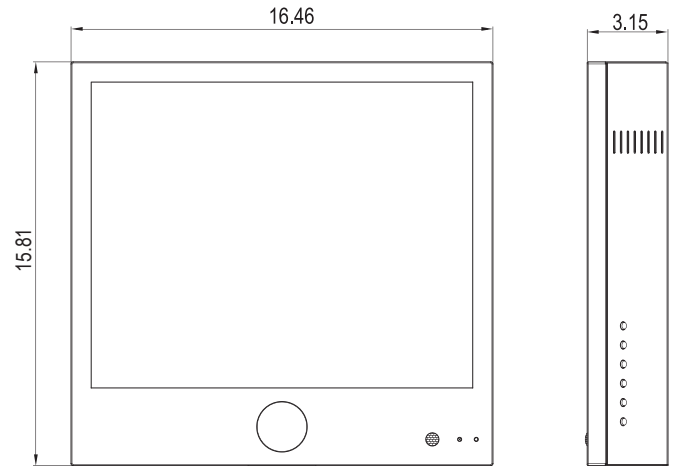
19PVMV	
<b>Display</b>	
Screen Size	19 Inch
Max. Resolution	1280 x 1024 @60Hz
Pixel Pitch	0.294 x 0.294 mm
Brightness	250cd/m <sup>2</sup>
Contrast Ratio	1000 : 1
Aspect Ratio	5 : 4
Viewing Angle (H/V)	170° / 160°
Display Color	16.7 million
Response Time	< 5ms (Gray to Gray)
Video System	NTSC / PAL
<b>Interface</b>	
Video In / Out (BNC Type)	1 / 2 (included Camera out)
HDMI In	1 In
VGA In (15Pin D-Sub)	1 In
Audio In (RCA Type)	1 Left & Right
PC Stereo In	1 In
<b>Transmitter</b>	
Remote Control	Yes
<b>Audio</b>	
Built-in Speakers	Yes (1W x 2)
<b>Features</b>	
Multi Display Function	PIP / PBP
Filter Type	3D Comb Filter
3D Motion Adaptive De-interlacing	Yes
Noise Reduction Control (NR)	Yes
Auto Source Sequencing	Yes
Motion Detection	PIR Motion Sensor (10~30 feet)
Multi Language	English, Spanish, French, German, Italian
<b>General</b>	
Outline Dimension	16.46" x 15.81" x 3.15"
Net Weight	14.33 lbs (6.5 Kg)
Material / Color	Electronic galvanized Iron / Black (White Optional)
Part / Labor	3year / 3year
Consumption: < On	< 30W AC100 ~ 240V(50/60Hz)
Operating Temperature	0° ~ 40° C / 32° ~ 104° F
Storage Temperature	-20° ~ 60° C / -4° ~ 140° F
<b>Mounts</b>	
VESA™ Mount Size	100 x 100mm
Wall	WB-05, WB-10, WB-30, WB-31
Ceiling	CMK-01
<b>Camera</b>	
Camera Type	WDR Camera
Mechanical Design	Tilt Swivel Camera
Scanning System	2 : 1 interface
Image Sensor	1/3" SONY 410K Double Scan CCD
S/N Ratio	>52dB
Resolution	Horizontal : 600 TV Lines
Lens Mount	2.8 ~ 12mm Vari-focal Lens (F=1.4)
Sensitivity	0.4 Lux with F1.2 Lens 0.0001 Lux Sens-up x 256
Electronic Shutter	1/60 ~ 1/100,000 Sec

\*Design and specifications are subject to change without notice

### INPUT INTERFACE



### DIMENSIONS



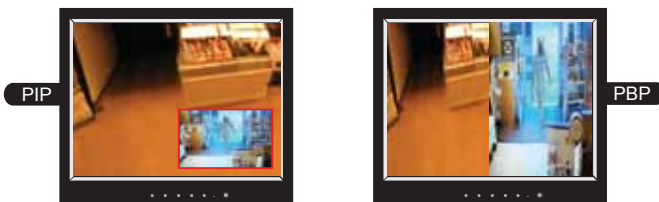
### OPTIONAL MOUNTS



### ADVANTAGES

#### Dual Screen Display / Dual Signal In (Analog - Analog & Digital)

Picture-in-Picture (PIP) mode allows an image from an AV source to be displayed as a picture within the image from a PC source (or vice-versa). Picture-by-Picture (PBP) mode permits images from an AV and PC source to be displayed side by side for split-screen viewing.



#### Noise Reduction

Noise reduction techniques are conceptually very similar regardless of the signal being processed, however a priori knowledge of the characteristics of an expected signal can mean the implementations of these techniques vary greatly depending on the type of signal.

