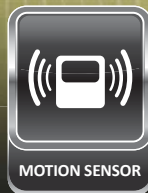
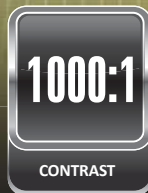
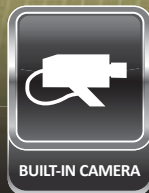
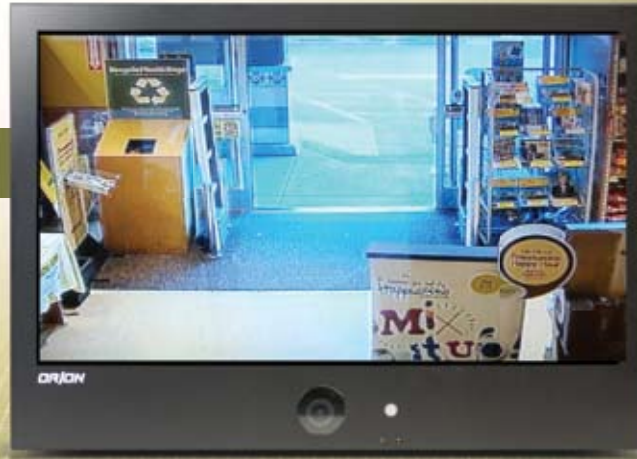


**LED** **FULL HD 1080p**

**PUBLIC VIEW**



# 27PVMV

## OVERVIEW

The ORION Images 27inch value PVM (Public View Monitor) with built in camera and motion detection sensor becomes a highly effective theft deterrent tool creating awareness that a security surveillance system is in place. The optional built in media card reader turns your loss prevention display into an advertising and marketing tool using pre loaded marketing material that can loop continuously.

## FEATURES

- » Metal Chassis
- » Built-In WDR 1/3" Sony Super HAD CCD II Camera / Tilt Swivel Camera
- » 650 TV Line Horizontal Resolution
- » 0.05 / 0.0001 Lux
- » LED Backlight Unit
- » 1920 x 1080 Resolution, 250 Nits, 1000:1 Contrast
- » 3D Motion Adaptative De-Interlacer
- » PIR Motion Sensor (10 ~ 30 feet)
- » BNC Video 1 In / 1 Out, Audio 1 In, HDMI 1 In, VGA 1 In, Camera 1 Out, PC Stereo 1 In
- » Auto Source Sequencing



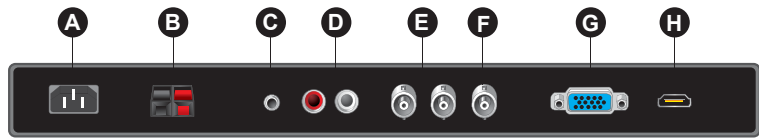
**24/7/365**  
 Built to run 24 x 7 x 365  
 Continuously

### SPECIFICATIONS

27PVMV	
<b>Display</b>	
Screen Size	27 Inch
Backlight Unit	LED BLU
Max. Resolution	1920 x 1080 @ 60Hz
Pixel Pitch	0.3114 x 0.3114mm
Brightness	250cd/m <sup>2</sup>
Contrast Ratio	1000 : 1
Aspect Ratio	16 : 9
Viewing Angle (H/V)	178° / 178°
Display Color	16.7 Million
Response Time	< 8ms
Video System	NTSC / PAL
<b>Interface</b>	
Video In / Out (BNC Type)	1 In / 2 Out (Include Camera Out)
S-Video In	1 In
HDMI In	1 In
VGA In (15Pin D-Sub)	1 In
Audio In (RCA Type)	1 Left & Right
PC Stereo In	1 In
<b>Transmitter</b>	
Remote Control	Yes
<b>Audio</b>	
Built-in Speakers	Yes (1W x 2)
<b>Features</b>	
Filter Type	3D Comb Filter / De-Interlace
Auto Source Sequencing	Yes
Motion Detection	PIR Motion Sensor (10~30 feet)
Noise Reduction	Yes
Multi Language	English, Spanish, French, German, Italian
<b>Camera</b>	
Camera Type	WDR Camera
Image Sensor	1/3" Sony Super HAD CCD II
Scanning System	2 : 1 interlace
Mechanical Design	Tilt Swivel Camera
S/N Ratio	52 dB
Resolution	Horizontal : 650 TV Lines
Lens Mount	4~9mm Vari-focal Lens(F=1.2)
Sensitivity	0.05 / 0.0001 Lux
Electronic Shutter	1/60 ~ 1/10,000 Sec
<b>General</b>	
Outline Dimension (W x H x D)	25.00" x 17.46" x 3.15"
Net Weight	18.5Kg (40.78 lbs)
Material	Electronic galvanized Iron
Color	Black (Optional White)
Part / Labor	2year / 2year
Consumption: < On	< 100W
Electrical Ratings	AC100 ~ 240V(50/60Hz)
Operating Temperature	0 ~ 40° C / 32 ~ 104° F
Storage Temperature	-20 ~ 60° C / -4 ~ 140° F
<b>Mounts</b>	
VESA™ Mount Size	200 x 200mm
Wall	WB-2642
Ceiling	CMK-01 with FMA-01

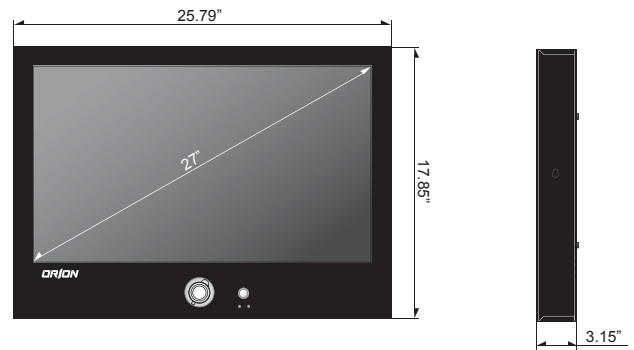
*\*Design and specifications are subject to change without notice*

### INPUT INTERFACE



- A** AC Power
- B** DC 24V
- C** PC Stereo In
- D** Audio In (RCA)
- E** Video In / Out
- F** Camera Out
- G** VGA In
- H** HDMI In

### DIMENSIONS



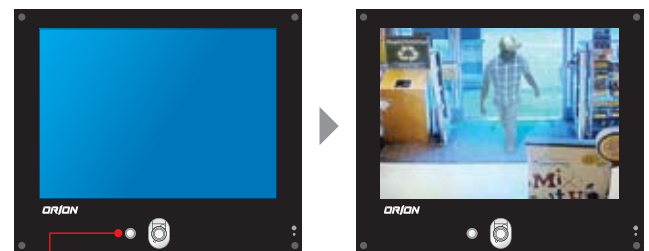
### OPTIONAL MOUNTS



### ADVANTAGES

#### Motion Detection

A motion detector is a device that detects moving objects, particularly people. A motion detector is often integrated as a component of a system that automatically performs a task or alerts a user of motion in an area.



Before detect any motion  
Motion Sensor

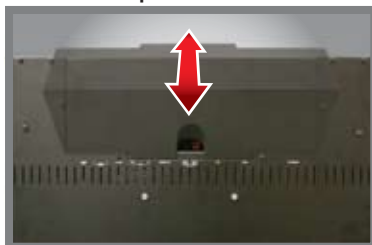
After detect any motion

#### Camera Cover



Screwless magnetic camera cover lid

#### Input Cover



Screwless magnetic rear cover lid