

## CMHT1752N-28F/CMHT1752N-F 5 MP Camera

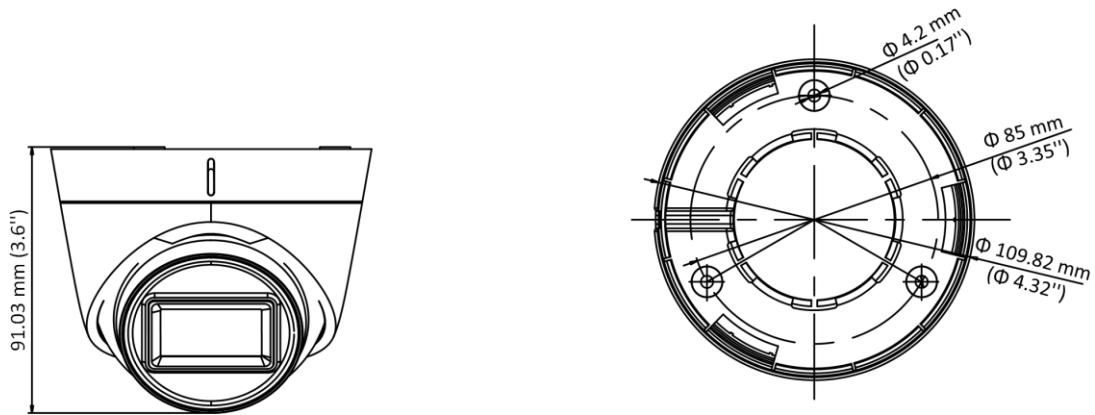


- 5 MP, 2560 × 1944 resolution
- 2.8 mm, 3.6 mm fixed focal lens
- Smart IR, up to 131ft(40 m) IR distance
- 4 in 1 video output (switchable TVI/AHD/CVI/CVBS)
- IP67

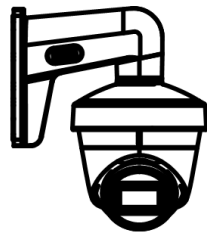
## Specification

| <b>Camera</b>            |   |
|--------------------------|---|
| Image Sensor             | 5 MP CMOS   |
| Signal System            | PAL/NTSC  |
| Resolution               | 2560 (H) × 1944 (V)   |
| Frame Rate               | TVI: 5M@20fps, 4M@30fps, 4M@25fps, 1080p@30fps, 1080p@25fps<br>AHD: 5M@20fps, 4M@30fps, 4M@25fps<br>CVI: 4M@30fps, 4M@25fps<br>CVBS: PAL/NTSC |
| Min. illumination        | 0.01 Lux@(F1.2, AGC ON), 0 Lux with IR  |
| Shutter Time             | PAL: 1/25 s to 1/50, 000 s<br>NTSC: 1/30 s to 1/50, 000 s   |
| Lens                     | 2.8 mm, 3.6 mm fixed lens   |
| Field of View            | 2.8 mm, horizontal FOV: 85°, vertical FOV: 63°, diagonal FOV: 110°<br>3.6 mm, horizontal FOV: 80°, vertical FOV: 63°, diagonal FOV: 105°      |
| Lens Mount               | M12   |
| Day & Night              | ICR   |
| WDR (Wide Dynamic Range) | Digital WDR   |
| Angle Adjustment         | Pan: 0 to 360°, Tilt: 0 to 75°, Rotation: 0 to 360°   |
| <b>Menu</b>              |   |
| Image Mode               | STD/HIGH-SAT  |
| AGC                      | Yes   |
| Day/Night Mode           | Auto/Color/BW (Black and White)   |
| White Balance            | Auto/Manual   |
| AE (Auto Exposure) Mode  | DWDR/BLC/HLC/Global   |
| Noise Reduction          | 2D DNR  |
| Language                 | English   |
| Function                 | Brightness, Sharpness, Mirror, Smart IR   |
| <b>Interface</b>         |   |
| Video Output             | Switchable TVI/AHD/CVI/CVBS   |
| <b>General</b>           |   |
| Operating Conditions     | -40 °C to 60 °C (-40 °F to 140 °F), humidity 90% or less (non-condensing)   |
| Power Supply             | 12 VDC ± 25%  |
| Power Consumption        | Max. 4.3 W  |
| Protection Level         | IP67  |
| Material                 | Front Cover: Plastic<br>Main Body: Metal  |
| IR Range                 | Up to 131ft(40 m)   |
| Communication            | Up the coax, TVI output   |
| Dimensions               | Φ 109.82 mm × 91.03 mm (Φ 4.32" × 3.6")   |
| Weight                   | Approx. 303 g (0.67 lb.)  |

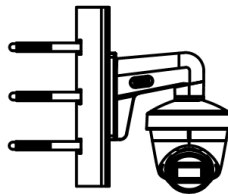
## Dimension



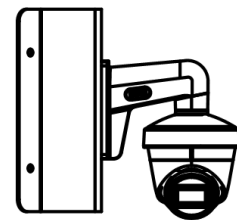
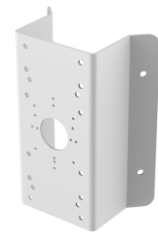
## Accessory



**LTB342-110T**  
Wall Mount



**LTB378**  
Vertical Pole Mount



**LTB379**  
Corner Mount