

# CMT1873 CMT1873B

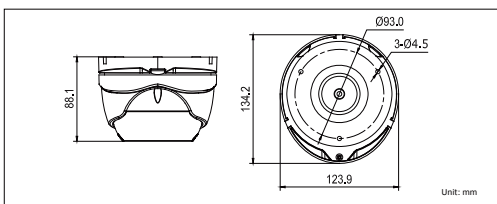
## 700 TVL IR Dome Camera



### Key features

- Aptina Sensor
- 700 TVL horizontal resolution
- 2.8 – 12mm vari-focal lens
- True Day/Night
- Up to 131ft(40m) IR distance
- Smart IR mode
- IP66 weatherproof
- Wide operating temperature range

### Dimensions



CMT1873 CMT1873B	
<b>Camera</b>	
Image Sensor	Aptina Sensor
Signal System	NTSC/PAL(Euro Version)
Effective Pixels	NTSC: 720 (H) × 480 (V); PAL: 720 (H) × 582(V)
Min. Illumination	0.14 Lux (AGC ON), 0 Lux with IR
Shutter speed	NTSC: 1/30 s to 1/30,000 s PAL: 1/25 s to 1/25,000 s
Lens	2.8-12mm
Day & Night	ICR
Horizontal Resolution	700 TVL
Synchronization	Internal synchronization
Video Output	1Vp-p composite output (75 Ω/BNC)
S/N Ratio	More than 62 dB
<b>General</b>	
Working Temperature/ Humidity	-40° F - 140° F (-40° C - 60° C) Humidity 90% or less (non-condensing)
Power Supply	12 VDC
Power Consumption	Max. 5W
Ingress Protection	IP66
IR Range	131ft(40m)
Dimensions	5.3" × 4.9" × 3.5" (134.2×123.9× 88.1 mm)
Weight	1.8 lb(800g)