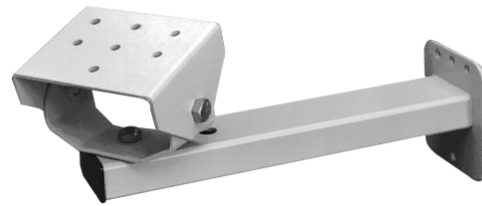


# EM2400 Mount

## WALL MOUNT, LIGHT-DUTY, ENCLOSURE

### Product Features

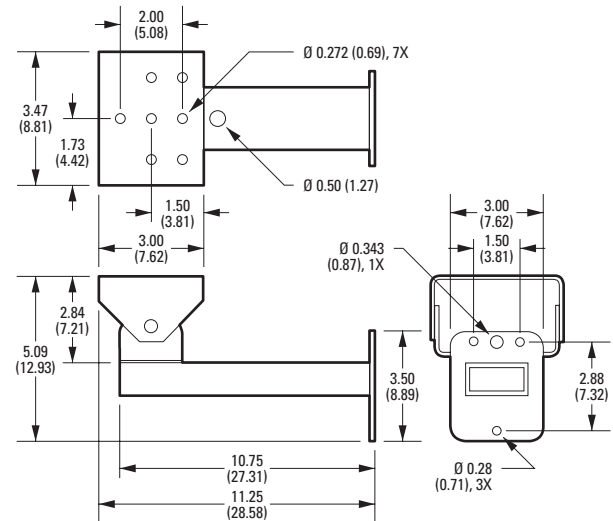
- Light Duty Wall Mount
- Adjustable Head
- Supports up to 20 lb (9.07 kg)
- Accommodates EH4000 Series Enclosures and Light- to Medium-Weight Cameras
- Cable Feedthrough Hole Conceals Wiring
- Can be Adapted for Pole Mount Applications with Use of PA101 Adapter



The **EM2400** is a light duty wall mount capable of supporting a maximum load of 20 pounds (9.07 kg). This mount is primarily for use with our EH4010 and EH4014 enclosures, but it can be used with other lightweight enclosures or light-to-medium-weight large format cameras.

The **EM2400** is constructed of aluminum and also features an adjustable head, which allows mechanical positioning of the camera or enclosure. In addition to the removable front end cap, there is also a half-inch diameter cable feedthrough hole in the mounting arm that conceals the camera or enclosure wiring.

In addition, the **EM2400** can be adapted for pole mount applications when used with the PA101 pole mount adapter.



NOTE: VALUES IN PARENTHESES ARE CENTIMETERS;  
ALL OTHERS ARE INCHES.



# TECHNICAL SPECIFICATIONS

## MODEL

EM2400

Light duty wall mount with cable feedthrough for EH4010/EH4014 enclosures and light-to-medium-weight large format cameras; manually adjustable swivel head.

## MECHANICAL

Pan Adjustment

360°

Tilt Adjustment

±90°

## GENERAL

Enclosure Mounting

Two 1/4-20 x 0.625 hex head machine screws (supplied)

Suggested

Mounting Method

Secure to solid surface with three 1/4-inch diameter fasteners (not supplied) or use one 5/16-inch diameter and one 1/4-inch diameter fastener for center mount holes in applications where wall studs are encountered

Cable Feedthrough

One 0.50-inch (1.27 cm) diameter hole in mount arm

Construction

Aluminum

Finish

Gray polyester powder coat

Maximum Load

20 lb (9 kg)

Unit Weight

EM2400  
2.75 lb (1.25 kg)

PA101

0.88 lb (0.40 kg)

Shipping Weight

EM2400

4 lb (1.81 kg)

PA101

2 lb (0.90 kg)

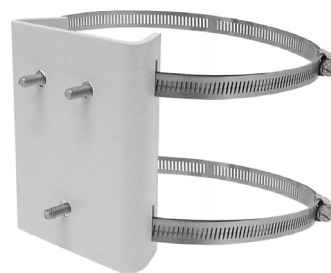
## CERTIFICATIONS

- UL Listed

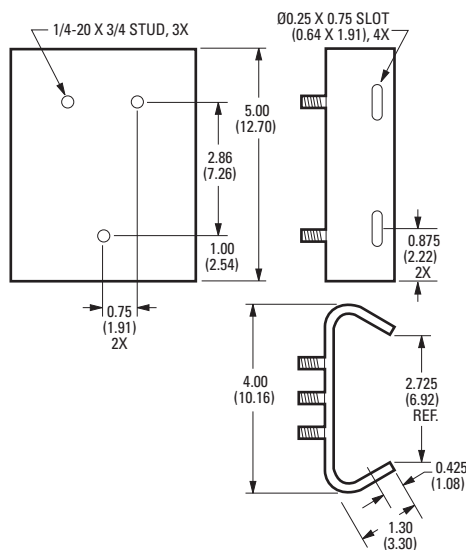
## OPTIONAL MOUNT ADAPTER

PA101

Pole mount adapter for EM2400 mount. Stainless steel straps supplied. Straps fit 3-inch (7.62 cm) to 8-inch (20.32 cm) diameter pole.



PA101 POLE ADAPTER



NOTE: VALUES IN PARENTHESES ARE CENTIMETERS; ALL OTHERS ARE INCHES.



**Pelco, Inc. Worldwide Headquarters:**

3500 Pelco Way, Clovis, California 93612-5699 USA

**USA & Canada** Tel: (800) 289-9100 • FAX: (800) 289-9150

**International** Tel: +1 (559) 292-1981 • FAX: +1 (559) 348-1120

[www.pelco.com](http://www.pelco.com)

Pelco and the Pelco logo are registered trademarks of Pelco, Inc. Product specifications and availability subject to change without notice. ©Copyright 2008, Pelco, Inc. All rights reserved.