

# Fire Sprinkler Monitoring Product Catalog



 **POTTER**  
*The Symbol of Protection*

# CONTENTS:

Flow Switches .....	2
Pressure Switches .....	6
Tamper and Supervisory Switches .....	10
Testing Solutions .....	12
Monitoring Solutions .....	12
Treatment Solutions .....	13
Explosion Proof Devices .....	14
Releasing Panels .....	16
Digital Communicators .....	17
Notification Appliances .....	18
Conventional Smoke and Heat Detectors .....	20
Pull Stations .....	21
Ordering Information .....	22
Residential Waterflow Switch Applications Drawing .....	26
Dry Pipe Sprinkler System Drawing .....	27
Wet Pipe Sprinkler System Drawing .....	28
Pre Action Deluge System Drawing .....	29

Potter Electric Signal Company, LLC  
1609 Park 370 Place  
St. Louis, MO 63042

866.572.3005      Fax: 800.768.8377  
Tech Support: 866.956.0988  
[www.pottersignal.com](http://www.pottersignal.com)

Canada: 888.882.1833      Fax: 416.741.1822  
Asia/Pacific: 65.9682.8998      Fax: 65.6481.2902

## Potter Electric Signal Company, LLC

Established in 1898, Potter Electric Signal Company has earned a reputation worldwide as an elite provider of goods and services. Potter produces a wide array of products including fire sprinkler monitoring systems, electronic fire systems, and vault and safe security systems. With more than 110 years of sprinkler monitoring experience, Potter is also the trusted source for corrosion testing, monitoring, and treatment with our comprehensive suite of corrosion solutions.

At Potter, not only do we supply our customers with products that provide real world solutions for their unique needs, we strive to provide them unequalled service and technical support.

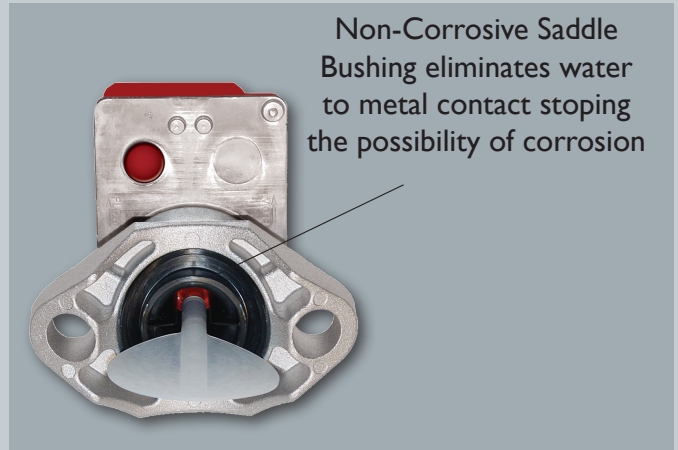
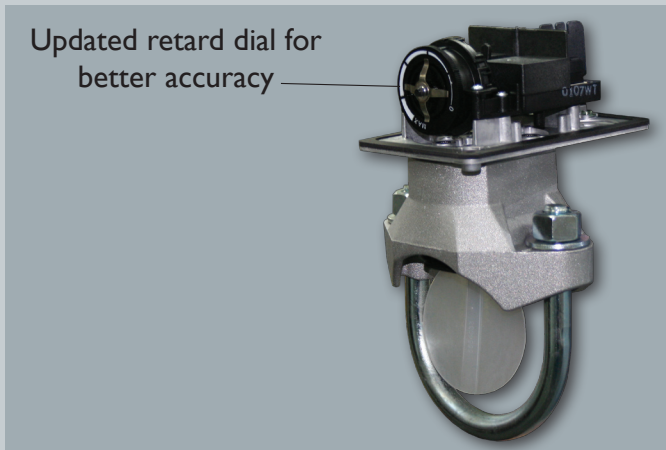
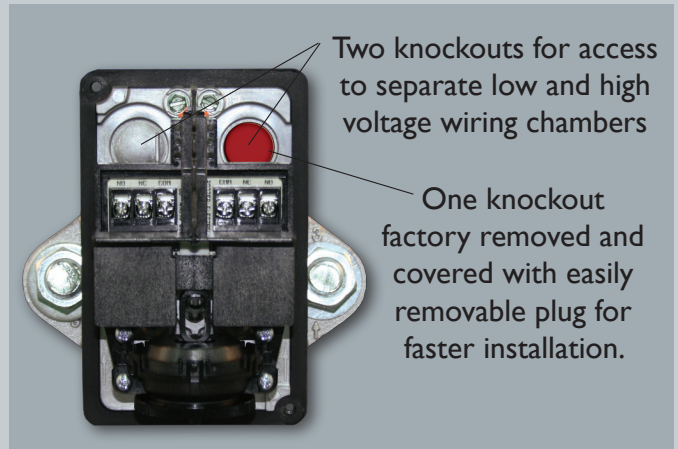
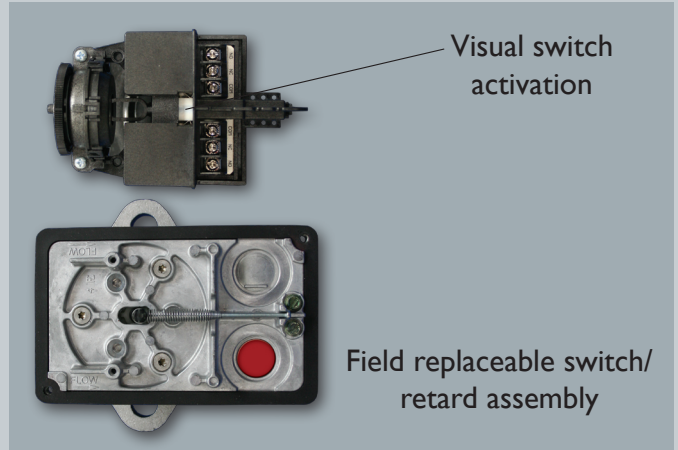
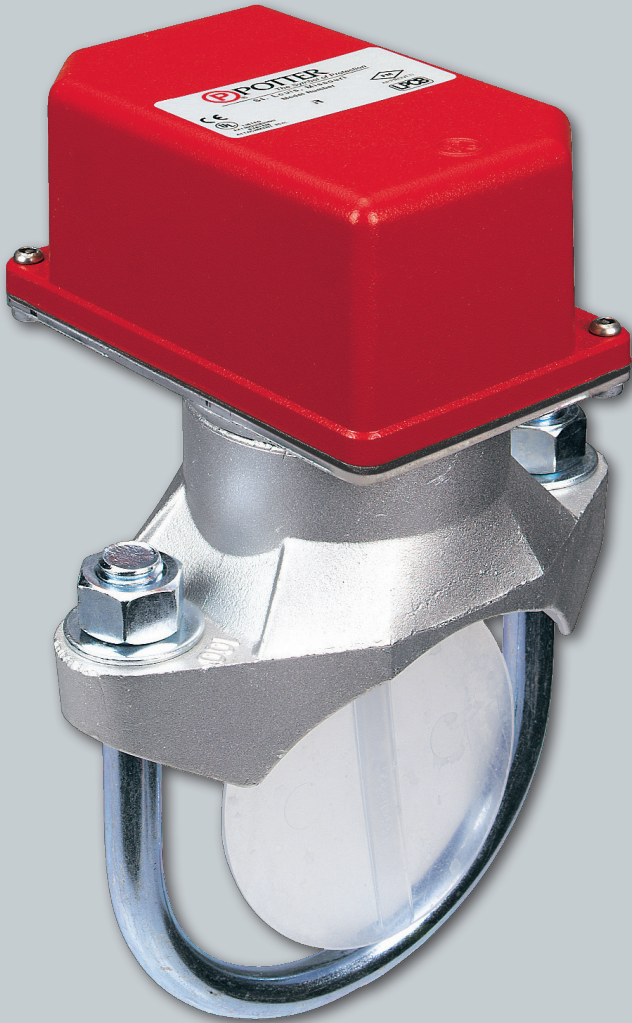
At Potter you will always receive prompt reliable service from our dedicated team of professionals.

Every employee at Potter is committed to providing you, the customer, the peace of mind in knowing that when you purchase our products, you are providing your customers the very best product available for the protection of life and property.

Potter is THE Symbol of Protection.



# FLOW SWITCHES





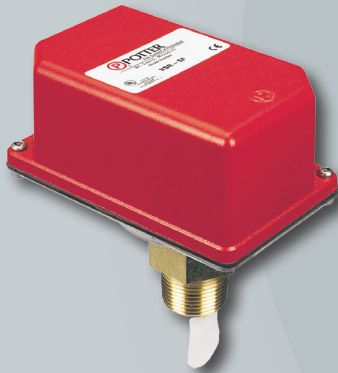


## VSR

### Waterflow Alarm Switch

- NEMA 4 solid metal enclosure
- Factory installed neoprene gasket
- 0-90 second **field replaceable** pneumatic retard
- 450 psi system pressure rated
- Synchronized switch action
- 5-year warranty
- Listings: UL, cUL, FM, LPCB, CSFM, NYMEA, and CE

*VSR-EU has a 30 second retard and is VdS, EN 12259-5 and LPCB approved*



## VSR-S

### Waterflow Alarm Switch Small Pipe

- NEMA 4 solid metal enclosure
- Factory installed neoprene gasket
- 0-90 second **field replaceable** pneumatic retard
- 300 psi system pressure rated
- Two 1/2" KOs for dual voltage applications
- 1" threaded brass bushing fits pipe sizes 1"-2"
- Ideal for both commercial and residential applications.
- 5-year warranty
- Listings: UL, cUL, CSFM, and NYMEA

*VSR-S EU is EN 12259-5 and LPCB approved*



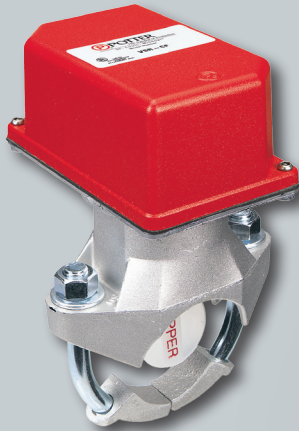
## VSR-SG/ST

### Waterflow Alarm Switch With Union

- NEMA 4 solid metal enclosure
- Factory installed neoprene gasket
- 0-90 second **field replaceable** pneumatic retard
- 175 psi system pressure rated
- 1" male CPVC fitting or 1" NPT bushing
- Fits CPVC pipe sizes 1", 1 1/4", 1 1/2", and 2"
- Special fitting allows for installation in confined spaces
- 5-year warranty
- Listings: UL, cUL, CSFM, and NYMEA



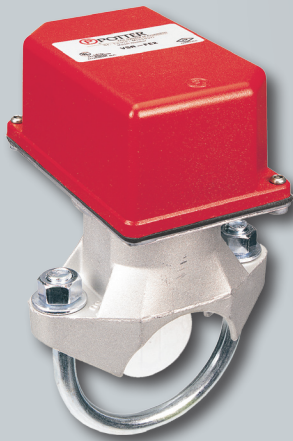
# FLOW SWITCHES



## VSR-C

### Waterflow Alarm Switch For Copper Pipe

- NEMA 4 solid metal enclosure
- Factory installed neoprene gasket
- 0-90 second pneumatic retard
- 175 psi system pressure rated
- Non-corrosive saddle bushing
- Two 1/2" KOs for dual voltage applications
- Pipe Sizes: 2", 2 1/2", 3", 4" for type K, L, and M copper pipe
- 5-year warranty
- Listings: UL, CSFM, and NYBSA



## VSR-FE-2

### Waterflow Alarm Switch With Electronic Retard

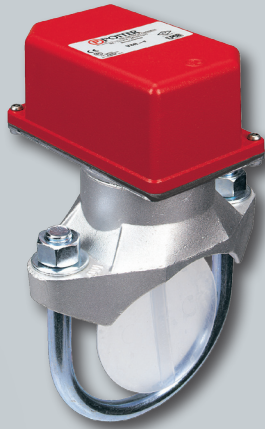
- NEMA 4 solid metal enclosure
- Factory installed neoprene gasket
- 0-90 second electronic retard
- 450 psi system pressure rated
- Non-corrosive saddle bushing
- Two 1/2" KOs for dual voltage applications
- Pipe schedules 10-40 Sizes 2"-8"
- 5-year warranty
- Listings: UL, ULC and FM



## VS-SP

### Special Application Waterflow Switch Without Retard

- NEMA 4 solid metal enclosure
- Factory installed neoprene gasket
- 250 psi system pressure rated
- One SPDT (Form C) contact second set of contacts optional
- 1" solid brass threaded bushing
- Twelve paddles provided for use on plastic, copper, and schedule 40 pipe
- 5-year warranty
- Listings: UL, cUL, CSFM, NYBSA, and CE



## VSG

### Waterflow Alarm Switch For Low Flow

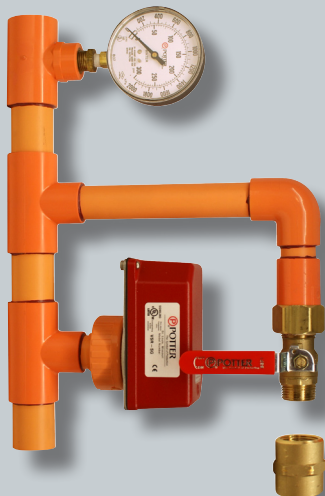
- NEMA 4 solid metal enclosure
- Factory installed neoprene gasket
- 0-90 second electronic retard
- 450 psi system pressure rated
- Non-corrosive saddle bushing
- Two 1/2" KOs for dual voltage applications
- Pipe Sizes 2", 2 1/2", 3", 4"
- Operates at 4 GPM, specially designed for water mist systems
- 5-year warranty
- Listings: UL and CSFM



## WFSR-F

### Pressure Activated Waterflow Alarm Switch With Retard

- NEMA 4 solid metal enclosure
- Factory installed neoprene gasket
- 0-90 second pneumatic retard
- 175 psi system pressure rated
- 1/2" male NPT fitting
- Eliminates the need for retard chambers
- Two 1/2" KOs for dual voltage applications
- 5-year warranty
- Listings: UL, cUL, CSFM, FM, NYMEA, and CE

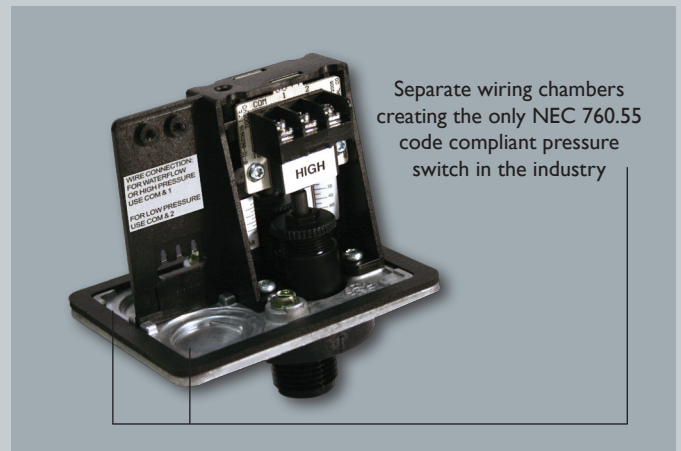
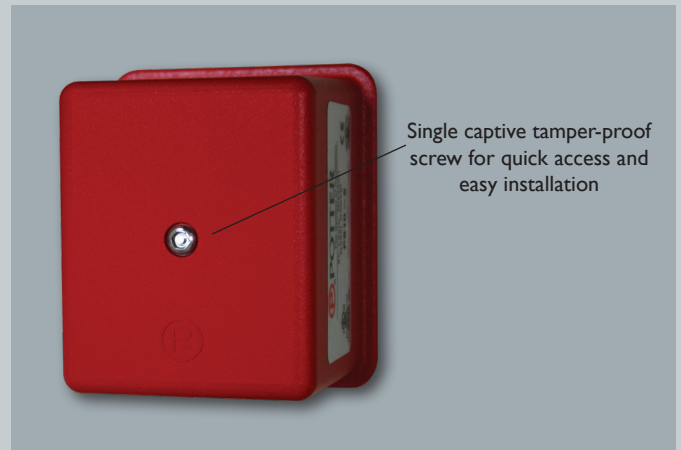


## RD13

### Residential Riser

- Service pressure up to 175 psi
- Unit includes VSR-SG
- Drain and test valve
- Pressure gauge
- Service usage, NFPA 13D & 13R
- Sizes: 1", 1 1/4", 1 1/2", 2"
- 5-year warranty on VSR-SG

# PRESSURE SWITCHES & PERIPHERALS





# PRESSURE SWITCHES & PERIPHERALS

## PS10-1 & 2

### Pressure Type Waterflow Alarm/Supervisory Switch



- NEMA 4 solid metal enclosure
- Factory installed neoprene gasket
- Pressure range 4-15 psi
- 300 psi system pressure rated
- 1/2" male NPT fitting
- Two 1/2" knockouts for dual voltage applications
- Separate isolated wiring chambers eliminate NEC questions regarding multi-voltage applications
- Factory set for operation at:  
*Pressure Increase at 6 psi*  
*Pressure Decrease at 5 psi*
- PS10-1, one set of SPDT (Form C)
- PS10-2, two sets of SPDT (Form C)
- 5-year warranty
- Listings: UL, cUL, CSFM, FM, LPC, NYMEA, and CE

PS10 'VdS' is listed with UL, FM, VdS, CUL, LPCB, and CFSM

## PS40-1 & 2

### High/Low Pressure Switch



- NEMA 4 solid metal enclosure
- Factory installed neoprene gasket
- Pressure range 10-60 psi
- 300 psi system pressure rated
- 1/2" male NPT fitting
- Two 1/2" knockouts for dual voltage applications
- Separate isolated wiring chambers eliminate NEC questions regarding multi-voltage applications
- Factory set for operation at:  
*PS40-1 Pressure Decrease at 30 psi*  
*PS40-2 Pressure Increase at 50 psi, Pressure Decrease at 30 psi*
- Independent switch adjustment allows easy adjustment of one switch without affecting the other switch
- 5-year warranty
- Listings: UL, cUL, CSFM, FM, LPC, NYMEA, and CE

PS40 'VdS' is listed with UL, FM, VdS, CUL, LPCB, and CFSM



## PS40-TM

### Completely Pre-Assembled Low Pressure Test Module

- For use on dry pipe and pre-action systems
- Includes PS40-2 pressure switch, BVL bleeder valve, and easy to read, high quality, pressure gauge pre-assembled with galvanized pipe
- Meets the requirement of NFPA 72, 2010, 17.16.2.2 and NFPA 25, 2011, 13.4.4.2.6
- Eliminates accidental tripping of the dry pipe valve during testing

# PRESSURE SWITCHES & PERIPHERALS



## PS100

### Pressure Type Waterflow Alarm/Supervisory Switch

- NEMA 4 solid metal enclosure
- Factory installed neoprene gasket
- 300 psi system pressure rated
- Pressure range 25-175 psi
- 1/2" male NPT fitting
- Two 1/2" knockouts for dual voltage applications
- Separate isolated wiring chambers eliminate NEC questions regarding multi-voltage applications
- Factory set for operation at 90 psi on pressure decrease
- 5-year warranty
- Listings: UL, ULC, CSFM, FM, LPC, NYMEA, and CE

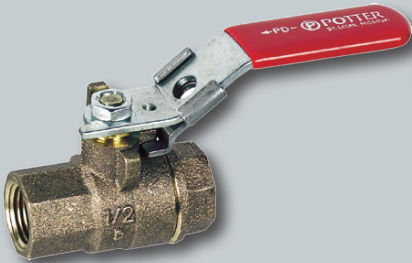


## PS120-1 & 2

### High/Low Pressure Switch

- NEMA 4 solid metal enclosure
- Factory installed neoprene gasket
- 300 psi system pressure rated
- Pressure range 25-175 psi
- 1/2" male NPT fitting
- Two 1/2" knockouts for dual voltage applications
- Separate isolated wiring chambers eliminate NEC questions regarding multi-voltage applications
- Factory set for operation at:
  - PS120-1 pressure decrease at 110 psi
  - PS120-2 pressure increase at 130 psi, pressure decrease at 110 psi
- 5-year warranty
- Listings: UL, ULC, CSFM, FM, LPC, NYMEA, and CE

*PS120 'VdS' is listed with UL, FM, VdS, CUL, LPCB, and CFSM*



## BVL

### Lever Type Bleeder Valve

- For use as a test valve for supervisory pressure switches on wet pipe sprinkler systems that have excess pressure and dry pipe sprinkler systems
- Should be installed in-line with pressure device
- Convenient means for removal or testing the pressure actuated device without affecting the pressure in the system
- 1/2" NPT connections

# PRESSURE SWITCHES & PERIPHERALS



## PCS Pump Control Switch

- Independent set and reset points
- Adjustable operating range 25-300 PSIG
- 12 PSI minimum deadband
- NEMA 4X enclosure for indoor or outdoor use
- Ambient/media temperature range: 40°F to 140°F (4.5°C to 60°C)
- 1/2 HP rated switch
- Listings: UL, CE, and CSA



## ADPS Adjustable Deadband Pressure Switch

- Independent set and reset points
- Adjustable operating range 25-300 PSIG
- 12 PSI minimum deadband
- NEMA 4X enclosure for indoor or outdoor use
- Ambient/media temperature range: -4°F to 180°F (-20°C to 82°C)
- For use with motor starter/contactors
- Listings: UL, CE, and CSA

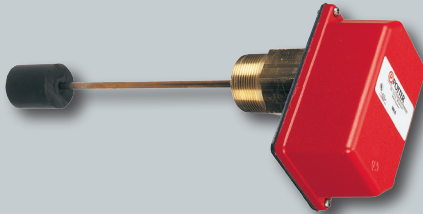
# TAMPER & SUPERVISORY SWITCHES



## PTS-C

### Plug Type Supervisory Switch

- NEMA 6P submersible
- Factory installed neoprene gasket
- SPDT contacts 100mA at 28VDC/AC, 250mA at 12VDC/AC
- SPDT cover tamper 250mA at 28VDC/AC
- Dimensions 7"L x 3.75"W x 3"D (including bracket)
- Temperature rating -40°F to 140°F
- 5-year warranty
- Listings: UL, cUL, FM, NYMEA, and CSFM



## WLS

### Tank Water Level

- NEMA 4 solid metal enclosure
- Detection range before 3" rise/ before 3" fall of water level
- Detection of 12" drop in water level
- Maximum pressure 175 psi
- Usage steel or wooden tanks
- Works on pressure or gravity tanks
- Listings: UL, NYMEA, and CSFM



## RTS-O/C

### Room Temperature Switch

- Designed to warn of potential sprinkler pipe freezing or other cold detection applications
- White ABS enclosure
- Epoxy sealed stainless steel case, bimetallic operating mechanism sensor
- Silver clad contacts
- RTS-O: Normally Open
- RTS-C: Normally Closed
- Temperature setting: 40°F ±5°F, 5°C ±3°C
- UL and cUL listed for fire sprinkler supervisory service



## TTS

### Tank Temperature Switch

- NEMA 4 enclosure
- Operates at 40°F and 140°F
- Available for steel or wood tanks
- Listings: UL, FM, CSFM, and MEA



# TAMPER & SUPERVISORY SWITCHES



## OSYSU-1 & 2

### Outside Screw & Yoke Valve Supervisory Switch

- NEMA 6P (Submersible)
- Factory installed neoprene gasket
- OSYSU-1: One set of SPDT (Form C)
- OSYSU-2: Two sets of SPDT (Form C)
- Fits 1/2"-12" valves
- Fully adjustable stainless steel trip rod cuts installation time by 75%
- Installs on OS&Y valves in any position
- 5-year warranty
- Listings: UL, cUL CSFM, FM, NYMEA, and CE



## PCVS-1 & 2

### Control Valve Supervisory Switch

- NEMA 6P (Submersible)
- Factory installed neoprene gasket
- PCVS-1: One set of SPDT (Form C)
- PCVS-2: Two sets of SPDT (Form C)
- 1/2" male NPT fitting
- Fully adjustable stainless steel trip rod
- Installs on wall and post indicator valves, butterfly valves in any position
- 5-year warranty
- Listings: UL, cUL, CSFM, FM, NYMEA, and CE



## RBVS

### Retrofit Ball Valve Switch

- Monitors alarm line ball valves
- Perfect for backflow preventers 1" - 2"
- Mounts on standard & "T" style valves
- NEMA 4 rated enclosure for indoor and outdoor use
- Fits virtually any 1/2" - 2" ball valve
- Optional cover tamper switch
- US Patent 6,945,509
- Meets the requirements of NFPA 13, 2010, 18.17.1 and IBC/IFC 2009, 903.4
- Listings: UL, cUL, NYMEA, and FM Approved



## WCS

### Water Column Switch

- Used for Dry Pipe/Pre-action systems
- Detects presence of water above clapper
- NEMA 1 rated enclosure for indoor use
- 175 psi maximum pressure
- SPDT 10 Amps at 120 VAC, 2.0 Amps at 30 VDC resistive
- Automatic reset
- Patent pending
- Listing: UL

## Bac-Pak



- Easy do-it-yourself test
- Tests for the three most common MIC causing bacteria
- Water in vial changes to color of lid, if bacteria present

## Water Test Kit



- Complete MIC analysis through water sample
- Kit comes with prepaid return envelope for analysis
- Complies with NFPA 13, requiring MIC testing of the water supply
- Detailed report of findings is issued within 2 weeks

## Dissolved Iron Water Test Kit



- Monitors the effectiveness of corrosion mitigation programs
- Keeps track of general corrosion within a fire sprinkler system
- Degree of "Redness" of sampled water indicates level of dissolved iron

## 5-Year Deposit/Sludge Test Kit



- Designed to conform to the requirements of NFPA 25 requiring testing for MIC if slime or tubercles are discovered during an internal inspection
- Kit comes with prepaid return envelope for analysis
- Detailed report of findings is issued within 2 weeks

## PCMS-RM

### Potter Corrosion Monitoring Station Riser Mount



- For wet or dry systems
- Installs on riser for easy access
- 3 outlets for coupons and probe
- Sight glass to view internal conditions
- Air inlet valve
- Includes one steel and one brass coupon
- Shown with optional PCMPK installed
- Patent pending
- Ships assembled
- 250 PSI rated
- Allows for inspections and samples without disabling sprinkler system



## PAV

### Potter Air Vent

- Provides automatic venting of trapped air in fire sprinkler systems
- Limits oxygen corrosion when placed at the high point(s) of the systems
- UL listed and FM approved air vent for use on fire sprinkler branch lines

## PCMPK

### Probe Assembly with PS10-1



- Used in conjunction with any corrosion monitoring station or as a stand alone corrosion monitoring probe
- Pressure switch trips when corrosion affects probe
- Provides notification when coupons need replacement
- Patent pending
- Probe simulates 5 years of allowable pipe loss in schedule 10 pipe (FM Data Sheet 2-1)

## PAAR-B

### Potter Automatic Air Release (Patented)

- Helps eliminate air/water interface line where corrosion often thrives
- Mechanical fail safe Water Shutoff Valve
- Electrically supervised Water Shutoff Valve
- Visual indication of Water Shutoff Valve operation
- Prevents damage from water spray, drips, or leaks from air vent
- Complete unit ready to install at high points in the sprinkler system
- UL listed and FM approved air vent for use on fire sprinkler branch lines





## Potter Pipe-Shield® Corrosion Inhibitor

- Patent pending, biostatic, environmentally friendly corrosion inhibitor
- Available in 5, 15, 55 and 275 gallon sizes
- Developed to protect wet, dry, and pre-action fire sprinkler systems from MIC (Microbiologically Influenced Corrosion) and oxygen corrosion
- Non-regulated, non-hazardous and completely biodegradable with a neutral pH



## PCIS-B

### Portable Chemical Injection System

- Fully self-contained portable version of the PCDS
- Durable shipping container
- Can be shipped via normal carrier service
- Pumps directly from chemical container into system
- Weighs only 48 lbs



## PCDS-B

### Potter Chemical Delivery System

- Metered dosing of corrosion inhibiting treatment fluid
- Cabinet can house two (2) 15 gallon containers of Pipe-Shield
- Optional secondary containment tank prevents chemical spills



## CDP

### Corrosion Dry Pak

- Delivers moisture free air with a dew point of -40°F
- Completely pre-assembled
- UL/FM air maintenance device included
- Fully integrated control panel
- Hour meter
- Oversized mufflers
- 30 gallon receiver
- Single and three phase versions



## NGP Series

### Nitrogen Generators

- Slows oxygen corrosion
- Ultra low dew point
- Convenient, on demand generation of nitrogen
- Environmentally friendly
- Simple installation

# EXPLOSION PROOF DEVICES



## PIVS-U-EX

### Explosion Proof Post Indicator Valve Switch

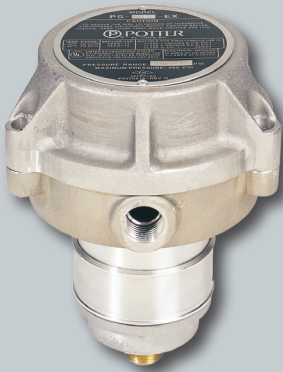
- Installs on post indicator valves and butterfly valves
- 1/2" mounting nipple
- Contact rating: 15 AMPS at 125 VAC, 1/2 AMP at 125 VDC
- -40° to 140°F
- UL listed enclosure NEMA 1, 7, 9



## OSYS-U-EX

### Explosion Proof OS & Y Switch - Universal

- Installs on OS & Y valves 1/2"-2"
- Contact rating: 15 Amps at 125 VAC, 1/2 Amp at 125 VDC
- -40° to 140°F
- UL listed enclosure NEMA 1, 7, 9

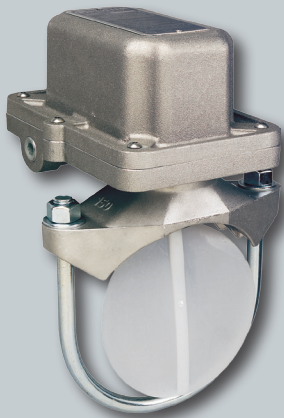


## PS10-EX and PS40-EX

### Explosion Proof Pressure Switches

- NEMA 4 and 9 solid metal enclosure
- 250 psi system rated pressure
- 1/2" NPT male brass fitting
- PS10-EX set for operation at:
  - Two switches operate on pressure increase at 6 psi
  - Two switches operate on pressure decrease at 5 psi
- PS40-EX set for operation at:
  - One switch operates on pressure decrease at 30 psi
  - Second switch operates on pressure increase at 50 psi
- 1-year warranty
- Listings: UL, cUL, CSFM, FM, and NYMEA

*PS10-EXF and PS40-EXF are listed with UL, FM, CUL, CSFM, NYMEA, and ATEX*



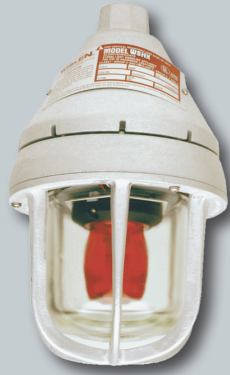
## VSR-FEX

### Explosion Proof Vane Type Waterflow Switch

- NEMA 4 and 9 solid metal enclosure
- 0-90 second pneumatic retard
- 450 psi system pressure rated
- Non-corrosive saddle bushing
- Two 1/2" threaded connections for conduit
- Pipe schedules 10-40 sizes 2"-8"
- 1-year warranty
- Listings: UL, cUL, CSFM, ATEX, and FM



# EXPLOSION PROOF DEVICES



## FSEX-24 PMR

### Explosion Proof Strobe

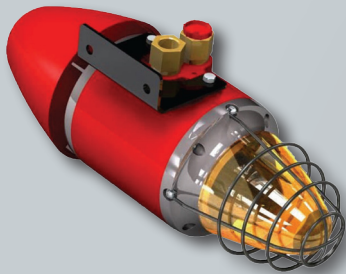
- 24VDC
- Corrosion resistant housing
- Indoor or outdoor mounting
- Polarized
- Listings: UL, CSFM and MEA approved



## FHEX-24 SMR

### Explosion Proof Horn

- 24VDC
- Heavy duty, copper free cast aluminum housing
- NEMA 4X, IP66 enclosure
- Listings: UL and cUL



## YL6

### Explosion Proof Horn/Strobe

- 24VDC
- Low current draw
- Aluminum enclosure
- Flash rate of one per second
- 110 dB at one meter sounder
- Listings: UL and cUL



## RMS-6T-EXP-WP

### Explosion Proof Pull Station

- Marine & NEMA 4X rated
- Weather proof
- ADA compliant
- Allen Key reset
- DPDT switch
- Screw terminal connections
- Listings: UL, FM, CSFM, and NYMEA

# RELEASING PANEL



## PFC-4410RC Water or Agent Extinguishing Panel

- 4 Class B programmable initiating zones
- Compatible with up to 10,000' of Linear Heat Detection per zone
- 2 dedicated Class B supervisory zones
- 4 programmable Class B outputs
- 32 character LCD display
- 34 LED display
- 20 pre-configured programs
- On-board programming
- 40 event history buffer
- Single or double interlock
- Single or dual hazard
- Alarm, trouble, supervisory, and waterflow relays standard
- 1 abort circuit
- Listings: UL, ULC, FM, CSFM, and NYMEA



## PFC-6075R Addressable Releasing Panel

- Built in SLC capable of supporting 75 Potter/Nohmi protocol devices
- 5.0 Amp 24vdc Power Supply
- 2 NACs each rated at 3.0 Amps max
- 2 I/O Circuits each rated at 1.0 Amps max
- Listed for manual release abort or release circuit
- Support for all major synchronization patterns
- Built-in Ethernet port for programming and network connectivity
- Built-in email support to communicate system status and event information
- P-Link RS-485 bus supports system accessories
- 1,000 event non-volatile history buffer
- Learn mode enrolls connected sensors and modules for efficient system programming
- Listed with pre-action, deluge, and agent systems
- UL listed, CSFM, NYC Fire Department Certificate of Approval

## RA-4410RC

### Remote Annunciator



- Up to 4 annunciators can be connected to each PFC-4410RC
- Rotary switches on panel and annunciator to supervise
- Trouble/Supervisory buzzer
- Separate LED's for various alarms
- Lamp test/buzzer silence switch
- Slide-in zone & output notification labels
- Listings: UL, cUL, CSFM, FM, and MEA

## RA-6075R

### LCD Annunciator



- Used with PFC-6075R
- 32 character LCD display
- Compact metal box with key lock
- Identical keypad to PFC-6075R
- Provides Release and Pre-Release LED's to indicate releasing status



## Abort Switch

- One N.O. momentary contact
- 5 Amps @ 24VDC (10 mA minimum)
- Indoor use only
- Listings: UL and FM

## ARM-44

### Relay Module



- Provides 8 Form C relay outputs
- Selectable latching or common setting
- Multiple operating modes
- Listings: UL, cUL, CSFM, FM, and MEA when used inconjunction with the PFC-4410RC

## RCDS-I

### Releasing Circuit Disable Switch



- One N.O. key operated switch
- 4 Amps @ 120/240 VAC 2.5 Amps @ 125 VAC
- 24VDC 50 mA
- Indoor use only
- Creates supervisory condition on associated release panel
- Replaces software controlled disconnect
- Temperature range -22°F to 140°F (-30°C to 60°C)
- Complies with NFPA 72 requirements
- Listings: UL and cUL

## Auxiliary Relay Module

### ARM-1 and ARM-2



- 40mA at 24VDC
- 10 amps resistive
- 120/240 VAC, 0-30 VDC
- 4 DPDT contacts (ARM-1)
- DPDT contacts (ARM-2)
- Listings: UL in conjunction with the PFC-4410RC, FM in conjunction with the PFC-4410RC (ARM-2 only)

# DIGITAL COMMUNICATORS

## PFC-750I

### Fire Alarm Communicator

- 1.5 Amp notification circuit
- 500 mA auxiliary output
- One class A (Style D) waterflow zone
- Will support 4 zones of smoke detectors
- Four class B initiating zones
- Two optional Form C relays
- Built-in dual phone line module with line monitoring
- LCD or LED Annunciators
- Fire Drill feature
- Contact ID, 4-2 or DMP SDLC communication formats
- Remote programmable
- Available cross zoning
- 16.5 VAC, 12 or 24 VDC power input
- Listings: UL, CSFM, and MEA



## RA-7630

### LCD Annunciator



- 32 character LCD
- Programmable zone labels
- Also PFC-7500 series programmer
- Powered from PFC-7500
- Passcode protection or key operated
- LED power indicator
- Listings: UL and CSFM

## RA-7692

### LED Annunciator



- Zone Alarm LEDs
- Trouble LEDs
- Power LED
- System Trouble LED
- Silenced LED
- Full keypad
- Listings: UL and CSFM

### Accessories

- WLT (wire lead transformer)
- DCP dial-in programming modem
- Phone cords & jacks
- SNM (supervised notification module)

# NOTIFICATION APPLIANCES

## Remote Mini-Horn

MH Series



- Terminal/4-wire models
- Sound output 97dB
- Single gang plate
- 12-24 VDC and 120 VAC
- 15 mA current draw
- Listings: UL and ULC

## Remote Mini-Horn

HP-25 Series



- Terminal/4-wire models
- Sound output 97dB
- Single gang plate
- 12-24 VDC
- 15 mA current draw
- Temporal and non-temporal patterns
- Listings: UL and ULC

## Select-A-Horn

H-1224



- 33 sound output settings
- Horn or chime sound output
- Indoor/outdoor listed (with weatherproof back box)
- Pre-wire back plate
- Universal back plate mounting
- Listings: UL and cUL

## Select-A-Strobe/Horn®

SH-1224



- 12 VDC with 15, 35, or 60 cd setting
- 24 VDC with 15, 35, 60, 75, 95, or 110 cd setting
- 6 candela settings per device
- 33 sound output settings
- 15/75 ADA compliant on 60 cd setting
- Candela selection view window
- Pre-wire back plate
- Universal back plate mounting
- Listings: UL and cUL

## Select-A-Strobe/Horn®

SH24C-3075 I 10



- Selectable 30, 75, or 110 candela
- Low current draw
- 24 VDC input
- Terminal for easy wiring
- Tamper proof Select-A-Switch
- Designed for wall and ceiling mount
- Surface mount skirt RBX-I
- Universal adapter plate SPC-I
- Listings: UL, ULC, CSFM, and ADA

## Select-A-Strobe/Horn®

SH24C-177



- 177 candela model
- Low current draw
- Terminal for easy wiring
- Tamper proof Select-A-Switch
- Designed for wall and ceiling mount
- Sleeping Room Notification Compliant
- Surface mount skirt RBX-I
- Universal adapter plate SPC-I
- Listings: cUL, CSFM, and ADA

## Select-A-Strobe®

SL-1224



- 12 VDC with 15, 35, or 60 cd setting
- 24 VDC with 15, 35, 60, 75, 95, or 110 cd setting
- 6 candela settings per device
- 15/75 ADA compliant on 60 cd setting
- Candela selection view window
- Pre-wire back plate
- Universal back plate mounting
- Listings: UL and cUL

## Select-A-Strobe®

SL24C



- Selectable 30, 75, or 110 candela
- Low current draw
- Terminal for easy wiring
- Tamper proof Select-A-Switch
- Available 177 candela model
- Designed for wall and ceiling mount
- Sleeping Room Notification Compliant
- Surface mount skirt RBX-I
- Universal adapter plate SPC-I
- Listings: UL, ULC, CSFM, and ADA



# NOTIFICATION APPLIANCES



## Weatherproof Select-A-Strobe/Horn®

SH-120 Series

- 120VAC operation
- Low current draw
- 6 sound output settings
- Indoor and outdoor use
- Includes BBX-5 backbox
- Listings: UL and CSFM



## SASH Series

Select-A-Strobe/Horn®/Sign

- SASH-12/24 VDC
- SASH-120, 115 VAC
- 90dBA at 10 ft.
- Indoor and outdoor use
- Weatherproof backbox included with both models
- UL Listed Strobe/Horn

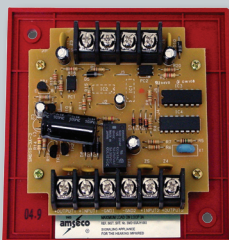


## Bells

PBA-AC & MBA-DC

- Red powder coating finish
- Sizes available: 6", 8", 10"
- Available voltage: 24 VAC, 120 VAC, 12 VDC, 24 VDC
- Service Use: fire alarm, general signal, burglar alarm
- Environment: -40° to 150°F, indoor or outdoor use (outdoor use requires weatherproof backbox BBK-1)
- 5-year warranty
- Listings: UL, ULC\*, CSFM, and MEA

\* MBA bells only



## Sync Modules

SMD10-3A

- Operates on 24 VDC 9mA
- 3 Amp max. output
- Mounts to a 4" square box
- Ability to Daisy Chain multiple devices
- Listings: UL, ULC, and CSFM

# CONVENTIONAL SMOKE & HEAT DETECTORS

## PS-24

### Photoelectric Smoke Detector



- Low profile 1.8"
- 2 or 4 wire base
- Sounder & relay base available
- 2 built-in power alarm LEDs
- With or without magnetic test (MRI Rooms)
- Vandal resistant locking feature
- Test feature
- Base not included
- Listings: UL, ULC, CSFM and FM

## IS-24

### Ionization Smoke Detector



- Low profile, 1.8"
- 2 or 4 wire base compatibility, relay bases available
- Highly stable operation, RF/Transient protection
- Two built-in power/alarm LEDs for 360° viewing
- Built-in magnetic detector sensitivity test feature
- Listings: UL, ULC, CSFM and FM

## BPS Series

### Baseless Smoke Residential



- 12 or 24VDC
- BPS-2, 2 wire baseless photo electric smoke
- BPS-4, 4 wire baseless photo electric smoke
- White or eggshell color
- With heat available
- Base not included
- Listings: UL, ULC, CSFM and FM

## PS-24H

### Photoelectric Smoke/Heat Detector



- 135°F self-restoring fixed temperature
- Low profile 1.8"
- Built-in power alarm LED
- Vandal resistant locking base
- Test feature
- Base not included
- Listings: UL, ULC, CSFM and FM

## Duct Detector & Sampling Tubes

### DSD Series



- Photoelectric DSD-P
- Powered by 115 VAC, 24 VAC or 24 VDC
- (2) 10A Form C alarm contacts
- Wide variety of remote accessories
- WP-1 enclosure provides outdoor installations against rain, sleet, and snow
- Listings: UL and CSFM



## Heat Detector

CR-135W  
CF-135W  
CR-200W  
CF-200W

- Available in 135°F and 200°F fixed temperature or with rate of rise
- Rate of rise responds to rise in temperature of approximately 15°F per minute
- Other models available upon request
- Listings: UL, ULC, CSFM and FM

- STS-2.5 duct sampling tube
- STS-5.0 duct sampling tube
- STS-10 duct sampling tube



## Fire Pull Station

P32-IT Series\*



- Single or dual contact
- Terminal connections
- Allen Key reset
- Standard single gang mounting
- 10 Amp snap action switch
- Optional auxiliary relay contacts
- High gloss red enamel finish
- Glass breakrod
- Surface back boxes available
- Listings: UL, ULC, ADA, CSFM and FM

\*Canadian Model: P32-ITS

## Dual Action

P32-IT-LP



- Single contact
- Allen Key reset
- Standard single gang mounting
- 10 Amp snap action switch
- Optional auxiliary relay contacts
- High gloss red enamel finish
- Glass breakrod
- Surface and weatherproof back boxes available
- Listings: UL, ULC, ADA, CSFM and FM



## Special Application

Pull Stations

- Colors available: Black, blue, green, grey, orange, purple, red, white or yellow
- Single or dual action
- Terminal connectors
- Glass breakrod
- 10 Amp snap action switch
- Mounts on standard single gang box
- Surface back boxes available
- Single or double contact
- Brass or chrome plating
- Custom labeling in any language
- Weatherproof and explosion proof models available
- Made in the U.S.A.
- Listings: UL, ULC, ADA, CSFM, FM and MEA

## Weatherproof

RMS-IT-WP

- Single or dual action
- Optional key reset
- Weatherproof back box included
- 10 Amp snap action switch
- Optional auxiliary relay contacts
- High gloss red enamel finish
- Glass breakrod
- Single or double contact
- Listings: UL, ULC, ADA, CSFM and FM

# ORDERING INFORMATION

## Flow Switches

Stock #	Model #	Description
I144402	VSR-2	Waterflow alarm switch for 2" pipe
I144425	VSR-2½	Waterflow alarm switch for 2 ½" pipe
I144403	VSR-3	Waterflow alarm switch for 3" pipe
I144435	VSR-3½	Waterflow alarm switch for 3 ½" pipe
I144404	VSR-4	Waterflow alarm switch for 4" pipe
I144405	VSR-5	Waterflow alarm switch for 5" pipe
I144406	VSR-6	Waterflow alarm switch for 6" pipe
I144408	VSR-8	Waterflow alarm switch for 8" pipe
I144410	VSR-10	Waterflow alarm switch for 10" pipe
I144440	VSR-S	Waterflow alarm switch for 1" thru 2" pipe
I144460	VSR-SG	Waterflow alarm switch with union for 1" thru 2" pipe
I144461	VSR-SG w/TSK	Waterflow alarm switch with union and tamper switch for 1" thru 2" pipe
I144465	VSR-ST	Waterflow alarm switch with threaded union for 1" thru 2" pipe
I144466	VSR-ST w/TSK	Waterflow alarm switch with threaded union and tamper switch for 1" thru 2" pipe
I144450	VSR-C-2	Waterflow alarm switch for 2" copper pipe
I144451	VSR-C-2½	Waterflow alarm switch for 2 ½" copper pipe
I144452	VSR-C-3	Waterflow alarm switch for 3" copper pipe
I144453	VSR-C-4	Waterflow alarm switch for 4" copper pipe
I029030		Replacement retard for waterflow alarm switch
I116002	VSR-FE2-2	Waterflow alarm switch with electronic retard for 2" pipe
I116025	VSR-FE2-2½	Waterflow alarm switch with electronic retard for 2 ½" pipe
I116003	VSR-FE2-3	Waterflow alarm switch with electronic retard for 3" pipe
I116035	VSR-FE2-3½	Waterflow alarm switch with electronic retard for 3 ½" pipe
I116004	VSR-FE2-4	Waterflow alarm switch with electronic retard for 4" pipe
I116005	VSR-FE2-5	Waterflow alarm switch with electronic retard for 5" pipe
I116006	VSR-FE2-6	Waterflow alarm switch with electronic retard for 6" pipe
I116008	VSR-FE2-8	Waterflow alarm switch with electronic retard for 8" pipe
I111100	VS-SP	Special application waterflow switch without retard
I116051	VSG-2½	Waterflow alarm switch for low flow 2 ½" (73 mm) pipe
I116052	VSG-2½	Waterflow alarm switch for low flow 2 ½" (76.1 mm) pipe
I010080	WFSR-F	Pressure activated waterflow alarm switch with retard
I119062	RD13-100-0	Residential riser without check valve for 1" pipe
I119067	RD13-100-1	Residential riser with check valve for 1" pipe
I119072	RD13-125-0	Residential riser without check valve for 1 ¼" pipe
I119077	RD13-125-1	Residential riser with check valve for 1 ¼" pipe
I119082	RD13-150-0	Residential riser without check valve for 1 ½" pipe
I119087	RD13-150-1	Residential riser with check valve for 1 ½" pipe
I119092	RD13-200-0	Residential riser without check valve for 2" pipe
I119097	RD13-200-1	Residential riser with check valve for 2" pipe

## Pressure Switches & Peripherals

Stock #	Model #	Description
I340103	PS10-1	Pressure type waterflow alarm and supervisory switch one contact
I340104	PS10-2	Pressure type waterflow alarm and supervisory switch two contacts
I340403	PS40-1	High/low pressure switch one contact
I340404	PS40-2	High/low pressure switch two contacts
I119100	PS40-TM	Completely pre-assembled low pressure test module
I341005	PS100-2	Pressure type waterflow alarm and supervisory switch two contacts
I341203	PS120-1	High/low pressure switch one contact
I341204	PS120-2	High/low pressure switch two contacts
I000018	BVL	Lever type bleeder valve
I370080	PCS	Pump control switch
I370010	ADPS-300-1B	Adjustable deadband pressure switch w/ brass connection
I370020	ADPS-300-1S	Adjustable deadband pressure switch w/ stainless steel connection
I370030	ADPS-300-2S	Adjustable deadband pressure switch w/ stainless steel connection
I370040	ADPS-600-1B	Adjustable deadband pressure switch w/ brass connection
I370050	ADPS-600-1S	Adjustable deadband pressure switch w/ stainless steel connection
I370060	ADPS-600-2S	Adjustable deadband pressure switch w/ stainless steel connection



## Tamper & Supervisory Switches

Stock #	Model #	Description
1010201	PTS-C	Plug type supervisory switch
1010117	WLS	Tank water level switch
1010108	RTS-O	Room temperature switch normally open
1010109	RTS-C	Room temperature switch normally closed
1010040	TTS-S	Tank temperature switch for steel tank
1010041	TTS-W	Tank temperature switch for wood tank
1010106	OSYSU-1	Oustide screw & yoke valve supervisory switch one contact
1010206	OSYSU-2	Oustide screw & yoke valve supervisory switch two contacts
1010107	PCVS-1	Control valve supervisory switch one contact
1010207	PCVS-2	Control valve supervisory switch two contacts
1000040	RBVS	Retrofit ball valve switch
1000035	RBVS-T	Retrofit ball valve switch with tamper switch
1010118	WCS-1/2	Water column switch 1/2"
1010119	WCS-3/4	Water column switch 3/4"

## Corrosion Solutions

Stock #	Model #	Description
1119172	BAC-PAK	Do-it-yourself test kit for most common water bacteria
1119176	Iron Kit	Dissolved iron water test kit
1119178	WTK	Water test kit
1119174	Sludge Kit	5 year deposit sludge test kit
1119546	PCMS-RM	Corrosion monitoring station riser mount
0090180	PCMPK-1	Corrosion monitoring probe kit riser mount & dry pipe models
0090181	PCMPK-2	Corrosion monitoring probe kit older style ceiling mount models
1030001	PAAR-B	Automatic air release
1119730	PAV	Air vent
1119105		5 gal Pipe-Shield™ corrosion inhibitor
1119115		15 gal Pipe-Shield™ corrosion inhibitor
1119155		55 gal Pipe-Shield™ corrosion inhibitor
1119275		275 gal Pipe-Shield™ corrosion inhibitor
1119920	PCIS-B	Portable chemical injection system
1119700	PCDS-B	Chemical delivery system
1119726	CDP-500	Corrosion dry pak single phase 120V
1119727	CDP-500	Corrosion dry pak single phase 208V
1119728	CDP-500	Corrosion dry pak single phase 230V
1119730	CDP-500	Corrosion dry pak three phase 208V
1119731	CDP-500	Corrosion dry pak three phase 230V
1119732	CDP-500	Corrosion dry pak three phase 460V
1119733	CDP-500	Corrosion dry pak three phase 575V
1119735	CDP-1000	Corrosion dry pak three phase 208V
1119736	CDP-1000	Corrosion dry pak three phase 230V
1119737	CDP-1000	Corrosion dry pak three phase 460V
1119738	CDP-1000	Corrosion dry pak three phase 575V
1119740	CDP-2000	Corrosion dry pak three phase 208V
1119741	CDP-2000	Corrosion dry pak three phase 230V
1119742	CDP-2000	Corrosion dry pak three phase 460V
1119743	CDP-2000	Corrosion dry pak three phase 575V
1119757	NGP 200-1A	8.6A @ 115 VAC, Single Phase Compressor
1119758	NGP 200-2A	4.1A @ 208 VAC, Single Phase Compressor
1119759	NGP 200-3A	4.3A @ 230 VAC, Single Phase Compressor
1119760	NGP 415-2A	9.9A @ 208 VAC, Single Phase Compressor
1119761	NGP 415-3A	9.6A @ 230 VAC, Single Phase Compressor
1119762	NGP 415-2B	5.4A @ 208 VAC, Three Phase Compressor
1119763	NGP 415-3B	5.4A @ 230 VAC, Three Phase Compressor
1119764	NGP 415-4B	2.7A @ 460 VAC, Three Phase Compressor
1119788	NGP SOLO-1A	21A @ 115 VAC, Single Phase Compressor
1119789	NGP SOLO-2A	11.3A @ 208 VAC, Single Phase Compressor
1119790	NGP SOLO-3A	10.5A @ 230 VAC, Single Phase Compressor
1119765	NGP 750-2A	11.3A @ 208 VAC, Single Phase Compressor
1119766	NGP 750-3A	10.5A @ 230 VAC, Single Phase Compressor
1119767	NGP 750-2B	6.2A @ 208 VAC, Three Phase Compressor



# ORDERING INFORMATION

## Corrosion Solutions Cont'd

1119768	NGP 750-3B	5.8A @ 230 VAC, Three Phase Compressor
1119769	NGP 750-4B	2.9A @ 460 VAC, Three Phase Compressor
1119770	NGP 1150-2A	14A @ 208 VAC, Single Phase Compressor
1119771	NGP 1150-3A	12.6A @ 230 VAC, Single Phase Compressor
1119772	NGP 1150-2B	10A @ 208 VAC, Three Phase Compressor
1119773	NGP 1150-3B	9.8A @ 230 VAC, Three Phase Compressor
1119774	NGP 1150-4B	4.9A @ 460 VAC, Three Phase Compressor
1119775	NGP 2500-2B	16.6A @ 208 VAC, Three Phase Compressor
1119776	NGP 2500-3B	15A @ 230 VAC, Three Phase Compressor
1119777	NGP 2500-4B	7.5A @ 460 VAC, Three Phase Compressor
1119778	NGP 2500H-2B	16.6A @ 208 VAC, Three Phase Compressor
1119779	NGP 2500H-3B	15A @ 230 VAC, Three Phase Compressor
1119780	NGP 2500H-4B	7.5A @ 460 VAC, Three Phase Compressor
1119781	NGP 3100-2B	29A @ 208 VAC, Three Phase Compressor
1119782	NGP 3100-3B	26.5A @ 230 VAC, Three Phase Compressor
1119783	NGP 3100-4B	13.5A @ 460 VAC, Three Phase Compressor

## Explosion Proof Devices

Stock #	Model #	Description
1010092	PIVSU-EX	Explosion proof post indicator valve switch
1010077	OSYSU-EX	Explosion proof OS & Y switch
1350102	PS10-EX	Explosion proof pressure switch 4-20 PSI
1350402	PS40-EX	Explosion proof pressure switch 10-175 PSI
1113202	VSRF-EX-2	Explosion proof vane type waterflow switch 2"
1113225	VSRF-EX-2 1/2	Explosion proof vane type waterflow switch 2 1/2"
1113203	VSRF-EX-3	Explosion proof vane type waterflow switch 3"
1113235	VSRF-EX-3 1/2	Explosion proof vane type waterflow switch 3 1/2"
1113204	VSRF-EX-4	Explosion proof vane type waterflow switch 4"
1113205	VSRF-EX-5	Explosion proof vane type waterflow switch 5"
1113206	VSRF-EX-6	Explosion proof vane type waterflow switch 6"
1113208	VSRF-EX-8	Explosion proof vane type waterflow switch 8"
1430501	FSEX-24PMR	Explosion proof strobe
1430500	FHEX-24SMR	Explosion proof horn
1430510	YL6	Explosion proof horn/strobe
1000400	RMS-6T-EXP-WP	Explosion & weather proof pull station

## Releasing Panel

Stock #	Model #	Description
3006142	PFC-4410RC	Water or agent extinguishing panel
3006461	PFC-6075R	75 Point Addressable Releasing Panel
3006462	RA-6075R	LCD Remote Releasing Annunciator
3001000	Abort Switch	Abort Switch
3001002	RCDS-1	Releasing Circuit Disable Switch
3004726	ARM-1	Auxiliary Relay Module
3004725	ARM-2	Auxiliary Relay Module
3006221	ARM-44	8 From C Relay Board f/PFC-4410RC
3006400	RA-4410RC	Remote Annunciator
5130080	BT6-4	Battery 6V, 4AH
5130092	BT-40	Battery 12V, 4AH
5130084	BT-80	Battery 12V, 8AH
5130090	BT-120	Battery 12V, 12AH
5130086	BT-180	Battery 12V, 18AH
5130097	BT-260	Battery 12V, 26AH

## Digital Communicator

Stock #	Model #	Description
3003004	PFC-7501	Sprinkler monitoring panel
1000316	RA-7630	LCD annunciator
3003002	RA-7692	LED annunciator

## Notification Appliances

Stock #	Model #	Description
4560041	MH-12/24R	Remote mini horn 12/24V red
4560042	MH-12/24W	Remote mini horn 12/24V white

## Notification Appliances Cont'd

Stock #	Model #	Description
4560043	MH-12/24TR	Remote mini-horn terminal 12/24V red
4560044	MH-12/24TW	Remote mini-horn terminal 12/24V white
1610224	MH-120R	Remote mini-horn 120V red
1610225	MH-120W	Remote mini-horn 120V white
4550014	HP-25TR	Remote mini-horn terminal 12/24V red
4550015	HP-25TW	Remote mini-horn terminal 12/24V white
4560050	H-1224R	Select-A-Horn red
4560051	H-1224W	Select-A-Horn white
4560070	SH-1224R	Select-A-Strobe/Horn® 12/24V red
4560071	SH-1224W	Select-A-Strobe/Horn® 12/24V white
4570003	SH24C-3075I10R	Select-A-Strobe/Horn® 24V red
4570004	SH24C-3075I10W	Select-A-Strobe/Horn® 24V white
4570001	SH24C-177R	Select-A-Strobe/Horn® 24V red
4570002	SH24C-177W	Select-A-Strobe/Horn® 24V white
4560060	SL-1224R	Select-A-Strobe® 12/24V red
4560061	SL-1224W	Select-A-Strobe® 12/24V white
4570007	SL24C-3075I10R	Select-A-Strobe® 24V red
4570008	SL24C3075I10W	Select-A-Strobe® 24V white
4570005	SL24C-177R	Select-A-Strobe® 24V red
4570006	SL24C-177W	Select-A-Strobe® 24V white
1000755	SASH-24	Select-A-Strobe/Horn®/Sign 12/24V
1000760	SASH-120	Select-A-Strobe/Horn®/Sign 120V
1750070	MBA-126	Bell 6" 12VDC red
1750080	MBA-128	Bell 8" 12VDC red
1750060	MBA-12010	Bell 10" 12VDC red
1750100	MBA-246	Bell 6" 24VDC red
1750110	MBA-248	Bell 8" 24VDC red
1750090	MBA-2410	Bell 10" 24VDC red
1806024	PBA-246	Bell 6" 24VAC red
1808024	PBA-248	Bell 8" 24VAC red
1810024	PBA-2410	Bell 10" 24VAC red
1806120	PBA-1206	Bell 6" 120VAC red
1808120	PBA-1208	Bell 8" 120VAC red
1810120	PBA-12010	Bell 10" 120VAC red
4670017	SMD10-3A	Sync module

## Conventional Smoke & Heat Detectors

Stock #	Model #	Description
1430011	PS-24	Photoelectric smoke detector
1430010	IS-24	Ionization smoke detector
1430006	BPS-2	Baseless smoke detector residential 2 wire eggshell
1430026	BPS-2W	Baseless smoke detector residential 2 wire white
1430007	BPS-4	Baseless smoke detector residential 4 wire eggshell
1430029	BPS-4W	Baseless smoke detector residential 4 wire white
1430012	PS-24H	Photoelectric smoke/heat detector
1000140	CR-135W	Heat detector 135° rate-of-rise
1000142	CF-135W	Heat detector 135° fixed temperature
1000141	CR-200W	Heat detector 200° fixed temperature/rate-of-rise
1000143	CF-200W	Heat detector 200° fixed temperature
1430009	DSD-P	Photoelectric duct detector
1000266	STS-2.5	Duct sampling tube 2 ½ ft.
1000468	STS-5.0	Duct sampling tube 5 ft.
1000263	STS-10	Duct sampling tube 10 ft.

## Pull Stations & Accessories

Stock #	Model #	Description
1000447	P32-1T	Pull station single action
1000476	P32-1T-LP	Pull station dual action
1000401	RMS-1T-WP	Pull station weather proof

## RESIDENTIAL WATERFLOW SWITCH APPLICATIONS



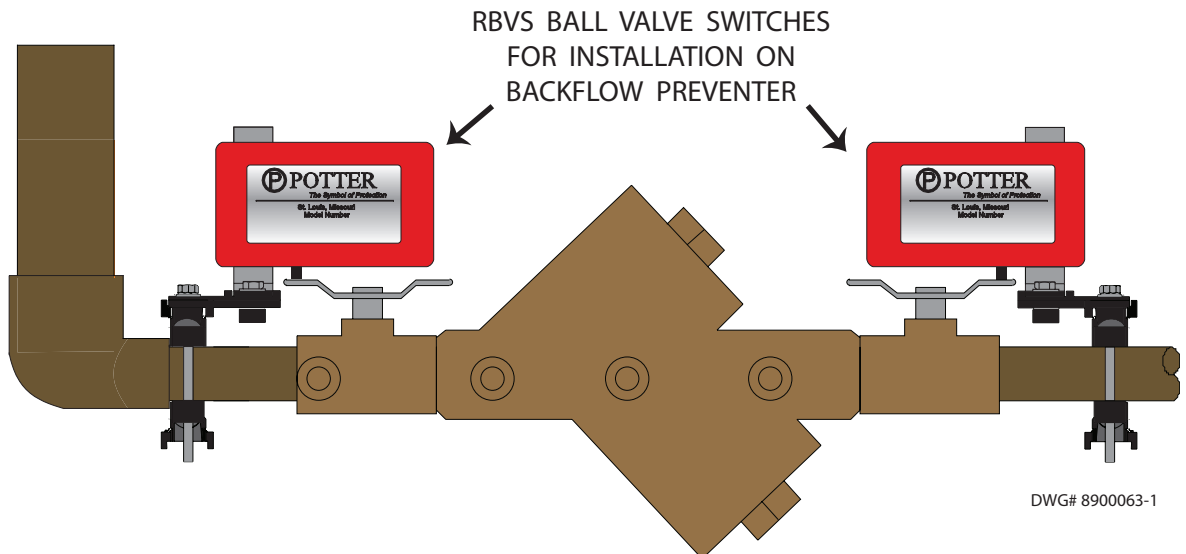
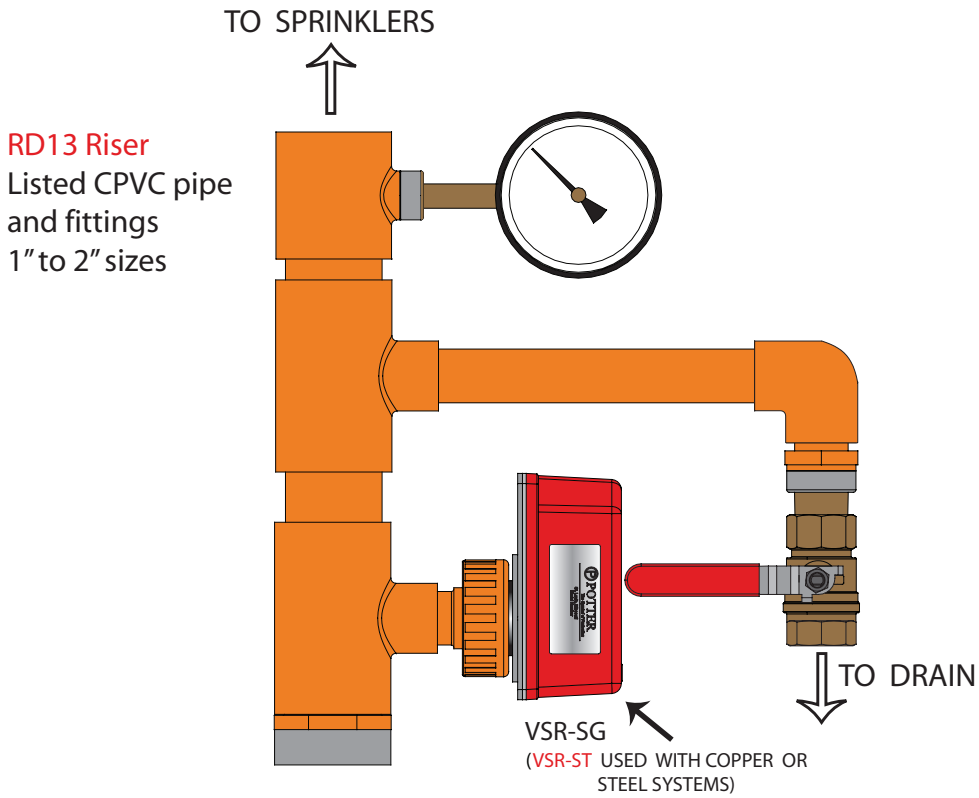
SASH-24/120V



PBA-AC SERIES  
MBA-DC SERIES

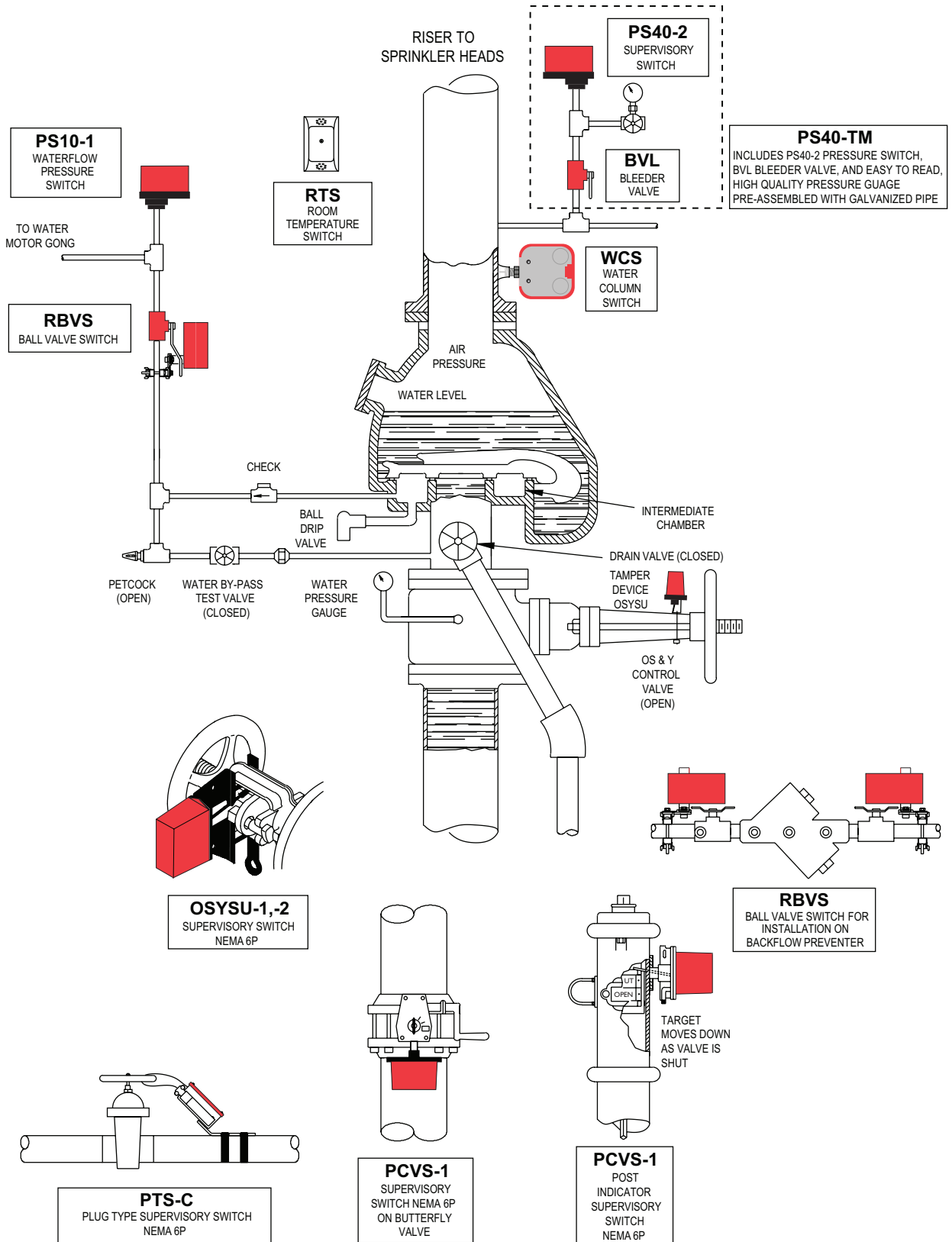


SH-1224 SERIES



DWG# 8900063-1

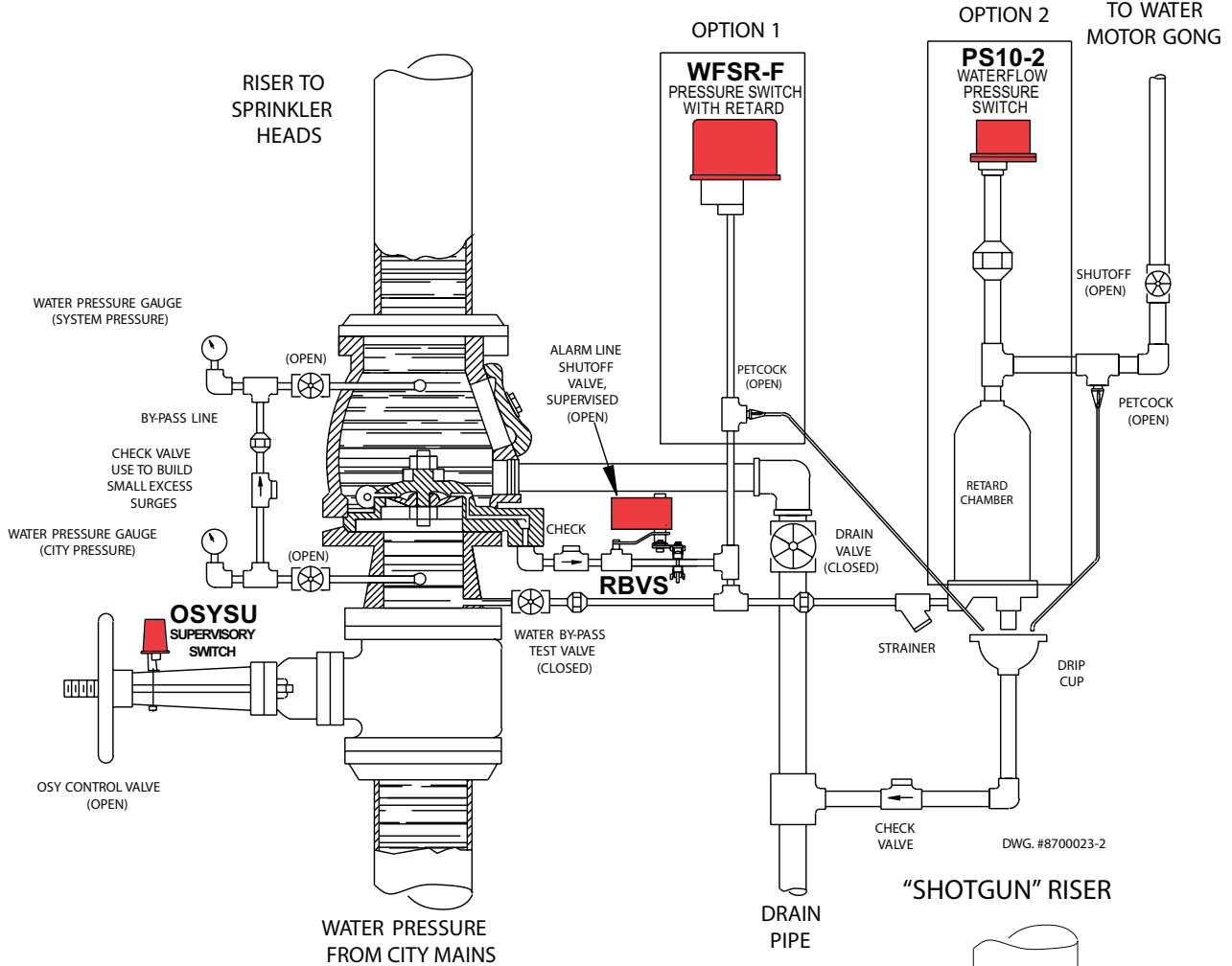
## DRY PIPE VALVE SYSTEM WATERFLOW ALARM INSTALLATION



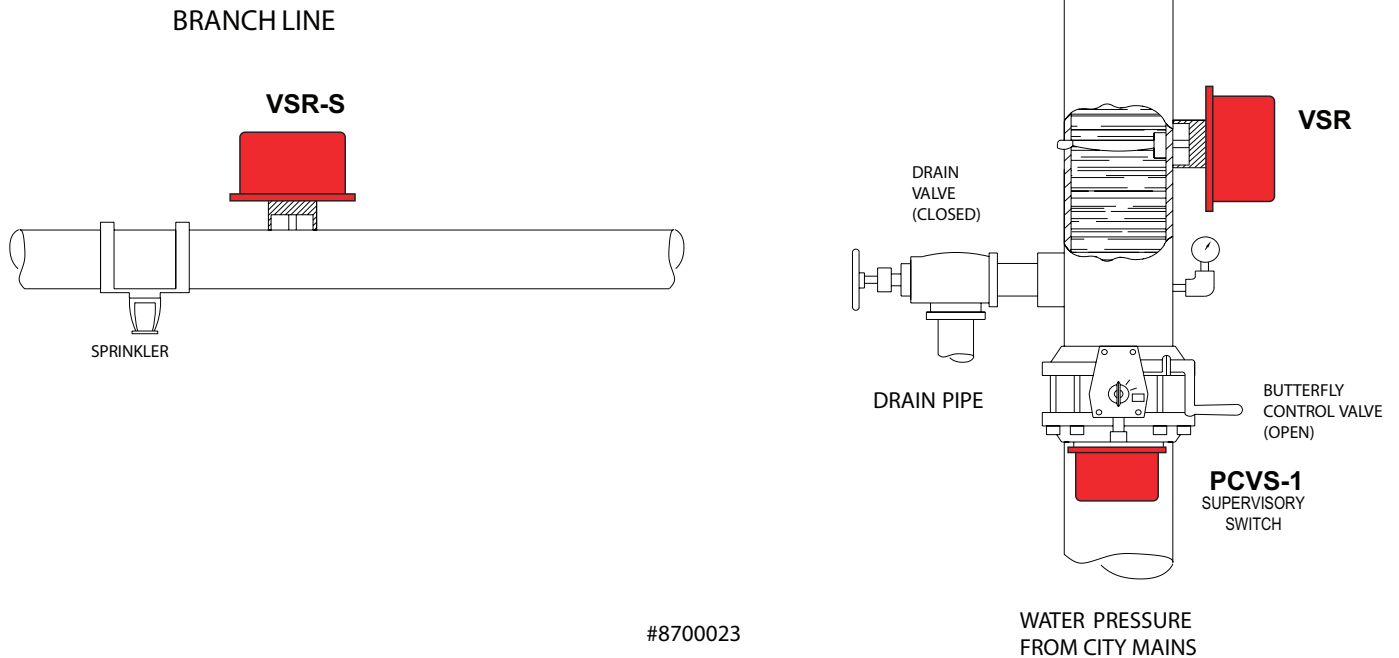
#8700021

## WET PIPE SPRINKLER SYSTEMS

### ALARM CHECKVALVE



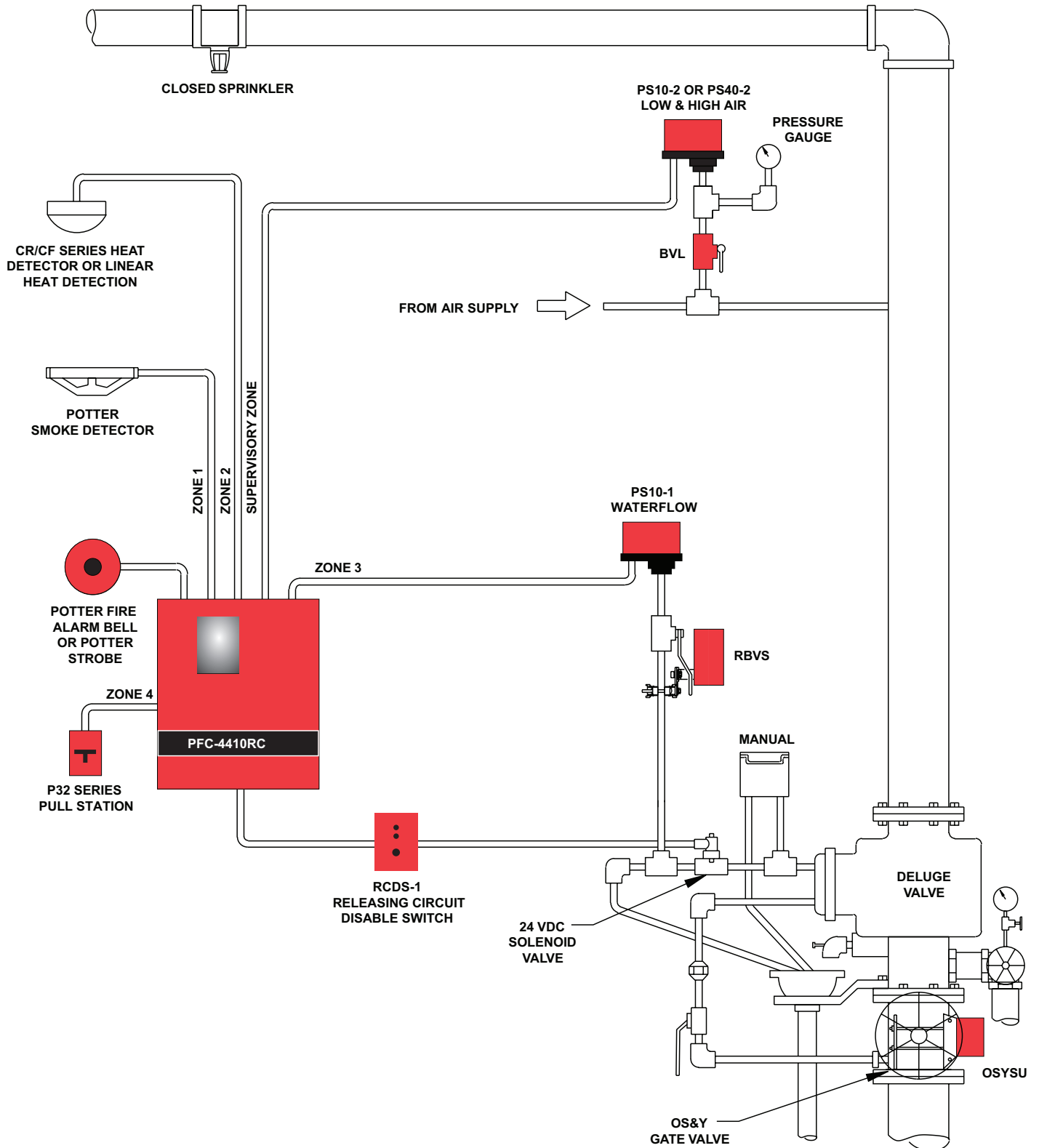
### "SHOTGUN" RISER



#8700023



**PRE-ACTION DELUGE SYSTEM  
SINGLE ZONE/ELECTRIC CROSS ZONE**





## At Potter Electric Signal Company, LLC

**QUALITY** is the first order of business. Since 1898, we have served the Security and Fire Sprinkler industries on a world-wide basis. Today, we manufacture a full line of Sprinkler Monitoring Devices, Fire Alarm Panels, Releasing Control Panels, Vault, Safe, & Security Systems and Peripherals.

We strive to provide you with the finest products and technical support in the industry. You will also receive prompt service from a dedicated team of professionals. After all, you, the customer, are the most important member of that team. So give us a call.

866.572.3005 

314.595.6900 • Fax 800.768.8377

[www.pottersignal.com](http://www.pottersignal.com)

 Canada: 888.882.1833      Fax: 416.741.1822  
Asia/Pacific: 65.9682.8998      Fax: 65.6481.2902