

AX-8MV

**DESCRIPTION:**

The AX-8MV Master Station is the centerpiece of the AX Integrated Audio & Video Security system.

Each AX-8MV master station can initiate and answer calls from up to 7 additional master stations and up to 8 door or sub stations. The master can be expanded with AX-16SW add-on selectors for a maximum capacity of 120 door / sub stations. Its streamline design is mountable on a wall or desk.

When a video door station calls, a tremolo tone rings and the 3.5" color monitor comes on, displaying the image from the door station location. To answer the call, simply press the TALK button once and speak hands-free, or Press and Hold the TALK button to use as push-to-talk, release-to-listen. If access control is included, simply press the "key" button and the associated electric strike or magnetic lock will be activated.

Each master station connects via CAT-5e cable homerun to the AX Central Exchange Unit. Feature and operation variables are set with the system set-up software and uploaded to the CEU.

White version is available, model AX-8MV-W.

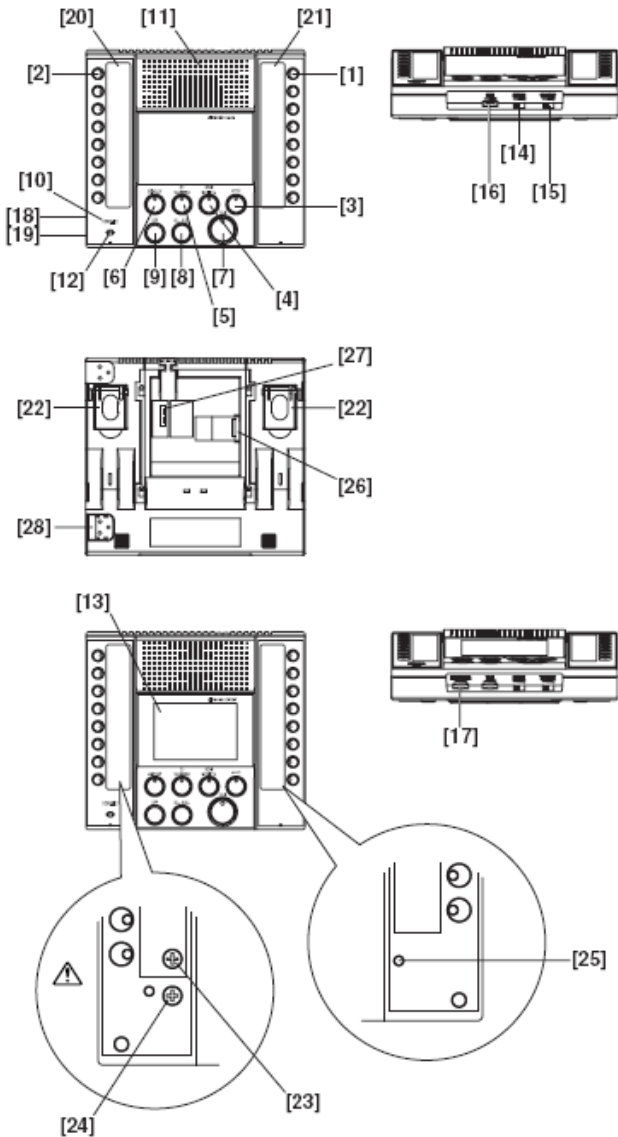
FEATURES:

- 3.5" TFT color video monitor
- 8 master station channels
- 8 door / sub station channels
- LED and call tone annunciation for programmable length or infinite call-in
- Hands-free VOX communication or Push-to-Talk
- All Call to other master stations
- Selective calling to any station in the system
- Add-on selectors in increments of 16 channels for max. capacity of 120 door / sub stations (CEU capacity also req'd)
- Privacy prevents other masters from listening in
- CO Transfer allows calls to transfer to a telephone number (Viking K-1900-5 required)
- Scan Monitor allows listening to door / sub stations in programmed time increments
- Door release button activates door strike or magnetic lock (selectable N/O or N/C contacts from CEU)
- 3.5mm speaker & mic jacks for computer-style headset or handset connection
- Tone and volume adjustments for open voice and headset communication
- Brightness and contrast adjustments for video
- Option connector for video output, call extension, or footswitch operation of TALK function

AX-8MV

Audio Video Master Station for AX Series

FEATURE CALL-OUTS:



AX-8MV with optional desk stand:
Model MCW-S/A (adjustable to 45° or 60° angle)



FEATURE CALL-OUT DEFINITIONS:

- [1] Door station selector button w/LED
- [2] Master station selector button w/LED
- [3] Door release button
- [4] Scan monitor button w/LED
- [5] CO transfer button w/LED
- [6] Privacy button w/LED
- [7] TALK button w/LED
- [8] ALL CALL button
- [9] OFF button (standby)
- [10] Occupied LED
- [11] Speaker
- [12] Microphone
- [13] 3.5 inch color LCD monitor
- [14] Receive volume control switch (low, med, high)
- [15] Transmit volume control switch (low, med, high)
- [16] Tone volume control
- [17] LCD brightness control
- [18] Headset receiver jack
- [19] Headset microphone jack
- [20] Master station directory card / card cover
- [21] Door station directory card / card cover
- [22] Desktop stand
- [23] Headset receiver volume control
- [24] Headset microphone volume control
- [25] Reset switch
- [26] RJ45 jack for wiring to CEU
- [27] Optional connector input
- [28] Connector for AX-16SW add-on selector

SPECIFICATIONS:

- Power Source: 24V DC Supplied from CEU
- Call Tone: Tremolo ring tone & blinking LED
- Communication: Open voice hands-free (VOX or Push-to-Talk)
- Video Monitor: 3-1/2" direct view TFT color LCD
- Scanning Lines: 525 lines
- Video Output: NTSC Standard 1Vpp (0.7-1.4Vpp)
- Headset Jack: 3.5mm mic and speaker jacks
- Calling Capacity: Up to 7 additional master stations
Up to 120 door / sub stations
- Mounting: Desk with flip-up stands, or wall mount with provided metal bracket
- Wall mount box: 2-gang electrical box or ring
- Wiring: CAT-5e homerun to CEU
- Wiring Connection: RJ45 jack
- Housing: ABS Resin
- Color: Black
- Operating Temp: 32 – 104° F (0 ~ 40° C)
- Dimensions (HxWxD): 6-7/8" x 7-5/8" x 1-7/8"
(175 x 194 x 48 mm)
- Weight: 1.21 lbs (550g)