

## AXIS Entry Manager

Easy-to-install access management solution powered by IP.



- > Ease of installation
- > Built-in web software
- > PoE support
- > Plenum-rated
- > Support most reader types
- > Scalable and future-proof

AXIS Entry Manager is an easy-to-install and scalable IP-based access management solution for small- to mid-sized businesses such as offices, industries and retail stores. AXIS Entry Manager consists of one or several AXIS A1001 Network Door Controllers with built-in access management software. The system is completed with standard IT equipment, readers, door locks and door position sensors that meet the installation requirements.

The system can be managed from any computer on the network. The built-in web-based software includes a wizard for effective hardware configuration and easy cardholders and system management.

AXIS Entry Manager is a fully distributed solution where all data is stored in the controllers – investment and maintenance of a central unit or server is not needed. Data is automatically synchronized between all AXIS A1001 Network Door Controllers in the system, which will continue its normal operation and buffer events locally even if there is a network failure.

The controller supports most reader types, providing maximum flexibility. The use of Power over Ethernet reduces the need for separate power cables to door accessories and proprietary data cables. The plenum-rated controller is designed for wall and ceiling mount.

AXIS Entry Manager is a scalable and future-proof solution that meets the requirements for most basic access management needs, but the door controller, as well as the network equipment, can be reused if a larger or more complex solution is requested.

# Installation has never been easier

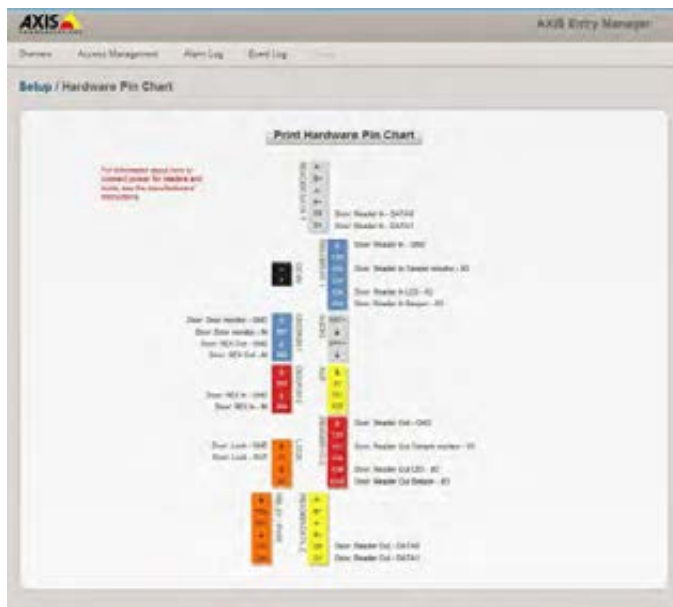
## Designed for quick and easy installation

AXIS A1001 is designed for effective installation. The color-coded connectors for additional equipment such as door locks, readers and door position sensors simplifies cable connection and help to avoid installation mistakes. For flexible mounting the unit is designed for ceiling and wall mount. The PoE support will reduce the need for separate power cables and power supplies to door accessories. The unit is fitted with DIN clips for easy mounting in a separate cabinet.



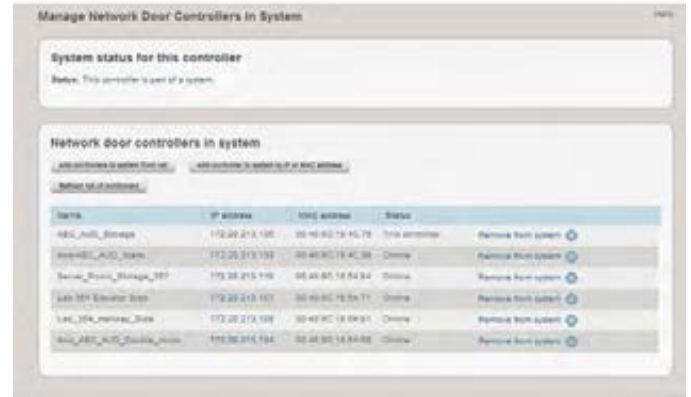
## Automatic unit discovery and configuration wizard

When the hardware installation at the door is ready and the unit is connected to the network, it can automatically be discovered from a connected computer. The configuration wizard in AXIS Entry Manager helps users to complete the installation and verify that the additional equipment is connected properly. The wizard allows for remote verification eliminating the need for assistance at each door to verify that the system is working properly.



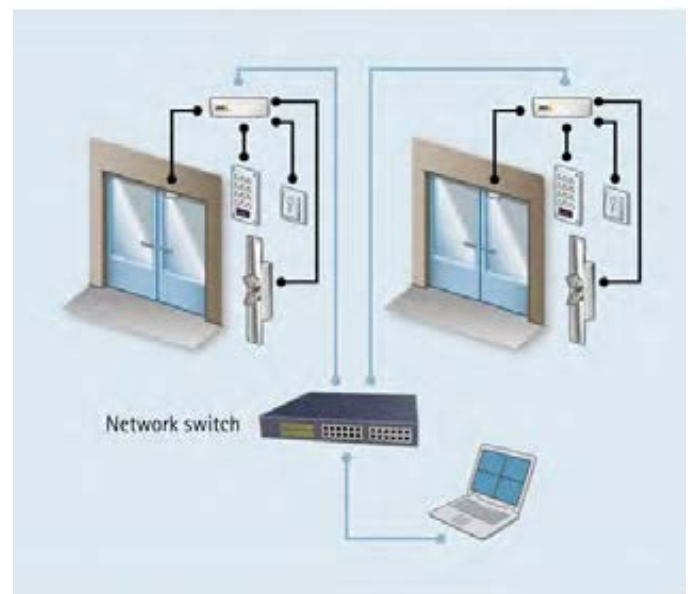
## Easy to add controllers to the system

AXIS Entry Manager makes it easy to add new controllers as the system grows. User credentials and schedules will automatically be shared when a new unit is connected.



## Flexible and scalable system configuration

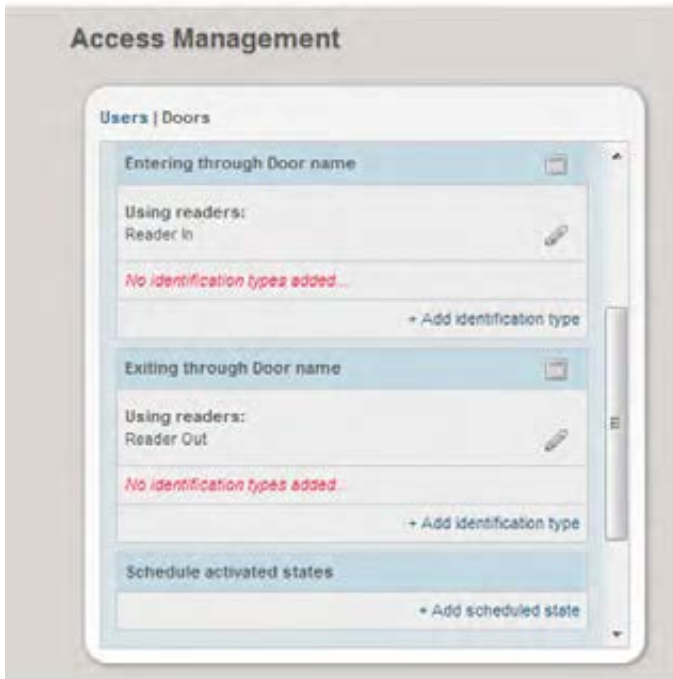
AXIS Entry Manager meets the basic needs for efficient access management of entrances and doors between departments with support for up to 33 controllers. The PoE supported controller is placed at each door. One controller could support two adjacent doors with two connected readers. For system redundancy the door controller has support for external power as well as Uninterruptible Power Supply (UPS). System management is made from any computer in the network.



# Access management has never been easier

## Ease-of-use in focus

AXIS Entry Manager user interface is developed with a focus on ease-of-use and intuitive handling, with navigation tools that provide quick access to controllers in the system. To facilitate configuration and administration the system will guide you by providing instant feed-back about missing data.



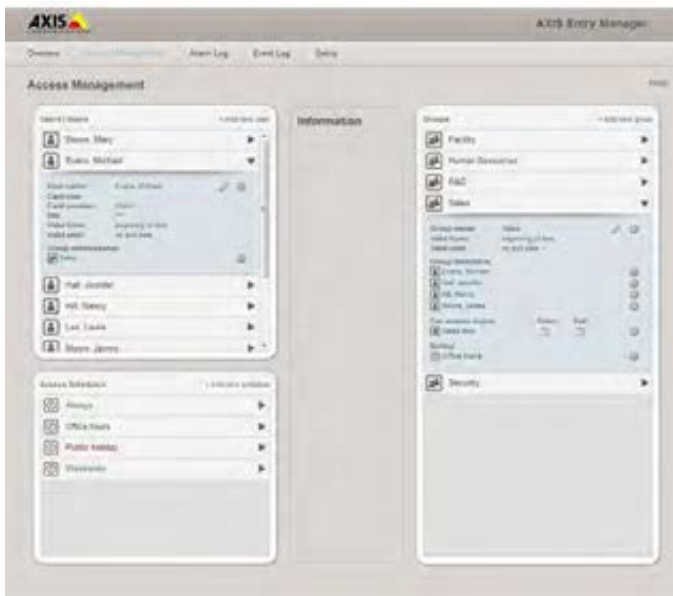
## Effective schedule handling

With AXIS Entry Manager you can easily get an overview and verify specific access schedules depending on a user's role in the organization as well as specific schedules for holidays and weekends.



## User friendly access management

AXIS Entry Manager provides the possibility to create schedules and groups to meet your specific needs. Users are easily added and are assigned the right access level by a simple drag- and-drop operation.



## Technical Specifications – AXIS Entry Manager

<b>Models</b>	AXIS A1001 Network Door Controller with built-in web-based software	<b>Administration</b>	Drag-and-drop operation with flexible assignment of doors and user groups, Retrieve credentials from reader, Manual access/lock/unlock, Import of users
<b>Door controller</b>		<b>General</b>	
<b>Readers</b>	Up to 2 readers per controller (Wiegand, RS485 (OSDP)) with supported card formats	<b>Casing</b>	Plastic
<b>Controllers</b>	1–33 <sup>a</sup>	<b>Software</b>	Configuration and basic access control management through Internet Explorer, Firefox, Chrome, or Safari
<b>Credentials</b>	Up to 400	<b>Memory</b>	256 MB RAM, 4 Gbit Flash
<b>Event history</b>	30 000 First In, First Out (FIFO) per controller	<b>Power</b>	<b>Power in:</b> 10–30 V DC, max 26 W or Power over Ethernet IEEE 802.3af/802.3 at Type 1 Class 3 <b>Power out &amp; relay:</b> 1x 12 V DC, max 500 mA 1x solid state relay 30 V DC, max 700 mA <b>Power out lock:</b> 2x 12 V DC, max 500 mA <sup>a</sup>
<b>Digital I/O</b>		<b>Connectors</b>	RJ45 10BASE-T/100BASE-TX Terminal blocks: DC power, 10 Inputs/Outputs, RS485/Wiegand, Relay, Cable size for connectors: CSA: AWG 28–16, CUL/UL: AWG 30–14
<b>I/O interface</b>	<b>Reader I/O:</b> DC output: 2x 12 V DC output max 300 mA; 2x 4 configurable inputs/outputs, (Digital input: 0 to max 40 V DC, Digital output: 0 to max 40 V DC, Open drain, max 100 mA) <b>Reader data:</b> RS485 full duplex, RS485 half duplex, Wiegand <b>Auxiliary:</b> 1x 3.3 V DC output, max 100 mA 2x configurable inputs/output (Digital input: 0 to max 40 V DC, Digital output: 0 to max 40 V DC, Open drain, max 100 mA) <b>Door connectors:</b> 2x 2 input for door monitors and REX (Digital input: 0 to max 40 V DC)	<b>Operating conditions</b>	0 °C to 50 °C (32 °F to 122 °F) Humidity 20–85% RH (non-condensing)
<b>I/O functionality</b>	Pre-configured for readers and door monitors, Input trigger, Output toggle/pulse	<b>Approvals</b>	EN 55022 Class B, EN 50130-4, EN 61000-3-2, EN 61000-3-3, EN 55024, EN 61000-6-1, EN 61000-6-2, FCC Part 15 Subpart B Class B, ICES-003 Class B, C-tick AS/NZS CISPR22 Class B, VCCI Class B, IEC/EN/UL 60950-1, UL 294, UL 2043, EN 50581
<b>Network</b>		<b>Dimensions</b>	45.5 x 180 x 180 mm (1.8 x 7.1 x 7.1 in)
<b>Security</b>	Password protection, IP address filtering, HTTPS <sup>b</sup> encryption, IEEE 802.1X network access control, Digest authentication, User access log	<b>Weight</b>	500 g (1.1 lb)
<b>Supported protocols</b>	IPv4, HTTP, HTTPS <sup>b</sup> , SSL/TLS <sup>b</sup> , QoS layer 3 DiffServ, FTP, SMTP, Bonjour, UPnP <sup>TM</sup> , SNMPv1/v2c/v3 (MIB-II), DNS, DynDNS, NTP, RTSP, RTP, TCP, UDP, IGMP, RTCP, ICMP, DHCP, ARP, SOCKS	<b>Included accessories</b>	Connector kit, Cable ties, Installation Guide
<b>Events &amp; alarms</b>		<b>Optional accessories</b>	AXIS T8120 Midspan 15 W, AXIS T8128 PoE Splitter 24 V (requires 30 W midspan), AXIS T8129 PoE Extender Mains adaptor 24 V DC, AXIS T98A15-VE Surveillance Cabinet
<b>Tamper detection</b>	Removal of unit cover/tamper front Removal of unit from wall/tamper back, Reader tamper	<b>Warranty</b>	Axis 3-year warranty and AXIS Extended Warranty option, see <a href="http://www.axis.com/warranty">www.axis.com/warranty</a>
<b>Event log</b>	Configurable by time and topic, Alarm acknowledgement	a. The number of controllers in the system is power consumption dependent; max load per controller for readers and other equipment is 7.5 W with PoE and 14 W with 10–30 V DC b. This product includes software developed by the OpenSSL Project for use in the OpenSSL Toolkit ( <a href="http://www.openssl.org/">http://www.openssl.org/</a> ), and cryptographic software written by Eric Young ( <a href="mailto:ey@cryptsoft.com">ey@cryptsoft.com</a> ).	
<b>Event actions</b>	Notification via email, HTTP and TCP, External output port Status LED	<b>More information is available at <a href="http://www.axis.com">www.axis.com</a></b>	
<b>Event triggers</b>	Tamper detection, Power loss, Network lost, Configuration, Door, Event logger, Hardware, Input signal, Schedule, System, Time		
<b>System features</b>			
<b>Access schedules</b>	Unlimited		
<b>Installation &amp; Configuration</b>	Configuration wizard, Configuration verification, Color-coded connectors, I/O assignment print-out, Automatic controller discovery, Instant feedback of missing configuration data		

### Dimensions and connectors

#### I/O interface

1. Reader data

2. Reader I/O

3. Door

4. Auxiliary

#### External power inputs

5. Power (10–30 V DC)

6. Network (PoE)

#### Power outputs

7. Power lock

8. Power & relay

