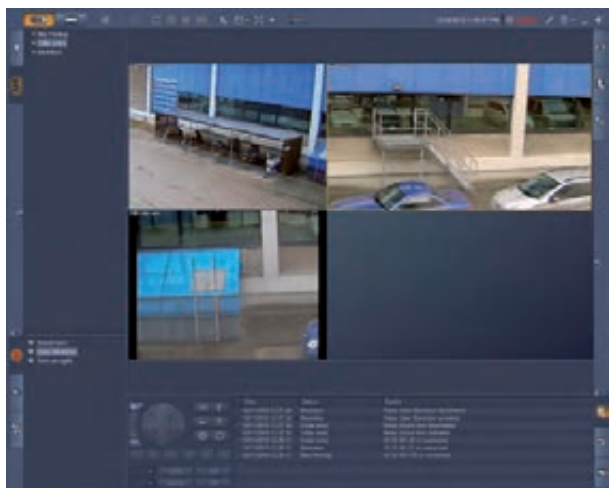


Video Client

www.boschsecurity.com



BOSCH
Invented for life



- ▶ Live viewing of multiple cameras
- ▶ Local recording and snapshots
- ▶ PTZ control and digital zoom
- ▶ Playback and export from storage
- ▶ Motion and forensic search

Video Client is a Windows PC application for live viewing and playback of network-connected cameras. The software package consists of a live viewing and playback application, and a configuration manager. The Configuration Manager software allows the settings for supported devices to be configured. In addition Video Client allows a direct connection to any Bosch device, so no local configuration is needed. A stand-alone player will allow archive playback and authentication without any other workstation software. A set-up wizard is included with the package to help with the installation of the system. The Video Client software is optimized for use in small-to-medium size CCTV installations. For a better overview and individual organization devices can be grouped in folders or remote sites.

System overview

Viewing live cameras

The Video Client main monitor allows a mix of up to 20 HD or SD cameras to be viewed at the same time. Multiple cameras can be dragged and displayed in predefined quick scratch views. Sets of favorite views showing a logical composition of camera images can

be defined and named by each user. These favorite views are easily accessible and allow one-click display of related camera images in a user-defined layout. A second monitor on the Video Client workstation can be used as a spot monitor. Favorite views and sequences can be assigned to this second monitor. Live camera streams can be displayed on a monitor wall built with SD or HD decoders. The layout of the wall is easily configured with a graphical interface. Alarm and relay status information is displayed on the live page. Connected relays can be activated or deactivated with a mouse-click.

A single click in a cameo records live video images from a camera locally. Up to two cameras can be recorded at the same time on the workstation. Still snapshots of a camera video image can also be exported locally. The instant playback function enables one-click replay of the previous minute of the active camera's video.

Text data from ATM/POS devices can be shown next to the live video stream.

Camera with PTZ capability can be manipulated by dragging the mouse in the cameo or by using the PTZ control console. Live mode and playback mode can be

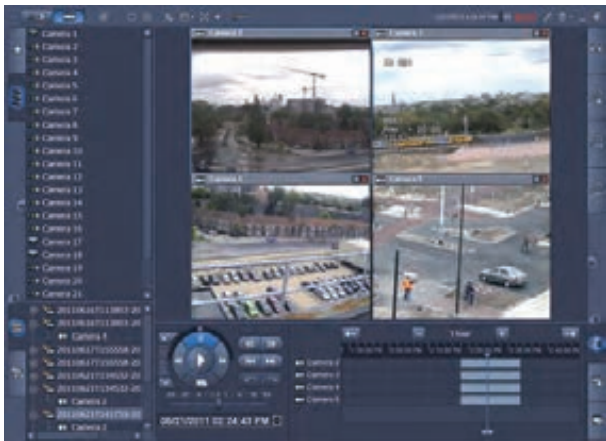
controlled using the IntuiKey keyboard. If a selected camera has an audio stream, it can be played via the sound facilities of the PC.

Playback and export of recorded video

The playback window is optimized to replay and export recorded video and audio of four cameras simultaneously. The recording sources include our recording solutions and workstation local recording, as well as exported files.

A timeline panel shows recordings and events ordered in time. It facilitates the pinpointing of recordings at a particular time. Selected time periods of video and audio on the timeline can be easily exported.

Four cameras can be selected for export in either a native or Windows-compatible export format. Video export is a background task so allowing other tasks to be continued without interruption. Still snapshots of a recorded camera video image can also be exported locally.



The replay shuttle console gives easy control of forward and reverse playback at low or high speed, scratching and trick play of up to four recording sources simultaneously.

A stand-alone player allows playback of exported video material without requiring software installation.

Searching

The event search task panel helps define search criteria for motion or alarm recordings.

The IVA search task panel provides access to the highly advanced forensic search facilities, unique to Bosch CCTV products. In this task panel the user can define complex searches, like the number of people entering a door, or finding all video fragments with a person in a red coat, or detecting people using an escalator in the wrong direction, or signaling left luggage.

Advanced configuration for optimized results

The advanced features available in our cameras can be configured using the Configuration Manager software, allowing you to obtain optimized results from each device.

Functions

Live view

- Camera list (all IP camera and encoder devices) with camera connection, motion detection status, and filter for quick camera access
- User-specified favorite views list with camera connection and motion detection status
- Alarm and relay list with status
- Relay activation and deactivation
- Standard multi-screen grids displaying live camera images with local recording, motion indication, digital zoom and PTZ control
- User-specified multi-screen grids displaying live camera images with local recording, motion indication, digital zoom and PTZ control
- Toolbar with:
 - Live and Playback switching
 - User-specific preferences (with monitor wall layout)
 - Multi-screen grid selection (1, 2X2, 3X3 and 4X4)
 - Decoration mode selection
 - Window / full-screen toggle
 - Sequencing selection
 - Audio and volume control
 - Configuration manager shortcut
 - Log-off and help
- Task panels for snapshots (BMP, JPG or PNG format), favorite view design, and instant playback
- PTZ camera control console
- Log and export task status panels
- Display of live camera streams on decoders and monitor wall
- Object auto-tracking with a single in-cameo click for auto-tracking domes
- IntuiKey operation of all major live view functions
- Easy selection of desired stream or transcoder (if available)

Playback view

- Camera list (all IP cameras and encoder devices)
- Playback window for 1 or 2x2 cameras with in-window digital zoom
- Playback shuttle control console with trick mode replay and video scratching
- Timeline display of up to four cameras simultaneously with calendar and time range search function, and export selection
- Replay of exported recordings and snapshots from lists
- Task panels for snapshots (BMP, JPG or PNG format), instant playback, motion search and IVA search
- Search results panel with direct replay
- IntuiKey operation of all major playback functions
- Easy selection of transcoder (if available)

Configuration Manager

- Detailed configuration of all supported devices

Installation/configuration notes

With Video Client you have two options for monitoring:

- Connect directly to a single Bosch device without the need of a configuration tool.

- Set up a monitoring system with various devices using the configuration wizard.

The wizard is an easy and convenient way to configure Video Client with IP cameras and on-camera storage or VRM Video Recording Manager.

The wizard helps set up:

- Recording and recording schedule
- Multiple users and user rights for the various system functions
- List of cameras that Video Client can view and operate
- Camera network addresses
- System time
- List of alarms and relays visible in Video Client

Once the system is running, settings can be changed using the Configuration Manager application.

Licensing

Video Client supports up to 16 IP cameras or encoder channels free of charge. The number of cameras/channels can be increased to 128 by purchasing additional licenses.

Archiving and playback of IP cameras licensed on one of our recording solutions, like VRM Video Recording Manager, is free of charge.

For cameras connected to the DIVAR family, Video Client is always free of charge and do not require additional licenses. However, more than 256 cameras connected simultaneously are not recommended.

Technical specifications

Supported devices

All IP cameras, IP encoder devices and recording solutions supported by VideoSDK 5.71 as well as devices of the DIVAR family are supported.

System requirements

Minimum PC requirements	
Operating system	Windows XP (with SP3), Windows 7 (32 and 64 bit), Windows 8 (32 and 64 bit)
Graphic software	DirectX 9.0C March 2009 update
Processor	Intel Pentium Dual Core 3.0 GHz or comparable
RAM	4 GB or more
Free disk space	10 GB
Graphics card	NVIDIA GeForce 8600 or better
Network interface	100/1000 BaseT

Ordering information

Video Client 1-camera license

Add-on license for Video Client, 1 IP camera
Order number **BVC-ESIP01A**

Video Client 8-camera license

Add-on license for Video Client, 8 IP cameras
Order number **BVC-ESIP08A**

Video Client 16-camera license

Add-on license for Video Client, 16 IP cameras
Order number **BVC-ESIP16A**

Video Client 32-camera license

Add-on license for Video Client, 32 IP cameras
Order number **BVC-ESIP32A**

Video Client 48-camera license

Add-on license for Video Client, 48 IP cameras
Order number **BVC-ESIP48A**

Video Client 64-camera license

Add-on license for Video Client, 64 IP cameras
Order number **BVC-ESIP64A**

Video Client 80-camera license

Add-on license for Video Client, 80 IP cameras
Order number **BVC-ESIP80A**

Video Client 96-camera license

Add-on license for Video Client, 96 IP cameras
Order number **BVC-ESIP96A**

Video Client 112-camera license

Add-on license for Video Client, 112 IP cameras
Order number **BVC-ESIP112A**

Accessories

KBD-Universal Keyboard

IntuiKey universal keyboard for system control and programming. Multi-lingual; quick-select menu; Allegiant RS-485 and Allegiant RS-232 protocol; simultaneous connection via Allegiant switcher
Order number **KBD-UNIVERSAL**

Represented by:

Americas:

Bosch Security Systems, Inc.
130 Perinton Parkway
Fairport, New York, 14450, USA
Phone: +1 800 289 0096
Fax: +1 585 223 9180
security.sales@us.bosch.com
www.boschsecurity.us

Europe, Middle East, Africa:

Bosch Security Systems B.V.
P.O. Box 80002
5617 BA Eindhoven, The Netherlands
Phone: + 31 40 2577 284
Fax: +31 40 2577 330
emea.securitysystems@bosch.com
www.boschsecurity.com

Asia-Pacific:

Robert Bosch (SEA) Pte Ltd, Security
Systems
11 Bishan Street 21
Singapore 573943
Phone: +65 6571 2808
Fax: +65 6571 2699
apr.securitysystems@bosch.com
www.boschsecurity.asia

China:

Bosch (Shanghai) Security Systems Ltd.
201 Building, No. 333 Fuquan Road
North IBP
Changning District, Shanghai
200335 China
Phone +86 21 22181111
Fax: +86 21 22182398
www.boschsecurity.com.cn

America Latina:

Robert Bosch Ltda Security Systems Division
Via Anhanguera, Km 98
CEP 13065-900
Campinas, Sao Paulo, Brazil
Phone: +55 19 2103 2860
Fax: +55 19 2103 2862
latam.boschsecurity@bosch.com
www.boschsecurity.com