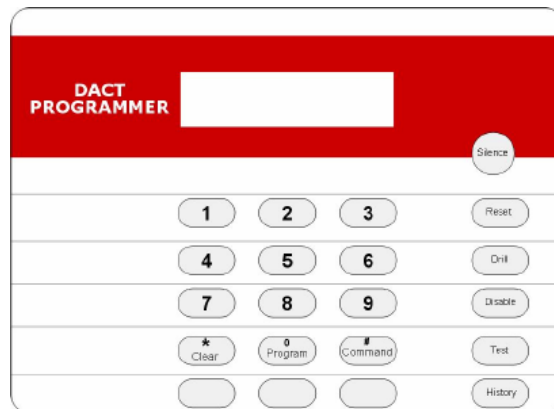


# FMR-DACT-KEYPAD



**EN** | Operation Instructions  
DACT Keypad  
Programmer



**BOSCH**

## Notices



Follow these instructions to avoid personal injury and damage to the equipment.

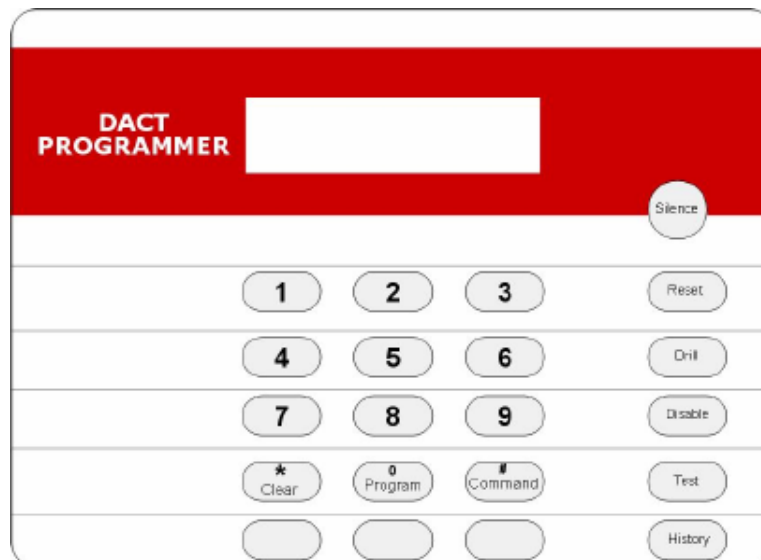


Install, test, and maintain the FMR-DACT-KEYPAD according to these instructions, NFPA 72, local codes, and the Authority Having Jurisdiction (AHJ). Bosch is not responsible for improperly installed, tested, or maintained devices.

## 1.0 Description

The FMR-DACT-KEYPAD (*Figure 1*) is a four-wire alphanumeric liquid crystal display (LCD) keypad used as a programming device for the DS9602, D9068, and FPT-DACT Fire Communicators.

**Figure 1: FMR-DACT-KEYPAD**



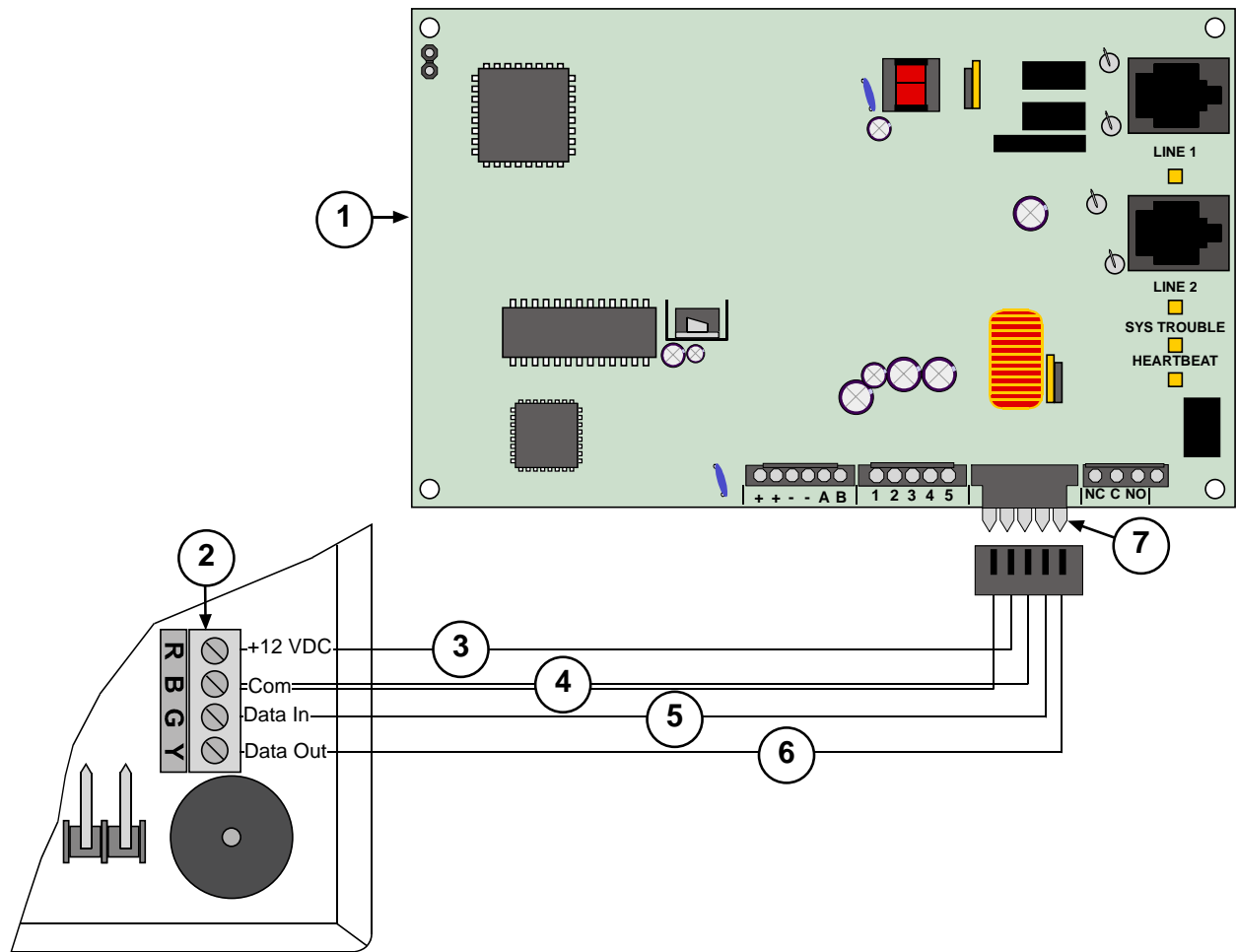
## 2.0 Wiring



Ensure all wiring is de-energized before routing.

1. Route the wiring from the DACT to the FMR-DACT-KEYPAD.
2. Pull the base wiring through the wire entrance in the FMR-DACT-KEYPAD base.
3. Connect the wiring to the FMR-DACT-KEYPAD terminal strip as shown in *Figure 2*.
4. Place the FMR-DACT-KEYPAD on its base.
5. While feeding the excess wiring out of the back of the base, press straight down on the cover until it latches on.

**Figure 2: Wiring the FMR-DACT-KEYPAD Terminal Strip**



1 - DACT Fire Communicator

2 - FMR-DACT-KEYPAD Terminal Strip

3 - +12 VDC (red wire)

4 - Common (black wire)

5 - Data in (green wire)

6 - Data out (yellow wire)

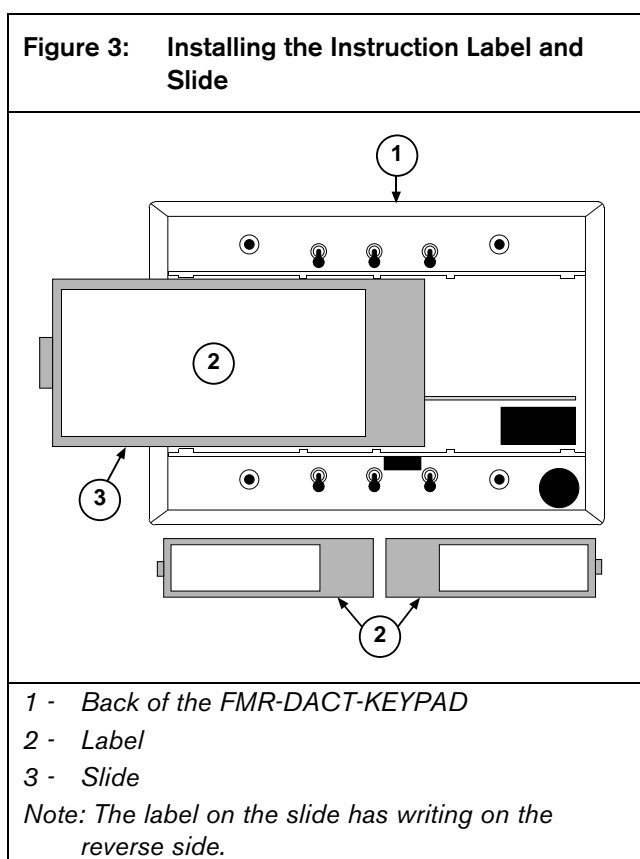
7 - Keypad terminals

### 3.0 Power Up

The power supplied to the FMR-DACT-KEYPAD from the DACT is 12 VDC with a maximum draw of 100 mA.

### 4.0 Installing the Instruction Label and Slide

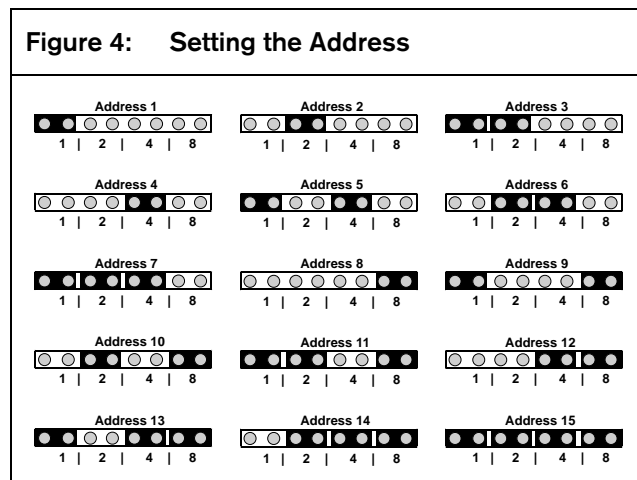
1. Place the instruction label (*Item 2 in Figure 3*) on the pullout slide (*Item 3 in Figure 3*), positioning it as close to the pull tab as possible.
2. Install the slide so you can pull from the left or right from the back of the base.



### 5.0 Setting the Address

The FMR-DACT-KEYPAD must have an address set within its address pins.

Select the address, 1 to 15, by placing the shorting jumpers over the address pins as shown in *Figure 4*.



## 6.0 Operating the Keypad



While installing the FMR-DACT-KEYPAD, the system does not monitor the input points.

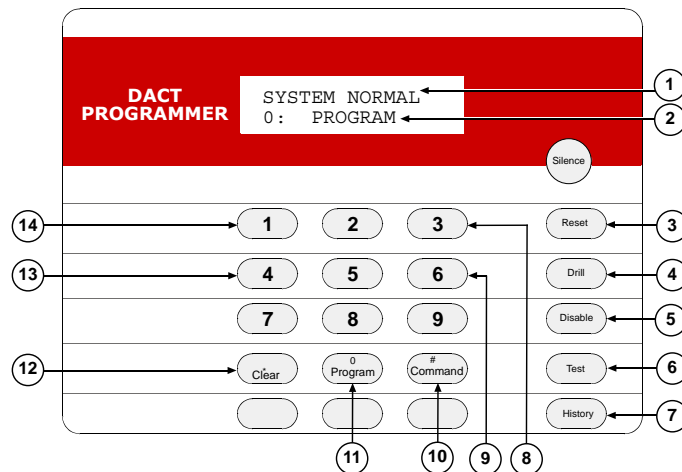
### 6.1 FMR-DACT-KEYPAD

The FMR-DACT-KEYPAD (Figure 5) is an alphanumeric LCD keypad used for programming

and debugging only while it is connected to the DACT. This keypad has a two-line, 16-character display showing information on various DACT programming functions. In most cases, the first line contains general system status information; the second line describes the specific programming menus and prompts.

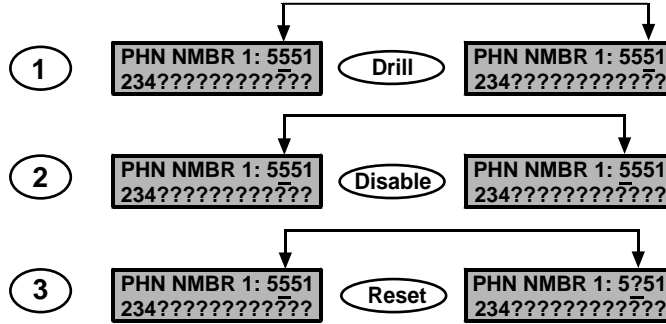
Figure 6 on page 6 identifies and describes the FMR-DACT-KEYPAD keys.

Figure 5: FMR-DACT KEYPAD



- 1 - First line of display.
- 2 - Second line of display.
- 3 - [Reset] key: Initiates a manual reset of the DACT. Clears the character selected by the cursor. Refer to Figure 6 on page 6 For more information, refer to the D9068 (P/N: 45386), DS9602 (P/N: 45387) and FPT-DACT Operation & Installation Guide (P/N: F01U002505).
- 4 - [Drill] key: Advances to the next programmable feature or character position (Figure 6).
- 5 - [Disable] key: Returns to the previous programmable feature or character position (Figure 6).
- 6 - [Test] key: Enters Test Mode. Pressing [Test] when entering a telephone number accesses three telephone control code options. Refer to the D9068 (P/N: 45386), DS9602 (P/N: 45387), or FPT-DACT Operation & Installation Guide (P/N: F01U002505)
- 7 - [History] key: Enters History Mode. Refer to the D9068 (P/N: 45386), DS9602 (P/N: 45387), or FPT-DACT Operation & Installation Guide (P/N: F01U002505).
- 8 - [3] key: Increases the FMR-DACT-KEYPAD backlight intensity. Press and hold [\* Clear] first. Then press [3] to adjust the intensity.
- 9 - [6] key: Decreases the FMR-DACT-KEYPAD backlight intensity. Press and hold [\* Clear] first, then press [6] to adjust the intensity.
- 10 - [# Command] key: Accepts programming entries into FPT-DACT. Press this key after every programming entry.
- 11 - [0 Program] key: Enters the Programming Mode menu. Refer to the D9068 (P/N: 45386), DS9602 (P/N: 45387), or FPT-DACT Operation & Installation Guide (P/N: F01U002505) for programming instructions.
- 12 - [\* Clear] key: Cancels any programming menu without making changes. Return to the message SYSTEM NORMAL by pressing [\* Clear] until SYSTEM NORMAL appears across the first line.
- 13 - [4] key: Decreases FMR-DACT-KEYPAD sounder volume. Press and hold [\* Clear] first, then press [4] to adjust the volume.
- 14 - [1] key: Increases FMR-DACT-KEYPAD sounder volume. Press and hold [\* Clear] first, then press [1] to adjust the volume.

**Figure 6: Additional Functions of the [Drill], [Disable], and [Reset] Keys**



- 1 - Press [Drill] to move the cursor to the next position
- 2 - Press [Disable] to move the cursor back one position
- 3 - Press [Reset] to clear the character that is currently selected

## 7.0 Programming the FPT-DACT with the FMR-DACT-KEYPAD



Only use the FMR-DACT-KEYPAD to program and debug.

1. Program the DS9602, D9068, and FPT-DACT according to the *D9068* (P/N: 45386), *DS9602* (P/N: 45387), or *FPT-DACT Operation and Installation Guide* (P/N: F01U002505).
2. If there is no FMR-DACT-KEYPAD activity for 3 min, it disables. The FMR-DACT-KEYPAD buzzer sounds and a System Fault message appears.
3. Disconnect the FMR-DACT-KEYPAD from the DACT as described in the *D9068* (P/N: 45386), *DS9602* (P/N: 45387), or *FPT-DACT Operation and Installation Guide* (P/N: F01U002505).

## 8.0 Troubleshooting

**Table 1: Troubleshooting**

FMR-DACT-KEYPAD Status	Cause	Corrective Action
The sounder is heard continuously and a System Fault message appears.	<ul style="list-style-type: none"> <li>• The yellow and green ground wires are disconnected.</li> <li>• The FMR-DACT-KEYPAD was not correctly programmed at the DACT.</li> <li>• The DACT malfunctioned.</li> </ul>	Replace the DS9602, D9068, or FPT-DACT.
The FMR-DACT-KEYPAD does not respond to input.	The address is not set.	Set the address.
Three-beep error tone sounds at all FMR-DACT-KEYPADs.	An incorrect key was pressed.	Press the correct key.

## 9.0 Specifications

Table 2: Specifications	
<b>Nominal Supply Voltage</b>	12 VDC
<b>Standby Current</b>	100 mA; 75 mA for battery calculation
<b>Alarm Current</b>	100 mA; 75 mA for battery calculation
<b>Operating Temperature</b>	+32°F to +120°F (0°C to +49°C)
<b>Relative Humidity</b>	5% to 85%, non-condensing (+86°F, +30°C)
<b>Dimensions (H x W x D)</b>	5 in. x 6 in x 1 in. (12 cm x 16 cm x 3 cm)
<b>Listings and Approvals</b>	UL864, California State Fire Marshall (CSFM)
<b>Environmental</b>	Use indoor, dry

Bosch Security Systems, Inc.  
130 Perinton Parkway  
Fairport, NY 14450-9199  
Customer Service: (800) 289-0096  
Technical Support: (888) 886-6189

© 2006 Bosch Security Systems, Inc.  
F01U002307C



Recyclable



**BOSCH**