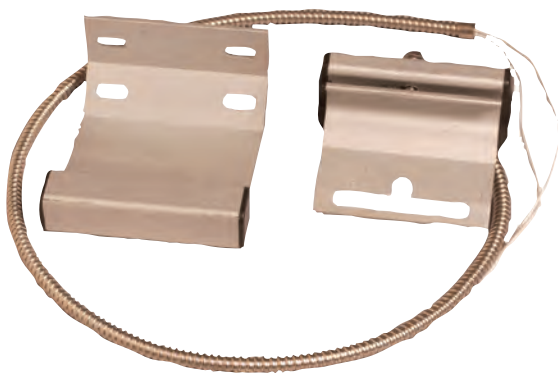


ISN-C66 Track Mounted Overhead Door Contact

www.boschsecurity.com



BOSCH
Invented for life



- ▶ Closed loop
- ▶ Mounts on door tracks
- ▶ Sturdy and solid
- ▶ Four-way magnet bracket
- ▶ Installs better and faster than standard overhead contacts

The contact is available in a metal finish. It has a wider gap for reduced false alarms and a four-way adjustable magnet bracket. It includes an armored cable. Use for mounting on door tracks.

Certifications and approvals

UL and

Region	Certification
Europe	CE 73/23/EEC and 93/68/EEC, EN50131: 1997, EN50131-6: 1997, EN60950: 2000, EN60335-1: 1994 +A1: 1996 Annex B

Installation/configuration notes

Compatibility Information

All contact models are compatible with control panel models that accept contact inputs.

Parts included

Quantity Per Package	Component
1	Assembly (contact and bracket)
1	Magnet

Technical specifications

Gap Width:	44.45 mm (1.75 in.)
Contact Assembly and Bracket Dimensions:	76.2 mm x 66 mm x 45.8 mm (3.07 in x 2.60 in. x 1.80 in.)
Cable Length:	46 cm (18 in.)
Switch Configuration Type:	Single pole single throw (SPST)
Maximum Contact Resistance:	150 $\mu\Omega$ (micro-ohm)
Minimum Breakdown Voltage:	250 VDC
Insulation Resistance:	$10^{10} \Omega$
Electrostatic Cap:	0.3 PF
Contact Capacity:	10 VAC
Maximum Conductive Current:	1.0 A
Maximum Voltage:	100 V
Operating Temperature Range:	-40° C to 60° C (-40°F to -140°F)

Package Information

ATTENTION! Each package contains one assembly with contact, bracket, and one magnet.

Ordering information

ISN-C66 Track Mounted Overhead Door Contact

Package contains one assembly with contact, bracket, and one magnet.

Order number **ISN-C66**

Represented by:

Americas:

Bosch Security Systems, Inc.
130 Perinton Parkway
Fairport, New York, 14450, USA
Phone: +1 800 289 0096
Fax: +1 585 223 9180
security.sales@us.bosch.com
www.boschsecurity.us

Europe, Middle East, Africa:

Bosch Security Systems B.V.
P.O. Box 80002
5617 BA Eindhoven, The Netherlands
Phone: + 31 40 2577 284
Fax: +31 40 2577 330
emea.securitysystems@bosch.com
www.boschsecurity.com

Asia-Pacific:

Robert Bosch (SEA) Pte Ltd, Security Systems
11 Bishan Street 21
Singapore 573943
Phone: +65 6571 2808
Fax: +65 6571 2699
apr.securitysystems@bosch.com
www.boschsecurity.asia

China:

Bosch (Shanghai) Security Systems Ltd.
201 Building, No. 333 Fuquan Road
North IBP
Changning District, Shanghai
200335 China
Phone +86 21 22181111
Fax: +86 21 22182398
www.boschsecurity.com.cn

America Latina:

Robert Bosch Ltda Security Systems Division
Via Anhanguera, Km 98
CEP 13065-900
Campinas, Sao Paulo, Brazil
Phone: +55 19 2103 2860
Fax: +55 19 2103 2862
latam.boschsecurity@bosch.com
www.boschsecurity.com