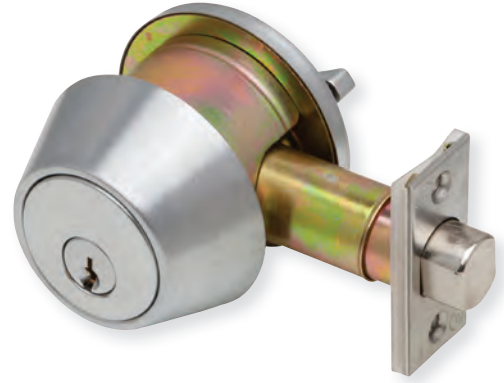


DB2000 Series

Grade 2 deadbolts



Specifications

- Grade 2, UL listed 3-hour
- 1 3/8" – 1 3/4" Conventional cylinder door range; 1 5/8" - 2" SFIC door range
- All functions include 2 3/8" - 2 3/4" universal square corner latch (30-253) and 1 1/8" x 2 3/4" square corner lipless strike
- Accommodates Schlage conventional 6-pin (keyed 6) in Schlage C keyway, keyed different and SFIC cylinders

How to order

Product number		Trim		Keying	
1	2	3	4		
Series	Function	Finish	Cylinder		
DB2000	-	605	KDC	-	

Grade 2 deadbolts		Trim	Keying
Series	Functions	Finishes	Cylinders
DB2000	SCT Single cylinder x thumbturn	605	KDC = Conventional 6-pin, Schlage C, KD SFIC = Less SFIC
	DCT Double cylinder	613 626	

Finishes



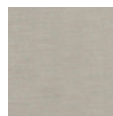
605



613



626



630*

* Available Q1 2020

Accessories

Tailpieces

Product description	Function	Finish	Cylinder
DB2000-TP-SFIC	SFIC Tailpiece kit including fork for G2 DB	N/A	N/A
DB2000-TP	SFIC Tailpiece for G2 DB	N/A	N/A