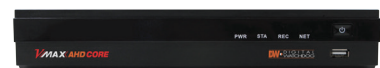


VMAX AHD CORE™

4 CH	8 CH	16 CH
DW-VAC42T	DW-VAC82T	DW-VAC162T
DW-VAC43T	DW-VAC83T	DW-VAC163T
DW-VAC44T	DW-VAC84T	DW-VAC164T
DW-VAC46T	DW-VAC86T	DW-VAC166T



4 CH and 8 CH Models



16 CH Model

Username: **admin** Password: **no password**

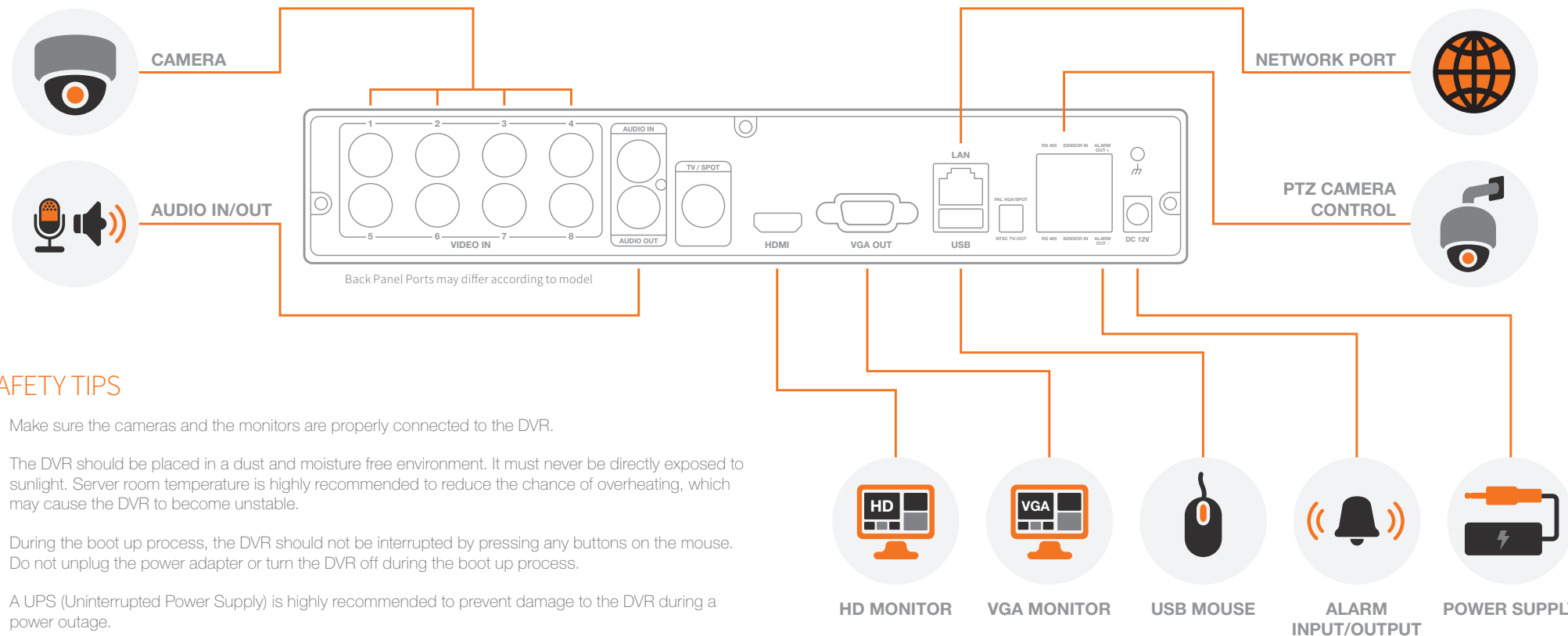
WHAT'S IN THE BOX

CD (QSG + Manual) & Quick Start Guide		1 Set	12V DC and Power Cable		1 Set
IR Remote Control		1 Set	Terminal Block and Rubber Mount		1 Pair (2 Pieces) 1 Set
USB Mouse		1 Set			

Attention: This document is intended to serve as a quick reference page for initial set-up. It is recommended that the user read the entire instruction manual for complete and proper DVR usage.

Step 1 – CONNECTING THE DVR

1. Mount and install all necessary cameras and external devices. Refer to their individual manuals for additional information.
2. Place the DVR in its final position. See installation tips below.
3. Connect all necessary cables to the DVR
4. Once all additional devices have been properly connected to the DVR, connect the DVR to an appropriate power supply. The DVR will boot up automatically.

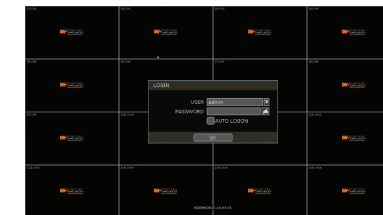


SAFETY TIPS

1. Make sure the cameras and the monitors are properly connected to the DVR.
2. The DVR should be placed in a dust and moisture free environment. It must never be directly exposed to sunlight. Server room temperature is highly recommended to reduce the chance of overheating, which may cause the DVR to become unstable.
3. During the boot up process, the DVR should not be interrupted by pressing any buttons on the mouse. Do not unplug the power adapter or turn the DVR off during the boot up process.
4. A UPS (Uninterrupted Power Supply) is highly recommended to prevent damage to the DVR during a power outage.

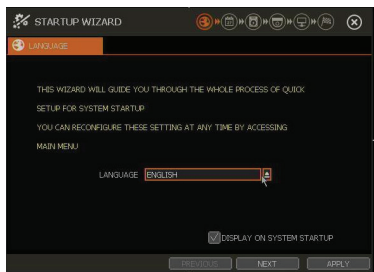
Step 2 – POWERING UP THE DVR

1. When the DVR boots up, it will be in protective mode. This means you will not be able to access the DVR's setup menu until you enter the proper username and password.
2. To unlock the DVR, right-click anywhere on the screen. The login screen will appear. (Default Username / Password: admin / no password)
3. When the DVR boots up for the first time, you will be guided through the Startup Wizard.



Step 3 – STARTUP WIZARD

1. Follow the startup wizard's instructions to setup the DVR's basic settings, including language, date/ time, network and configure your cameras. At any time you can skip steps, go back, or exit the wizard and setup the DVR manually.
2. Language – Select the appropriate language from the drop-down menu options. Press Apply to Save and Next to move to the next step.
3. Set the DVR's date and time, including time zone, Daylight Savings and NTP Time Sync. If needed, set the DVR to sync its time automatically with an external NTP server. Select the server from the TIME SYNC MODE/CYCLE drop-down options and the sync interval. Press Apply to Save and Next to move to the next step.



4. Set the DVR's network settings to match your network's requirements. It is recommended to set the network type to DHCP and let the DVR auto-detect the network's settings, then change the type to Static. Please contact your Network Administrator for additional information. Press Apply to Save and Next to move to the next step.



5. Quick Setup simplifies recording configuration by allowing the user to set all cameras to record according to how many days of data you want, or by resolution.

To enable the Quick Setup option, check the box next to 'USE QUICK SETUP'. All recording options under the Record menu will be disabled.

- a. Quick Recording Setup according to days of storage – You can select how many days of recorded storage you want to have. Based on the DVR's internal storage, the system will automatically setup the recommended recording resolution, frame rate and video quality to match those settings.
- b. Quick Recording Setup – You can select to set all channels of the DVR to record at a specific resolution, frame rate and quality, regardless of events. Manually enter the options for each of the Recording Settings. Total recorded days based on those selections will appear below the settings.
- c. Dual Stream – Configure the Network Stream settings independently from the recording settings. Check the box next to 'USE DUAL STREAM' to enable. The Dual Stream menu enables users to optimize data transmitted over the network by configuring the resolution, FPS, and quality without affecting the recording settings. You can also select to include audio from the camera when streaming video over the network.

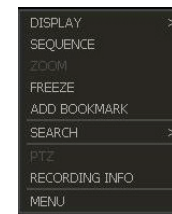


Step 4 – MONITOR YOUR SYSTEM

1. NAVIGATION – use the included USB mouse to navigate around the DVR's monitoring and Setup pages.



- a. MENU BAR – move the mouse's cursor to the bottom of the display area to show the menu bar. You can also display it constantly by pressing the pin icon on the right side.
- b. QUICK MENU OPTIONS – Right-click anywhere on the screen. The quick menu options include:
 - Display Mode Options
 - Start / Stop Camera Sequence View
 - Camera Control features such as Digital Zoom and Image Freeze
 - Bookmark Video
 - Instant Playback and Search
 - PTZ Camera Control
 - Recording Information
 - Access to the Main Menu



2. HELP – For your convenience, the HELP button located at the bottom right of setup screens includes basic information and explanation of the features and settings in that page, for on-the-go information.

Step 5 – REMOTE MONITORING

DDNS Setup

The DDNS address provides your DVR a URL address, easier to remember than an IP address. This is a free feature supported by Digital Watchdog for its customers.

1. Go to the Network setup menu, and select the 'DDNS' tab.
2. Check USE DDNS to enable (Make sure the DVR's web port has been properly setup in your router).
3. Select DYNLINK.NET (default).
4. Enter a name for your DVR and click the CHECK button. If the name is available, the system will display the following message: "THIS DVR NAME CAN BE USED". Click SAVE to save all changes.
5. To use your DDNS, open an Internet Explorer page and enter the DDNS in the address bar: DVRname.dylink.net:port-number. (Example: http://vmaxahdcore.dylink.net:80)

