



1610 TRAFFIC CONTROL

TRAFFIC SPIKES

ABOVE & IN-GROUND

FEATURES

Surface Mount

- Modular system can accommodate any traffic lane width
- Spikes are ganged 3 and 4 spikes together
- Lock down allows for temporary two-way traffic
- Spike sections are available in 3 foot sections

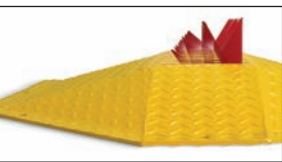
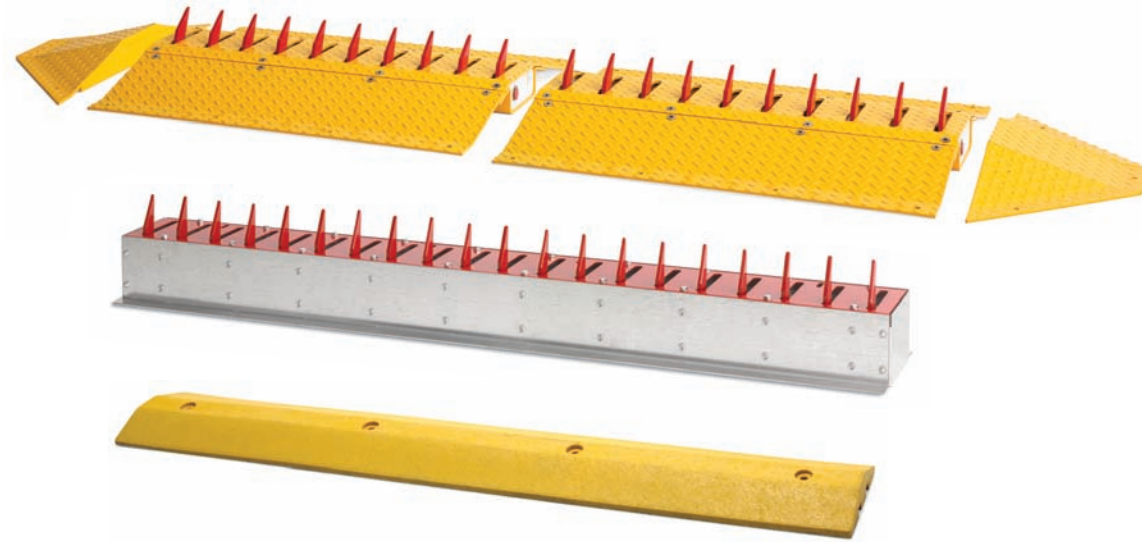
Flush Mount

- Spring loaded or counter weight (non-spring) models available
- Each spike is independently spring loaded or weighted
- Available in 6' sections
- Lock down option available

Speed Bump

- Solid composite material provides a long service life

- Optional warning sign **MUST** be used with installation of all traffic spikes



surface mount

spikes install easily without trenching and double as a speed bump



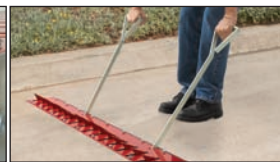
spring loaded

surface mount available in 3 foot sections



flush mount

below ground assembly available with weighted or spring loaded spikes



lock down

in-ground flush mount version available

ACCESS CONTROL SOLUTIONS





DKS Traffic Control products are designed to control traffic direction and speed through a controlled entry location. Traffic spikes are used to enforce one-way lane conditions and speed bumps are used to slow traffic down through a controlled area. DKS traffic control spikes are available in surface and flush mount versions and require no power for operation.

Surface Mount Spikes

Mounting

anchored to concrete surfaces only

Spike operation

spring loaded

Spikes are ganged 3 and 4 together and use a torsion spring for operation

End Cap

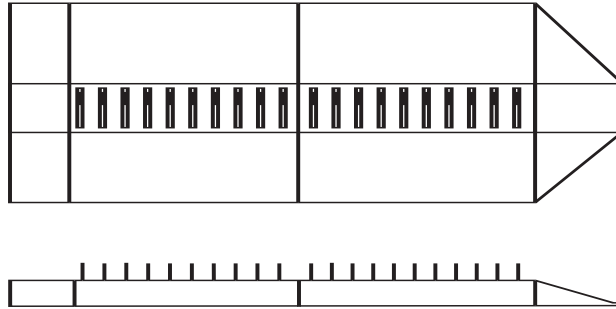
provides a smooth end to the spike section

Housing

1/4-inch diamond plate painted safety yellow. Spikes are painted bright red for easy visibility. 3-inch rise provides a built-in speed bump

Lock down

feature allows spikes to be locked in the down position allowing the traffic lane to be temporarily used for two-way traffic



Spike Sections:

31" W x 3" H x 36" L

78.7cm W x 7.6cm H x 182.8cm D

End Cap:

31" W x 3" H x 12.25" L

78.7cm W x 7.6cm H x 31.1cm D

Flush Mount Spikes

Mounting

flush, in-ground unit anchored in concrete

Spike operation

Spring loaded, each spike has an independent stainless steel spring

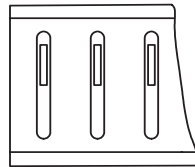
Weighted, each spike is independently counter weighted

Housing

Galvanized steel to inhibit rusting. Spikes and top plate are painted bright red for easy visibility

Lock down option

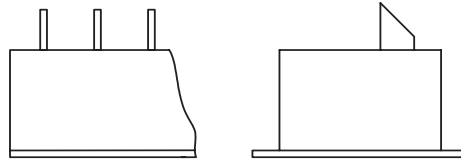
Optional feature allows spikes to be locked in the down position allowing the traffic lane to be temporarily used for two-way traffic



Flush Mount Spike:

8.5" W x 6.5" H x 72" L

21.6cm W x 16.5cm H x 182.8cm D

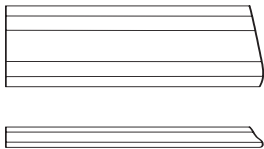


Speed Bump

Mounting

surface mount, anchored to concrete surfaces only

Solid composite material painted safety yellow



Speed Bump:

11.5" W x 2" H x 72" L

29.2cm W x 5cm H x 182.8cm D

WARNING:

Traffic control auto-spike systems are not intended to be used in areas where vehicular traffic is uncontrolled or crosses over the spikes at an angle other than 90°, or where traffic speeds may exceed 5 MPH. Speed bumps, warning signs and/or traffic signals must be used with auto-spike systems.

Distributed by:

DOORKING®, INC.

120 Glasgow Avenue, Inglewood, California 90301 U.S.A. Tel: 310-645-0023 FAX: 310-641-1586 www.doorking.com

© 2006 All Rights Reserved. Product specifications may change without notice. Rev. 6/06

MEMBER:

