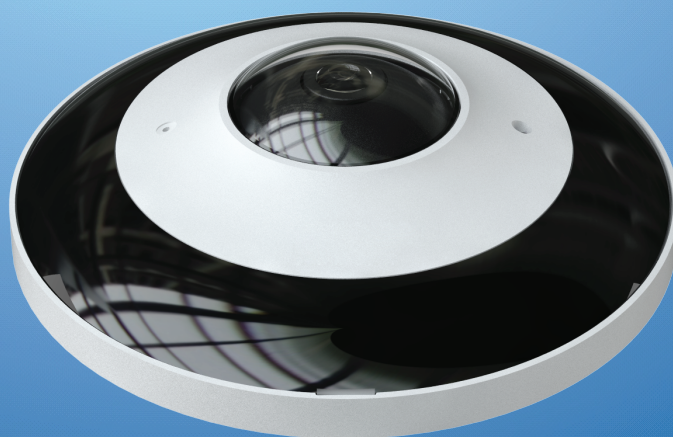
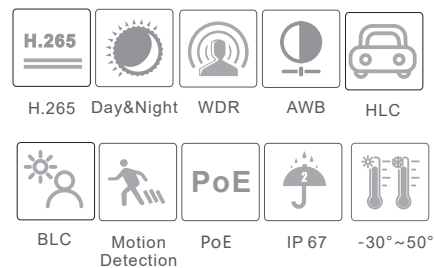


# IP-5FS6006

6MP Network IR Water-Proof  
Fisheye Camera



- 6MP H.265 full real time coding
- Effective pixels: 2160 × 2160;
- ICR auto switch, true day / night
- 20 ~ 30m IR night view distance
- 3D DNR, digital WDR, HLC, BLC and ROI coding
- One CVBS output
- 1CH audio input, 1CH audio output, 1CH built-in MIC
- Built-in micro SD card slot, up to 128GB
- Hardware reset; RS485
- 1CH alarm input; 1CH alarm output
- DC12V/PoE power supply
- Support smart phone, iPad, remote monitoring
- IP67 ingress protection
- Support three streams



## SPECIFICATIONS

Model	IP-5FS6006
<b>Specifications</b>	
<b>Camera</b>	
Image Sensor	1 / 2.9" 6MP progressive scan CMOS
Effective Pixels	2160×2160
Electronic Shutter	1 / 25 s ~ 1 / 100000 s
Min. Illumination	0.068lux@F2.0, AGC ON; 0 lux with IR
Lens	1.07mm @F2.5, horizontal field of view : 180° (wall mounting) 360° (ceiling mounting)
Day & Night	ICR
Wide Dynamic Range	Digital WDR
BLC	Yes
HLC	Yes
Digital NR	3D DNR
Slow Shutter	Yes
<b>Compression Standard</b>	
Video Compression	H.265 / H.264 / MJPEG
Encoding Type	VBR (five levels adjustable) / CBR
Smart Encoding	Support low bitrate, low delay; support ROI coding & SVC technology; support self-adaptive transmission bitrate as the network environment
Bit Rate	128 Kbps ~ 16 Mbps
Audio Compression	G711A / U
Audio Bit Rate	8Kbps ~ 48 Kbps
<b>Image</b>	
Main Stream	① Fisheye+panorama+3 PTZ 50Hz: 25fps@(2160 × 2160/1920×1920/1440×1440), 25fps@(1920 × 1080), 25fps@(960 × 540)*3 60Hz: 30fps@(2160 × 2160/1920×1920/1440×1440), 30fps@(1920 × 1080), 30fps@(960 × 540)*3 ② Fisheye+ 4 PTZ 50Hz: 25fps@(2160 × 2160/1920×1920/1440×1440), 25fps@(960 × 540)*4 60Hz: 30fps@(2160 × 2160/1920×1920/1440×1440), 30fps@(960 × 540)*4
Max. Image Size	2160 * 2160
ROI	Each ROI to be configured separately
Image Settings	ROI, Saturation, Brightness, Chroma, Contrast, Wide Dynamic, Sharpen, NR, etc. adjustable through client software or web browser
<b>Interfaces</b>	
Network	RJ45
Video Output	CVBS output (BNC × 1)
Audio	1CH audio input; 1CH audio output; 1CH built-in MIC
Storage	Built-in micro SD card slot; up to 128GB
Hardware Reset	Yes
Alarm	1CH alarm input; 1CH alarm output
RS 485	Yes
<b>Functions</b>	
Remote Monitoring	Web browsing, CMS remote control
Online Connection	Support simultaneous monitoring for up to 11 users; Support multi-stream real time transmission
Network Protocol	UDP, IPv4, IPv6, DHCP, NTP, RTSP, PPPoE, DDNS, SMTP, FTP, SNMP, UPnP
Interface Protocol	ONVIF, GB-T/28181-2011
Storage	Network remote storage; micro SD card storage
Smart Alarm	Motion detection; Sensor alarm

General function	Watermark, IP address filtering, video mask
PoE	Yes
IR Distance	20 ~ 30 m
Ingress Protection	IP67
<b>Others</b>	
Power Supply	DC12V/PoE
Power Consumption	< 12W
Operating Environment	- 30 °C ~ 50 °C (-22°F~122°F) Humidity: less than 95 % (non-condensing)
Dimensions ( mm )	Φ 130 × 41
Weight ( net )	Approx. 0.45KG
Installation	Ceiling mounting(wall mounting available with the junction box and bracket)

## DIMENSIONS

