

Quick Start Guide

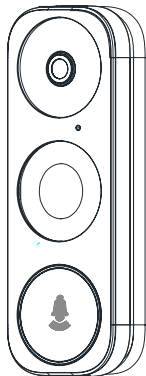
Quick Setup

Power Kit Installation

Doorbell Installation

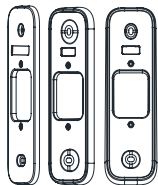
Doorbell Setup

What's in the Box



Doorbell (x1)
Faceplate (x3)

Pick the one that best matched your home from three faceplates.



Mounting Plate (x3)
Pick the one for best surveillance angle.



Screwdriver (x1)

Plate Foam (x1)
Stabilize the mounting plate when installing it in the rough surface.



Drill Bit (x1)



Power Kit (x1)



Wire Harness (x1)



Fuse Wire (x1)



Mini-Level (x1)



U-shaped Wires (x2)



Wire Connectors (x4)



Mounting Screws (x3)



Anchors (x3)



Security Screws (x2)



Fixing Screws (x2)



Doorbell Screws (x2)

Tools You May Need



Drill

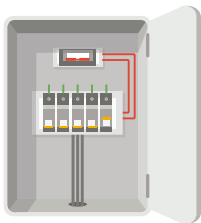


Pencil

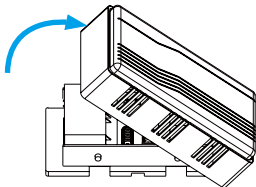
- If you have mechanical chime installed in your home, install the power kit and doorbell.
- i** • If you have electronic chime installed in your home, refer to its own manual to install the power kit, and install the doorbell.
- If no chime is installed, skip power kit installation, install the doorbell and follow the **Option B** in page 5.

Power Kit Installation

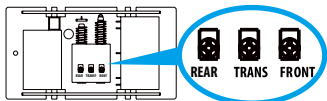
- 1 Shut off the electricity at the breaker that controls doorbell's circuit.
- 2 Insert one end of the wire harness the power kit.



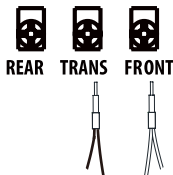
- 3 Remove the cover from your mechanical chime.



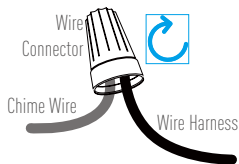
- 4 Remove the existing chime wires in the terminals named TRANS and FRONT.



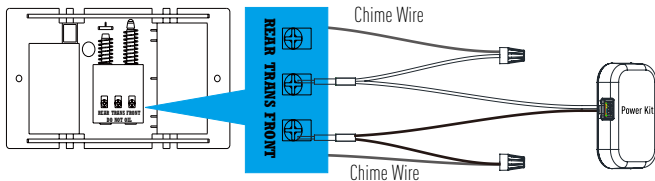
- 5 Connect the wire harness to the chime's terminals named TRANS and FRONT.



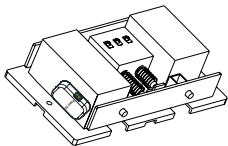
- 6 Insert the existing chime wire and the other end of the wire harness into the wire connector and twist it tightly. Repeat this step with the other chime wire.



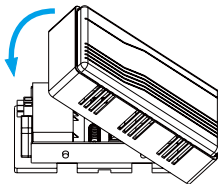
Wiring Overview



- 7 Mount the power kit to the side of the chime.

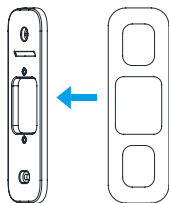
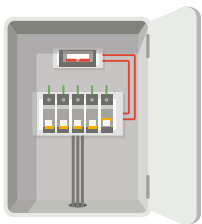


- 8 Put back the chime cover.

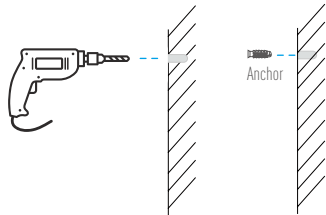
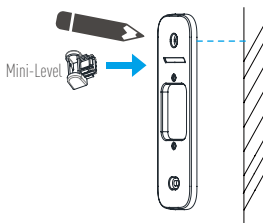


Doorbell Installation

- i** Recommended Installation Height: 4 feet (1.2 m) above the ground.
- 1** Shut off the electricity at the breaker that controls the doorbell's circuit.
- 2** (Optional) When the wall is uneven, paste the plate foam to the mounting plate.

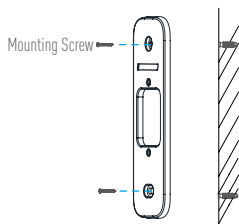


- 3** Insert the mini-level into the mounting plate and mark the drill points when its bubble stays in the middle.
- 4** Drill holes according to drill points and insert anchors.

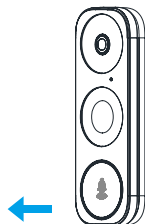


- i** Remove the mini-level when drill points are marked.
- i** Recommended Hole Depth: 1 inch to 1.2 inch (25 to 30 mm).

5 Fix the mounting plate to the wall.

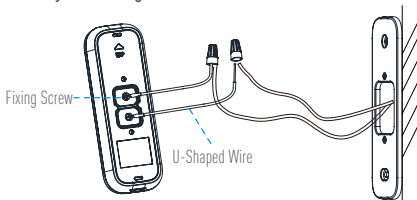


6 Remove faceplate on your doorbell from bottom to top.

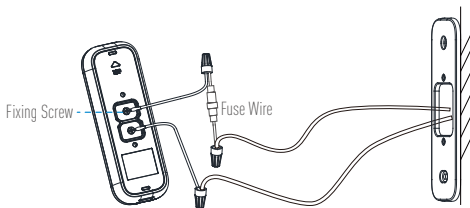


7 If you have a chime installed, follow **Option A**; if not, follow **Option B**.

Option A Connect doorbell with your existing doorbell wires.

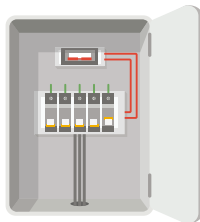
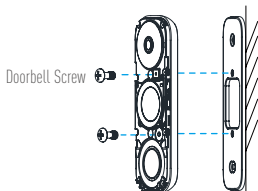


Option B Connect the fuse wire with your existing doorbell wire.



Power Supply: 8 to 24 VAC

- 8 Fix the doorbell to the mounting plate by inserting the doorbell screws.
- 9 Restore the electricity at the breaker.



- Doorbell is powered on when its indicator flashes blue quickly. If not, make sure your electricity is off and check the wiring. If yes, proceed to doorbell setup.
- For the first time use, please power on the doorbell and wait for 3 hours before using it, or else the chime in your home may not work.

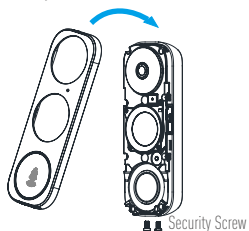
Doorbell Setup

- 1 Add to app.

- Connect your mobile phone to Wi-Fi.
- Download and install the app.
- Register a user account following the start-up wizard and log in.
- On the Home screen, tap "+" on the upper-right corner to go to the scan QR code page.
- Scan the QR code on the device or the cover of this manual when the indicator flashes blue.
- Follow the app wizard to finish Wi-Fi configuration.

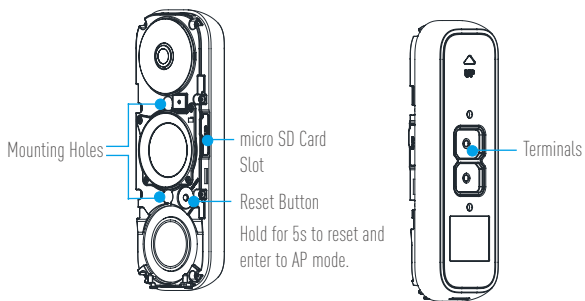
- If you want to change your doorbell's Wi-Fi, press and hold the reset button for 5s and repeat this part.

- 2 Put the faceplate back and insert two security screws into the bottom of the doorbell to secure the faceplate.



Appendix

Basics



LED Indicator

Blue Light

Flashing

Doorbell is ready for Wi-Fi configuration.

Steady on

Doorbell is working.

Red Light

Flashing Fast

Device Exception

Steady on

Doorbell is powering on.

Use AP Mode for Wi-Fi Configuration

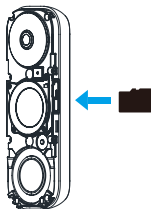
- For AP hotspot configuration, press the **Reset** button for 5 seconds and then you will hear voice prompt.
- Wait for a few seconds until you see the LED indicator flashes blue.
- Follow the voice prompt to connect Wi-Fi.

Wi-Fi Name: SoftAP_XXXXXXXX (9-digit Serial No.)
Default Password: SoftAP_XXXXXX (Verification Code)
eg. Default Password: SoftAP_ABCDEF


Serial No. and verification code are listed on the cover of this manual.

- Go back to app after successful connection. Tap **Next**.
- Search out the Wi-Fi you want the device to connect and enter password.

SD Card Management



1. In the app, tap the **Storage Status** in the Device Settings interface to check the SD card status.

Wi-Fi Configure	TEST-WiFi  >
Storage Status	>
Device Version	Vx.x.x build xxxxxx No new version.

2. If the card status displays as **Uninitialized**, tap to initialize it.
The status will then change to **Normal** and it can store videos and/or pictures.

