

The Trusted Connection

-GENESIS-

Delivering Continuous Connectivity

Security Cable

The Most Trusted Brand

Genesis® Cable

The foundation of the highest performing security systems in the world.



Reliability and continuous connectivity are critical for every security network. As the most trusted low-voltage cable on the market today, Genesis Security Cable is foundational for powering the highest performing security networks in the world. System connectivity and performance cannot be trusted to inferior wire. Genesis Security Cable optimizes intrusion, access control and video systems for continuous high performance at all times. **Count on it.**

Count On It

At Genesis, we're committed to raising standards, continuously innovating and developing superior cable solutions for today's evolving technologies. Engineered and tested to exceed the highest quality standards, Genesis produces the most trusted and complete selection of low-voltage cable today.

To drive your success, we deliver a hassle-free experience from specification through installation to operation, across a wide range of residential and commercial applications. Future-proof security and access control systems, insure high performance and drive a greater return on investment with Genesis Cable – the absolute best value on every level.



Innovative Solutions for Every Application

Burglar alarm systems | Access control | Closed circuit television (CCTV)

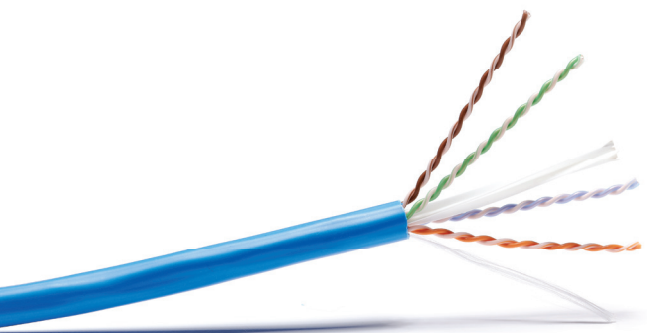
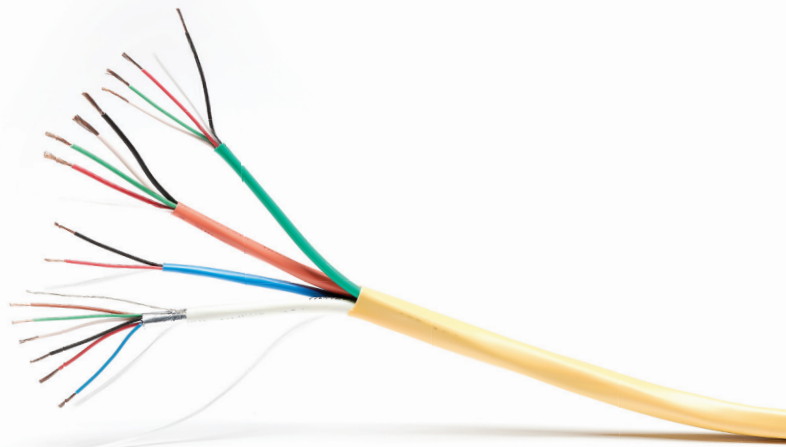


Profusion®

Unconstrained by binders, adhesives or thick overall jackets, Profusion decreases material costs by up to 16% and reduces entry point wiring time by up to 30%. This single, jacketless cable is twisted together like a rope, bundling individual lock power, door contact, card reader and request-to-exit wiring.

Access Control Composite Cable

Designed to bend freely around corners and obstructions without getting snagged, this convenient, jacketed bundle combines individual lock power, door contact, card reader and request-to-exit cables for smoother pulls and more efficient installations.



Cat 6A Cable

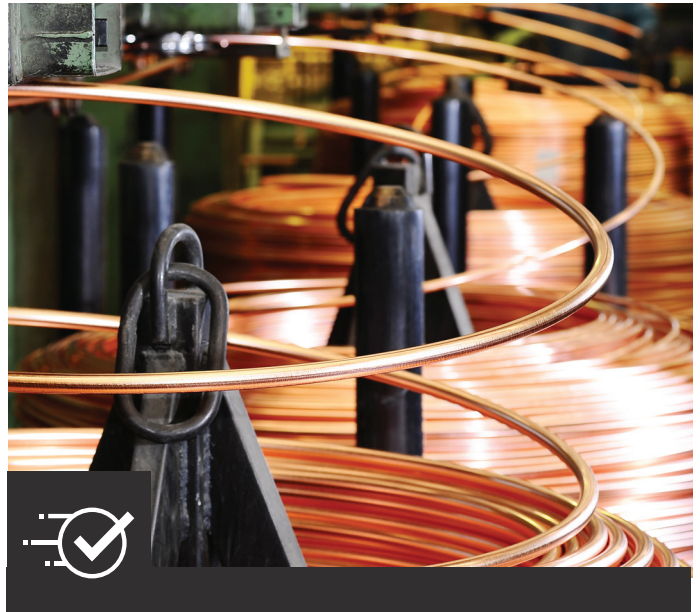
Provides maximum bandwidth, capacity and speed – and 10G performance – delivering optimal results for today's high-tech applications.

Your Single Source Provider



Dealer Loyalty Programs

Genesis dealers can earn rewards - including rebates and co-op dollars - for buying and installing Genesis Cable. The more you buy, the greater your rewards.



3-for-1 Warranty

At Genesis, we insure protection for you and your customers. If any cable fails to perform to spec, we'll replace it - three units to one.



Toll-Free Customer Support

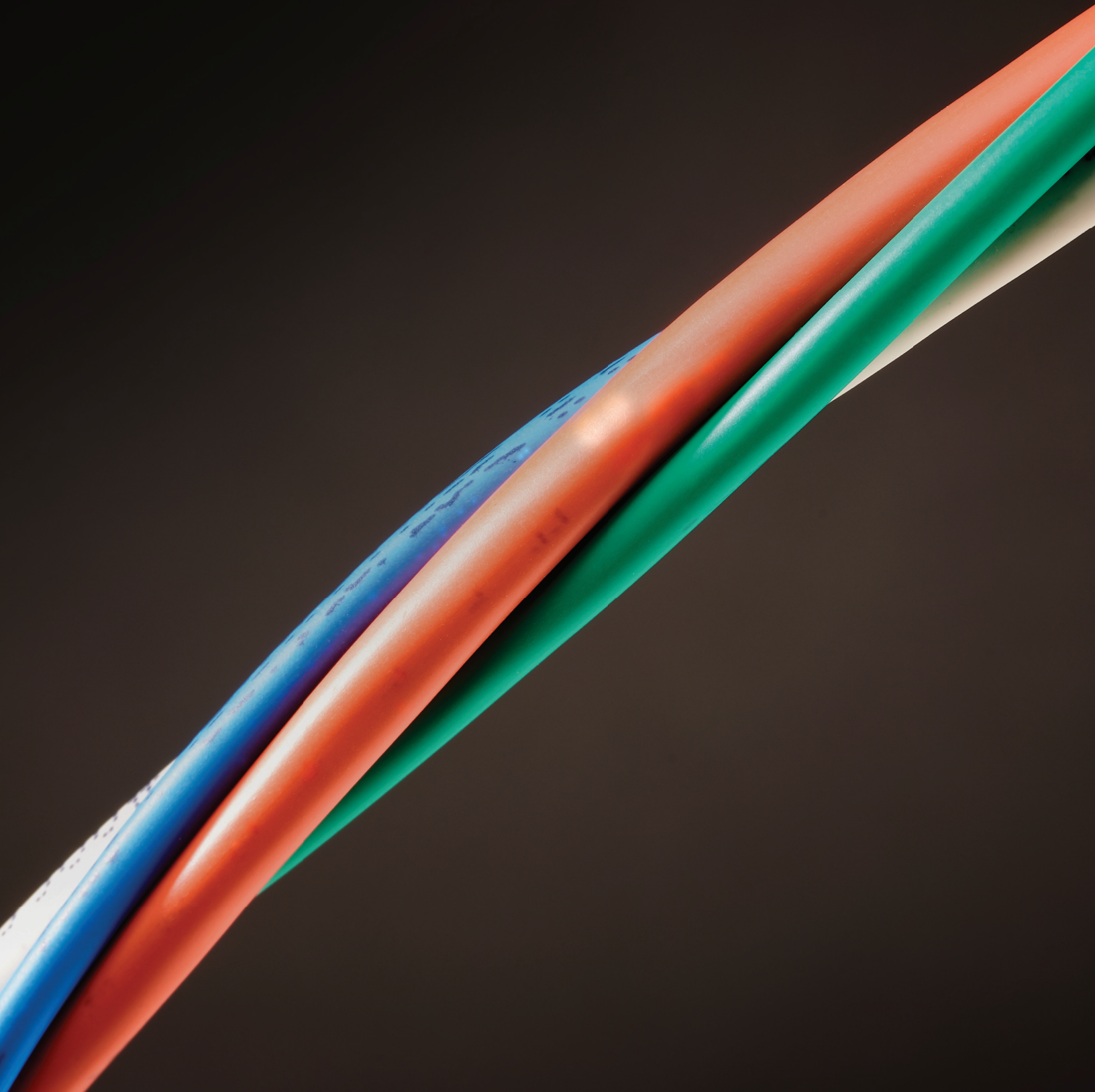
We deliver confidence by insuring prompt response and resolution when and where you need it. When you work with Genesis, you work with the best.



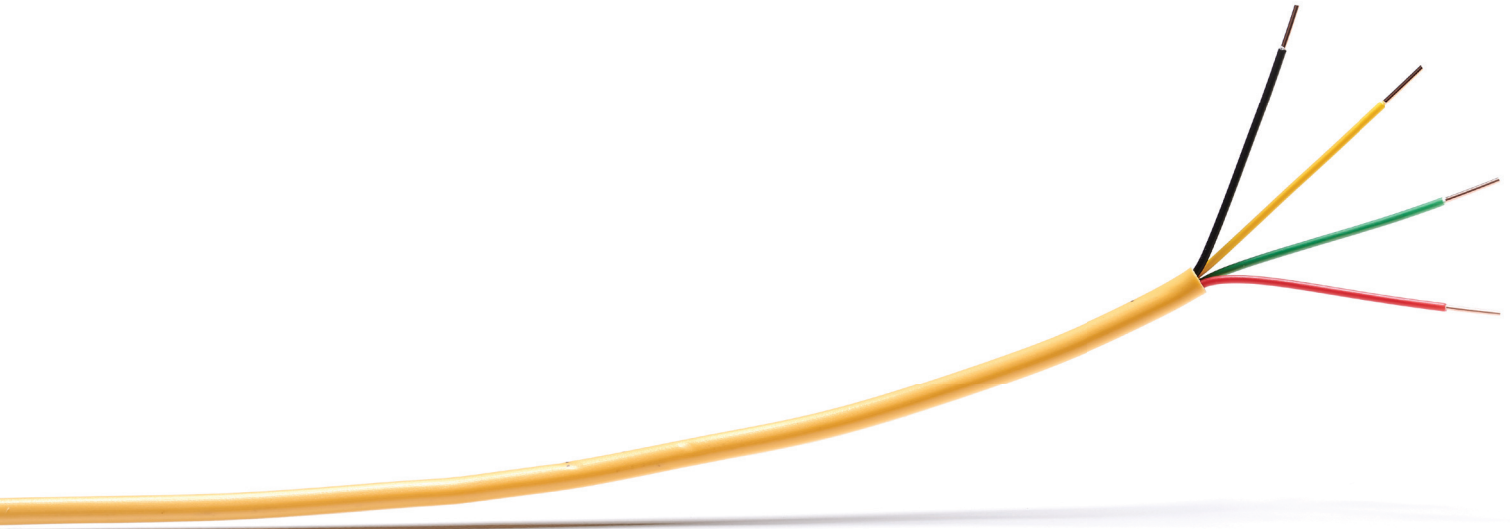
In-Stock, Readily Available

Genesis keeps your business running on schedule, with product availability from more than 10,000 locations nationwide.

Product Overview + Specifications



Intrusion: Unshielded



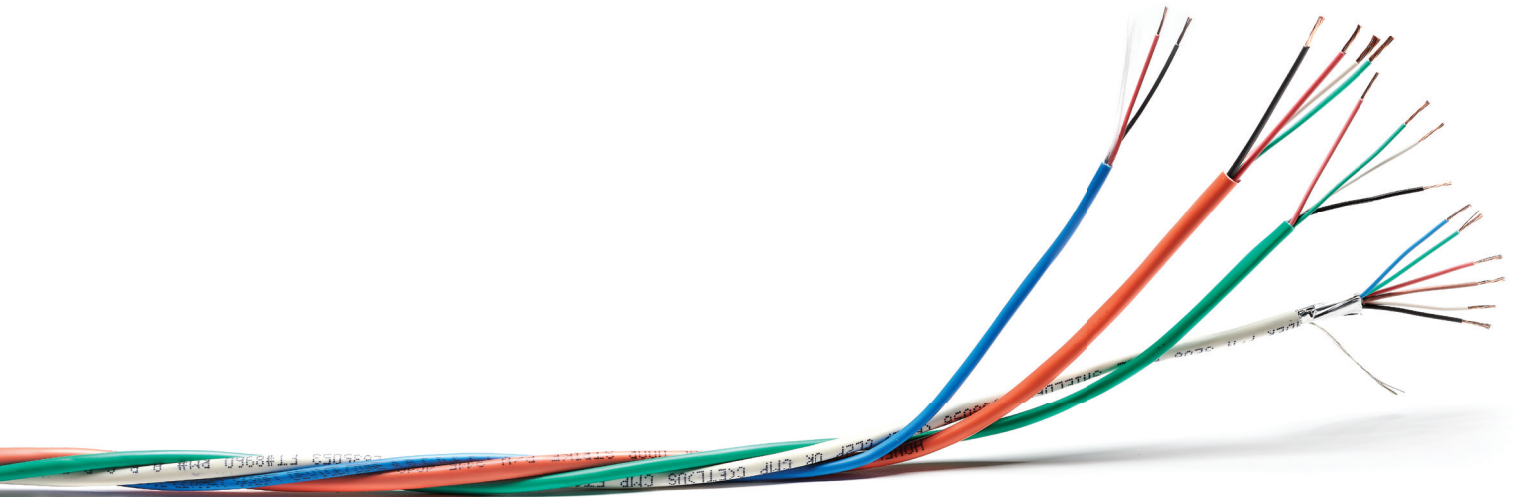
AWG	Number of Conductors	Stranding	Shield	DC Resistance (Ohms/1000')	Nominal Capacitance (pF/ft.)	Nominal Outer Diameter (inches)	Average Weight (Pounds/1000')	Part Number
Plenum Rated (CMP/CL3P/FT6 Listed)								
22	2	7 Strand	Unshielded	16.90	26.0	0.116	8.7	3102
22	4	Solid	Unshielded	18.00	17.6	0.120	12.8	3103
22	4	7 Strand	Unshielded	16.90	26.0	0.133	14.4	3104
18	2	19 Strand	Unshielded	6.66	32.2	0.148	16.0	3114
18	4	19 Strand	Unshielded	6.66	32.2	0.172	28.3	3115
Riser Rated (CMR/CL3R/FT4 Listed)								
22	2	Solid	Unshielded	18.00	18.8	0.106	8.0	2101
22	2	7 Strand	Unshielded	16.90	18.5	0.116	9.2	2102
22	4	Solid	Unshielded	18.00	18.8	0.120	12.3	2103
22	4	7 Strand	Unshielded	16.90	18.5	0.135	13.4	2104
18	2	19 Strand	Unshielded	6.66	22.7	0.150	16.0	2114
18	4	19 Strand	Unshielded	6.66	22.7	0.174	28.1	2115

Intrusion: Shielded



AWG	Number of Conductors	Stranding	Shield	DC Resistance (Ohms/1000')	Nominal Capacitance (pF/ft.)	Nominal Outer Diameter (inches)	Average Weight (Pounds/1000')	Part Number
Plenum Rated (CMP/CL3P/FT6 Listed)								
22	2	7 strand	Shielded	16.90	44.0	0.120	11.0	3202
22	4	7 strand	Shielded	16.90	39.2	0.137	17.0	3204
18	2	19 strand	Shielded	6.66	59.3	0.156	19.3	3214
18	4	19 strand	Shielded	6.66	50.8	0.182	32.2	3215
Riser Rated (CMR/CL3R/FT4 Listed)								
22	2	7 strand	Shielded	16.90	32.0	0.120	9.6	2202
22	4	7 strand	Shielded	16.90	28.2	0.141	15.6	2204
18	2	19 strand	Shielded	6.66	42.9	0.154	18.7	2214
18	4	19 strand	Shielded	6.66	36.3	0.180	31.4	2215

Access Control: PROFUSION®



AWG	Number of Conductors	Stranding	Shield	DC Resistance (Ohms/1000')	Nominal Capacitance (pF/ft.)	Nominal Outer Diameter (inches)	Average Weight (Pounds/1000')	Part Number
Plenum Rated (CMP/CL3P/FT6 Listed)								
18	4	19 strand	N/A	6.52	22.8			
22	6	7 strand	Shielded	16.90	24.3	0.395	77.2	3195
22	2	7 strand	N/A	16.90	24.3			
22	4	7 strand	N/A	16.90	24.3			
18	4	19 strand	Shielded	6.52	22.8			
22	6	7 strand	Shielded	16.90	24.3	0.395	88.5	3295
22	2	7 strand	Shielded	16.90	24.3			
22	4	7 strand	Shielded	16.90	24.3			
18	4	19 strand	Shielded	6.52	22.8			
Riser Rated (CMR/CL3R/FT4 Listed)								
18	4	19 strand	N/A	6.52	22.8			
22	6	7 strand	Shielded	16.90	24.3	0.410	69.5	2195
22	2	7 strand	N/A	16.90	24.3			
22	4	7 strand	N/A	16.90	24.3			
18	4	19 strand	Shielded	6.52	22.8			
22	6	7 strand	Shielded	16.90	24.3	0.410	80.3	2295
22	2	7 strand	Shielded	16.90	24.3			
22	4	7 strand	Shielded	16.90	24.3			
18	4	19 strand	Shielded	6.52	22.8			

Access Control: Composite



AWG	Number of Conductors	Stranding	Shield	DC Resistance (Ohms/1000')	Nominal Capacitance (pF/ft.)	Nominal Outer Diameter (inches)	Average Weight (Pounds/1000')	Part Number
Plenum Rated (CMP/CL3P/FT6 Listed)								
18	4	19 strand	N/A	6.52	22.8			
22	6	7 strand	Shielded	16.90	24.3	0.350	89.0	3196
22	2	7 strand	N/A	16.90	24.3			
22	4	7 strand	N/A	16.90	24.3			
18	4	19 strand	Shielded	6.52	22.8			
22	6	7 strand	Shielded	16.90	24.3	0.400	100.8	3296
22	2	7 strand	Shielded	16.90	24.3			
22	4	7 strand	Shielded	16.90	24.3			
Riser Rated (CMR/CL3R/FT4 Listed)								
18	4	19 strand	N/A	6.52	22.8			
22	6	7 strand	Shielded	16.90	24.3	0.350	83.1	2196
22	2	7 strand	N/A	16.90	24.3			
22	4	7 strand	N/A	16.90	24.3			
18	4	19 strand	Shielded	6.52	22.8			
22	6	7 strand	Shielded	16.90	24.3	0.390	96.2	2296
22	2	7 strand	Shielded	16.90	24.3			
22	4	7 strand	Shielded	16.90	24.3			

Video Surveillance: Analog



Style	Coaxial Shield	Recommended Video Transmission Limit (Feet)	Rating	Nominal Outer Diameter (inches)	Average Weight (Pounds/1000')	Part Number
18 AWG RG6	95% Bare Copper	1500	General Purpose (CL2)	0.275	42.0	5002
20 AWG Bare Copper RG59	95% Bare Copper	750	Plenum (CMP/FT6)	0.195	39.0	5351
20 AWG Bare Copper RG59	95% Bare Copper	750	Riser (CMR/FT4)	0.242	32.0	5301
20 AWG Bare Copper RG59	95% Bare Copper	750	General Purpose (CL2)	0.242	36.0	5001
20 AWG Bare Copper RG59	95% Copper Clad Aluminum	600	General Purpose (CL2)	0.242	30.0	6501
20 AWG Bare Copper RG59 + 18/2 Siamese	95% Bare Copper	750	Plenum (CMP/FT6)	0.420 x 0.200	65.0	5355
20 AWG Bare Copper RG59 + 18/2 Siamese	95% Bare Copper	750	General Purpose (CM/CL2)	0.420 x 0.245	60.0	5013
20 AWG Bare Copper RG59 + 18/2 Siamese	95% Bare Copper	750	Water Resistant	0.421 x 0.245	65.0	5104
20 AWG Bare Copper RG59 + 18/2 Siamese	95% Copper Clad Aluminum	600	General Purpose (CM/CL3)	0.425 x 0.240	42.8	6508
24 AWG Mini-Coax	95% Bare Copper	375	General Purpose (CL2)	0.145	15.0	5020

Video Surveillance: IP



Number of Pairs	Center Spline	Bandwidth @ 100 Meters	Bandwidth @ 30 Meters	Recommended PoE Limit	Rating	Nominal Outer Diameter (inches)	Average Weight (Pounds/1000')	Part Number
Cat 6A Unshielded (U/UTP)								
4	Yes	10 Gbps	40 Gbps	60W and above	Plenum (CMP/FT6)	0.320	45.0	5393
4	Yes	10 Gbps	40 Gbps	60W and above	Riser (CMR/FT4)	0.350	44.0	5193
Cat 6+ Shielded (F/UTP)								
4	Yes	1 Gbps	10 Gbps	Up to 60W	Plenum (CMP/FT6)	0.275	45.0	5392
4	Yes	1 Gbps	10 Gbps	Up to 60W	Riser (CMR/FT4)	0.275	35.0	5192
Cat 6+ Unshielded (U/UTP)								
4	Yes	1 Gbps	10 Gbps	Up to 60W	Plenum (CMP/FT6)	0.240	28.0	5102
4	Yes	1 Gbps	10 Gbps	Up to 60W	Riser (CMR/FT4)	0.240	25.0	5092
Cat 6 Unshielded (U/UTP)								
4	No	1 Gbps	10 Gbps	Up to 25.5W	Plenum (CMP/FT6)	0.205	25.0	6361
4	No	1 Gbps	10 Gbps	Up to 25.5W	Riser (CMR/FT4)	0.205	24.0	6360
4	No	1 Gbps	10 Gbps	Up to 25.5W	Direct Burial	0.236	27.0	5110
4	No	1 Gbps	10 Gbps	Up to 25.5W	Water Resistant	0.235	27.0	5093
Cat 5e Shielded (F/UTP)								
4	No	1 Gbps	1 Gbps	Up to 12.95W	Plenum (CMP/FT6)	0.230	33.0	5388
4	No	1 Gbps	1 Gbps	Up to 12.95W	Riser (CMR/FT4)	0.250	28.0	5178
Cat 5e Unshielded (U/UTP)								
4	No	1 Gbps	1 Gbps	Up to 12.95W	Plenum (CMP/FT6)	0.200	21.0	5088
4	No	1 Gbps	1 Gbps	Up to 12.95W	Riser (CMR/FT4)	0.200	21.0	5078
4	No	1 Gbps	1 Gbps	Up to 12.95W	Direct Burial	0.281	23.0	5090
4	No	1 Gbps	1 Gbps	Up to 12.95W	Water Resistant	0.225	24.0	5097

-GENESIS-

COUNT ON IT

7701 95th Street | Pleasant Prairie, WI 53158 | 800-222-0060 | genesis.resideo.com

Copyright © 2019 Resideo Technologies, Inc.