

WIN-PAK™ 2.0

Access Control Solutions

WIN-PAK™ 2.0 Release 4 is the latest version of the industry's most comprehensive access control software. WIN-PAK's state-of-the-art features have been enhanced with digital video integration and Windows XP Professional and 2000 OS support to provide a powerful solution to your day-to-day access control concerns. Honeywell understands that protecting your business is a top priority and you can feel comfortable knowing your business is secure when you use WIN-PAK 2.0.

Operating System

WIN-PAK is a true 32-bit, three-tier application that runs under Windows® XP Professional, 2000 or NT 4.0. Components load as services placing them exclusively under control of the computer administrator. WIN-PAK's multi-threading design takes advantage of the power that a multiple processor computer provides, thus handling more information in less time. Whether you use a stand-alone or networked system, WIN-PAK is your solution.

WIN-PAK can filter system events to specific operators for appropriate action. Operators can control the pan, tilt and zoom of CCTV cameras from the floor plan view. They can see the entire floor at a glance and view area details at the same time.

WIN-PAK provides a high performance security management solution that combines a fully integrated badging interface with GUI-based and alarm map monitoring capabilities. In addition, WIN-PAK supports multiple vendor devices and offers the following benefits and features:

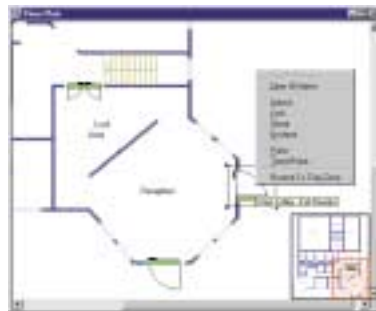
- Quick Start Configuration Wizard
- Digital Video Integration
- CCTV control interface
- Flexible operator permission scheme
- Global event processor
- Video imaging and card badging
- Guard Tours by card reader or contact point
- Door/point grouping
- Global anti-passback
- Real-time monitors and history queries
- On-line help
- Enhanced Operator Action Reports

FEATURES

- Microsoft® Data Engine (MSDE)
- Up to 64 direct communication ports
- Virtually unlimited readers
- Integrated Digital Video, CCTV control, video imaging & card badging
- Dynamic floor plan graphics with multiple maps
- Camera control display with floor plan
- Smart Scheduling for dial-up and dial-back from remote location
- Card Locate
- Import bitmap files for photos/backdrops and Windows Metafiles for floor plans
- Batch Card Add and Batch Card Delete
- Muster and In/Out reporting
- Card activation/deactivation by day/month/year
- Compatible with N-1000 Series Controllers
- Prints both front and back on PVC style cards of any standard technology



Control cameras while monitoring others from the Digital Video Pop-Up window. Complete PTZ control including eight presets. Up to 16 cameras can be viewed in one Pop-Up window.



Floor plan views can be used to monitor and control devices in the access control system.



WIN-PAK™ 2.0

Access Control Solutions



BENEFITS

- Complete access control system running on Windows® XP Professional, 2000 or NT 4.0
- Quick Start Configuration Wizard saves time in setup and programming
- Supports direct TCP/IP connection to make use of existing network infrastructure
- Database and hard drive limit and capacity features prompt administrator when maintenance is required
- Scheduler backup utility maintains a recent WIN-PAK 2.0 database
- View live or recorded events using WIN-PAK's integrated Digital Video
- Enhanced control map makes it easier to view the status of devices by utilizing color, shape and pop-up text

SPECIFICATIONS

Access Control (using N-1000-IV-X)

- Cardholder capacity:
 - Unlimited with WIN-PAK™ software host grant feature
 - 25,000 per N-1000-IV-X with optional memory expansion
- Time zones: Unlimited with WIN-PAK™ software/63 per N-1000-IV-X
- Holidays: 32
- On-line transaction storage: Limited only by drive space
- Controllers: 1,984 hardwired and unlimited for dial-up connections
- Readers: 7,936 hardwired and unlimited for dial-up connections
- Elevator control: Up to 32 group definitions controlling 27 stops

Alarm Monitoring

- Monitor points: 31,744
- Digital video pop-up on alarm
- Control PTZ from pop-up
- Retrieve digital video for alarm event
- Operators/passwords: Unlimited
- 40 user-defined cardholder data fields
- Sound files played per event status

Reporting & Operating

- Operator instructions: Definable per alarm point and state

- Reports: Defaulted with WIN-PAK™ software/user definable via crystal reports
- Graphical map import: WMF
- Export Reports in a CSV format

Technology Support

- Proximity
- Wiegand
- Keypad
- Magnetic Stripe
- Barcode
- Biometrics (Hand and Fingerprint)
- Card and PIN

Standard Features

- Access control
- System and activity monitoring
- Database management
- Database and event reporting
- Map manager
- Floor plans
- Video verification
- Mustering and tracking
- Digital Video and CCTV integration

Other

- Interface: Complies with Microsoft interface guidelines
- Database engines: MSDE (standard)
- Networking protocols: TCP/IP

HARDWARE BASICS

Minimum Requirement Configuration

This setup is sufficient for small systems with one to ten readers, up to 250 cards, and two communication ports. While this is a good configuration for a workstation, it is not sufficient for use as a server.

- Pentium II-233Mhz CPU
- 256 megabytes of RAM
- 2.1 gigabyte hard disk
- Two serial communication ports
- Tape backup drive
- One parallel port (badging to be done on workstation)
- 15" SVGA color monitor (1024 x 768, 256 color)
- Supported Operating Systems:
 - Microsoft® Windows XP Professional;
 - Windows 2000 Professional, Server, Advanced Server with Service Pack 4;
 - Windows NT 4.0 with Service Pack 6a;
 - Windows 98SE (Workstation only)

Recommended Configuration

This is the recommended hardware configuration for basic access control, including badging, for systems with one to 100 readers, up to 5,000 cards, and up to eight communication ports. It can be used for a stand-alone system, a workstation or a server. Additional RAM will improve performance.

- Pentium III-700Mhz CPU
- 256 megabytes of RAM
- Six gigabyte SCSI hard disk
- Two serial communication ports
- Eight gigabyte SCSI tape backup
- One parallel port (Two for badging)
- 17" 1024 x 768 true color monitor
- Operating Systems:
 - Microsoft® Windows XP Professional;
 - Windows 2000 Professional, Server, Advanced Server with Service Pack 4;
 - Windows NT 4.0 Service Pack 6a



The Alarm View displays prioritized events and digital video pop-ups in real time. Alarm events and associated digital cameras can all be controlled from the Alarm View.

HARDWARE BASICS CONT'D

Performance Configuration

This configuration is recommended for systems using more than 16 communication ports. It is suitable for systems using up to the system capacity for readers, up to 25,000 cards, and 64 communication ports. It is suitable for a stand-alone system or a server.

- Pentium 4-2 Ghz CPU
- 512 megabytes of RAM
- 18 gigabyte, 15,000 rpm SCSI hard disk
- two serial communication ports

- 20 gigabyte SCSI tape backup
- One parallel port (badging to be done on workstation)
- 19" 1280 x 1024 true color monitor
- Supported Operating Systems: Microsoft® Windows XP Professional; Windows 2000 Professional, Server, Advanced Server with Service Pack 4; Windows NT 4.0 Service Pack 6a

NOTE: It is recommended to use multiple processors for large volume systems.



RECOMMENDED COMPONENTS

Controllers

- N-1000-IV-X Four reader controller module with four additional relay outputs and additional card capacity
- N-1000-IV Four reader controller module
- N-1000-III-X Two reader controller module with four additional relay outputs and additional card capacity
- N-1000-III Two reader controller module



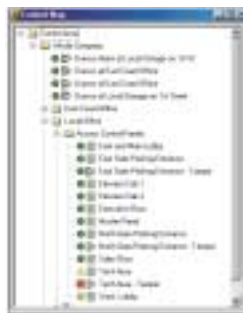
A variety of reports can be viewed on-screen, exported or printed.

Hardwired communication devices for N-1000 series controllers

- RS-232 to RS-485 single port converter (N-485-PCI-2)
- RS-485 to 20ma single port converter (C-100-A1)

Network communication devices for N-1000 series controllers

- RS-232 to LAN converter, 10/100 mbps (LANSRLU1)
- RS-232 to RS-485 LAN connector that works in conjunction with the LANSRLU1 (N485PCI2L)

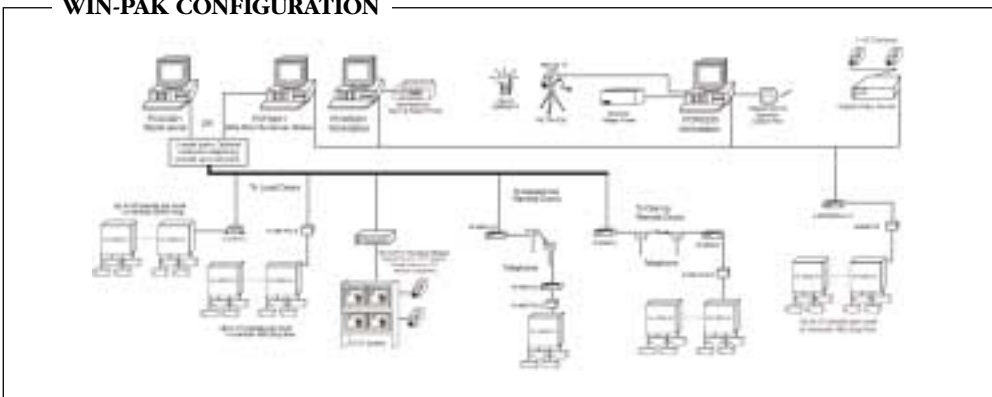


The control map provides a user-defined view that utilizes color, shape and tool tip pop-ups to display device status.

BENEFITS:

- Convenient software package that monitors and controls doors, alarm points and cameras from a floor plan view or control tree
- Cardholders may be tracked anytime, anywhere, using the Tracking and Muster view/report
- 40 user-defined note fields are available for each cardholder per account providing more information for authorized system operators
- Control map and floor map views support color-blind vision
- User-friendly autocard lookup provides immediate and detailed information to enable quick response to each card read or each card presentation
- Alarms and devices routed to a specified operator for immediate and efficient response

WIN-PAK CONFIGURATION



WIN-PAK™ 2.0

Access Control Solutions

ORDERING

WIN-PAK Management System

Software Only

WINPAK2	Single user license
WINPAK2U5	Up to five-user license
WINPAK2U10	Up to 10-user license
WINPAK2U20	Up to 20-user license
UPGWP2U5	Upgrade up to five users from a single user license
UPGWP2U10	Upgrade up to 10 users from a five-user license
UPGWP2U20	Upgrade up to 20 users from a 10-user license

WIN-PAK System, Five-User License

PCAC201	Access control system; includes software, computer, communication adapter and printer
PCAC202	Access control system; includes software and computer
PCAC205	Badging ready access control system; includes software, computer, communication adapter and video capture card

WIN-PAK Badging System, Five-User License

PCAC235	Badging system; includes software, computer, camera, video capture card, power supply, tripod, single point light kit and single sided card printer with HoloKote™
PCAC235DM	Badging system; includes software, computer, camera, video capture card, power supply, tripod, single point light kit, and two sided and magstripe encoder card printer with HoloKote™.
PCAC235DO	Badging system; includes software, computer, camera, video capture card, power supply, tripod, single point light kit, and two sided card printer with HoloKote™.
PCAC235MO	Badging system; includes software, computer, camera, video capture card, power supply, tripod, single point light kit, and magstripe encoder card printer with HoloKote™.

PCAC236DO	Badging system; includes software, computer, camera, video capture card, power supply, tripod, single point light kit, and two sided HDP card printer with SmartGuard™ security card.
------------------	---

PCAC240DB	Badging system; includes software, computer, camera, video capture card, power supply, tripod, single point light kit, and two sided, dual hopper card printer with SmartGuard™ security card and SmartShield™.
------------------	---

File Servers

PCFS201	Includes 10-user software license, file server computer and event printer
PCFS202	Includes 10-user software license and file server computer

Workstations

PCWS201	Standard Workstation
PCWS205	Badging workstation computer with video capture card only

Workstations with Badging

PCWS235	Simplex badging workstation
PCWS235DM	Duplex/Magnetic stripe encoder badging workstation
PCWS235DO	Duplex badging workstation
PCWS235MO	Simplex/Magnetic stripe encoder badging workstation
PCWS236DO	HDP Duplex badging workstation
PCWS240DB	Dual Bin badging workstation

N-1000 Series Controllers

N-1000-IV-X	Four reader controller module with four additional relay outputs and additional card capacity
N-1000-IV	Four reader controller module
N-1000-III-X	Two reader controller module with four additional relay outputs and additional card capacity
N-1000-III	Two reader controller module

Honeywell Access Systems

135 W. Forest Hill Avenue
Oak Creek, WI 53154
414 766 1700
414 766 1798 Fax

www.honeywellaccess.com

Copyright ©2004 Honeywell International Inc. TD5100 rev0504

Use  online @ www.honeywellaccess.com

*Microsoft Windows 2000 Advanced Server, Windows 2000 Professional, Windows 2000 Server, Windows NT, and Windows XP Professional are registered trademarks of Microsoft Corporation.
*SmartGuard and SmartShield are registered trademarks of Fargo Electronics.

*HoloKote is a registered trademark of Ultra Electronics.