

## Door Hardware

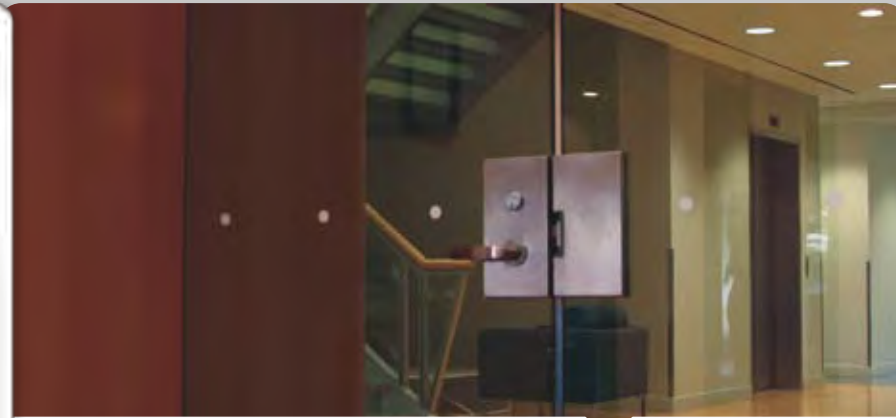
## Access Control Kits



The Door Hardware Kit is the perfect way to complete your access control starter or expansion kit installation. This kit includes the essential door hardware accessories in one box including: T.Rex request-to-exit detector, door contact, electric door strike and 3 polished stainless steel door latch faceplates for aluminum and wood door frames.

### Features:

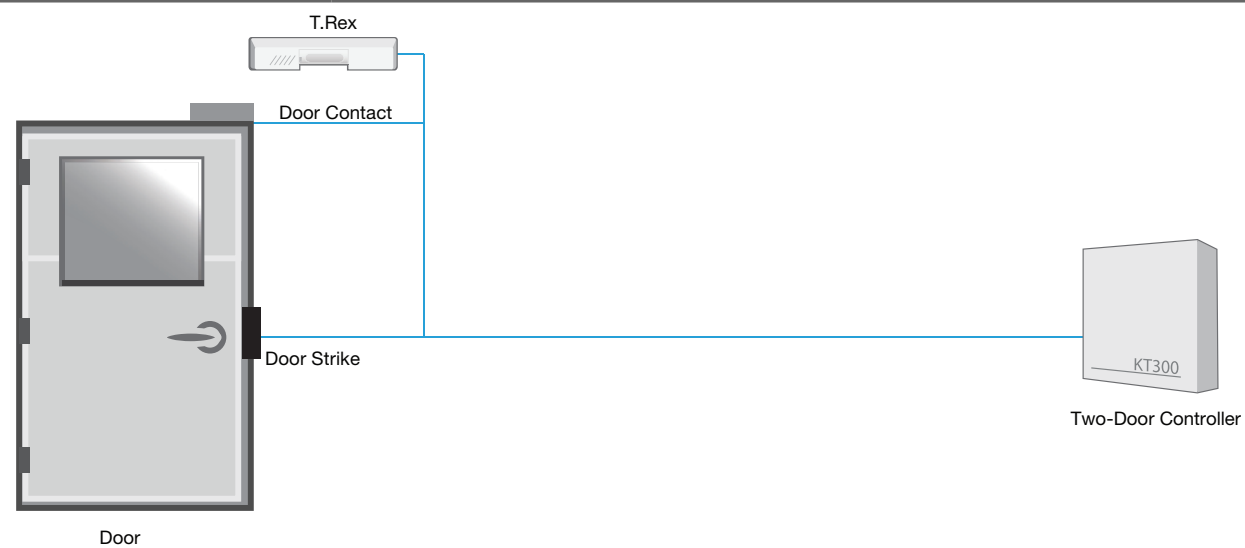
- Essentials needed to complete an access control system
- Electric door strikes compatible with and powered by door controllers
- All-in-one solution
- Convenient and time saving



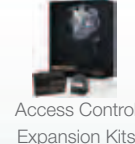
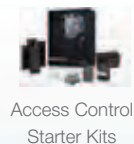
*“Complete your access control installation”*

Model Number:

DK-1	Door Hardware Kit: T.Rex LT Request-To-Exit-Detector, GRI Magnetic Door Contact, RCI-41U59 Electric Door Strike, 3 Stainless Steel. Faceplates: 1 1/4 x 4 7/8 in. square corner, 1 1/4 x 4 7/8 in. round corner, 1 7/16 x 7 15/16 in. square corner
------	---

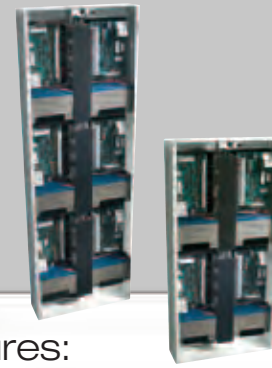


### Related Products



## Multi-Door Controller

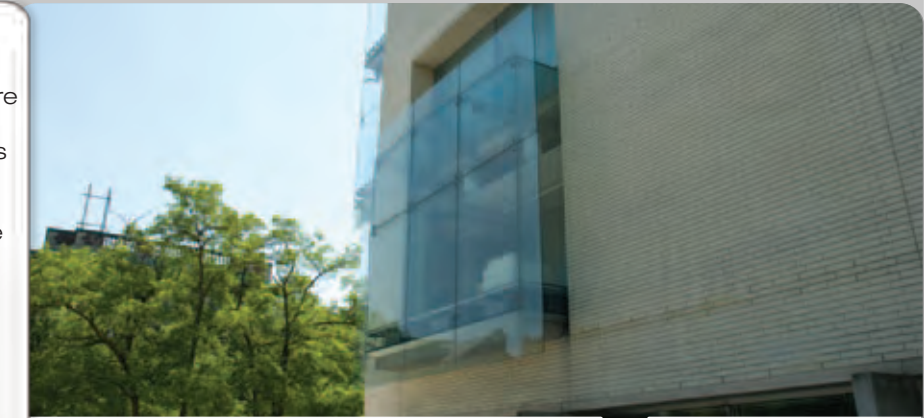
## Access Control Kits



Multi-Door Controller Kits provide all the necessary hardware components in one box to complete or extend an access control system. From powerful KT-300PCB controllers to readers and keytags, our kits have you covered. These kits are ideal for large applications where space, time, and budget are important considerations. Rather than having to install separate enclosures for each controller, the kits enable you to mount multiple controllers inside a single enclosure. Multi-Door Expansion Kits are also available to expand the system in 4-door increments.

### Features:

- Controls up to 8 or 12 doors from one enclosure (depending on model size enclosure)
- Cost-effectively consolidate multiple controllers in a single enclosure
- Integrates with EntraPass software
- Expand system in 4-door increments using the Multi-Door Expansion Kit
- Convenient, time and space saving



*“Kits that save space, time and money”*

Model Numbers:

* EK-4RDR-8	Multi-Door Controller Kit: 28 inch enclosure with door cover, 2x KT-300PCB128 (PCB) controllers, 4x P225XSF Readers, 25x ioProx Keytags. Fits up to 4 KT-300 PCB controllers.
* EK-4D-8	Multi-Door Controller Kit: 28 inch enclosure with door cover, 2x KT-300PCB128 (PCB) controllers. Fits up to 4 KT-300 PCB controllers.
* EK-4RDR-12	Multi-Door Controller Kit: 42 inch enclosure with door cover, 2x KT-300PCB128 (PCB) controllers, 4x P225XSF Readers, 25x ioProx Keytags. Fits up to 6 KT-300 PCB controllers.
* EK-4D-12	Multi-Door Controller Kit: 42 inch enclosure with door cover, 2x KT-300PCB128 (PCB) controllers. Fits up to 6 KT-300 PCB controllers.
* EK-4RDR-ADD	Multi-Door Expansion Kit: 2x KT-300PCB128 (PCB) controllers, 4x P225XSF Readers
* EK-4D-ADD	Multi-Door Expansion Kit: 2x KT-300PCB128 (PCB) controllers

Accessories:

KT-CAB3000LDR	28-inch enclosure with door cover, fits up to 4x KT-300 PCB controllers or 3x KT-400 PCB controllers
KT-CAB4000LDR	42-inch enclosure with door cover, fits up to 6x KT-300 PCB controllers or 4x KT-400 PCB controllers
** KT-MP200	4 mounting plates (15.25 x 10 cm or 6 x 4 in): KT-PC4108, KT-PC4216 &/or all KT-400 expansion modules
** KT-MP300	2 mounting plates (15.25 x 20 cm or 6 x 8 in) for KT-300 PCB and/or KT-PC4204 expansion module
** KT-MP400	1 Mounting plate (15.5 x 30 cm or 6 x 11 3/4 in) for KT-400-PCB and/or KT-NCC-PCB
** KT-MP500	1 Mounting plate (35 x 35 cm or 13 3/4 x 13 3/4 in) for KT-400-PCB and/or KT-NCC-PCB
KT-BB100 (Right) KT-BB101 (Left)	Battery bracket - 1 right hand side or 1 left hand side

\* Kits include: 2x KT-300 Accessory Kits, 4x KT-RM1 Relays, 2x Battery Brackets, 2x KT-MP300 Mounting Plates, Cabinet Lock/Keys, Tamper Switch, 2x Transformers, 2x Battery  
 \*\* All mounting plate accessories fit both 28 inch and 42 inch enclosures

### Related Products

