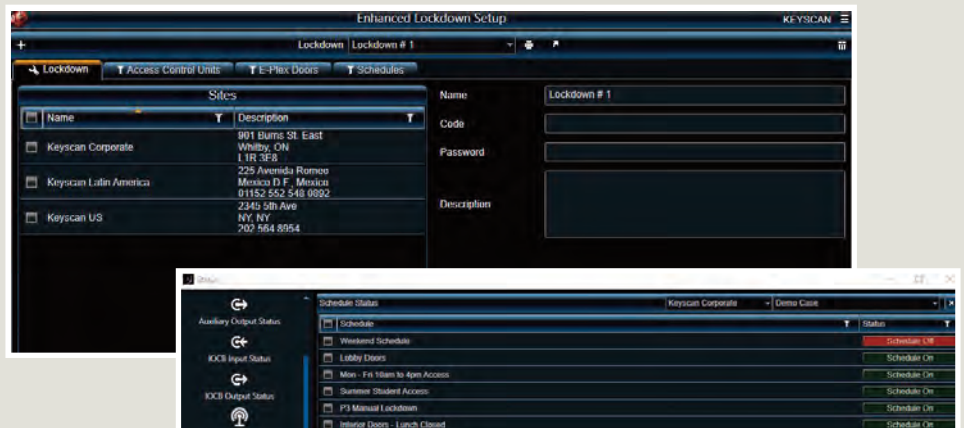


# Keyscan Aurora

## Enhanced Lockdown Feature



## Enhanced lockdown ideal for security response plans

In addition to the basic Aurora lockdown function, Keyscan Aurora Version 1.0.19 offers an enhanced lockdown feature that allows administrators to program custom network-based lockdown response scenarios.

The enhanced lockdown function is designed to:

- Lock down doors and elevator floors on any Keyscan CA & EC control unit
- Lock down any E-Plex wireless door locks
- Trigger selectable schedules to change states from either ON or OFF
- Prepare a report outlining the triggered functionality of each scenario

A light installation of prerequisite files for use and lockdown configuration is needed before deployment.

In the event of any emergency protocol, any users on the network can initiate one or more lockdown scenarios by clicking the icon on their PC desktop.

The icon represents a lockdown scenario that must be pre-configured into Keyscan Aurora software. Clicking

the icon will initiate that sequence to all entrances or elevators across any, or all, sites secured by Keyscan door and elevator floor control units on the same LAN/WAN/WLAN network.

The enhanced lockdown will function with all readers as well as 3600, 3700, 5600, 5700 and 7900 E-Plex wireless lock series.

This trusted Aurora feature offers maximum protection and is ideal for schools, laboratories or any environment where threat or hazardous material response plans are demanded - because in any emergency - time is of the essence.

In the event of deployment, the Keyscan Aurora enhanced lockdown allows all authorized users to restrict access to any group except for the 24-hr designation. This allows for an ideal group to be programmed containing unrestricted staff as well as emergency first responders.

This enhanced lockdown capability is included with Aurora Version 1.0.19 and requires a license number to unlock the features.

## Application:

The lockdown feature places a single or double-click desktop icon (pursuant to windows settings) on any designated users' PC desktop. It can be set to have a password to active or not. It can also be renamed if a user chooses. Multiple icons, each triggering different lockdown scenarios, is also possible for a hierarchy of actions mandated by emergency response plans, such as:



**Icon one:**

Perimeter Door Lockdown – Affected doors locked  
Authorized access permitted



**Icon two:**

Interior Door Lockdown – Affected doors locked  
Authorized access permitted



**Icon three:**

Full Interior & Exterior Floor Lockdown  
Affected doors and elevator floors locked down  
Access restricted for all groups and persons except anyone assigned to 24-hr group.

## Specifications:

Required software	Requires Keyscan Aurora Version 1.0.19 or higher
Required Hardware	EPROM version 9.20 or higher - PC109x or higher CA or EC door/elevator floor controllers
	EPROM version 9.20 or higher - PC115x or higher CA150 single door control unit

- This is a network-based utility, as with any network-wide feature it is recommended monthly testing be performed to ensure all hardware and software is functioning with no faults.
- Test lockdown with a client to ensure all required panels go into lockdown before programming Enhanced Lockdown functions.
- 24hr group restriction setting available if required
- Lockdown function is not compatible with any previous generation of control boards than those listed above.
- Note: reporting of ACU/ECU transactions in Lockdown is required for EC1500, EC2500 or CA150 those boards require System firmware update V9.46 or higher. All other lockdown functions will work without system firmware V9.46

Copyright © 2019 dormakaba Canada Inc. Information on this sheet is intended for general use only. dormakaba reserves the right to alter designs and specifications without notice or obligation. Printed in USA.

dormakaba Canada Inc.  
901 Burns St., E.  
Whitby, Ontario  
Canada L1N0E6  
T: 888-539-7226  
eadorders.ca@dormakaba.com