

## 150W Explosion Proof Incandescent Lamp - 230V 50/60Hz - Trunnion Mount - ATEX/IECEEx - Lamp Included

**EPL-AE.EX-MJ-CD-150W-230V-R1-TRN**

**Please see last page for supporting documentation for this product(certificates, CAD files & drawings, IES files, wiring diagrams, etc).**



### EPL-AE.EX-MJ-CD-150W-230V-R1-TRN ATEX Rated Incandescent Lamp

**Listing:** NRTL Certified for Europe and International

**Lamp Technology:** Incandescent (Lamp Included)

**Dimensions:** -

**Weight:** 21.53 lbs

**Voltage:** 230V AC, 50/60 Hz

**Total Watts:** 150W

**Lumens:** 2100

**Beam Angle:** 360°

**Lamp Base:** E27

**Amps:** 0.66A @ 230V

**Ambient Operating Temp Range:** -40 to+40/+55

**Housing Material:** Die-cast Aluminum Alloy w/ Epoxy Resin Powder Finish

**Lens Material:** Borosilicate Toughened Glass

**Mounting:** Trunnion Mount

**Terminal:** L1, N

**Hubs:** (1) M25 x 1.5 w/ Molded Plastic Cable Gland, (1) M25 w/ Stopping Plug

### Ratings/Approvals

Approved for Zone 1 and Zone 2

Approved for Zone 21 and Zone 22

Ex tb C T195 Db

Ex 2 GD Ex de C T\* Gb

Temp Rating -40Ta40/55

NRTL Certified to IEC 60079

NRTL Certified to EN 60079

CE Certified

IP66 Weatherproof

### Special Orders- Requirements

Contact us for special requirements

**Phone:** 1-214-616-6180

**Toll Free:** 1-800-369-6671

**Fax:** 1-903-498-3364

**E-mail:** [sales@larsonelectronics.com](mailto:sales@larsonelectronics.com)

**The EPL-AE.EX-MJ-CD-150W-230V-R1-TRN Explosion Proof Incandescent Fixture from Larson Electronics is a powerful lamp for ATEX-rated environments. This 150-watt fixture is compatible with 230V AC, 50/60Hz and offers 360 degrees of illumination. Constructed of die-cast aluminum alloy with an epoxy resin powder finish, the explosion proof light is compatible with trunnion mounting applications. The lamp is included with the fixture.**

The EPL-AE.EX-MJ-CD-150W-230V-R1-TRN is an ATEX-rated Incandescent fixture for explosive work sites. Equipped with a corrosion-resistant housing, this unit operates on 230V AC, 50/60 Hz. The 150-watt light features a 360-degree beam angle that is highly visible during use. This explosion proof luminary is constructed of die-cast aluminum alloy with an epoxy resin powder finish. Equipped with a borosilicate toughened glass lens, the unit features an E27 lamp holder and is ATEX rated for Zones 1, 2, 21 and 22.

**Wiring:** Cable entries are facilitated by one M25 x 1.5 hub (molded plastic cable gland and stopping plug). Terminal connections include: L1, N. A side-mounted junction box is available for seamless field installations.

**Mounting:** This Incandescent fixture is suitable for trunnion mount applications. After installation, operators can adjust the light head for proper light placement over the

target area.

**Suggested Applications:** Hazardous locations, explosive work sites, confined spaces, chemical processing, food manufacturing and more.

At Larson Electronics, we do more than meet your lighting needs. We also provide replacement, retrofit, and upgrade parts as well as industrial grade power accessories. Our craftsmen can custom build any lighting system and/or accessories to fit the unique demands of your operation. A commitment to honesty, quality, and dependability has made Larson Electronics a leader in the lighting and electronics business since 1973. Contact us today at 800-369-6671 or message [sales@larsonelectronics.com](mailto:sales@larsonelectronics.com) for more information about our custom options tailored to meet your specific industry needs.

---

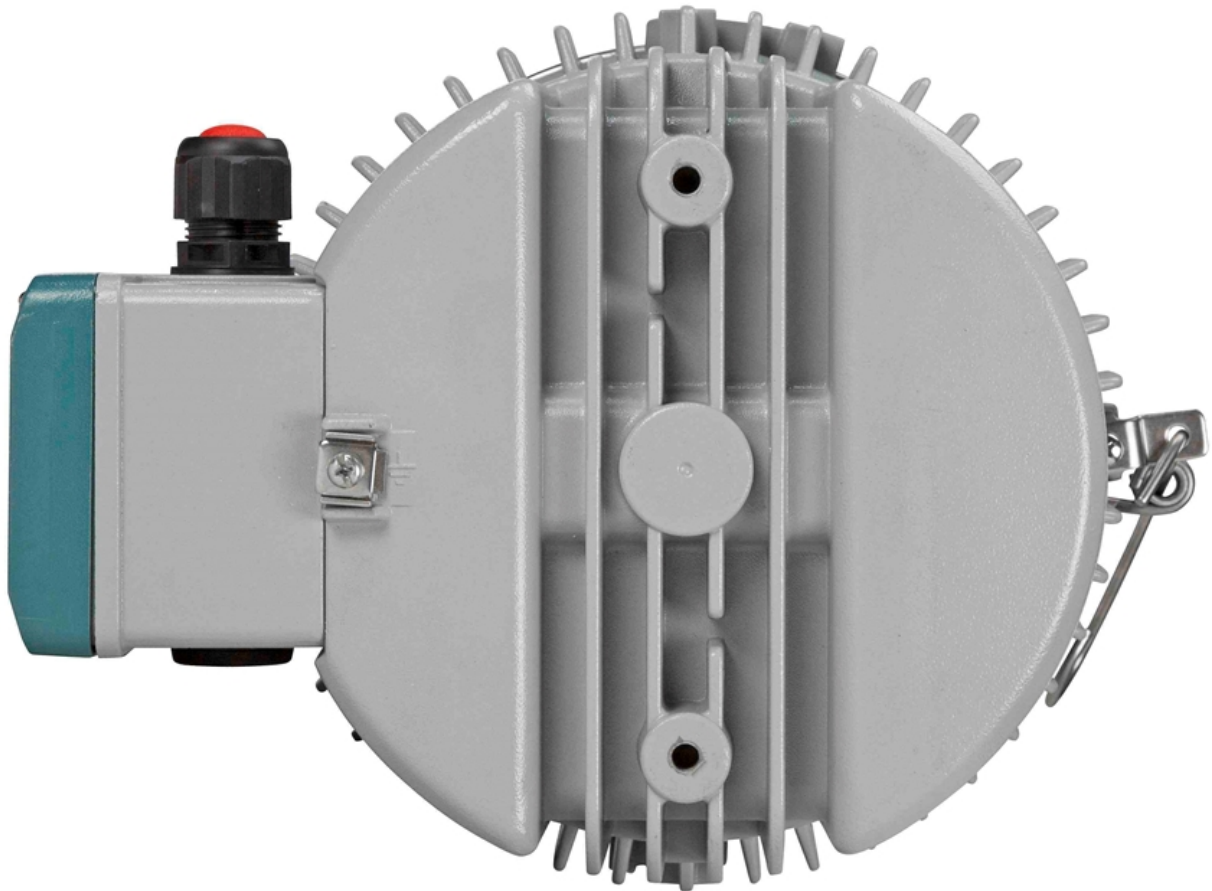


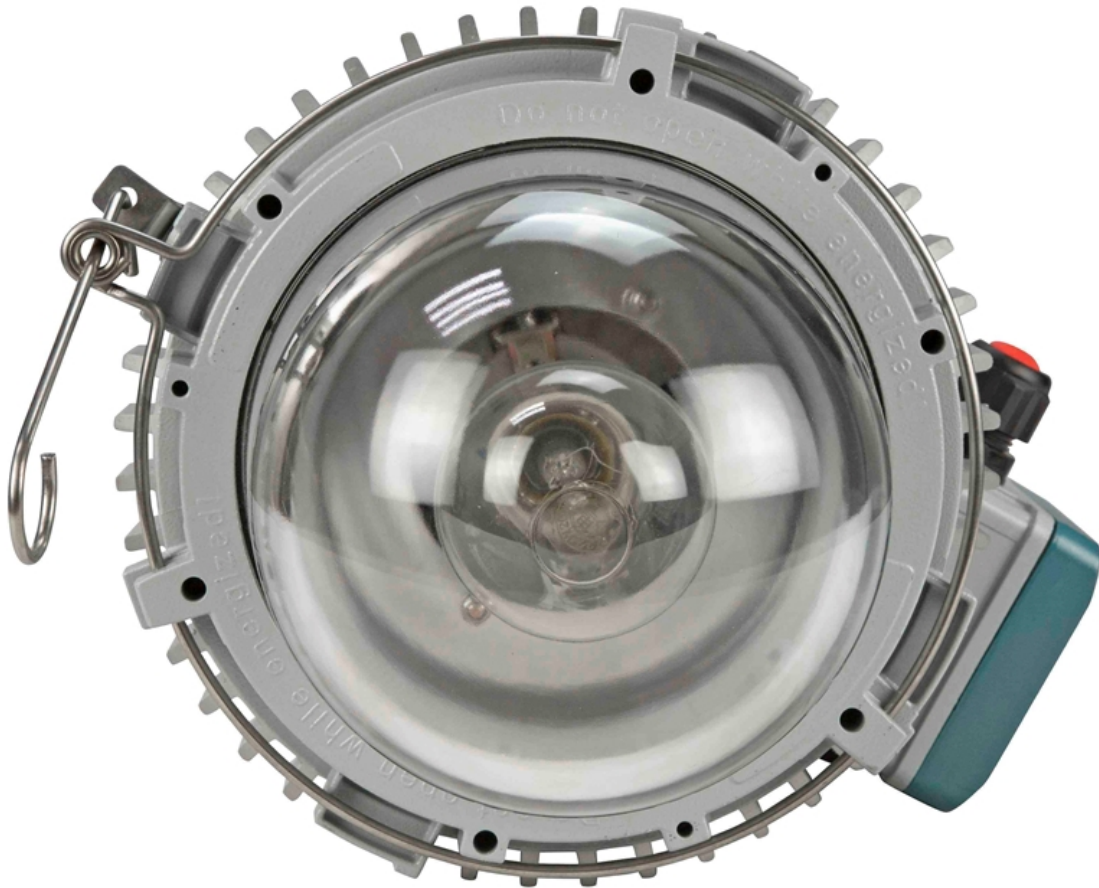
---

## Frequently Asked Questions (FAQ)









Links (Click on the below items to view):

- [CE Certificate](#)
- [Certificate 1, Misc](#)
- [IEC Ex Certificate \(International Explosion Proof\)](#)
- [RoHS Certificate \(Restriction of Hazardous Substances\)](#)
- [HigResPic1](#)
- [HigResPic2](#)
- [HigResPic3](#)
- [HigResPic4](#)
- [HigResPic5](#)
- [HigResPic6](#)
- [HigResPic7](#)
- [HigResPic8](#)
- [Video1](#)
- [ISO 9001 Certification](#)
- [Business Certificate](#)
- [Shipping Time Map](#)