

40 Watt Explosion Proof Low Profile LED Fixture - 5,400 Lumens - Class 1 & 2 Div 1 & 2 - 90° Pivoting Bracket

EPL-LP-24-LED-ALB

Please see last page for supporting documentation for this product(certificates, CAD files & drawings, IES files, wiring diagrams, etc).



EPL-LP-24-LED-ALB Explosion Proof Low Profile LED w/ Lock Bracket

Lamp Type: LED

Listing: United States, Canada, Europe, Asia

Dimensions: 30"-L x 5"-W x 3"-H

Weight: 9.5 lb

Voltage: Universal 100-277 V AC, 50/60 Hz or 12-24 V AC/DC

Total Watts: 40W

Lumens: 5,400

Luminous Efficacy: 135 Lm/W

Lamp Life: 60,000+ Hours

Color Temp: 5000K, 4500K, or 3000K

Color Rendering Index: >75 CRI

Beam Angle: 100° Horizontal, 140° Vertical

Lighting Configuration: Wide Flood Pattern

Power Efficiency: >95%

Power Factor: 0.992

Amperage: 0.33 A @ 120 V, 0.17 A @ 240 V, 0.14 A @ 277 V

Ambient Operating Temp Range: -50°C to +65°C

Operating Temp Rating: T6

Housing Material: Copper Free Cast Aluminum

Lens Material: Hardened Borosilicate Glass

Mounting: Surface Mount - 90° Pivoting Lock Bracket

Wiring: Terminal Strips

Wiring Hub: 3/4" NPT

Ratings/Approvals

Class I, Division 1, Groups C and D

Class I, Division 2, Groups A, B, C, D

Class II, Divisions 1 & 2 Groups E, F and G

Class III, Divisions 1 & 2

T6 Temperature Rating

NRTL Certified to UL 844 Ed. 13

NRTL Certified to UL 1598

Certified to C22.2 No. 137 Rev 2014

Certified to C22.2 No. 250.0

Paint Spray Booth Approved

Factory Sealed Light Fixture

90° Pivoting Lock Bracket

Special Orders - Requirements

Contact us for special requirements

Toll Free: 1-800-369-6671

Intl: 1-214-616-6180

Fax: 1-903-498-3364

E-mail: sales@larsonelectronics.com

The EPL-LP-24-LED-ALB from Larson Electronics is a Low Profile Explosion Proof LED Light Fixture w/ 90° Pivoting Lock Bracket that provides operators with a powerful and energy efficient alternative to traditional hazardous location luminaries. LED technology and compact design makes this lamp an excellent replacement upgrade option for bulky and high maintenance cost older fixtures. This explosion proof LED light has a T6 temperature rating and carries a paint spray booth, ATEX and IECEx certifications, and is approved for use in United States, Canada, Europe, and Asia markets. It is ideal for applications such as paint booths, oil rigs, offshore applications, petrochemical, manufacturing, chemical storage, water treatment centers, and food processing plants where a where flammable gases, vapors, or dusts exist or stand the potential to exist. The EPL-LP-24-LED-ALB is equipped with terminal strips for wiring as well

as a lock bracket that allows the fixture to pivot 90° after mounting.

This Class I Divisions 1 & 2, Class II Divisions 1 & 2 low profile explosion proof light fixture provides 5,400 lumens of high quality light while only drawing 40 watts. The copper free aluminum alloy body is powder coated for added durability and an attractive aesthetic appearance. Special heat dissipating design in conjunction with LED technology helps this fixture to achieve an excellent 60,000 hour rated lifespan with 80% lumen retention at the 60,000 hour mark. Light weight and a low profile make this unit an attractive alternative to larger and heavier older fixtures and requires less hardware to install.

[Click Photo to Enlarge](#)

[Click Photo to Enlarge](#)

[Click Photo to Enlarge](#)

The EPL-LP-24-LED-ALB from Larson Electronics is an integrated low profile linear explosion proof LED light fixture with a unique design. Instead of using diffused glass, optics, or reflectors to distribute the light, Larson Electronics has positioned the boards within the fixture to provide a wide area light without sacrificing quality or light output. Two offset LED assemblies within the fixture allow this explosion proof linear lamp to provide a brilliant 100° horizontal beam spread and 140° vertical beam spread while achieving a 5,400 lumen output to maintain a small form factor. The LED assembly is protected behind a tempered borosilicate glass tube that is protected by an aluminum wire guard to prevent from accident damage to the light fixture.

Measuring only 5" in width, this fixture takes up half the surface area as a standard two foot 2-lamp explosion proof fixture. The surface mount fixture's overall height with pivoting surface mount lock bracket is under 4.5", including the surface mount bracket itself, making the EPL-LP-24-LED-ALB one of the lowest profile explosion proof light fixtures on the market. When compared to our EPL-24-2L-T6HO fixture, the EPL-LP-24-LED-ALB fixture produces twice the light output while taking up less than half the surface area. The EPL-LP-24-LED-ALB is an ideal for applications with little space where low profile fixtures are required.

LED Benefits: Unlike gas burning and arc type lamps that have glass bulbs, LEDs have no filaments or fragile housings to break during operation and/or transportation. Instead of heating a small filament or using a combination of gases to produce light, light emitting diodes (LEDs) use semi-conductive materials that illuminate when electric current is applied, providing instant illumination with no warm up or cool down time before re-striking. Because there is no warm up period, this light can be cycled on and off with no reduction in lamp life.

LED lights run at significantly cooler temperatures than traditional metal halide and high pressure sodium lights and contain no harmful gases, vapors, or mercury, making them both safer and more energy efficient. No extra energy is wasted in cooling enclosed work areas due to external heat emissions from bulb type lights, and the operator risks associated with traditional lighting methods, such as accidental burns and exposure to hazardous substances contained in the glass bulbs, are eliminated. In addition, LEDs are also safer for the environment as they are 100% recyclable, which eliminates the need for costly special disposal services required with traditional gas burning and arc type lamps.

This light is universal voltage capable and is offered in multiple voltage configurations: 100-277V AC 50/60Hz for standard electrical circuits and 12-24V AC/DC for low voltate circuits. We also offer 347V AC and 480V AC single phase configurations of this LED light. This explosion proof LED light fixture is IP67 rated, dust-proof, and protected against high pressure jets and temporary submersion. The cast aluminum body and LED lamp give this light excellent durability and resistance to vibration and impacts. The housing is specially designed to dissipate heat which increases the efficiency and lifespan of the LEDs and electronics.

Wiring: These LED light fixtures are equipped with terminal strips. Electricians bring customer supplied wire to the terminal strips on the fixture for power connection. The wiring of these terminal strip equipped units must be conducted via wiring methods laid out in NFPA 70 / NEC Code Book Article 500. This unit is a factory sealed fixture.

This LED light produces 5,400 lumens with a color temperature of 5000K and a color rendering index of 75 which produces colors and details much more accurately than high pressure sodium or mercury vapor luminaries. We also offer a 3000K warm white and 4500K natural white color temperature options (longer

lead times may apply for non-standard temperatures).

Pivoting Lock Bracket: The EPL-LP-24-LED-ALB is equipped with a lock bracket that allows the fixture to pivot 90° after it is mounted. The light can be mounted either facing up or facing down depending on how it will be utilized. To pivot the fixture, operators simply remove the pin securing the bracket, pivot the bracket 90°, and reinsert the pin. This pivoting allows the fixture to lay flat against the mounting surface while also protecting the light from accidental impacts.

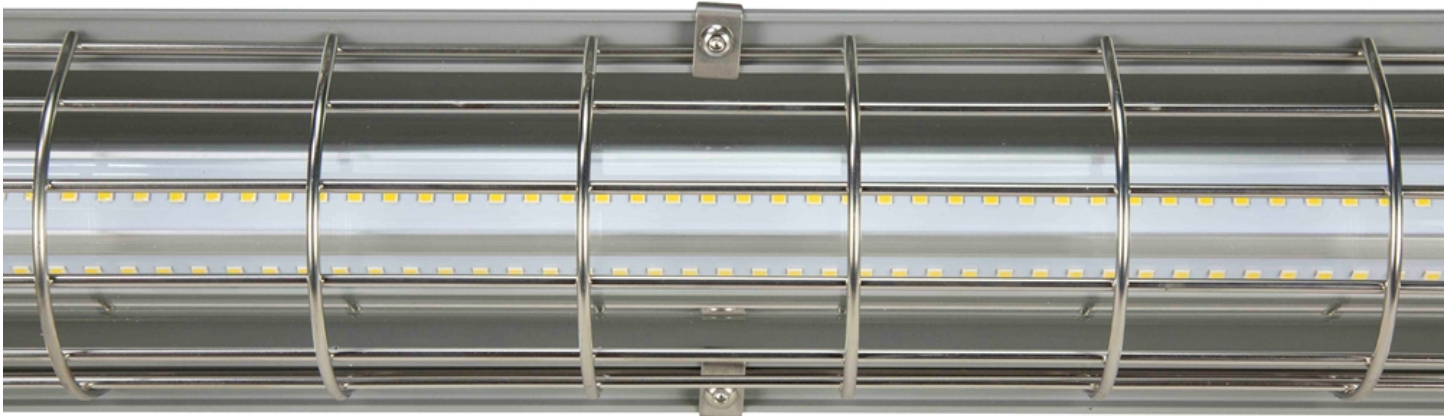
Suggested Applications: Paint spray booths, aircraft maintenance, oil drilling rigs, refineries, solvent and cleaning areas, gas processing plants, chemical manufacturing, waste water treatment plants, gas processing plants, offshore applications, oil tankers, mud tanks, sand mines, mining, cold weather applications.

At Larson Electronics, we do more than meet your lighting needs. We also provide replacement, retrofit, and upgrade parts as well as industrial grade power accessories. Our craftsmen can custom build any lighting system and/or accessories to fit the unique demands of your operation. A commitment to honesty, quality, and dependability has made Larson Electronics a leader in the lighting and electronics business since 1973. Contact us today at 800-369-6671 or message sales@larsonelectronics.com for more information about our custom options tailored to meet your specific industry needs.

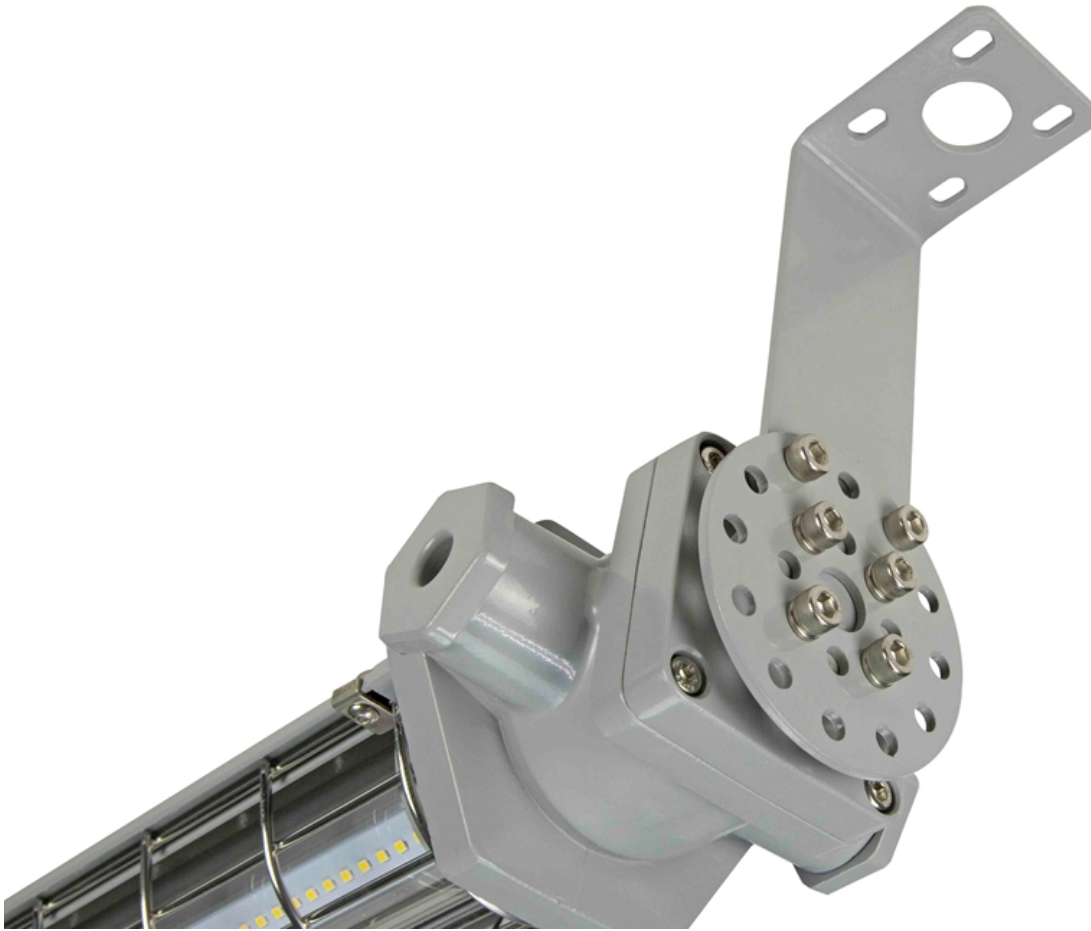


Frequently Asked Questions (FAQ)









Warranty: 60 Months

Options:

EPL-LP-24-LED-ALB-Voltage-Color Temp

Example: EPL-LP-24-LED-ALB-1227-56K

Voltage	
120-277V AC	-1227
12-24V AC/DC	-1224

Color Temp	
5600K	-56K
5000K	-50K
4500K	-45K
4000K	-40K
3500K	-35K
3000K	-30K
2700K	-27K
6500K	-65K

Links (Click on the below items to view):

- [Canadian CEC Certificate \(Commonly referred to as CSA Certificate\)](#)
- [Dimensional Drawing 2D](#)
- [IES \(Photometric File\)](#)
- [MSDS \(Material Safety Data Sheet\)](#)
- [STEP File \(3D CAD Model\)](#)
- [USA NEC Certificate \(Commonly referred to as UL Certificate\)](#)
- [HigResPic1](#)
- [HigResPic2](#)
- [HigResPic3](#)
- [HigResPic4](#)
- [HigResPic5](#)
- [HigResPic6](#)
- [HigResPic7](#)
- [HigResPic8](#)
- [Video1](#)
- [ISO 9001 Certification](#)
- [Business Certificate](#)
- [Shipping Time Map](#)