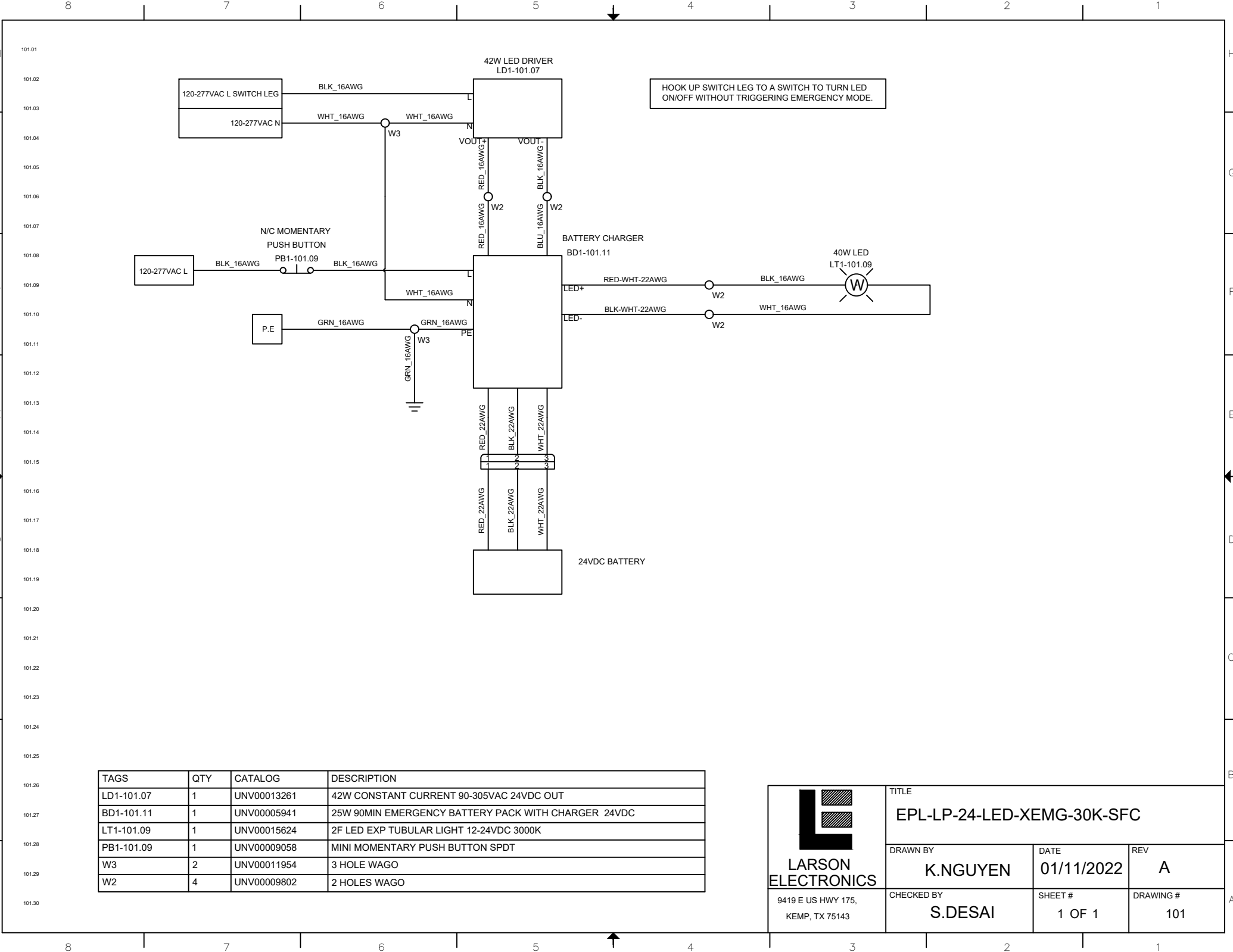



| REV | DESCRIPTION        | DATE       |
|-----|--------------------|------------|
| A   | PRODUCTION RELEASE | 01/11/2022 |

# EPL-LP-24-LED-XEMG-30K-SFC





| TAGS       | QTY | CATALOG     | DESCRIPTION   |
|------------|-----|-------------|---|
| LD1-101.07 | 1   | UNV00013261 | 42W CONSTANT CURRENT 90-305VAC 24VDC OUT            |
| BD1-101.11 | 1   | UNV00005941 | 25W 90MIN EMERGENCY BATTERY PACK WITH CHARGER 24VDC |
| LT1-101.09 | 1   | UNV00015624 | 2F LED EXP TUBULAR LIGHT 12-24VDC 3000K             |
| PB1-101.09 | 1   | UNV00009058 | MINI MOMENTARY PUSH BUTTON SPDT                     |
| W3         | 2   | UNV00011954 | 3 HOLE WAGO   |
| W2         | 4   | UNV00009802 | 2 HOLES WAGO  |

|  |  |                           |                         |
|--|--|---------------------------|-------------------------|
| <br><b>LARSON ELECTRONICS</b><br>9419 E US HWY 175,<br>KEMP, TX 75143 | TITLE<br><b>EPL-LP-24-LED-XEMG-30K-SFC</b> |                           |                         |
|  | DRAWN BY<br><b>K.NGUYEN</b>                | DATE<br><b>01/11/2022</b> | REV<br><b>A</b>         |
|  | CHECKED BY<br><b>S.DESAI</b>               | SHEET #<br><b>1 OF 1</b>  | DRAWING #<br><b>101</b> |