

Explosion Proof Switch for EPL-48-2L Series EPSW-20A

Please see last page for supporting documentation for this product(certificates, CAD files & drawings, IES files, wiring diagrams, etc).



EPSW-20A Explosion Proof Tumbler Switch

Switch Voltage Rating: 120-277 VAC

Switch Current Rating: 20 Amps- 1 HP @120 Vac & 2 HP @ 240 Vac

Grounding: Single Internal Housing Ground Screw

Configuration: Feed Through, Front Switch

Hub Qty: (2) Feed Through or (1) Dead End

Hub Size:) Feed Through or (1) Dead End

Unit Materials: Box/Receptacle- Malleable Aluminum, Sealing Chamber-Aluminum

Finish: Triple-coat—Zinc Electroplate, Chromate, Epoxy powder coat

Insulation: Integral Bushings in Conductor Openings

Mounting: External Mounting Lugs on Body

Unit Dimensions: 3.00"-W X 4.69"-D X 6.13 "-L

Switch Type: Single Pole

Ambient Operating Temp: -20°C to +50°C

Certifications - Compliance

Class 1 Division 1 & 2 Groups C, D

Class 2 Division 1 & 2 Groups E, F, G

Class 3

NEMA 7 Groups C & D

NEMA 9 Groups E, F, G

Special Orders- Requirements

Contact us for special requirements

Toll Free: 1-800-369-6671

Fax: 1-903-498-3364

E-mail: sales@larsonelectronics.com

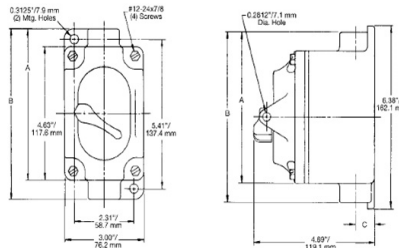
The Larson Electronics EPSW-20A Explosion Proof Feed Through Tumbler Switch is UL Listed Class 1 Division 1 & 2 and Class 2 Division 1 & 2 and provides a safe and secure method for operators to interrupt power before connecting and disconnecting portable or stationary electrical devices and equipment in hazardous locations.

This explosion proof tumbler switch is ideal for operators seeking a high quality explosion proof switch rated for use in hazardous areas designated Class 1 Division 1 and Class 2 Division 1. This explosion proof switch is rated at 20 amps-120-277 Vac and 1 HP at 120 Vac and 2 HP at 240 Vac. The entire unit is constructed of malleable aluminum and contains an internal sealing chamber constructed of copper free aluminum. This unit is easily wall mounted via integral mounting tabs at two corners of the housing and provides two 1/2" hub openings located on the top and the bottom of the housing for running electrical conductors in a feed through configuration. A bushing seal at each conductor opening prevents damage to wiring insulation.

This unit is rated to handle electrical loads of 120-277 VAC up to 20 amps and is suitable for use in environments where combustible dusts and particulates may be present.



[Click Photo to Enlarge](#)



[Click Photo to Enlarge](#)

The EPSW-20A explosion proof switch cover and housing box is constructed of malleable aluminum with all arcing devices contained within an explosion proof labyrinth switch for the highest protection possible. This design does not require external sealing fittings. Each 1/2` hub opening is fitted with an integral bushing to prevent fraying or damage to insulation. Two external mounting lugs provide simple and secure mounting of the unit to walls and flat surfaces. The unit box, switch, and face plate are all included with the product.

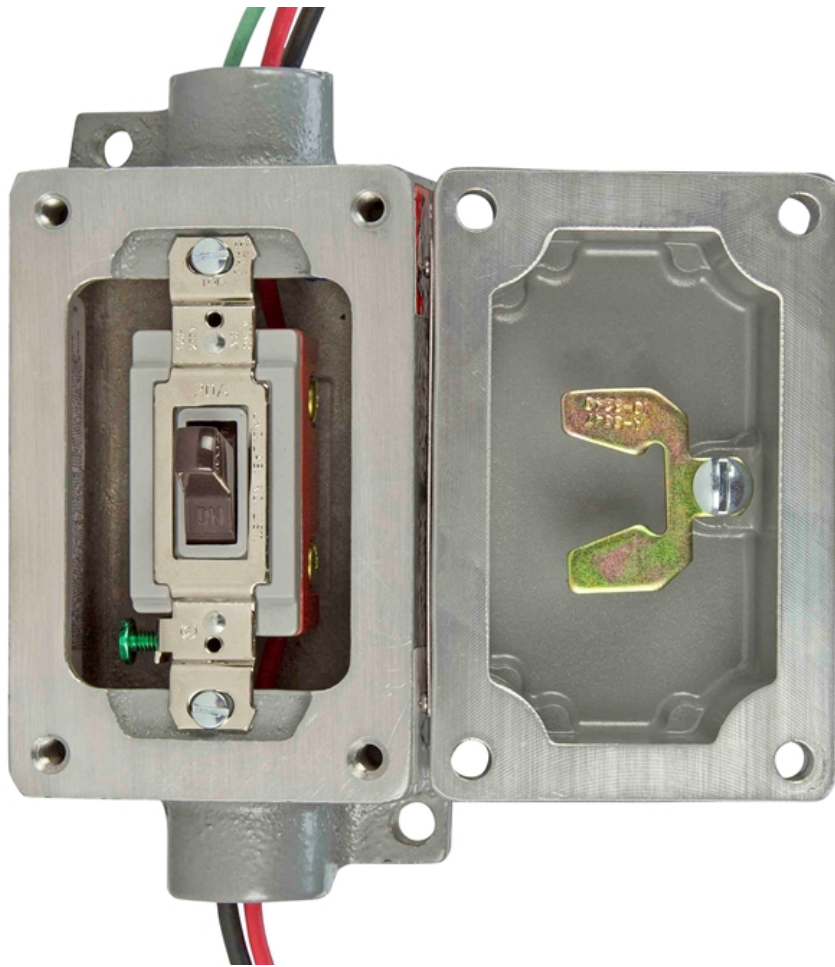
1/2" NPT tapped conduit openings are provided on the top and bottom of the unit in feed through versions while dead end versions have a single conduit hub, providing easy and secure connection to main power line supplies.

Suggested Applications: Manufacturing, Industrial, Warehouse, Lighting, Lighting, Wet areas or Locations Where Combustible Dust is Present.

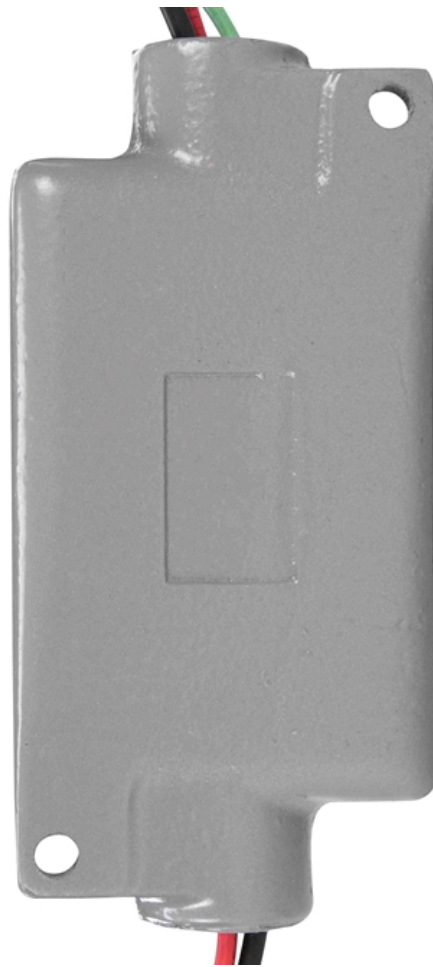


Frequently Asked Questions (FAQ)









Options:

EPSW-20A-Hub Config-Termination-Way

Example: EPSW-20A-0.5IN-FT-1P

Hub Config	
1/2 INCH	-0.5IN
3/4 INCH	-0.75IN
1 INCH	-1IN

Termination	
FEED-THRU	-FT
DEAD-END	-DE

Way	
SINGLE POLE	-1P
DUAL POLE	-2P
3-WAY	-3W

Links (Click on the below items to view):

- [Dimensional Drawing 2D](#)
- [Operations Manual](#)
- [STEP File \(3D CAD Model\)](#)
- [Wiring Diagram \(Online\)](#)
- [HigResPic1](#)
- [HigResPic2](#)
- [HigResPic3](#)
- [HigResPic4](#)
- [HigResPic5](#)
- [HigResPic6](#)
- [HigResPic7](#)
- [HigResPic8](#)
- [HigResPic9](#)
- [HigResPic10](#)
- [ISO 9001 Certification](#)
- [Business Certificate](#)
- [Shipping Time Map](#)