

## Explosion Proof Network IP Camera - 4.0MP Resolution - 20FPS - Low Light IR Array - 12V DC EXPCMR-IP-4MP-IR-12VDC

Please see last page for supporting documentation for this product(certificates, CAD files & drawings, IES files, wiring diagrams, etc).



### EXPCMR-IP-4MP-IR-12VDC Network Explosion Proof Camera

**Dimensions:** 8"L x 6"W x 13"H

**Camera Weight:** 6 lb

**Total Watts:** 5W (Max)

**Voltage:** 12V DC

**Image Sensor:** 1/3" Progressive Scan CMOS sensor

**Signal System:** NTSC

**Video Resolution:** 4.0MP (2688\*1520)

**Frame Rate:** Up to 20fps @ 2688\*1520 resolution

**Compression Type:** H.264, H.264 OVC, MJPEG

**Bit Rate:** 32Kbps - 16Mbps

**Focal Length:** 4mm

**Max Field of View:** 83°

**Shutter Speed:** 1/3s to 1/10,000s

**Min. Illumination:** 0.01 lux (Color) / 0 lux (IR)

**IR Range:** 45 ft

**Day/Night:** True D/N w/Mechanical Cut Filter

**Digital Noise Reduction:** 3D DNR

**Ethernet Interface:** RJ45

**Ethernet Speed:** 10/100

**Protocols:** TCP/IP, HTTP, HTTPS, DHCP, UDP, RTP, RTSP and more

**Remote Configuration:** Yes

**Ambient Temperature Range:** -22°F to +140°F

**Housing Materials:** Copper-free Aluminum Alloy

**Lens Material:** 3/8" thick Tempered Glass

**Mounting:** Adjustable rear-mounted handle/bracket

**Wiring Hub:** (2) 3/4" NPT

### Quick Summary

Class I, Divisions 1 & 2, Groups B, C, D

Class I, Zones 1 & 2, Groups IIB+H2, IIA

Class II, Divisions 1 & 2, Groups E, F, G

Class III, Divisions 1 & 2

Ex db IIC Gb

Ex tb IIC Gb Db IP66

NEMA 3, 4, 4X, 7 (B, C, D), 9 (E, F, G)

Main stream and two sub streams

Capable of programming unique settings per stream

ONVIF Profile S Certified

WDR (wide dynamic range) for auto adjusting

### Special Orders/Requirements

Contact us for special requirements

**Toll Free: 1-800-369-6671**

**Intl: 1-214-616-6180**

**Fax: 1-903-498-3364**

**E-mail: [sales@larsonelectronics.com](mailto:sales@larsonelectronics.com)**

**The EXPCMR-IP-4MP-IR-12VDC Network Explosion Proof Camera from Larson Electronics is a remote inspection camera specifically designed for observation in hazardous locations. This explosion proof, dust/ignition proof, weather proof and tamper resistant camera provides the operator with a live feed from inside tanks, reactors, vessels or other hazardous locations. Operated remotely from a centralized control room, this 12V DC remote inspection camera saves both time and money as well as contributing to workplace safety.**

**Camera Features:** The EXPCMR-IP-4MP-IR-12VDC Network Explosion Proof Camera features a built-in 1/3" progressive-scan CMOS image sensor that delivers up to 4.0MP resolution at 20 fps. The wide angle fixed lens with 83° field of view

covers a large area, and an integrated IR LED array provides the operator with low light and nighttime visibility up to 45'. The camera operates on 12V DC and automatically switches from full color to IR mode when visible light falls below a certain level. This remote inspection camera utilizes Advanced Infrared Technology, 120dB true Wide Dynamic Range, 3D Digital Noise Reduction and a true day/night IR-Cut filter Removal to produce clear images in variable and low light conditions. This explosion proof camera provides a crisp and clear image for everything within the 83° focal area. Total distance is dependent on mounting height and angle.

**Wiring:** Link-up with the camera is achieved via a customer provided RJ45 Ethernet cable which is ran back to the customer provided DVR system mounted outside the hazardous location.

**Recording:** To record the stream from this camera, a NVR (network video recorder) is required. Larson Electronics provides a line of explosion proof, hazardous location, and non-classified NVR's to work in conjunction with this explosion proof camera. This camera is live-view capable without any NVR system via remote access to the camera. Three streams are available, one main stream for recording and two sub streams for live viewing or additional resources. Each stream can be configured to different resolutions and frame rates.

**Mounting:** The EXPCMR-IP-4MP-IR-12VDC Network Explosion Proof Camera features an ATEX/IECEX certified copper-free aluminum alloy body and weighs a total of 6 pounds. The camera includes an adjustable rear-mounted polished stainless steel mounting bracket/handle. Additional accessory pole mounts and magnetic mounts are available separately.

**Applications:** Vessel, tank and reactor monitoring, remote observation of external facilities, monitoring of cleaning, spray patterns, mixing, foaming, reaction, and level.

At Larson Electronics, we do more than meet your lighting needs. We also provide replacement, retrofit, and upgrade parts as well as industrial grade power accessories. Our craftsmen can custom build any lighting system and/or accessories to fit the unique demands of your operation. A commitment to honesty, quality, and dependability has made Larson Electronics a leader in the lighting and electronics business since 1973. Contact us today at 800-369-6671 or message [sales@larsonelectronics.com](mailto:sales@larsonelectronics.com) for more information about our custom options tailored to meet your specific industry needs.

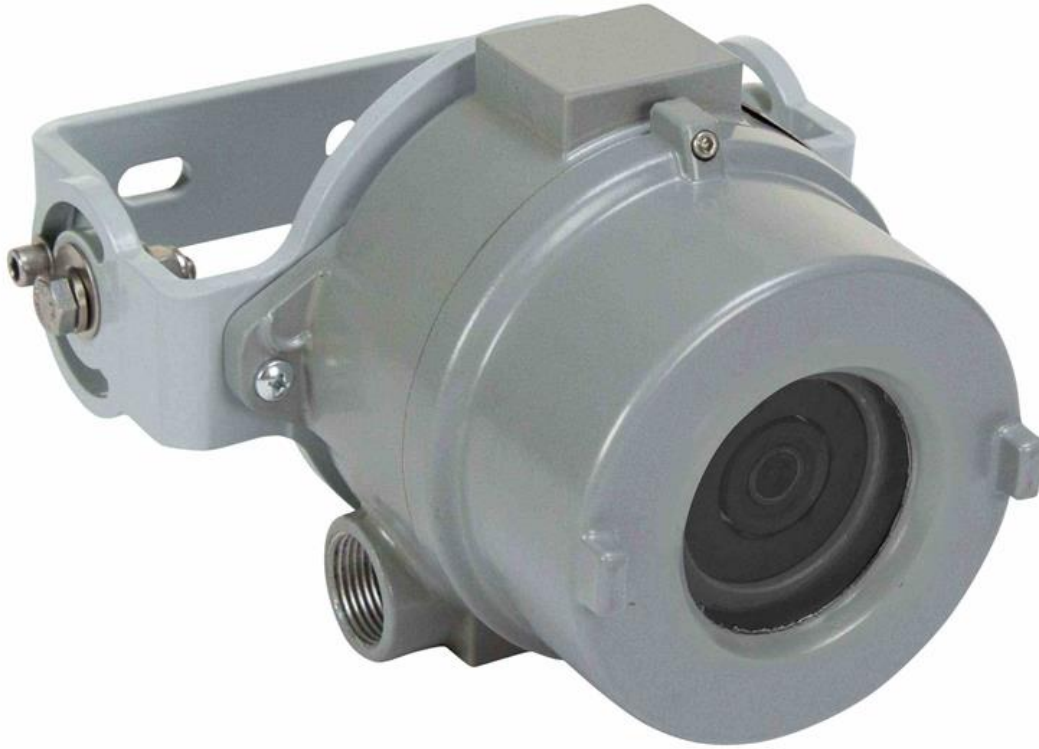
---

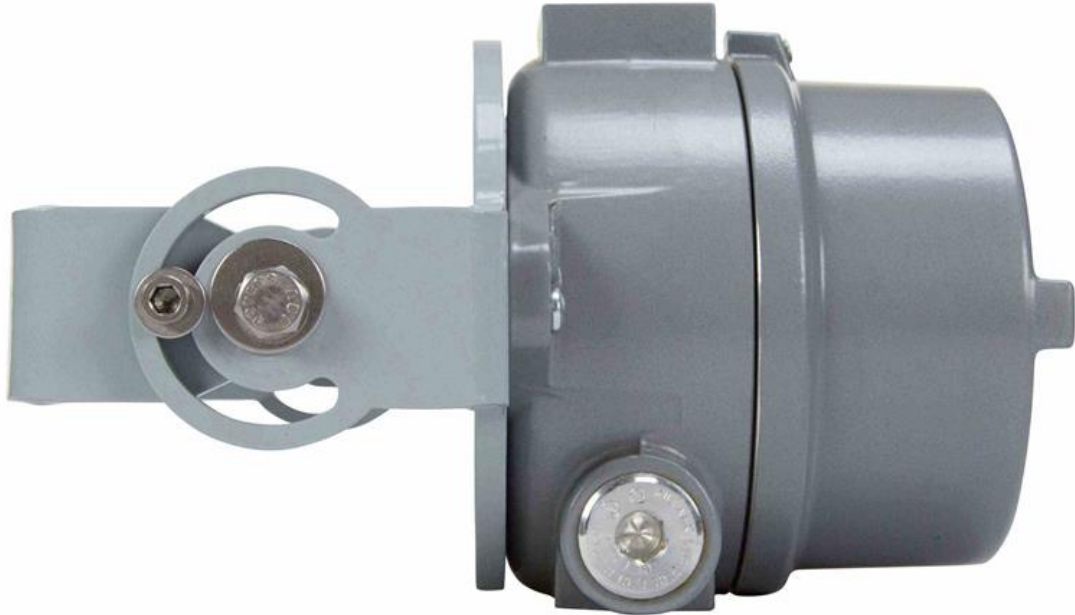


---

## Frequently Asked Questions (FAQ)









Links (Click on the below items to view):

- [ATEX Certificate \(European Explosion Proof\)](#)
- [Canadian CEC Certificate \(Commonly referred to as CSA Certificate\)](#)
- [CE Certificate](#)
- [Certificate 1, Misc](#)
- [Certificate 2, Misc](#)
- [Certificate 3, Misc](#)
- [Certificate 4, Misc](#)
- [Dimensional Drawing 2D](#)
- [IEC Ex Certificate \(International Explosion Proof\)](#)
- [MSDS \(Material Safety Data Sheet\)](#)
- [Operations Manual](#)
- [RoHS Certificate \(Restriction of Hazardous Substances\)](#)
- [SpecSheetSpanish](#)
- [USA NEC Certificate \(Commonly referred to as UL Certificate\)](#)
- [Wiring Diagram \(Online\)](#)
- [HigResPic1](#)
- [HigResPic2](#)
- [HigResPic3](#)
- [HigResPic4](#)
- [HigResPic5](#)
- [HigResPic6](#)
- [HigResPic7](#)
- [HigResPic8](#)
- [Video1](#)
- [Video2](#)
- [ISO 9001 Certification](#)
- [Business Certificate](#)
- [Shipping Time Map](#)