

## Explosion Proof 6.0MP HD Security Camera - Optical & Digital Zoom, Built-in IR Light - 120/277 AC

**EXPCMR-IP-POE-OZ-6MP-1227**

**Please see last page for supporting documentation for this product(certificates, CAD files & drawings, IES files, wiring diagrams, etc).**



### EXPCMR-IP-POE-OZ-6MP-1227 Explosion Proof Remote Observation Camera

**Dimensions:** 12.34"L x 3.96"W x 4.22"H

**Camera Weight:** 3.7 lbs

**Total Watts:** 12W (Heater Off), 18W (Heater On)

**Voltage:** 120/240V AC

**Image Sensor:** Progressive Scan CMOS

**Imager Size:** 1/1.8"

**Color:** Yes

**Signal System:** NTSC

**Connectors:** Terminal Strips

**Effective Pixels/Resolution:** 3072(H) \* 2048(V)

**Aspect Ratio:** 3:2

**Megapixels:** 6MP

**Min. Illumination:** 0.1 Lux @ F1.2 AGC On / 0 Lux (w/ Built-in IR)

**Lux:** 0 (B/W), 0.014 (Color)

**AGC Control:** Selectable

**Relative Aperture (F-stop):** F1.4

**FOV:** 94.5° (Wide) - 30.5° (Tele)

**Focus:** Auto

**Lens Iris:** DC Driven

**Shutter Speed:** 1 ~ 1/100,000 sec

**Lens Type:** Varifocal

**Lens:** 2.8-12mm Focal Length

**Day/Night:** True D/N w/Mechanical Cut Filter

**Infrared Light:** Built-in

**Digital Noise Reduction:** 3D DNR

**Dynamic Range:** 120 dB

**Video Framerate:** 6.0MP @ 24fps

**Video Offload:** MP4

**Video Streaming:** Tri

**Video Output:** CAT6 Ethernet - RJ45

**Ethernet Ports/Speed:** 1; 10/100

**Audio:** Yes

**Audio Compression:** G.711/G.722.1/G.726/MP2L2

**Audio Streaming:** Two Way

**Protocols:** TCP/IP, HTTP, HTTPS, DHCP, UDP, RTP, RTSP and More

**Bit Rate:** 32 kbps - 16 Mbps

**Compression:** H.264, H.264 OVC, MJPEG

**Signal to Ratio:** >62 dB

**Settings:** Remote Configuration, Remote Viewable, Email Notification, Event Log, Event Notification, Selectable Frame Rate, Privacy Video Block, Video Analytics Capable

### Ratings / Features

Listed for United States & Canada

Class I, Divisions 1 & 2, Groups B, C, D

Class I, Zones 1 & 2, Groups IIB+H2, IIA

Class II, Divisions 1 & 2, Groups E, F, G

Class III, Divisions 1 & 2

NEMA 3R, 4, 7 (B, C, D), 9 (E, F, G)

NRTL Listed to UL 508A

NRTL Listed to UL 1203

NRTL Listed to CSA C22.2 No 14, 25, 30

Outdoor Camera

---

**Card Reader Type:** Micro SD Card (Not Included)

**Storage:** Up to 128GB

**Language:** English

**Browser Support:** Yes

**Ambient Temperature Range:** -40°C to +60°C

**Operating Humidity:** Up to 95% (Non-condensing)

**Housing Materials:** Aluminum

**Lens Material:** Tempered Glass

**Mounting:** Adjustable Bracket

**Wiring Hub:** (2) 3/4" NPT

**Special Orders/Requirements**

Contact us for special requirements

**Toll Free: 1-800-369-6671**

**Intl: 1-214-616-6180**

**Fax: 1-903-498-3364**

**E-mail: [sales@larsonelectronics.com](mailto:sales@larsonelectronics.com)**

**The EXPCMR-IP-POE-OZ-6MP-1227 from Larson Electronics is an Explosion Proof Camera that is designed for security and remote observation in both indoor and outdoor hazardous environments. Equipped with built-in infrared, this 6.0MP HD high resolution security camera features a 150` range, 10x optical zoom with autofocus and 62x digital zoom for maximum coverage and accuracy.**

**Camera Features:** The EXPCMR-IP-POE-OZ-6MP-1227 security camera provides operators in hazardous areas with crisp 6.0MP high resolution images. A 2.8-12mm motorized lens automatically adjusts focus, providing operators with a precise 10x optical zoom and autofocus and 62x digital zoom image. This camera measures a compact 12.34" x 3.96" x 4.22" and the mounting base allows for precise aiming with 90° of vertical adjustment. This remote inspection camera utilizes a true day/night IR-Cut Filter Removal to produce clear images in variable and low light conditions.

The explosion proof unit comes with built-in infrared lights. For additional infrared illumination, an external infrared light can be used with the explosion proof device (not included). For 12-24V DC applications, we recommend the Larson Electronics 12-watt explosion surface-mount infrared LED light ([EXHL-TRN-LE3-IR-1224](#)). As an alternative, we also offer the [EXHL-TRN-LE3-IR-1227](#) for 120-240V AC applications.

The EXPCMR-IP-POE-OZ-6MP-1227 security camera is built to perform under harsh and rugged conditions. This IP67 rated waterproof unit resists the corrosive effects of weather, dust, dirt, and humidity. This Class I Divisions 1 & 2, Class II Divisions 1 & 2, Class III Divisions 1 & 2 rated camera provides property and product security while also protecting operators with its safe and reliable explosion proof and weatherproof design.

**Wiring:** This unit is designed to operate on 120-240V AC. Link-up with the camera is achieved via customer provided standard stranded cable such as CAT6 ethernet cable. The cable video/power drop cable can be routed either through the mounting surface or through a cable guide on the edge of the mounting base.

**Mounting:** The EXPCMR-IP-POE-OZ-6MP-1227 explosion proof security camera is secured to flat surfaces, such as a ceiling or wall, using an adjustable reverse pedestal style bracket. The included mounting bracket allows 90° vertical adjustment and 360° of swivel for precision aiming.

**Applications:** Vessel, tank and reactor monitoring, remote observation of external facilities, offshore and land based rigs, indoor and outdoor security, commercial buildings

At Larson Electronics, we do more than meet your lighting needs. We also provide replacement, retrofit, and upgrade parts as well as industrial grade power accessories. Our craftsmen can custom build any lighting system and/or accessories to fit the unique demands of your operation. A commitment to honesty, quality, and dependability has made Larson Electronics a leader in the lighting and electronics business since 1973. Contact us today at 800-369-6671 or message [sales@larsonelectronics.com](mailto:sales@larsonelectronics.com) for more information about our custom options tailored to meet your specific industry needs.

---



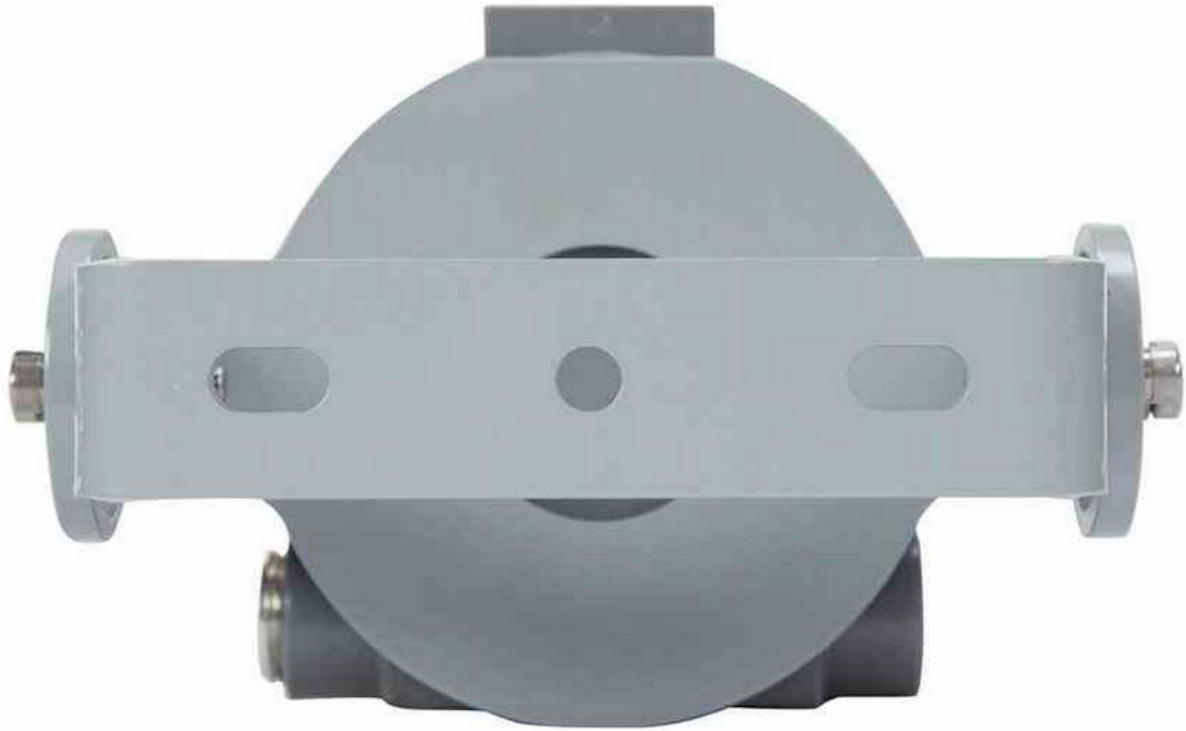
---

## Frequently Asked Questions (FAQ)









Links (Click on the below items to view):

- [ATEX Certificate \(European Explosion Proof\)](#)
- [Canadian CEC Certificate \(Commonly referred to as CSA Certificate\)](#)
- [CE Certificate](#)
- [Certificate 1, Misc](#)
- [Certificate 2, Misc](#)
- [Certificate 3, Misc](#)
- [Certificate 4, Misc](#)
- [IEC Ex Certificate \(International Explosion Proof\)](#)
- [MSDS \(Material Safety Data Sheet\)](#)
- [RoHS Certificate \(Restriction of Hazardous Substances\)](#)
- [SpecSheetSpanish](#)
- [USA NEC Certificate \(Commonly referred to as UL Certificate\)](#)
- [HigResPic1](#)
- [HigResPic2](#)
- [HigResPic3](#)
- [HigResPic4](#)
- [HigResPic5](#)
- [HigResPic6](#)
- [HigResPic7](#)
- [HigResPic8](#)
- [HigResPic9](#)
- [Video1](#)
- [Video2](#)
- [ISO 9001 Certification](#)
- [Business Certificate](#)
- [Shipping Time Map](#)