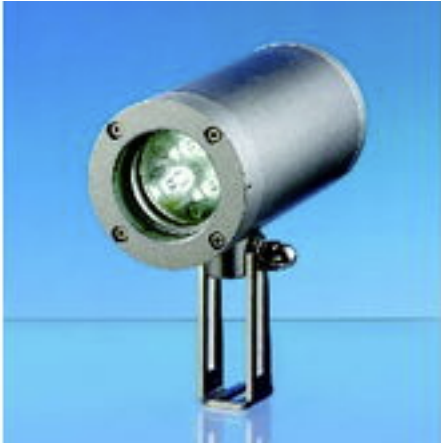


15 Watt Compact Explosion Proof LED Light - 120-230 Volts AC or 24 Volts DC - Class 1 Div 1 EXPSG-LED-15W

Please see last page for supporting documentation for this product(certificates, CAD files & drawings, IES files, wiring diagrams, etc).



EXPSG-LED-15W LED Compact Light

UL Listing: United States

Lamp Type: LED

Weight: 3.3 Lbs

Total Watts: 15

Voltage: 120-230V AC OR 24 Volts DC

Amps: 0.125 on 120V AC - 0.625 on 24V DC

Mounting: Stainless Steel Brackets

Housing: Aluminum Alloy

Wiring: M20 Cable Gland

Operating Temp Range: -20°C to 40°C ambient

LED Lamp Life: 50,000 Hours

LED Output Color: 6000K

Approvals

II 2G Ex d IIC T6 Gb

II 2D Ex tb IIIC T80°C Db

Approved Zone 1 & 2 for Gases

Approved Zone 21 & 22 for Dusts

IP67 Rated Waterproof

Special Orders- Requirements

Contact us for special requirements

Toll Free: 1-800-369-6671

Intl: 1-214-616-6180

Fax: 1-903-498-3364

E-mail: sales@larsonelectronics.com

Made in USA

The EXPSG-LED-15W Explosion Proof LED Light is ATEX approved Zone 1 & 2, Zone 21 & 22, and rated for use in wet environments. The waterproof construction, bright white output, and long lamp life of this LED fixture provides operators with high output and low maintenance operation, making this low voltage LED light an excellent upgrade from shorter lived incandescent glass lamps.

The EXPSG-LED-15W Explosion Proof LED Light is compact and powerful. This unit is equipped with a 15 watt LED lamp assembly that runs cooler and lasts far longer than traditional incandescent lamps, and produces high light output while operating on 120-230V AC high voltage or 24V DC low voltage current. This unit is approved for wet locations and ideal for use in small spaces within hazardous locations. The EXPSG-LED-15W is excellent for specific area lighting such as instruments, control panels, valve manifolds, walkways, etc.

The EXPSG-LED-15W is an excellent lighting solution for specific area lighting such as instruments, control panels, valve manifolds, walkways, etc. These sturdy lights are constructed of corrosion-resistant aluminum body with stainless steel hardware and are moisture-proof as well as explosion-proof (hazardous locations), so they are equally well suited for use in demanding installations indoors and out. The LED lamp in this light offers greater output and longer life than halogen glass lamps, which improves work area visibility and reduces the need for maintenance and bulb replacements. This LED lamp has a 50,000 hour operational life, and produces as much light as a 50 watt halogen lamp while running far cooler and

using only a fraction as much electrical power. This lamp is designed for low voltage operation and can be run from standard 120-230V AC or 24V DC current. This LED glass light is approved II 2G Ex d IIC T6 Gb, II 2D Ex tb IIIC T80°C Db, and IP67 waterproof for wet areas, making it well suited to industrial locations where water resistance and explosion proof protection is mandatory.

Mounting Brackets:

A straight stainless steel mounting bracket included standard with this light is for use on single ports from 3" to 6" in size. Angle (offset) brackets are available for 6" and larger assemblies used for single light port combinations. Brackets are adaptable to various types of mounting configurations for area lighting.

Parts, Construction and Materials

- Luminaire body: Corrosion resistant aluminum alloy, Al Mg Si 0.5, finish: RAL 9007
- Lens Holder: Unit of aluminum ring, borosilicate glass
- Brackets: Stainless Steel, 1.4301,
- Weight: 3.3 lb. (1.5 Kg)
- Cable Gland: M20 x 1.5

Electrical Connection Installation

1. Disconnect main power supply
 2. Remove side entrance cover
 3. Attach power leads to terminal block
 4. Replace cover insuring gasket (o-ring) is in place. Tighten.
 5. Connect power
- Connections to be in accordance with National Electric Code® Requirements



Frequently Asked Questions (FAQ)

Links (Click on the below items to view):

- [Dimensional Drawing 2D](#)
- [ISO 9001 Certification](#)
- [Business Certificate](#)