

## 2MP Explosion Proof HD Security Camera - C1D1, C2D1 - 3.1° to 53° FOV - PoE/IP67 EXPCMR-IP-POE-OZ-2MP-3D-53D

Please see last page for supporting documentation for this product(certificates, CAD files & drawings, IES files, wiring diagrams, etc).



### EXPCMR-IP-POE-OZ-2MP-3D-53D Explosion Proof Remote Observation Camera

**Listing:** NRTL Listed for United States & Canada

**Dimensions:** 12.34"L x 3.96"W x 4.22"H

**Camera Weight:** -

**Total Watts:** 12W (heater off), 18W (heater on)

**Voltage:** 12V DC, PoE (802.3af/at)

**Image Sensor:** Progressive Scan CMOS

**Imager Size:** 1/2.8

**Color:** Yes

**Effective Pixels/Resolution:** 1920 x 1080

**Megapixels:** 2MP

**Lux:** 0 (B/W), 0.007 (Color)

**FOV:** 3.1° to 53°

**Lens Type:** Varifocal

**Lens:** 4.7-94mm Focal Length

**Day/Night:** True D/N w/ Mechanical Cut Filter

**Infrared Light:** Built-in - 850nm

**Infrared Light Distance:** 390'

**Digital Noise Reduction:** 3D DNR

**Frame Rate:** Up to 20fps @ 2688 x 1520 Resolution

**Ethernet Ports:** (1)

**Video Offload:** MP4

**Bit Rate:** 32 Kbps - 16 Mbps

**Protocols:** TCP/IP, HTTP, HTTPS, DHCP, UDP, RTP, RTSP and more

**Compression:** H.264, H.264+, MJPEG

**Settings:** Motion Detection, Email Notification, Video Analytics, Event Log

**Card Reader Type:** Micro SD Card (Not Included)

**Storage:** Up to 128GB

**Language:** English

**Mobile App Support:** Yes - iOS, Android

**Ambient Temperature Range:** -40°C to +60°C

**Operating Humidity:** Up to 95% (Non-condensing)

**Housing Materials:** Aluminum

**Lens Material:** Tempered Glass

**Mounting:** Adjustable Bracket

**Wiring Hub:** (2) 3/4" NPT

### Ratings / Features

Class I, Divisions 1 & 2, Groups B, C, D

Class I, Zones 1 & 2, Groups IIB+H2, IIA

Class II, Divisions 1 & 2, Groups E, F, G

Class III, Divisions 1 & 2

NEMA 3R, 4, 7 (B, C, D), 9 (E, F, G)

NRTL Listed to UL 508A

NRTL Listed to UL 1203

NRTL Listed to CSA C22.2 No 14, 25, 30

Seamless Power (PoE)

### Special Orders/Requirements

Contact us for special requirements

**Toll Free: 1-800-369-6671**

**Intl: 1--214-616-6180**

**Fax: 1-903-498-3364**

**E-mail: [sales@larsonelectronics.com](mailto:sales@larsonelectronics.com)**

**The EXPCMR-IP-POE-OZ-2MP-3D-53D from Larson Electronics is an Explosion Proof Camera that is designed for security and remote observation in both indoor and outdoor hazardous environments. This**

---

**2.0MP HD high resolution security camera features auto focus and 1920 x 1080 resolution. Equipped with built-in infrared, the monitoring device supports Power over Ethernet (PoE) from data cables (no power cord needed).**

**Camera Features:** The EXPCMR-IP-POE-OZ-2MP-3D-53D security camera provides operators in hazardous areas with crisp 2.0MP high resolution images. A 2.8-12mm motorized lens automatically adjusts focus, providing operators with a precise 3.1° ~ 53° field of view. This camera measures a compact 12.34" x 3.96" x 4.22" and the mounting base allows for precise aiming with 90° of vertical adjustment. Compatible with storage up to 128GB (micro SD card not included), the remote inspection camera utilizes true D/N w/ mechanical cut filter to produce clear images in variable and low light conditions. This infrared light offers a distance of 390 feet during use.

The explosion proof unit comes with built-in infrared lights. For additional infrared illumination, an external infrared light can be used with the explosion proof device (not included). For 12-24V DC applications, we recommend the Larson Electronics 12-watt explosion surface-mount infrared LED light ([EXHL-TRN-LE3-IR-1224](#)). As an alternative, we also offer the [EXHL-TRN-LE3-IR-1227](#) for 120-240V AC applications.

The EXPCMR-IP-POE-OZ-2MP-3D-53D security camera is built to perform under harsh and rugged conditions. This IP67 rated waterproof unit resists the corrosive effects of weather, dust, dirt, and humidity. This Class I, Divisions 1 & 2; Class II, Divisions 1 & 2 and Class III, Divisions 1 & 2 rated camera provides property and product security while also protecting operators with its safe and reliable explosion proof and weatherproof design.

**Power/Wiring:** This unit is designed to operate on PoE, allowing the device to receive power directly from the data cable. Link-up with the camera is achieved via a customer provided, standard stranded cable, such as a CAT6 ethernet cable. The cable can be routed either through the mounting surface or through a cable guide at the edge of the mounting base.

Our explosion proof cameras with Power over Ethernet (PoE) features enable data transfers and power to be passed through a single Ethernet cable that is usually a Cat 3/Cat 5 cable or better. There are several types of PoE, which come with their own respective standard and maximum power to port capabilities. The IEEE 802.3af PoE standard, with a voltage range of 44.0 - 57.0V, offers 15.4W of DC power for each port. The IEEE 802.3at PoE standard, with a voltage range of 50.0 - 57.0V, provides up to 30W of DC power per port, which is ideal for surveillance cameras, antennas and network access points. The IEEE 802.3bt PoE standard, with a voltage range of 50.0 - 57.0V, provides 60W of DC power for each port. In order to utilize PoE properly, the components, such as the receiving unit and sending device, must be PoE compliant.

**Mounting:** The EXPCMR-IP-POE-OZ-2MP-3D-53D explosion proof security camera is secured to flat surfaces, such as a ceiling or wall, using an adjustable reverse pedestal style bracket. The included mounting bracket allows 90° vertical adjustment and 360° of swivel for precision aiming.

**Applications:** Vessel, tank and reactor monitoring, remote observation of external facilities, offshore and land based rigs, indoor and outdoor security, commercial buildings and more.

At Larson Electronics, we do more than meet your lighting needs. We also provide replacement, retrofit, and upgrade parts as well as industrial grade power accessories. Our craftsmen can custom build any lighting system and/or accessories to fit the unique demands of your operation. A commitment to honesty, quality, and dependability has made Larson Electronics a leader in the lighting and electronics business since 1973. Contact us today at 800-369-6671 or message [sales@larsonelectronics.com](mailto:sales@larsonelectronics.com) for more information about our custom options tailored to meet your specific industry needs.

---



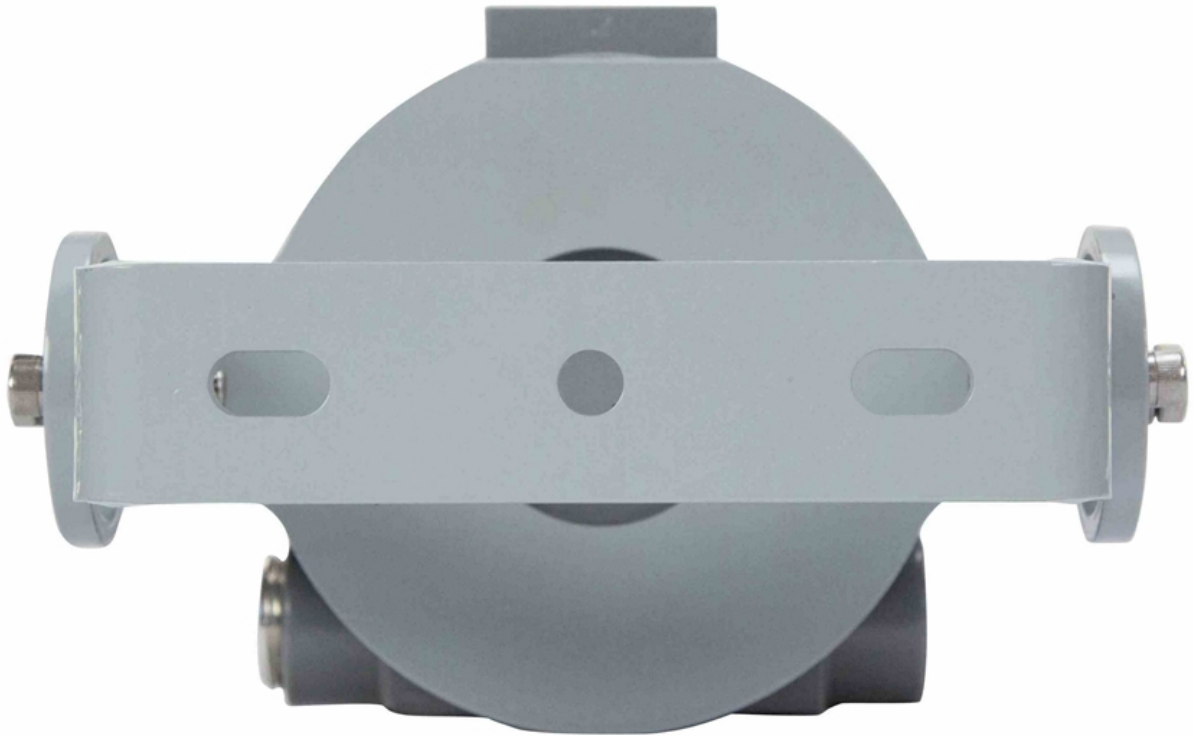
---

## Frequently Asked Questions (FAQ)









Links (Click on the below items to view):

- [Wiring Diagram \(Online\)](#)
- [HigResPic1](#)
- [HigResPic2](#)
- [HigResPic3](#)
- [HigResPic4](#)
- [HigResPic5](#)
- [HigResPic6](#)
- [HigResPic7](#)
- [HigResPic8](#)
- [HigResPic9](#)
- [Video1](#)
- [Video2](#)
- [ISO 9001 Certification](#)
- [Business Certificate](#)
- [Shipping Time Map](#)