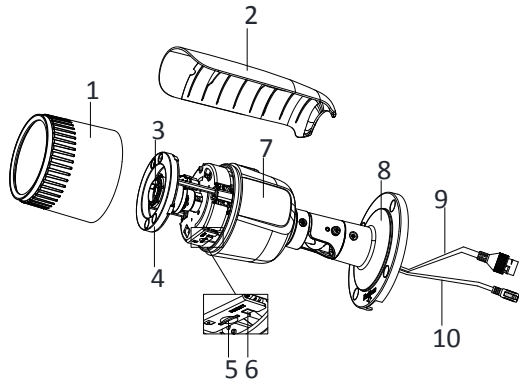


Bullet Type XIII Network Camera

Quick Installation Guide

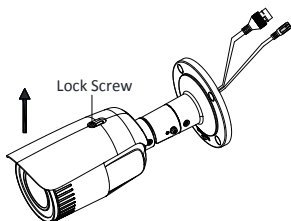


No.	Description	No.	Description
1	Front Cover	6	Reset Button
2	Sun Shield	7	Camera Body
3	Lens	8	Bracket
4	IR LED	9	Network Interface
5	Memory Card Slot	10	Power Interface

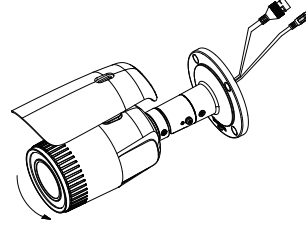
Installation Steps

1. Memory Card Installation

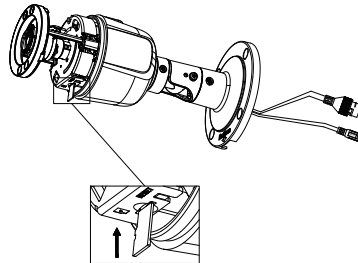
1). Loosen the lock screw to remove the sun shield.



2). Rotate the front cover counterclockwise to remove it.

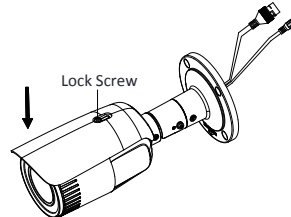


3). Insert the memory card into the memory card slot



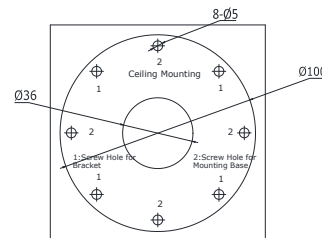
4). Rotate the front cover clockwise back to the camera and install the sun shield back.

5). Tighten the lock screw clockwise to fix the sun shield.



2. Attach the drill template (supplied) to the wall or the ceiling where the camera is to be mounted.

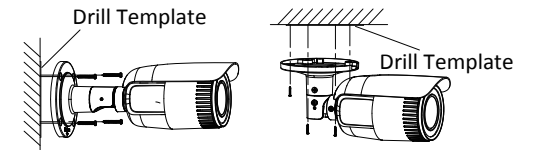
3. Drill screw holes in the wall or ceiling according to the drill template.



4. If you need to route cables through the wall (or the ceiling), cut a cable hole according to the drill template. Skip this step if you want to route the cables on the surface of the wall (or the ceiling).

5. Route the cables of the camera.

6. Secure the camera to the wall (or the ceiling) with the expansion screws.



7. Adjust the view angle.

3-axis (pan/tilt/rotation) adjusting allows adjustment for optimum camera rotation and placement. Follow the steps below to adjust the view angle.

Pan Adjustment

Steps:

1). Loosen the lock screw 1.

2). Adjust the panning position of the camera. The adjusting range is from 0° to 360°.

3). Tighten the lock screw 1.

Tilt Adjustment

Steps:

1). Loosen the lock screw 2.

2). Adjust the tilting position of the camera. The adjusting range is from 0° to 90°.

3). Tighten the lock screw 2.

Rotation Adjustment

Steps:

1). Loosen the lock screw 3.

2). Rotate the rotation position to adjust the azimuth angle of the image. The adjusting range is from 0° to 360°.

3). Tighten the lock screw 3.

