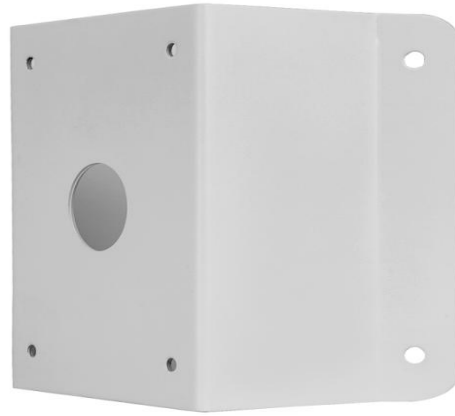


VSCM643

PTZ Dome Corner Mount



Specifications

Bracket	VSCM643
Application	Indoor or outdoor, PTZ Dome Corner installation
Dimensions(L × W × H)	215.0mmx225.0mmx122.1mm(8.5" × 8.9" x 4.8")
Weight	1.87kg(4.1lb)
Material	steel

Dimensions

