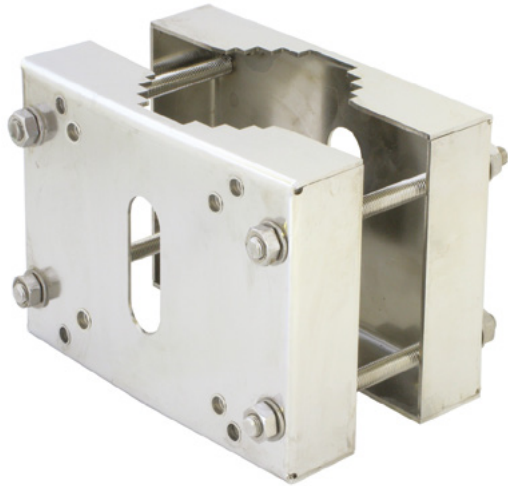


HT-E-BFP00CL

Explosion Proof Accessories Pole Adaptor



HT-E-BFP00CL

Material	Stainless Steel AISI 316L
Supported Pole Dimensions	Pole Diameter Range 3.54"(90mm) -4.72"(120mm)
Load Rating	121lbs(55kg)
Weight	9.2lbs(42kg)
Color	Electro Polished Stainless Steel finish

The HT-E-BFP00CL is designed to accompany Hanwha's explosion-proof, stainless steel fixed camera housings. Its rugged design and stainless steel construction is suitable for both offshore industrial marine and land based installations. The HT-E-BFP00CL is designed to mount the HT-E-BFW50SW wall mount & HT-E-BFW320SW wall brackets to poles of varying diameter (3.54"(90mm) -4.72"(120mm)). The HT-E-BFP00CL has M8 threaded inserts to mount the brackets and large M12 threaded rods, making installation quick and simple.

Dimensions

Unit: inch (mm)

