



1090 / 1290 Spacesaver® Bolt Locks

The Spacesaver®

Fully concealed and easily installed in 1.75" (4.44cm) frame or door stile

The Spacesaver®, first designed and patented by SDC, is a fundamental innovation in electric locking technology for access control applications. The stainless steel bolt projects at right angles to the lock mechanism, allowing installation of Spacesaver® locks, by means of a simple cutout, in virtually any standard 1.75" frame, or in most door lock stiles. With the entire lock concealed, esthetic acceptability is complete, security is greater and installation in old or new construction is fast, easy and economical.

Stainless Steel Bolt

Greater security is provided by the 0.625" (1.6cm) diameter solid stainless steel bolt. The bolt rotates freely, making attempts to tamper or cut extremely difficult.

Specification Grade Solenoid

All Spacesaver® lock solenoids are manufactured by SDC to precision specifications. SDC solenoids are capable of superior overall performance in both force and longevity, providing years of service compared to commercial grade solenoids.



- Auxiliary Locks
- Complies with "positive pressure" requirements of standard UL10C
- Listed US & Canada

Code Compliant

Classified in accordance with Uniform Building Code standard 7-2, "Fire Test for Door Assemblies"



SECURITY DOOR CONTROLS

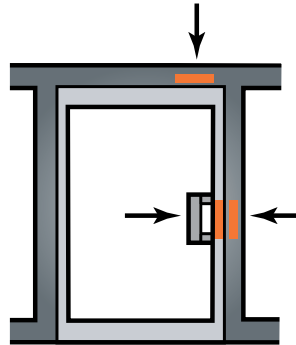
sdsecurity.com
service@sdsecurity.com

Price & Installation



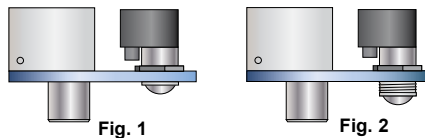
Installation

SDC Spacesaver® locks may be mounted in the frame header, side jamb or door lock stile.



Field Adjustable Auto-Relock Switch

The automatic relock switch keeps the bolt retracted while the door is open. The door depresses the ball switch assembly on closure, causing the bolt to project automatically, locking the door. In addition, the ball switch assembly is bidirectional, permitting the locks to be used on swinging and sliding doors.



The auto relock assembly is field adjustable to compensate for wide door gap. (See Figure 1 & 2.)

1091A Failsafe

The 1091A is locked when energized. Recommended for safety applications, it is intended that the door unlock automatically when power is interrupted by the access control, power failure or signal from a fire life safety system.

- Bolt Throw 0.75" (19.05mm)

1091ADL Deadlocking Failsafe

The 1091ADL is equipped with a deadlocking mechanism that prevents the bolt from being tampered with and pried to unlock. The 1091ADL has all the operational features of the 1091A (above) and is recommended for failsafe applications requiring a higher level of security.

- Bolt throw 0.75" (19.05mm)

1291A Failsecure

The 1291A is locked when de-energized and unlocked when energized. Recommended for security applications only, it is intended that the door lock when power is interrupted by a power failure.

- Bolt Throw 0.625" (15.875mm)

Protected by one or more of the following U.S. Patents: 4,021,065 4,099,752 4,634,155

5 YEAR LIMITED WARRANTY

Figure 3A, 3B, 3C, 3D: Typical Frame Header or Side Jamb Installation

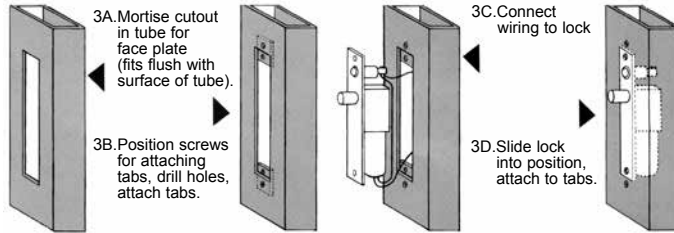
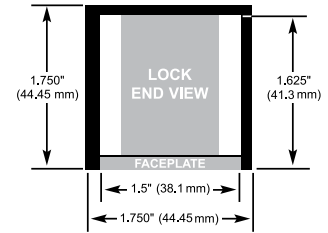
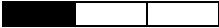


Figure 4: End View



Model



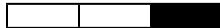
- 1091AI** Failsafe 12/24VDC
- 1091ADLI** Failsafe Deadlocking 12/24VDC
- 1291AH** Failsecure 12/24VDC

Finish



- V** 628 Clear Anodized Aluminum (std)
- Special finishes:*
- C** 605 Bright Brass
- D** 606 Dull Brass
- F** 611 Bright Bronze
- G** 612 Dull Bronze
- H** 613 Oil Rubbed Bronze
- P** 625 Bright Chrome
- Q** 626 Dull Chrome
- U** 630 Satin Stainless Steel
- Y** 335 Black Anodized

Options



- Bolt and Door Status**
 Door and lock status monitoring sensors are installed and concealed in the lock. The need for additional door and frame preparations is eliminated. Magnetic bolt status sensor is behind the faceplate to inhibit tampering.
- Applications include: Remote Door and Lock Status; Mantraps; Air/Clean Rooms; Communicating Bathrooms; Door Hold Open Alarms and CCTV Activation.
- B** Magnetic Bolt Status Switch SPDT 0.25 Amp @ 30VDC
 Indicates bolt locked and bolt unlocked.
 - D** Mechanical Door Position Switch SPDT 5 Amps @ 30VDC
 Integral to the auto relock ball switch assembly. Indicates, door closed and door open. Recommended for minimum security applications only

- AC Operation**
BR64XL Rectifier for AC operation

Specifications

- Face Plate:**
 8"L x 1-1/2"W x 1/8"D
 (203.2 x 38.1 x 3.175mm)
- Strike:**
 4"L x 1-1/2"W x 1/4"D
 (101.6 x 38.1 x 3.175mm)
- Frame Inner Dimension Requirements:**
 8"L x 1-1/2"W x 1-1/2"D (See figure 4)
 (203.2 x 38.1 x 38.1mm)
- Bolt Material:**
 Solid Stainless Steel
- Bolt Diameter:**
 5/8" (15.875mm)
- Bolt Throw:**
 1091A/1091ADL: 3/4" (19.05mm)
 1291A: 0.625" (15.875mm)
- Mounting Tabs:**
 Two aluminum mounting tabs are provided for easy lock installation. See figure 3B.
- Dual Voltage Coil:**
 0.45 Amp @ 24VDC Continuous Duty
 0.9 Amp @ 12VDC Continuous Duty