

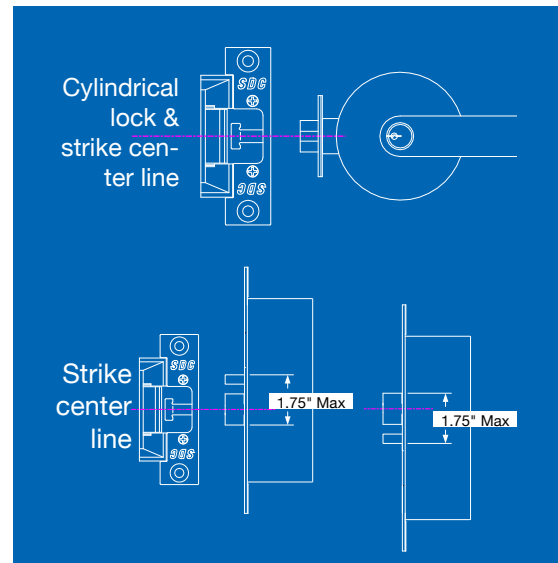
UniFLEX™ 45F Fire Rated Electric Strike/Door Release

The 45F fire-rated Grade 1 strike is specially designed with a durable, stainless steel die cast body. It is engineered with corrosion resistant components with fewer moving parts for maximum life. The standard unit includes monitoring outputs, field-selectable voltage, and field-adjustable operation (fail-secure or failsafe.) Designed for use with cylindrical and mortise locksets with 9/16" - 3/4" throw latch bolts.



FEATURES

- ANSI/BHMA A156.31, Grade 1
- Centerline Electric Strike
- For 9/16" or 3/4" latch with 1/8" door gap
- Latch bolt monitor standard
- Keeper closed & deadlocked standard
- Field selectable fail-secure - failsafe
- Field selectable voltage 12/24V AC/DC
- 1/4" Horizontal alignment adjustment
- Static strength 1500lbs.
- Low profile, 1-3/16" deep
- All stainless steel parts with durable die cast body for corrosion resistance
- Plug-in wire connectors
- Mounting tabs
- Non-handed
- Fewer moving parts for maximum life
- 630 stainless steel standard
- UL Listed 1034 Burglary Resistant
- UL 10C, 3 Hr Fire Rated (Fail-Secure only)
- U.S. Patent #7,540,542 B2



MODEL

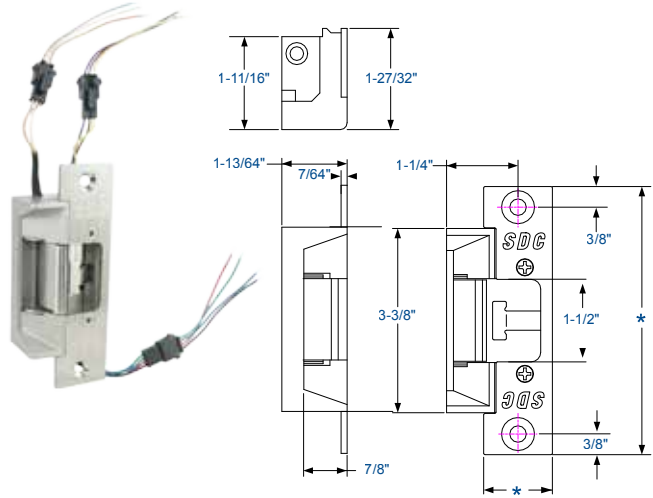
45F-4SU Fire Rated Electric Strike with 4.875" x 1.25" square corner faceplate for hollow metal frames

[for additional plates, call factory](#)



SPECIFICATIONS

Dual Voltage Coil	200/100mA @ 12/24V DC 140/70mA @ 12/24V AC
Latch Position Status (std)	SPDT, Dry 3Amp @ 30V
Keeper Closed & Deadlocked Status (std)	SPDT, Dry 3Amp @ 30V
Keeper Open/Close Status (optional)	SPDT, Dry 3Amp @ 30V
Dimension	1-1/4" W x 4-7/8" H x 1-3/16" D



OPERATIONS

Fail-Secure (Power-to-Unlock):

Unlocked when energized. Locked when de-energized and during power failure.

Application:

For non fire rated and fire rated doors (exception may not be used on stairwell doors.) May not be maintained in the unlocked (energized) state when used with fire rated doors.

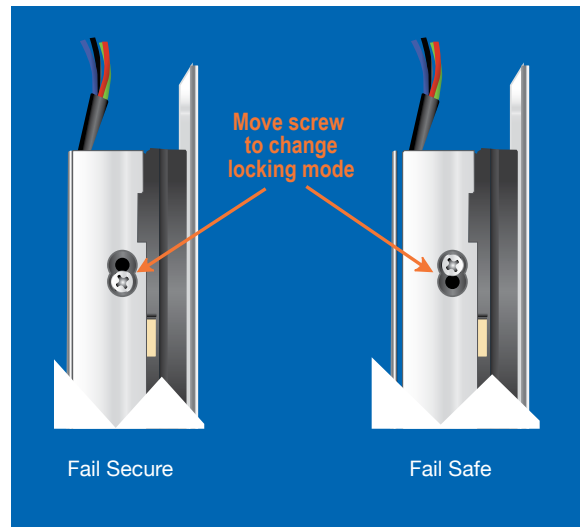
Fail-Safe (Power-to-Lock):

Locked when energized. Unlocked when de-energized and during power failure.

Application:

Non-fire rated doors only.

CAUTION: Fail-safe is NOT permitted with the UL Fire Door Accessory label.



COMPARISON CHART

	RCI	Trine	HES	Adams Rite	HES	SDC
Model	F4114	4100LB	7501	7270	4500C-LBSM	45-F
UL 10C Fire-Rated (3Hr)		✓	✓	✓	✓	✓
Dual Voltage - Field Selectable		✓			✓	✓
Latchbolt Status Monitoring		✓	✓	✓	✓	✓
Keeper Closed & Deadlocked Monitoring				✓ Deadlocked only		✓
Keeper Status Monitoring					✓	✓ (Optional)
Field Reversible Fail Secure/Safe			✓	✓	✓	✓
List Price	\$349	\$579	\$689	\$482	\$686	\$399

