

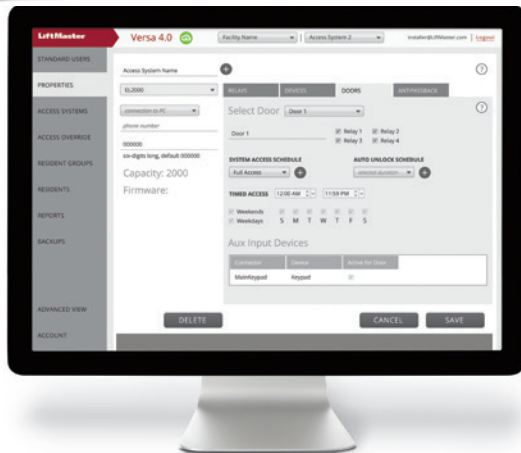
Telephone Entry/Access Control System

# EL2000SS EL25



EL2000SS

EL25G



Versa XS 4.0 Software

## Access Control Management, Now Easier than Ever

The **EL2000SS** and **EL25** Series Telephone Entry Systems all utilize our new **Versa XS 4.0** menu-driven software configuration and database management tool.

### VERSA XS 4.0 SOFTWARE FEATURES:

Simple user interface designed with you in mind

- Screens are very easy to read and understand
- Streamlines everyday user needs to quickly update information
- Help icons (?) for explanations of the features on every page
- Remote programming with multiple users
- Ability to latch/unlatch doors via software

**FREE** Cloud storage for reliable data sharing and backups

# LiftMaster®

# EL2000SS and EL25: Enhanced Versatility with a Bold New Look

EL2000SS



## ENTRY CODES

Allow for 2,000 4-digit codes to be programmed. The codes can be split up any way you choose; 500 directory codes, 1,000 card codes, 500 entry codes for example; up to 2,000 in total. The codes can be time-restricted and/or use-restricted

**Up to Four Wiegand Inputs**, if using optional plug-in module, for use with card readers, keypads or PPWR radio receiver

**Programmable Relays** provide four assignable built-in relays

**Call Forwarding and Do Not Disturb** schedules can be programmed for every resident

**Recessed, Lighted, ADA-Compliant Keypad** makes entering your PIN easy and convenient

**Call Waiting** allows the resident to answer a call from the gate or door while on another call

**Auto Sensor** input automatically dials the residence or can activate relays

## EL2000SS ADDITIONAL FEATURES:

- **5-Inch Backlit LCD Display** clearly displays up to 4 lines with 20 characters per line
- **Illuminated Call Button** is easy to see and use
- **Rugged Brushed Stainless Steel Faceplate** with stainless steel powder-coated paint-finished enclosure



EL25S

# Versa XS 4.0 Software

The Access Control Management for the EL2000SS and EL25 with New User Interface

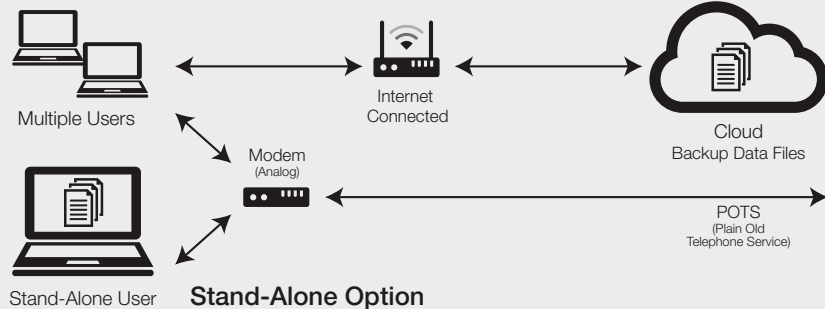
## Versa XS 4.0 Software

allows access control management for the **EL2000SS** and **EL25** with remote programming capabilities for multiple users. This system utilizes Cloud storage, and enables users to latch/unlatch doors via software, eliminating the need to call an installer to program. Versa XS 4.0 Software can be downloaded for **free** at

**LiftMaster.com/SoftwareDownload.**

## Cloud Storage Option

Data stored in the Cloud, internet connection required (multiple PCs)



## Stand-Alone Option

Data stored locally, no internet connection required (one PC only)



## Add to Your System



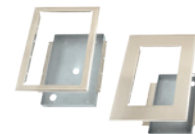
### EL25/EL2000 Wiegand Module (WOMODKT)

Supports two Wiegand-compatible remote control access devices.



### Pedestal Mounting Kit (EL2000SSPKT)

Pedestal mounting kit compatible with model EL2000SS only. The kit allows you to mount an EL2000SS unit onto a standard gooseneck pedestal. Kit includes a mounting plate with gasket and hardware.



### Trim Kits (EL2000SSTKN, EL2000SSTKW)

Compatible with model EL2000SS only. Kit includes a bezel, housing, mounting brackets and hardware. EL2000SSTKN retrofits to Dial Code, Infinity S/M. EL2000SSTKW retrofits to Infinity L and ICON 26.



### Passport Receiver (PPWR)

Security+ 2.0® receiver compatible with LiftMaster® Access Control solutions. Supports standard Wiegand protocol in two operational modes: Pass-Thru and Advanced (WOMODKT required).



### Passport MAX and Passport Lite Remote Controls (PPV3M, PPK3PHM, PPLK1-X)

LiftMaster remote controls with unique credentialed ID can be used with an access control system. Remote controls are available in three models: visor, keychain and keychain with proximity sensor. Visit LiftMaster.com to view all models.



### Single Entry Access Control Keypad and Proximity Reader (KPR2000)

A secure and vandal-resistant controller. This keypad and proximity card reader is simple to install and looks great.



### Pedestals (PED42, PED64)

42 in. pad mount (3 x 3 in.) and 64 in. in-ground (2 x 2 in.) square black powder-coated pedestal. (When used with the EL2000SS, it requires the EL2000SSPKT.)



# Telephone Entry/Access Control System

# EL2000SS EL25



FEATURE	EL2000SS	EL25G/EL25N/EL25S
<b>SYSTEM FEATURES</b>		
Event History	8,000	
Max. Directory Capacity	2,000	
Voice Communication	POTS/Filtered DSL	
Data Connectivity	Dial-up modem/Direct connect/Keypad	
Anti-Passback	Yes	
Holiday Programming	Yes	
Time Zone Feature	62 programmable time zones with three segments each	
Unlock Schedule	Yes	
<b>BASIC INPUT/OUTPUT</b>		
Max. Number of Gates/Doors of Control	4	
Wiegand Inputs	Up to 4 Wiegand inputs, with 2 (optional) plug-in modules (WOMODKT)	
Additional Gate/Door Expansion	Shared telephone line for 7 units	
<b>PANEL</b>		
Display Type	5" LCD screen; 4 display lines, 20 characters per line	—
Color	Stainless steel	EL25G grey    EL25N nickel    EL25S silver
Postal Lock	Built-in	—
Camera Ready	Yes	
Mounting Options	Surface/Flush/Gooseneck	Surface/Gooseneck (landscape or portrait)
Power Supply	120 VAC to 16 VDC transformer (included)	
Temperature Specifications	-4°F to 149°F (-20°C to 65°C)	
Warranty	2 Years	
<b>VERSA XS 4.0 SOFTWARE SPECIFICATIONS</b>		
Operating System Compatibility	Windows 10, 8.1, 8 and 7 (32 bit and 64 bit), Vista (32 bit), XP Home (32 bit), and XP Professional SP3 (32 bit). Not compatible with Apple iOS systems	
Cloud File Storage	FREE Cloud storage for reliable data sharing and backups	

## ADDITIONAL ACCESSORIES



**EL2000 LCD Display Heater (ELHTRKT)**  
Allows the EL2000 LCD display to maintain normal operation to approximately -20°F.



**DVR-Compatible Low-Lux Color Camera Kit (EL2000DVRCAMKT, EL25DVRCAMKT)**  
Optional color low-lux camera, compatible with DVR.



**Combo Keypad/Card Reader Wiegand Output (HIDWOKPRO)**  
125 kHz wall switch keypad proximity reader. Sealed for indoor or outdoor use.



Sales Support: 800.282.6225  
Technical Support Center: 800.528.2806  
LiftMasterDealer.custhelp.com/app/ask

©2016 LiftMaster. All Rights Reserved.  
845 Larch Ave., Elmhurst, IL 60126  
**LiftMaster.com**  
LMTEBRE205 5/16

CGI IS AN ISO9001 REGISTERED COMPANY



CGI reserves the right to make design or specification changes without notice.

# LiftMaster®