

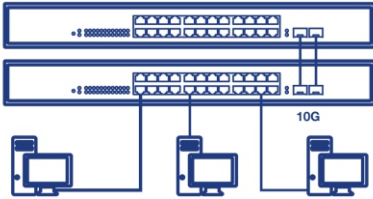


24-Port Gigabit Switch with 2 x 10G SFP+ Slots

TEG-30262 (v1.0R)

- 24 x Gigabit ports
- 2 x 10G SFP+ slots
- 88Gbps switching capacity
- 1U rack mountable (brackets included)
- Fanless Design
- Lifetime Warranty*

TRENDnet's 24-Port Gigabit Switch with 2 x 10G SFP+ Slots, model TEG-30262, provides high bandwidth performance, ease of use, and reliability. This 10G SFP switch offers two dedicated 10G SFP+ slots for high-speed network connections, providing a cost-effective solution in adding 10G link capability to an SMB network. With a sturdy metal housing and included rackmount brackets, the 10G SFP switch is well-suited for 19" 1U rack installations.



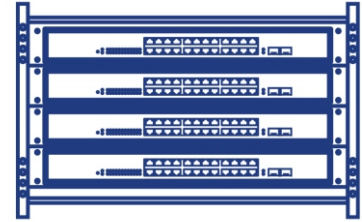
10G SFP+ Switch

Offers two dedicated 10G SFP+ slots for high-speed network connections, providing a cost-effective solution in adding 10G link capability to an SMB network.



Fanless

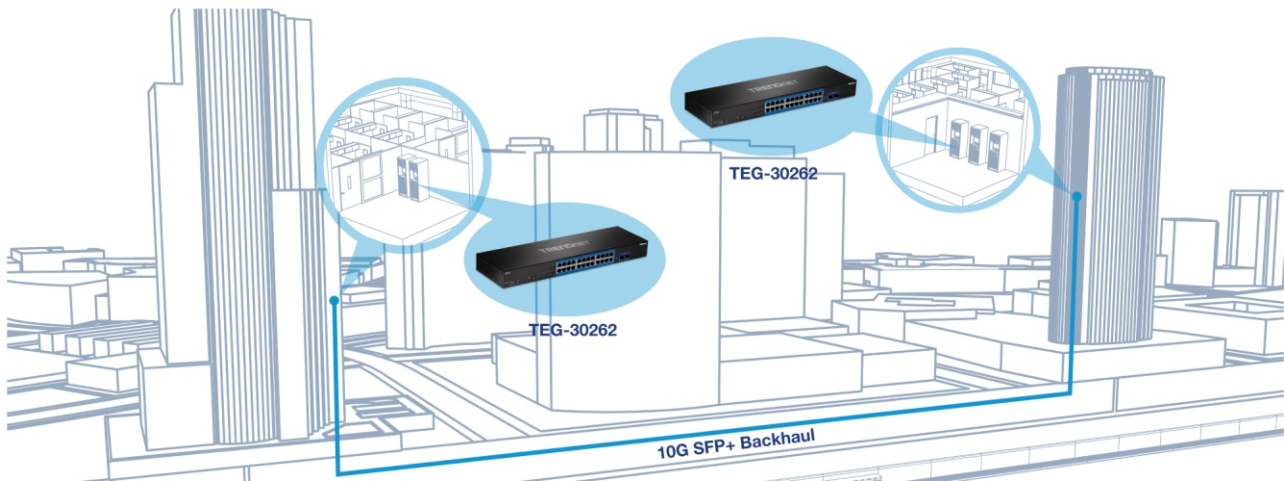
Fanless design lowers energy consumption and eliminates operating noise.



Rackmount Design

With a sturdy metal housing and included rackmount brackets, this 10G SFP switch is well-suited for 19" 1U rack installations.

Networking Solution



Ports

24 x Gigabit ports and 2 x 10G SFP+ slots for high speed connections



Housing Design

10G SFP switch with sturdy rack mountable metal housing with included mounting kit



LED Indicators

LEDs convey port status



Switching Capacity

88Gbps switching capacity



Fanless

Fanless design lowers energy consumption and eliminates operating noise



Jumbo Frame

Sends larger packets, or Jumbo Frames (up to 10KB) for increased performance

Specifications

Standards	<ul style="list-style-type: none"> • IEEE 802.3 • IEEE 802.3u • IEEE 802.3ab • IEEE 802.3x • IEEE 802.1p • IEEE 802.3ae • IEEE 802.3az
Device Interface	<ul style="list-style-type: none"> • 24 x Gigabit ports • 2 x 10G SFP+ slots • LED indicators
Data Transfer Rate	<ul style="list-style-type: none"> • Ethernet: 10Mbps (half duplex), 20Mbps (full duplex) • Fast Ethernet: 100Mbps (half duplex), 200Mbps (full duplex) • Gigabit Ethernet: 2000Mbps (full duplex) • 10 Gigabit Ethernet: 20Gbps (full duplex)
Performance	<ul style="list-style-type: none"> • Switching Capacity: 88Gbps • RAM Buffer: 1.5MB • MAC Address Table: 16K entries • Forwarding Rate: 65.5Mpps (64-byte packet size) • Jumbo Frames: 10KB
Power	<ul style="list-style-type: none"> • Input: 100 – 240V AC, 50/60Hz, internal power supply • Max. Consumption: 18.9W
Fan/Acoustics	<ul style="list-style-type: none"> • Fanless design

Operating Temperature	• 0° – 40° C (32° – 104° F)
Operating Humidity	• Max. 90% non-condensing
Dimensions	• 440 x 130 x 44mm (1.57 x 5.1 x 1.73 in.)
Weight	• 1.935kg (4.27 lbs.)
Certifications	<ul style="list-style-type: none"> • CE • FCC • ETL
Warranty	• Lifetime

PACKAGE CONTENTS

- TEG-30262
- Quick Installation Guide
- Rackmount kit
- Power cord (1.8m/6 ft.)

TRENDnet offers a lifetime warranty for all of its metal-enclosed network switches that have been purchased in the United States/Canada on or after 1/1/2015. Cooling fan and internal power supply carry a one-year warranty.

All references to speed are for comparison purposes only. Product specifications, size, and shape are subject to change without notice, and actual product appearance may differ from that depicted herein.