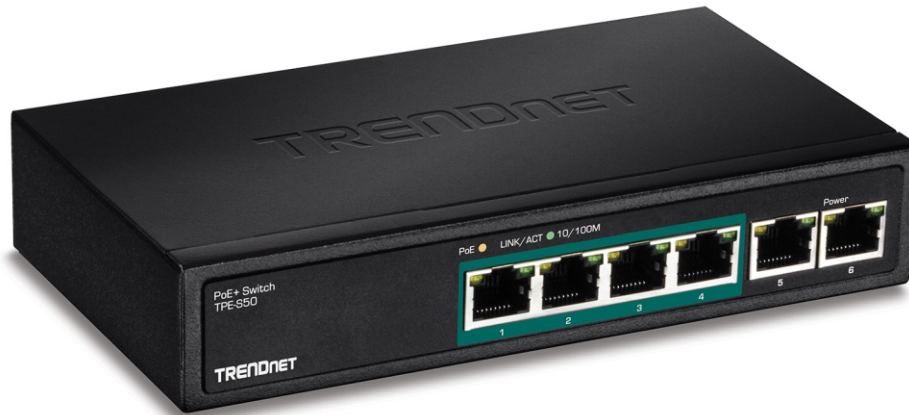




## TPE-S50 (V2.0R)

### SETUP INFO

UPC #	710931160413
Master Carton UPC #	10710931160410
Product Page	<a href="http://www.trendnet.com/products/proddetail.asp?prod=110_TPE-S50">http://www.trendnet.com/products/proddetail.asp?prod=110_TPE-S50</a>
Additional Images	<a href="http://www.trendnet.com/support/supportdetail.asp?prod=110_TPE-S50">http://www.trendnet.com/support/supportdetail.asp?prod=110_TPE-S50</a>
Alternate Product Name	6-Port Fast Ethernet PoE+ Switch, 4 x PoE+ Ports, 2 x Non-PoE Ports
Key Search Words	IEEE 802.3af, IEEE 802.3at IEEE 802.3X, PoE, 15 watts, PoE+, wall mountable, 6 ports, 4 PoE+ ports, 2 Fast Ethernet ports, 10/100Mbps, Fast Ethernet, metal, 1.2Gbps switching capacity, Power over Ethernet, edge switch, desktop switch, compact switch, fanless
Unit Dimensions	19.8 x 16.8 x 6.2cm (8 x 7 x 3 in.)
Unit Weight	0.91kg (2.04 lbs.)
Unit Qty per Case	20
Case Dimension	41 x 33 x 36cm (17 x 13 x 15 in.)
Case Weight	16.58kg (37 lbs.)
Harmonized Tarriff Code	8471801000
ECCN	5A991
Country of Origin	China
Product Availability Date	May 2018
Warranty	Lifetime Warranty*
MSRP	\$49.99

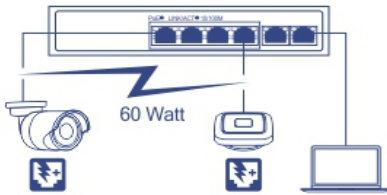


## 6-Port Fast Ethernet PoE+ Switch

### TPE-S50 (v2.0R)

- Easy installation
- 4 x Fast Ethernet PoE+ ports and 2 x Fast Ethernet ports
- 1.2Gbps switching capacity
- 60W PoE budget
- Wall mountable design
- Sturdy metal switch
- Use with TRENDnet's PoE splitter to network and power non-PoE devices
- Limited Lifetime Warranty

The 6-Port Fast Ethernet PoE+ Switch, model TPE-S50, delivers data and power over existing Ethernet cables to Power over Ethernet (PoE) devices such as access points, VoIP phones, and IP Cameras. It supports both PoE (802.3af) and PoE+ (802.3at) devices with a 60W PoE budget. Plug and play this sturdy metal switch for reliable high speed PoE networking. Its fanless design is perfect for quiet environments that require silent operation.



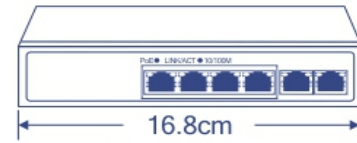
### PoE+ Power

A 60W PoE power budget supplies up to four Power over Ethernet devices.



### Fast Ethernet

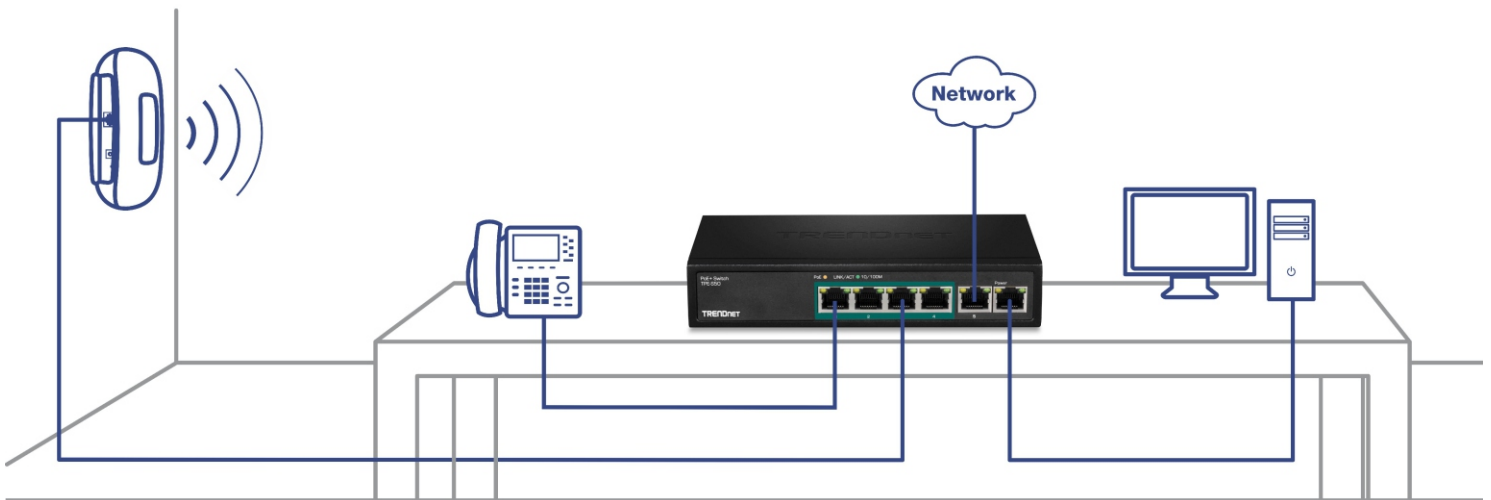
Six Fast Ethernet ports provide a 1.2Gbps switching capacity to support edge network installations.



### Compact Design

With a compact and lightweight housing design, this switch is well-suited for desktop installations. Its fanless design is perfect for quiet environments that require silent operation.

## Networking Solution



### PoE+

Supplies up to 30W of PoE+ power per PoE port with a 60W power budget



### Switching Capacity

1.2Gbps switching capacity



### LED Indicators

LED indicators convey port status



### Ports

Four Fast Ethernet PoE+ ports and two Fast Ethernet ports



### Housing

Wall mountable metal housing

## Specifications

<b>Standards</b>	<ul style="list-style-type: none"> <li>• IEEE 802.3</li> <li>• IEEE 802.3u</li> <li>• IEEE 802.3x</li> <li>• IEEE 802.3af</li> <li>• IEEE 802.3at</li> <li>• IEEE 802.3az</li> </ul>
<b>Device Interface</b>	<ul style="list-style-type: none"> <li>• 4 x 10/100Mbps PoE+ Ports</li> <li>• 2 x 10/100Mbps Ports</li> <li>• LED indicators</li> </ul>
<b>Data Transfer Rate</b>	<ul style="list-style-type: none"> <li>• Ethernet: 10Mbps (half duplex), 20Mbps (full duplex)</li> <li>• Fast Ethernet: 100Mbps (half duplex), 200Mbps (full duplex)</li> </ul>
<b>Performance</b>	<ul style="list-style-type: none"> <li>• Data Ram Buffer: 96KB</li> <li>• Switch Fabric: 1.2Gbps</li> <li>• MAC Address Table: 2K entries</li> <li>• Forwarding rate: 0.89Mpps (64-byte packet size)</li> </ul>
<b>Special Features</b>	<ul style="list-style-type: none"> <li>• GREENnet energy saving technology</li> </ul>
<b>Power</b>	<ul style="list-style-type: none"> <li>• Input: 100~240 VAC, 50/60 Hz Internal universal switching power</li> <li>• Consumption: 65 Watts (max.)</li> </ul>
<b>PoE</b>	<ul style="list-style-type: none"> <li>• PoE budget: 60 Watts</li> <li>• Mode A: Pins 1,2 for power(+) and pins 3,6 for power(-)</li> </ul>
<b>Operating Temperature</b>	<ul style="list-style-type: none"> <li>• 0 – 40 °C (32 - 104 °F)</li> </ul>
<b>Operating Humidity</b>	<ul style="list-style-type: none"> <li>• Max. 90% non-condensing</li> </ul>
<b>Dimensions</b>	<ul style="list-style-type: none"> <li>• 168 x 95 x 32 mm (6.6 x 3.7 x 1.6 in.)</li> </ul>
<b>Weight</b>	<ul style="list-style-type: none"> <li>• 504g (17.8 oz.)</li> </ul>
<b>Certifications</b>	<ul style="list-style-type: none"> <li>• CE</li> <li>• FCC</li> </ul>
<b>Warranty</b>	<ul style="list-style-type: none"> <li>• Lifetime Warranty*</li> </ul>

### PACKAGE CONTENTS

- TPE-S50
- Quick Installation Guide
- Power cord (1.2m / 4 ft.)

TRENDnet offers a limited lifetime warranty for all of its metal-enclosed network switches that have been purchased in the United States/Canada on or after 1/1/2015. Cooling fan and internal power supply carry a one-year warranty.