

Vertical Cable

Structured Cabling Solutions



Innovation
Design



Quality
Value



Authorized Distributor

2011 Volume 1



Business Process Solutions
Authorized Distributor



CAT5E Bulk Cable



RG59 Siamese Cable



CAT5E 50 Pair



CAT6 Keystone Jacks



CAT5E Keystone Jacks



HDMI to HDMI



Patch Panels



Tools



RG6 Plenum



CAT5E Direct Burial

| Bulk Wire | Page |
|--|--------|
| Audio Cable | 52, 53 |
| High Strand Audio Cable, 14/4, 41 Stranded | 54 |
| High Strand Audio Cable, 14/2, 41 Stranded | 54 |
| High Strand Audio Cable, 16/4, 65 Stranded | 53 |
| High Strand Audio Cable, 16/2, 65 Stranded | 53 |
| High Strand Audio Cable, 18/2, 41 Stranded | 54 |
| High Strand Plenum Audio Cable, 18/2, | 53 |
| High Strand Plenum Audio Cable, 16/2, | 53 |

| Security, Communication Bulk Wire | Page |
|---|------|
| 16/4 Plenum , Stranded, Shielded, Unshielded | 27 |
| 16/2 Plenum , Stranded, Shielded, Unshielded | 27 |
| 18/2 Plenum , Stranded, Shielded, Unshielded | 27 |
| 18/4 Stranded, Shielded, Unshielded | 27 |
| 18/3 Stranded, Shielded, Unshielded | 27 |
| 18/2 Stranded, Shielded, Unshielded | 27 |
| 22/8 Stranded, Shielded, Unshielded | 27 |
| 22/6 Stranded, Shielded, Unshielded | 27 |
| 22/4 Solid, Stranded, Shielded, Unshielded | 27 |
| 22/2 Solid, Stranded, Shielded, Unshielded | 27 |
| 22 AWG, 4 Conductor, Stranded | 26 |
| 22 AWG, 4 Conductor Solid | 26 |
| 22 AWG, 2 Conductor, Stranded | 25 |
| 22 AWG, 2 Conductor Solid | 25 |

| Bulk Wire | Page |
|--|-------|
| CAT3 - Plenum (UTP) | 6 |
| CAT3 - Plenum (UTP) 25, 50, 100 Pair | 6 |
| CAT3 - Solid (UTP) 25 Pair, Direct Burial | 5 |
| CAT3 - PVC Cable | 4 |
| CAT3 - PVC Cable 25, 50, 100 Pair | 5 |
| CAT5E - PVC Cable | 7 |
| CAT5E - Direct Burial (UTP) | 11 |
| CAT5E - PVC Cable 25, 50 Pair, CMXF Direct Burial | 8 |
| CAT5E - Outdoor Rated (UTP) | 11 |
| CAT5E - Plenum (UTP) | 6,7 |
| CAT5E - Shielded (STP) | 9 |
| CAT5E - Plenum/Shielded | 10 |
| CAT5E - Stranded (UTP) | 9 |
| CAT6 - Direct Burial (UTP) | 12 |
| CAT6 - Outdoor Rated (UTP) | 12 |
| CAT6 - Plenum (UTP) | 14 |
| CAT6 - Shielded (STP) | 15 |
| CAT6 - Solid (UTP) | 13 |
| CAT6 - Stranded (UTP) | 13 |
| CAT6A - Solid (UTP) | 16 |
| CAT6A - (UTP) Plenum (CMP) | 16 |
| Coaxial Cable | 16-22 |
| Composite Cable | 23-24 |
| Composite, 2 x RG6U Quad Shield with 2 x CAT5E | 23 |
| Composite, 2 x RG6U Quad Shield with 2 x CAT6 | 23 |
| Composite, 1 x RG6U Quad Shield with 1 x CAT5E | 24 |
| Composite, 1 x Cat5E (UTP) with 4C x 16AWG, PVC | 24 |
| Composite, 2 x RG6U (CCS) Quad Shield with 2 x CAT5E & 2 x Multi-Fiber | 24 |
| RG59 95% Braid for CCTV | 23 |
| RG59 Direct Burial | 21 |
| RG59 Mini Coax | 21 |
| RG59 Siamese Cable | 22 |
| RG59 Siamese, Direct Burial | 21 |
| RG59 Siamese Plenum | 22 |
| RG6 Dual Shield With Messenger | 17 |
| RG6 Dual, Stranded, Shielded | 18 |
| RG6 Quad Shield | 18 |
| RG6 Quad Shield, Direct Burial | 19 |
| RG6 Quad Shield - Plenum | 20 |
| RG6 Siamese | 19 |
| RG6 Siamese, Direct Burial | 19 |
| RG6 Standard Shield | 17 |
| RG6 Standard Shield - Plenum | 20 |
| RG6 Stranded, Direct Burial | 17 |
| RG11 Standard Shield | 20 |

| Cable Management | Page |
|----------------------------------|--------|
| Blank Patch Panels | 49 |
| Cable Ties | 51 |
| Mounting Bases | 52 |
| Racks | 50 |
| Surface Raceways and Accessories | 51, 52 |
| Wall Mount Brackets | 50 |

| Connectors | 38 |
|------------|----|
|------------|----|

| Ethernet Switches | 45 |
|-------------------|----|
|-------------------|----|

| Fiber Optic Patch Cords | Page |
|-------------------------|------|
| Multimode, Singlemode | 28 |

| Home Theater Products | Page |
|-----------------------|------|
| HDMI Digital Cables | 55 |
| HDMI, DVI Accessories | 56 |

| Keystone Jacks and Inserts | Page |
|-------------------------------|--------|
| CAT3 H-Style Jacks | 31 |
| CAT3 U-Style Jacks | 33 |
| CAT5E H-Style Jacks | 31 |
| CAT5E U-Style Jacks | 32, 34 |
| CAT6 H-Style Jacks | 31 |
| CAT5E U-Style Tool Less Jacks | 35 |
| CAT6 U-Style Jacks | 36 |
| CAT6A U-Style Jacks | 37 |
| Keystone Inserts | 38 |
| RJ45 Inline Couplers | 36 |

| Media Converters | 40, 41 |
|------------------|--------|
|------------------|--------|

| Modular Plugs | Page |
|--------------------------------|------|
| CAT3, CAT5E, CAT6, CAT6A Plugs | 30 |

| Patch Cords CAT5E, CAT6, CAT6A Shielded | 29 |
|---|----|
|---|----|

| Patch Panels | Page |
|-----------------------------|------|
| CAT5E 12, 24, 48, & 96 Port | 46 |
| CAT5E & CAT6 Mini 12 Port | 46 |
| CAT6 12, 24, 48, & 96 Port | 47 |
| CAT6A 24 Port | 48 |

| Punch Down Blocks | 39 |
|-------------------|----|
|-------------------|----|

| RJ45 Slip-On Boots | 30 |
|--------------------|----|
|--------------------|----|

| Single Gang Boxes | 39 |
|-------------------|----|
|-------------------|----|

| Surface Mount Boxes | Page |
|---------------------|------|
| Surface Mount Boxes | 40 |

| Tools and Testers | 41-42 |
|-------------------|-------|
|-------------------|-------|

| Wall Plates | Page |
|--------------------------------|------|
| Wall Plates - Keystone | 38 |
| Wall Plates - RJ11 Flush Mount | 38 |
| Wall Plates - RJ45 Flush Mount | 38 |

Category 3 - Solid (UTP)

CAT3 PVC Bulk Cable is ideal for voice and telephone applications and also used for data applications. Our Twisted Pair cable cuts and strips well and comes with a ripcord. The color-striped pairs are easily identifiable for quick and easy termination. Our cable pulls well through even in the tightest of spaces.



FEATURES AND BENEFITS:

- Suitable for Communication Applications
- Ideal for Telephony
- Category-3 Unshielded Twisted Pair (UTP) Cable
- 2-Pair, 3-Pair, 4-Pair – Easily Identified Color-Striped Pairs
- 24 AWG Solid Bare Copper Conductors
- Excellent Attenuation and Crosstalk Characteristics
- Exceeds EIA/TIA 568 B.2-1
- Sequential Length Markings on Jacket
- Supplied in 1000' Pull Boxes



| Item # | Description |
|-----------|---|
| 052-433GY | CAT3 Cable, 24 AWG, UTP, 2 Pairs, Solid, 1000', Pull Box, Gray ● |
| 052-434WH | CAT3 Cable, 24 AWG, UTP, 2 Pairs, Solid, 1000', Pull Box, White ○ |
| 052-435GY | CAT3 Cable, 24 AWG, UTP, 3 Pairs, Solid, 1000', Pull Box, Gray ● |
| 052-436WH | CAT3 Cable, 24 AWG, UTP, 3 Pairs, Solid, 1000', Pull Box, White ○ |
| 052-437GY | CAT3 Cable, 24 AWG, UTP, 4 Pairs, Solid, 1000', Pull Box, Gray ● |
| 052-438WH | CAT3 Cable, 24 AWG, UTP, 4 Pairs, Solid, 1000', Pull Box, White ○ |
| 052-440WH | CAT3 Cable, 24 AWG, UTP, 6 Pairs, Solid, 1000', Pull Box, White ○ |

Category 3 - Solid (UTP) 25, 50, 100 Pair



SPECIFICATIONS:

- UL 444, Communication Cables
- UL 1666, Riser Flame Test
- ICEA S-80-576
- Meets Category 3 requirements



| Item # | Description |
|-----------|---|
| 052-441GY | CAT3 UTP, 24 AWG, CMR, 25 Pairs, Per Foot (min. 25'), Gray ● |
| 052-442GY | CAT3 UTP, 24 AWG, CMR, 50 Pairs, Per Foot (min. 25'), Gray ● |
| 052-443GY | CAT3 UTP, 24 AWG, CMR, 100 Pairs, Per Foot (min. 25'), Gray ● |

CONSTRUCTION:

- Conductors: 24 AWG solid bare copper
- Insulation: 0.0072" nominal wall SR PVC .0345
- Pairs: 2 conductors twisted together with varying lays
- Core Assembly: 25, 50, 100 pairs cabled together with a left hand lay Jacket: 0.015" nominal wall Gray PVC
- .343 Parallel rip cord located under the jacket

Category 3 - Solid (UTP) 25 Pair, Direct Burial



CONSTRUCTION:

- Conductor AWG Solid Bare Copper
- Conductor Dia. (mm) 0.475
- Insulation PE
- 24 AWG Solid Bare Copper Conductors
- Excellent Attenuation and Crosstalk Characteristics
- Exceeds EIA/TIA 568 B.2-1
- ETL Listed
- Sequential Length Markings on Jacket
- Supplied in 1000' Wooden Spool



| Item # | Description |
|---------------|---|
| 052-441/DB/BK | CAT3 Cable, with Gel, 25 Pair, 24 AWG, UTP, Direct Burial, 1000', Pull Box, Black ● |

Category 3 - Plenum (UTP)

CAT3 Plenum Bulk Cable is used for almost any kind of voice or telephone installation as well as many data communications applications. Made from flame retardant materials, our Plenum cable is used in spaces designated for air-handling such as drop ceilings that conceal return air vents in office buildings. Our Twisted Pair cable cuts and strips well and comes with a ripcord. The color-striped pairs are easily identifiable for quick and easy termination. Our cable pulls well through even in the tightest of spaces.



FEATURES AND BENEFITS:

- Suitable for Communication Applications
- Ideal for Telephony and Security Systems
- Plenum Jacket. CMP Rated
- Category-3 Unshielded Twisted Pair (UTP) Cable
- 4-Pair – Easily Identified Color-Striped Pairs
- 24 AWG Solid Bare Copper Conductors
- Excellent Attenuation and Crosstalk Characteristics
- Exceeds EIA/TIA 568 B.2-1
- Sequential Length Markings on Jacket
- Supplied in 1000' Pull Boxes



| Item # | Description |
|--------------|---|
| 053-442/P/GY | CAT3 Cable, 24 AWG, UTP, 4 Pairs, Solid, Plenum, 1000', Gray ● |
| 053-443/P/WH | CAT3 Cable, 24 AWG, UTP, 4 Pairs, Solid, Plenum, 1000', White ○ |

Category 3 - Plenum (UTP) 25, 50, 100 Pair

Cat3 Plenum Cable is ideal for voice applications and is commonly used for telephony purposes. It has fewer twists than Cat5e which makes it easier to work with when punching it down. It also has no spinal divider like the Cat6 cable does. Cat3 plenum is mandatory to use where a plenum fire rating is required. It has a Teflon jacket rather than polyvinyl chloride (PVC) and gives off less toxic fumes in a fire. Our Cat3 Plenum cable is American made and of a much higher quality than some of the imported cable.



CONSTRUCTION:

- Conductors: 24 AWG solid bare copper
- Insulation: 0.0090" nominal wall Complex Plenum PVC .038
- Pair Assembly: Conductors are twisted to varying left hand lays
- Core Assembly: 25, 50, 100 pairs are cabled together to a left hand lay
- Jacket: 0.015" nominal wall White Complex Plenum PVC .375
- Parallel ripcord located under jacket

| Item # | Description |
|--------------|---|
| 053-444/P/WH | CAT3 UTP, 24 AWG, CMP, 25 Pair, Per Foot (min. 25'), White ○ |
| 053-445/P/WH | CAT3 UTP, 24 AWG, CMP, 50 Pair, Per Foot (min. 25'), White ○ |
| 053-446/P/WH | CAT3 UTP, 24 AWG, CMP, 100 Pair, Per Foot (min. 25'), White ○ |



Category 5E - Solid (UTP)

CAT5E 350MHz Bulk Cable is the industry standard for data communication applications. Our product is UL Listed and exceeds CAT5E 350MHz standards. Our Twisted Pair cable cuts and strips well and comes with a ripcord. The color-striped pairs are easily identifiable for quick and easy termination. Our cable pulls well through even the tightest of spaces.



FEATURES AND BENEFITS:

- High-Performance Data Communications Cable
- Suitable for 350MHz High-Speed Data Applications, Gigabit Ethernet, Fast Ethernet and 155MKey BPS TP-PMD/CDDI
- Designed for Indoor Installations, (CMR) Riser
- Category-5E Unshielded Twisted Pair (UTP) Cable
- 4-Pair – Easily Identified Color-Striped Pairs
- 24 AWG Solid Bare Copper Conductors
- Excellent Attenuation and Crosstalk Characteristics
- Exceeds EIA/TIA 568 B.2-1
- Sequential Length Markings on Jacket
- Supplied in 1000' Easy Pull Boxes



| Item # | Description |
|------------|--|
| 054-444BK | CAT5E 350MHz Cable, 24 AWG, UTP, 4 Pairs, Solid, 1000', Black |
| 054-445BL | CAT5E 350MHz Cable, 24 AWG, UTP, 4 Pairs, Solid, 1000', Blue |
| 054-447GY | CAT5E 350MHz Cable, 24 AWG, UTP, 4 Pairs, Solid, 1000', Gray |
| 054-446GR | CAT5E 350MHz Cable, 24 AWG, UTP, 4 Pairs, Solid, 1000', Green |
| 054-2392OR | CAT5E 350MHz Cable, 24 AWG, UTP, 4 Pairs, Solid, 1000', Orange |
| 054-448PR | CAT5E 350MHz Cable, 24 AWG, UTP, 4 Pairs, Solid, 1000', Purple |
| 054-449RD | CAT5E 350MHz Cable, 24 AWG, UTP, 4 Pairs, Solid, 1000', Red |
| 054-450WH | CAT5E 350MHz Cable, 24 AWG, UTP, 4 Pairs, Solid, 1000', White |
| 054-451YL | CAT5E 350MHz Cable, 24 AWG, UTP, 4 Pairs, Solid, 1000', Yellow |

Category 5E - Plenum (UTP)

CAT5E 350MHz Plenum Bulk Cable is used for data communications installations. Because it is made from flame retardant materials, our Plenum cable is used in spaces designated for air-handling such as drop ceilings that conceal return air vents in office buildings. Our Twisted Pair cable cuts and strips well and comes with a ripcord. The color-striped pairs are easily identifiable for quick and easy termination. Our cable pulls well through even in the tightest of spaces.



FEATURES AND BENEFITS:

- High-Performance Data Communications Cable
- Suitable for 350MHz High-Speed Data Applications, Gigabit Ethernet, Fast Ethernet and 155MKey BPS TP-PMD/CDDI
- Designed for Indoor Installations
- Plenum Jacket. CMP rated
- Category-5E Unshielded Twisted Pair (UTP) Cable
- 4-Pair – Easily Identified Color-Striped Pairs
- 24 AWG Solid Bare Copper Conductors
- Excellent Attenuation and Crosstalk Characteristics
- Exceeds EIA/TIA 568 B.2-1
- Sequential Length Markings on Jacket
- Supplied in 1000' Pull Boxes



| Item # | Description |
|--------------|--|
| 056-461/P/BL | CAT5E 350MHz Cable, 24 AWG, UTP, 4 Pairs, Solid, Plenum, 1000', Blue |
| 056-462/P/GR | CAT5E 350MHz Cable, 24 AWG, UTP, 4 Pairs, Solid, Plenum, 1000', Green |
| 056-463/P/GY | CAT5E 350MHz Cable, 24 AWG, UTP, 4 Pairs, Solid, Plenum, 1000', Gray |
| 056-464/P/RD | CAT5E 350MHz Cable, 24 AWG, UTP, 4 Pairs, Solid, Plenum 1000', Red |
| 056-466/P/WH | CAT5E 350MHz Cable, 24 AWG, UTP, 4 Pairs, Solid, Plenum, 1000', White |
| 056-467/P/YL | CAT5E 350MHz Cable, 24 AWG, UTP, 4 Pairs, Solid, Plenum, 1000', Yellow |

Category 5E - Plenum (UTP)



FEATURES AND BENEFITS:

- Unshielded four twisted pair Category 5e Horizontal Cable with a flame retardant PVC jacket. Extended Testing to 350 MHz
- ANSI/TIA/EIA 568C.2 Category 5e Swept to 350 MHz, ISO/IEC 11801 Category 5e, NEC Article 800, UL 910: CMP FT6, ETL Electrically Verified to ANSI/TIA/EIA 568C.2 Category 5e, C(ETL)US CMP
- Supports all category 5 applications including Ethernet 100BASE-TX, 100BASE-VG and 155 ATM.
- Particularly suited for high bandwidth applications such as 622 ATM. Wideband, and Ethernet 1000BASE-T.

US Made



| Item # | Description |
|---------------|--|
| 051-426/PL/BK | CAT5E 350MHz Cable, 24 AWG, UTP, 4 Pairs, Solid, Plenum, 1000', Black ● |
| 051-427/PL/BL | CAT5E 350MHz Cable, 24 AWG, UTP, 4 Pairs, Solid, Plenum, 1000', Blue ● |
| 051-428/PL/GR | CAT5E 350MHz Cable, 24 AWG, UTP, 4 Pairs, Solid, Plenum, 1000', Green ● |
| 051-429/PL/GY | CAT5E 350MHz Cable, 24 AWG, UTP, 4 Pairs, Solid, Plenum, 1000', Gray ● |
| 051-433/PL/OR | CAT5E 350MHz Cable, 24 AWG, UTP, 4 Pairs, Solid, Plenum, 1000', Orange ● |
| 051-430/PL/RD | CAT5E 350MHz Cable, 24 AWG, UTP, 4 Pairs, Solid, Plenum, 1000', Red ● |
| 051-431/PL/WH | CAT5E 350MHz Cable, 24 AWG, UTP, 4 Pairs, Solid, Plenum, 1000', White ○ |
| 051-432/PL/YL | CAT5E 350MHz Cable, 24 AWG, UTP, 4 Pairs, Solid, Plenum, 1000', Yellow ● |

Category 5E - 25, 50 Pair Power Sum (UTP)

CAT5E 25 Pair is ideal for Gigabit Ethernet (1000Base-T), Video to the Desktop, Multimedia, High speed Voice/Data applications, ISDN, 55/155 MKey BPS ATM, 100Base-TX, 100Base-T, 100Base VG-AnyLan.



CONSTRUCTION:

- Conductors: 24 AWG Solid Bare Copper per ASTM B-3
- Insulation: Polyethylene Nominal OD = .037"
- Pair Assembly: Color Coded Conductors twisted to varying lays
- Cable Assembly: 25 Pairs cabled to form round core
- Jacket: Flame Retardant PVC Nominal OD = .510"
- Ripcord: Ripcord provided under jacket (Sequential Footage Marker Provided)

| Item # | Description |
|------------|--|
| 054-454/BL | CAT5E 25 Pair Power Sum, PVC Jacket, AWG 24, Solid BC, Blue ● |
| 054-453/GY | CAT5E 25 Pair Power Sum, PVC Jacket, AWG 24, Solid BC, Gray ● |
| 054-452/WH | CAT5E 25 Pair Power Sum, PVC Jacket, AWG 24, Solid BC, White ○ |
| 054-455/BL | CAT5E 50 Pair Power Sum, PVC Jacket, AWG 24, Solid BC, Blue ● |
| 054-456/WH | CAT5E 50 Pair Power Sum, PVC Jacket, AWG 24, Solid BC, White ○ |

NEW PRODUCTS

| Item # | Description |
|-----------------|--|
| 059-488/CMXF25P | Cat5E, CMXF, Direct Burial, 25 Pair, AWG 24, Black ● |



Category 5E - Stranded (UTP)

CAT5E 350MHz Stranded Cable is the best cable to use for short runs or for constructing patch cables. It's constructed to be able to bend and twist frequently while still maintaining signal integrity. Our Twisted Pair cable cuts and strips well and comes with a ripcord. The color-striped pairs are easily identifiable for quick and easy termination. Our cable pulls well through even in the tightest of spaces.



| Item # | Description |
|----------------|---|
| 058-476/ST/BK | CAT5E 350MHz, 24 AWG, UTP, 4 Pairs, Stranded, 1000', Black ● |
| 058-477/ST/BL | CAT5E 350MHz, 24 AWG, UTP, 4 Pairs, Stranded, 1000', Blue ● |
| 058-479/ST/GY | CAT5E 350MHz, 24 AWG, UTP, 4 Pairs, Stranded, 1000', Gray ● |
| 058-478/ST/GR | CAT5E 350MHz, 24 AWG, UTP, 4 Pairs, Stranded, 1000', Green ● |
| 058-1936/ST/OR | CAT5E 350MHz, 24 AWG, UTP, 4 Pairs, Stranded, 1000', Orange ● |
| 058-480/ST/PR | CAT5E 350MHz, 24 AWG, UTP, 4 Pairs, Stranded, 1000', Purple ● |
| 058-481/ST/RD | CAT5E 350MHz, 24 AWG, UTP, 4 Pairs, Stranded, 1000', Red ● |
| 058-482/ST/WH | CAT5E 350MHz, 24 AWG, UTP, 4 Pairs, Stranded, 1000', White ○ |
| 058-483/ST/YL | CAT5E 350MHz, 24 AWG, UTP, 4 Pairs, Stranded, 1000', Yellow ● |

Category 5E - Shielded (STP)

CAT5E 350MHz Shielded Cable is vital for installations in interference prone areas. Our Twisted Pair cable cuts and strips well and comes with a ripcord. The color-striped pairs are easily identifiable for quick and easy termination. Our cable pulls well through even in the tightest of spaces.



| Item # | Description |
|--------------|--|
| 057-468/S/BK | CAT5E 350MHz Cable, Solid, 24 AWG, STP, 4 Pairs, 1000', Black ● |
| 057-469/S/BL | CAT5E 350MHz Cable, Solid, 24 AWG, STP, 4 Pairs, 1000', Blue ● |
| 057-471/S/GY | CAT5E 350MHz Cable, Solid, 24 AWG, STP, 4 Pairs, 1000', Gray ● |
| 057-470/S/GR | CAT5E 350MHz Cable, Solid, 24 AWG, STP, 4 Pairs, 1000', Green ● |
| 057-473/S/RD | CAT5E 350MHz Cable, Solid, 24 AWG, STP, 4 Pairs, 1000', Red ● |
| 057-474/S/WH | CAT5E 350MHz Cable, Solid, 24 AWG, STP, 4 Pairs, 1000', White ○ |
| 057-475/S/YL | CAT5E 350MHz Cable, Solid, 24 AWG, STP, 4 Pairs, 1000', Yellow ● |

FEATURES AND BENEFITS:

- High-Performance Data Communications Cable
- Suitable for 350MHz High-Speed Data Applications, Gigabit Ethernet, Fast Ethernet and 155MKey BPS TP- PMD/CDDI
- Designed for Indoor Installations
- Category-5E Unshielded Twisted Pair (UTP) Cable
- 4-Pair – Easily Identified Color-Striped Pairs
- 24 AWG Stranded Bare Copper Conductors
- Excellent Attenuation and Crosstalk Characteristics
- Exceeds EIA/TIA 568 B.2-1
- Sequential Length Markings on Jacket
- Supplied in 1000' Easy Pull Boxes



FEATURES AND BENEFITS:

- High-Performance Data Communications Cable for High Interference Environment
- Suitable for 350MHz High-Speed Data Applications, Gigabit Ethernet, Fast Ethernet and 155MKey BPS TP- PMD/CDDI
- Designed for Indoor Installations, (CMR) Riser
- Category-5E Shielded Twisted Pair (STP) Cable
- 4-Pair – Easily Identified Color-Striped Pairs
- 24 AWG Solid Bare Copper Conductors
- Excellent Attenuation and Crosstalk Characteristics
- Exceeds EIA/TIA 568 B.2-1
- Sequential Length Markings on Jacket
- Supplied in 1000' Easy Pull Boxes



Category 5E - Plenum/Shielded

CAT5E 350MHz Plenum Shielded Cable is made from flame retardant materials. It is used in spaces designated for air-handling such as drop ceilings that conceal return air vents in office buildings. It is vital for installations in interference prone areas. Our Twisted Pair cable cuts and strips well and comes with a ripcord. The color-striped pairs are easily identifiable for quick and easy termination. Our cable pulls well through even in the tightest of spaces.



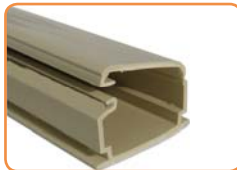
FEATURES AND BENEFITS:

- High-Performance Data Communications Cable
- Suitable for 350MHz High-Speed Data Applications, Gigabit Ethernet, Fast Ethernet and 155MKey BPS TP-PMD/CDDI
- Designed for Indoor Installations
- Flame Retardant – Type Plenum
- Category-5E Shielded Twisted Pair (STP) Cable
- 4-Pair – Easily Identified Color-Striped Pairs
- 24AWG Solid Bare Copper Conductors
- Excellent Attenuation and Crosstalk Characteristics
- ANSI/TIA-568 C.2, ISO/IEC 2nd Edition 11801 Class D, CENELEC EN 50173-1
- Flame retardancy is verified according to IEC 60332-1.
- RoHS Compliance
- Supplied in 1000' Pull Boxes



| Item # | Description |
|----------------|--|
| 057-476/S/P/BL | CAT5E 350MHz Cable, Plenum/Shielded, 24 AWG, STP, 4 Pairs,1000', Blue ● |
| 057-477/S/P/GY | CAT5E 350MHz Cable, Plenum/Shielded, 24 AWG, STP, 4 Pairs,1000', Gray ● |
| 057-478/S/P/WH | CAT5E 350MHz Cable, Plenum/Shielded, 24 AWG, STP, 4 Pairs,1000', White ○ |

Searching for Surface Raceways?



Cable Ties?



Mounting Bases?



Find them
on Page 51 to 52

Category 5E - Outdoor Rated (UTP)

CAT5E 350MHz Outdoor Rated Cable is UV and oil resistant for high resilience to environmental damage. Our Twisted Pair cable cuts and strips well and comes with a ripcord. The color-striped pairs are easily identifiable for quick and easy termination. Our cable pulls well through even in the tightest of spaces.



FEATURES AND BENEFITS:

- High-Performance Data Communications Cable
- Suitable for 350MHz High-Speed Data Applications, Gigabit Ethernet, Fast Ethernet and 155MKey BPS TP-PMD/CDDI
- Designed for Outdoor Installations UV Jacket (CMX) (UV)
- Category-5E Unshielded Twisted Pair (UTP) Cable
- 4-Pair – Easily Identified Color-Striped Pairs
- 24 AWG Solid Bare Copper Conductors
- Excellent Attenuation and Crosstalk Characteristics
- Exceeds EIA/TIA 568 B.2-1
- Sequential Length Markings on Jacket
- Supplied in 1000' Easy Pull Boxes and Wooden spool



| Item # | Description |
|----------------|---|
| 059-484/CMX | CAT5E UV Jacket for Outdoor Use, (CMX) Cable,1000' Pull Box, Black ● |
| 059-488/WS/CMX | CAT5E UV Jacket for Outdoor Use, (CMX) Cable,1000', Wooden Spool, Black ● |
| 059-491/CMX2K | CAT5E UV Jacket for Outdoor Use, (CMX) Cable,2000' Wooden Spool, Black ● |

Category 5E - Direct Burial (UTP, STP)

CAT5E 350MHz Direct Burial Cable features either water proof tape or flooded core protection. Our Twisted Pair cable cuts and strips well and comes with a ripcord. The color-striped pairs are easily identifiable for quick and easy termination. Our cable pulls well through even in the tightest of spaces.



FEATURES AND BENEFITS:

- High-Performance Data Communications Cable
- Suitable for 350MHz High-Speed Data Applications, Gigabit Ethernet, Fast Ethernet and 155MKey BPS TP-PMD/CDDI
- Designed for Direct Burial Installations
- Category-5E Shielded (STP) or Unshielded (UTP) Twisted Pair
- 4-Pair – Easily Identified Color-Striped Pairs
- 24 AWG Solid Bare Copper Conductors
- PVC Jacket (CMX), AL Foil & Water Proof Tape with Drain Wire or Flooded Core
- Excellent Attenuation and Crosstalk Characteristics
- Exceeds EIA/TIA 568 B.2-1
- Sequential Length Markings on Jacket
- Supplied in 1000' Easy Pull Boxes and Wooden Spool

| Item # | Description |
|-----------------|--|
| 059-485/CMXF | CAT5E Flooded Core, Direct Burial,1000' Pull Box, Black ● |
| 059-487/S/CMXF | CAT5E Flooded Core, (STP) Direct Burial, w/Drain Wire,1000' Spool, Black ● |
| 059-489/WS/CMXF | CAT5E Flooded Core, Direct Burial,1000', Spool, Black ● |
| 059-486/CMXT | CAT5E Shielded Waterproof Tape, Direct Burial,1000', Pull Box, Black ● |
| 059-490/WS/CMXT | CAT5E Shielded Waterproof Tape, Direct Burial,1000', Spool, Black ● |
| 059-493/CMXT2K | CAT5E Shielded Waterproof Tape, Direct Burial,2000', Pull Box, Black ● |



Category 6 - Outdoor Rated (UTP)

CAT6 600MHz Outdoor Rated Cable is UV and oil resistant for high resilience to environmental damage. Our Twisted Pair cable cuts and strips well and comes with a ripcord. The color-striped pairs are easily identifiable for quick and easy termination. Our cable pulls well through even in the tightest of spaces.



FEATURES AND BENEFITS:

- High-Performance Data Communications Cable
- Suitable for 600MHz High-Speed Data Applications, Gigabit Ethernet, Fast Ethernet and 155MKey BPS TP- PMD/CDDI
- Designed for Outdoor Installations UV Jacket (CMX) (UV)
- Category 6 Unshielded Twisted Pair (UTP) Cable
- 4-Pair – Easily Identified Color-Striped Pairs
- 23 AWG Solid Bare Copper Conductors
- Excellent Attenuation and Crosstalk Characteristics
- Exceeds EIA/TIA 568 B.2-1
- Sequential Length Markings on Jacket
- Supplied in 1000' Wooden Spool



| Item # | Description |
|-------------|--|
| 069-559/CMX | CAT6 UV Jacket for Outdoor Use, (CMX) Cable, 1000' Wooden Spool, Black ● |

Category 6 - Direct Burial

CAT6 600MHz Direct Burial Cable features either waterproof tape or flooded core protection. Our Twisted Pair cable cuts and strips well and comes with a ripcord. The color-striped pairs are easily identifiable for quick and easy termination. Our cable pulls well through even in the tightest of spaces.



FEATURES AND BENEFITS:

- High-Performance Data Communications Cable
- Suitable for 600MHz High-Speed Data Applications, Gigabit Ethernet, Fast Ethernet and 155MKey BPS TP- PMD/CDDI
- Designed for Direct Burial Installations
- Category-6 Shielded (STP) or Unshielded (UTP) Flooded Core, Twisted Pair Cable
- 4-Pair – Easily Identified Color-Striped Pairs
- 23 AWG Solid Bare Copper Conductors
- PVC Jacket (CMX), AL Foil & Waterproof Tape with Drain Wire or Flooded Core, Gell filled
- Excellent Attenuation and Crosstalk Characteristics
- Exceeds EIA/TIA 568 B.2-1
- Sequential Length Markings on Jacket
- Supplied in 1000' Wooden Spools



| Item # | Description |
|--------------|---|
| 069-560/CMXF | CAT6 CMXF Direct Burial, Flooded Core, 24 AWG, Solid, 1000' Wooden Spool, Black ● |
| 069-561/CMXT | CAT6 CMXT Direct Burial, STP, 24 AWG Waterproof Tape, 1000' Wooden Spool, Black ● |

Category 6 - Solid (UTP)

CAT6 550MHz PVC Bulk Cable provides even higher performance than our CAT5E Cable. CAT6 is standard for Gigabit Ethernet installations. Our Twisted Pair cable cuts and strips well and comes with a ripcord. The color-striped pairs are easily identifiable for quick and easy termination. Our cable pulls well through even in the tightest of spaces.



FEATURES AND BENEFITS:

- High-Performance Data Communications Cable
- Suitable for 550MHz High-Speed Data Applications, Gigabit Ethernet, Fast Ethernet and 155MKey BPS TP-PMD/CDDI
- Designed for Indoor Installations (CMR) Riser
- Category-6 Unshielded Twisted Pair (UTP) Cable
- 4-Pair – Easily Identified Color-Striped Pairs
- 23 AWG Solid Bare Copper Conductors
- Excellent Attenuation and Crosstalk Characteristics
- Exceeds EIA/TIA 568 B.2-1,
- Sequential Length Markings on Jacket
- Supplied in 1000' Easy Pull Boxes



| Item # | Description |
|-------------|---|
| 060-487/BK | CAT6, 550MHz, 23 AWG, UTP, 4 Pairs, Solid,1000', Black ● |
| 060-488/BL | CAT6, 550MHz, 23 AWG, UTP, 4 Pairs, Solid,1000', Blue ● |
| 060-490/GY | CAT6, 550MHz, 23 AWG, UTP, 4 Pairs, Solid,1000', Gray ● |
| 060-489/GR | CAT6, 550MHz, 23 AWG, UTP, 4 Pairs, Solid,1000', Green ● |
| 060-2395/OR | CAT6, 550MHz, 23 AWG, UTP, 4 Pairs, Solid,1000', Orange ● |
| 060-491/PR | CAT6, 550MHz, 23 AWG, UTP, 4 Pairs, Solid,1000', Purple ● |
| 060-492/RD | CAT6, 550MHz, 23 AWG, UTP, 4 Pairs, Solid,1000', Red ● |
| 060-493/WH | CAT6, 550MHz, 23 AWG, UTP, 4 Pairs, Solid,1000', White ○ |
| 060-494/YL | CAT6, 550MHz, 23 AWG, UTP, 4 Pairs, Solid,1000', Yellow ● |

Category 6 - Stranded (UTP)

Get up to 1 Gigabit of data transfer rate.

CAT6 550MHz Stranded Cable is the best cable to use for short runs or for constructing patch cables. It is constructed to be able to bend and twist frequently while still maintaining signal integrity. Our Twisted Pair cable cuts and strips well and comes with a ripcord. The color-striped pairs are easily identifiable for quick and easy termination. Our cable pulls well through even in the tightest of spaces.



FEATURES AND BENEFITS:

- High-Performance Data Communications Cable
- Suitable for 550MHz High-Speed Data Applications, Gigabit Ethernet, Fast Ethernet and 155MKey BPS TP-PMD/CDDI
- Designed for Indoor Installations (CM) Riser
- Category-6 Unshielded Twisted Pair (UTP) Cable
- 4-Pair – Easily Identified Color-Striped Pairs
- 24 AWG Stranded Bare Copper Conductors
- Excellent Attenuation and Crosstalk Characteristics
- Exceeds EIA/TIA 568 B.2-1,
- Sequential Length Markings on Jacket
- Supplied in 1000' Pull Boxes



| Item # | Description |
|----------------|---|
| 063-511/ST/BK | CAT6, 550MHz, 24 AWG, UTP, 4 Pairs, Stranded, 1000', Black ● |
| 063-512/ST/BL | CAT6, 550MHz, 24 AWG, UTP, 4 Pairs, Stranded, 1000', Blue ● |
| 063-514/ST/GY | CAT6, 550MHz, 24 AWG, UTP, 4 Pairs, Stranded, 1000' Gray ● |
| 063-513/ST/GR | CAT6, 550MHz, 24 AWG, UTP, 4 Pairs, Stranded, 1000', Green ● |
| 063-2201/ST/OR | CAT6, 550MHz, 24 AWG, UTP, 4 Pairs, Stranded, 1000', Orange ● |
| 063-515/ST/PR | CAT6, 550MHz, 24 AWG, UTP, 4 Pairs, Stranded, 1000', Purple ● |
| 063-516/ST/RD | CAT6, 550MHz, 24 AWG, UTP, 4 Pairs, Stranded, 1000', Red ● |
| 063-517/ST/WH | CAT6, 550MHz, 24 AWG, UTP, 4 Pairs, Stranded, 1000', White ○ |
| 063-518/ST/YL | CAT6, 550MHz, 24 AWG, UTP, 4 Pairs, Stranded, 1000', Yellow ● |

Category 6 - Plenum (UTP)

Get up to 1 Gigabit of data transfer rate.

CAT6 Plenum Bulk Cable is used for High-Speed Data Communications installations. Because it is made from flame retardant materials, our Plenum cable is used in spaces designated for air-handling such as dropped ceilings that conceal return air vents in office buildings. Our Twisted Pair cable cuts and strips well and comes with a ripcord. The color-striped pairs are easily identifiable for quick and easy termination. Our cable pulls well through even in the tightest of spaces.



Adjustable Pulling Tension Mechanism



FEATURES AND BENEFITS:

- High-Performance Data Communications Cable
- Suitable for 250MHz High-Speed Data Applications, Gigabit Ethernet, Fast Ethernet and 155MKey BPS TP-PMD/CDDI
- Designed for Indoor Installations
- Plenum Jacket. CMP rated
- Category-6 Unshielded Twisted Pair (UTP) Cable
- 4-Pair – Easily Identified Color-Striped Pairs
- 23 AWG Solid Bare Copper Conductors
- Excellent Attenuation and Crosstalk Characteristics
- Exceeds EIA/TIA 568 B.2-1
- Sequential Length Markings on Jacket
- Adjustable Pulling Tension Reel box
- Supplied in 1000' Reel in Box

| Item # | Description |
|--------------|---|
| 067-662/P/BL | CAT6, 250MHz, 23 AWG, UTP, Plenum, 4 Pairs, Solid,1000', Blue |
| 067-663/P/GR | CAT6, 250MHz, 23 AWG, UTP, Plenum, 4 Pairs, Solid,1000', Green |
| 067-665/P/RD | CAT6, 250MHz, 23 AWG, UTP, Plenum, 4 Pairs, Solid,1000', Red |
| 067-666/P/WH | CAT6, 250MHz, 23 AWG, UTP, Plenum, 4 Pairs, Solid,1000', White |
| 067-667/P/YL | CAT6, 250MHz, 23 AWG, UTP, Plenum, 4 Pairs, Solid,1000', Yellow |

US Made



Category 6 - Shielded (STP)

CAT6 550MHz Shielded Cable is vital for use in high speed network installations in interference prone areas. Our Twisted Pair cable cuts and strips well and comes with a ripcord. The color-striped pairs are easily identifiable for quick and easy termination. Our cable pulls well through even in the tightest of spaces.



FEATURES AND BENEFITS:

- High-Performance Data Communications Cable for noisy Environment
- Suitable for 550MHz High-Speed Data Applications, Gigabit Ethernet, Fast Ethernet and 155MKey BPS TP-PMD/CDDI
- Designed for Indoor Installations (CMR) Riser
- Category-6 Shielded Twisted Pair (STP) Cable
- 4-Pair – Easily Identified Color-Striped Pairs
- 23 AWG Solid Bare Copper Conductors
- Excellent Attenuation and Crosstalk Characteristics
- Exceeds EIA/TIA 568 B.2-1
- Sequential Length Markings on Jacket
- Supplied in 1000' Wooden Spool



| Item # | Description |
|--------------|--|
| 062-503/S/BK | CAT6 550MHz Cable, 23 AWG, STP, 4 Pairs, 1000', Black ● |
| 062-504/S/BL | CAT6 550MHz Cable, 23 AWG, STP, 4 Pairs, 1000', Blue ● |
| 062-506/S/GY | CAT6 550MHz Cable, 23 AWG, STP, 4 Pairs, 1000', Gray ● |
| 062-505/S/GR | CAT6 550MHz Cable, 23 AWG, STP, 4 Pairs, 1000', Green ● |
| 062-508/S/RD | CAT6 550MHz Cable, 23 AWG, STP, 4 Pairs, 1000', Red ● |
| 062-510/S/YL | CAT6 550MHz Cable, 23 AWG, STP, 4 Pairs, 1000', Yellow ● |
| 062-509/S/WH | CAT6 550MHz Cable, 23 AWG, STP, 4 Pairs, 1000', White ○ |

Searching for Home Theater Products?

Find them on
Pages 55 to 56

Category 6A (AUGMENTED) Solid (UTP)

Get up to 10 Gigabit of data transfer rate.

CAT6 A (Augmented) 750Mhz Bulk PVC Cable provides even higher performance than standard CAT6. CAT6 A is for those who need the highest level of perform with category cable. The color-striped pairs are easily identifiable for quick and easy termination. It comes with a ripcord and star filler.

Cat 6A UTP is today's cabling of choice for the ability to support future bandwidth needs and 10Gb/s performance.



FEATURES AND BENEFITS:

- High-Performance Data Communications Cable
- Suitable for 10GS High-Speed Data Applications
- Designed for Indoor Installations (CMR) Riser
- Category-6A (Augmented) Unshielded Twisted Pair (UTP) Cable
- 4-Pair – Easily Identified Color-Striped Pairs
- 23AWG Solid Bare Copper Conductors
- Excellent Attenuation and Crosstalk Characteristics
- Exceeds ANSI EIA/TIA 568 B.2-10
- Supplied in 1000' Wooden Spool

| Item # | Description |
|--------------|--|
| 064-485/A/BL | CAT6A, 750MHz, 23 AWG, UTP, CMR, 4 Pairs, Solid,1000', Blue ● |
| 064-485/A/WH | CAT6A, 750MHz, 23 AWG, UTP, CMR, 4 Pairs, Solid,1000', White ○ |



Category 6A (AUGMENTED) (UTP) Plenum (CMP)

Get up to 10 Gigabit of data transfer rate.

CAT6 A (Augmented) 750Mhz Bulk PVC Cable provides even higher performance than standard CAT6. CAT6 A is for those who need the highest level of perform with category cable. The color-striped pairs are easily identifiable for quick and easy termination. It comes with a ripcord and star filler.

Because it is made from flame retardant materials, our Plenum cable is used in spaces designated for air-handling such as dropped ceilings that conceal return air vents in office buildings.



FEATURES AND BENEFITS:

- High-Performance Data Communications Cable
- Suitable for 10GS High-Speed Data Applications
- Designed for Indoor Installations (CMP) Rated
- Category-6A (Augmented) Unshielded Twisted Pair (UTP) Cable
- 4-Pair – Easily Identified Color-Striped Pairs
- 23AWG Solid Bare Copper Conductors
- Excellent Attenuation and Crosstalk Characteristics
- Exceeds ANSI EIA/TIA 568 B.2-10
- Supplied in 1000' Wooden Spool

| Item # | Description |
|----------------|---|
| 065-487/A/P/BL | CAT6A, 750MHz, 23 AWG, UTP, CMP, 4 Pairs, Plenum,1000', Blue ● |
| 065-488/A/P/WH | CAT6A, 750MHz, 23 AWG, UTP, CMP, 4 Pairs, Plenum,1000', White ○ |



RG6 Standard Shield

RG6 Standard Shield Cable is used for Cable Television, antennas, and satellite installations. The Aluminum/PET-Foil Bonded shield and Aluminum Braid Shield with 60% coverage allow for 3.0GHz performance.



FEATURES AND BENEFITS:

- High-Grade RG6U UL-Rated 3.0 GHz, Coaxial Cable
- Suitable for Digital HDTV Applications, CATV and Digital Satellite Installations
- Fully Sweep-Tested to 3000MHz
- 18 AWG Solid Copper-Clad Steel or Bare Copper Core
- Aluminum/PET-Foil Bonded
- 60% Aluminum Braid Shield
- Gas Injected Foam Polyethylene Insulation
- CM/X/G, CATV, CL2
- Sequential Length Markings on Jacket
- Supplied in 1000' Pull Box

| Item # | Description |
|-----------------|--|
| 107-1234BK6S1BX | RG6, Standard Shield, 18 AWG, CCS 60% Aluminum Braid, 75OHM, 1000' Pull Box, Black ● |
| 107-1237WH6S1BX | RG6, Standard Shield, 18 AWG, CCS 60% Aluminum Braid, 75OHM, 1000' Pull Box, White ○ |
| 107-2311/BK | RG6, Standard Shield, 18 AWG, BC 60% Aluminum Braid, 75OHM, 1000' Pull Box, Black ● |
| 107-2312/WH | RG6, Standard Shield, 18 AWG, BC 60% Aluminum Braid, 75OHM, 1000' Pull Box, White ○ |



RG6 Dual Shield With Messenger



FEATURES AND BENEFITS:

- 18AWG Solid Conductor
- Messenger (Aerial Installs)
- 75 Ohm Impedance
- Flame Retardant PVC Jacket
- UL cUL, ISO 9001:2000
- ROHS Compliant
- 1000ft Reel Box

| Item # | Description |
|-----------------|---|
| 107-1233BK/MESG | RG6 Dual Shield, W/ Messenger, 18 AWG CCS, 60% Aluminum Braid, 1000' Reel in Box, Black |



RG6 Stranded, Direct Burial



FEATURES AND BENEFITS:

- Conductor
- 75 Ohm Impedance
- Polyethylene (PE) Jacket
- Direct Burial (Gel Filled)
- ISO 9001:2000
- ROHS Compliant
- 1000ft Wooden Spool

| Item # | Description |
|-------------------|---|
| 107-1234/DB/BS/6S | RG6 Stranded, Direct Burial, 18 AWG CCS, 60% Aluminum Braid, 3.0 GHz, 1000' Wooden Spool, Black ● |



Dual RG6, Stranded, Shielded, 18 AWG CCS, 60% Aluminum Braid



FEATURES AND BENEFITS:

- 18AWG Solid Conductor
- Dual Coaxial Cable
- Swept Tested to 3.GHz
- 75 Ohm Impedance
- UV Resistant PVC Jacket
- Complies with UL 1581
- UL cUL, ISO 9001:2000
- ROHS Compliant
- 500ft Pull Box



| Item # | Description |
|----------------|--|
| 107-2320/6DSBX | Dual RG6, Stranded, Shielded, 18 AWG CCS, 60% Aluminum Braid, 3.0 GHz, 500', Pull Box, Black ● |

RG6 Quad Shield

RG6 Quad Shield Cable is used for Cable Television, antennas, and satellite installations. Quad Shield Cable provides greater protection from interference than a standard shield while delivering 3.0 GHz performance.



FEATURES AND BENEFITS:

- High-Grade RG6U UL-Rated 3.0 GHz, Coaxial Cable
- Suitable for Digital HDTV Applications, CATV, Outdoor TV Antennas and Digital Satellite Installations
- Fully Sweep-Tested to 3000MHz
- 18 AWG Solid Copper-Clad Steel or Bare Copper Core
- (2) Aluminum/PET-Foil Bonded Shield
- (1) 60% (1) 40% Aluminum Braid Shield
- Gas Injected Foam Polyethylene Insulation
- Sequential Length Markings on Jacket
- Supplied in 1000' Pull Boxes



| Item # | Description |
|-----------------|---|
| 107-1952BK6Q1BX | RG6, Quad Shield, 18 AWG, CCS 60% Aluminum Braid, 75 OHM 1000', Pull Box, Black ● |
| 107-1953WH6Q1BX | RG6, Quad Shield, 18 AWG, CCS 60% Aluminum Braid, 75 OHM 1000', Pull Box, White ○ |
| 107-2309/BK | RG6, Quad Shield, 18 AWG, BC 60% Aluminum Braid, 75 OHM 1000', Pull Box, Black ● |
| 107-2310/WH | RG6, Quad Shield, 18 AWG, BC 60% Aluminum Braid, 75 OHM 1000', Pull Box, White ○ |

Alarm & Security Cables



Find them on Pages 25-27

RG6 Quad Shield, Direct Burial

RG6 coaxial cables provide excellent performance for Antenna, CATV, Video equipment and Satellite applications. Constructed with 18AWG solid copper center conductor, gas-injected polyethylene dielectric, bonded aluminum foil shield, aluminum braid shield, UV rated PVC jackets.



FEATURES AND BENEFITS:

- 18AWG Solid Conductor
- 75 Ohm Impedance
- Polyethylene Jacket (PE)
- Direct Burial (Gel Filled)
- ISO 9001:2000
- ROHS Compliant
- 1000ft Wooden Spool



| Item # | Description |
|-------------------|---|
| 107-1952/DB/BK/6Q | RG6 Quad Shield, Direct Burial, 18 AWG CCS, 60% Aluminum Braid, 3.0 GHz,1000' Wooden Spool, Black ● |

RG6 Siamese 18 AWG CCS, 95% CCA Braid +18/2



FEATURES AND BENEFITS:

- 95% CCA Braid
- 18AWG Solid Conductor
- 18AWG (2) Conductors
- 75 Ohm Impedance
- UL cUL, ISO 9001:2000
- ROHS Compliant
- 1000ft Wooden Spool



| Item # | Description |
|-------------|--|
| 107-2181/BK | RG6 Siamese, 18 AWG CCS, 95% CCA Braid +18/2, 1000', Wooden Spool, Black ● |

RG6 Siamese, Direct Burial, 18 AWG CCS, 95% CCA Braid +18/2



FEATURES AND BENEFITS:

- 95% CCA Braid
- 18AWG Solid Conductor
- 18AWG (2) Conductors
- Polyethylene Jacket
- Direct Burial (Gel Filled)
- 75 Ohm Impedance
- ISO 9001:2000
- ROHS Compliant
- 1000ft Wooden Spool



| Item # | Description |
|----------------|--|
| 107-2181/DB/BK | RG6 Siamese, Direct Burial, 20 AWG, 95% CCA BRAID, +18/2, 1000', Wooden Spool, Black ● |

RG6 Standard Shield - Plenum

RG6 Standard Shield Plenum is suitable for Digital HDTV Applications, CATV, Outdoor TV Antennas and Digital Satellite Installations.



FEATURES AND BENEFITS:

- High-Grade RG6U
- 18 AWG Copper Clad Steel Center Conductor
- Foil + 60% Alum Braid
- CL2 CMP/CL2P/CATVP
- Sequential Length Markings on Jacket
- Supplied in 1000' Wooden Spool
- Foamed Dielectric Core over Copper Clad Steel Center Conductor (catv)



| Item # | Description |
|---------------|---|
| 107-2316/P/WH | RG6, Standard Shield, Plenum, 18 AWG, CCS 60% Aluminum Braid, 75 OHM, 1000' Wooden Spool, White ○ |

RG6 Quad Shield - Plenum

RG6 Quad Shield Plenum is suitable for Digital HDTV Applications, CATV, Outdoor TV Antennas and Digital Satellite Installations.



FEATURES AND BENEFITS:

- High-Grade RG6U UL
- 18 AWG Copper Clad Steel Center Conductor
- Foil + 60% Alum Braid
- CL2 CMP/CL2P/CATVP
- Sequential Length Markings on Jacket
- Supplied in 1000' Wooden Spool
- Foamed Dielectric Core over Copper Clad Steel Center Conductor (catv)



| Item # | Description |
|---------------|---|
| 107-2315/P/WH | RG6, Quad Shield, 18 AWG, CCS 60%/40% Aluminum Braid, 75 OHM, 1000' Wooden Spool, White ○ |

RG11 Standard Shield - Coaxial Cable

RG11 cable is suitable for the installation of CL1, CL2, CM, CMX and CMGs. For those who are concerned about the security of using these cables, they are tested to a range of about 3GHz to ensure that they provide the best possible performance when used at applicable frequencies.



FEATURES AND BENEFITS:

- 14AWG Solid Conductor
- 75 Ohm Impedance
- Flame Retardant PVC Jacket
- Meets NEC Article 820 V Rating
- UL cUL, ISO 9001:2000
- ROHS Compliant
- 1000ft Wooden Spool)



| Item # | Description |
|----------------|--|
| 107-1032BK/R11 | RG11 Coax, 14 AWG, 60% Braid 3.0 GHz, CL2 Rated, 1000' Wooden Spool, Black ○ |

RG59 Mini Coax, 24 AWG, 95% Braid

Mini Coax Cable is ultra-thin and flexible. Most mini coax is precision 22AWG coaxial cable with an RG59-spec conductor for video, audio and digital audio interconnection applications at a 75-ohm impedance. It great for today's home theater systems and HDTV applications



FEATURES AND BENEFITS:

- RG59
- 24AWG Solid Conductor
- 75 Ohm Impedance
- UL cUL, ISO 9001:2000
- ROHS Compliant
- 1000ft Pull Box



| Item # | Description |
|-----------------|---|
| 107-2174/MINI59 | RG59 Mini Coax, 24 AWG, 95% Braid, 3.0 GHz, CL2 Rated, 1000', Pull Box, Black |

RG59 Coax, Direct Burial, 20 AWG, 95% BC Braid



FEATURES AND BENEFITS:

- 95% Bare Copper Braid
- 20AWG Solid Conductor
- Direct Burial (Gel Filled)
- Polyethylene Jacket (PE)
- 75 Ohm Impedance
- ISO 9001:2000
- ROHS Compliant



| Item # | Description |
|----------------|---|
| 107-2175/DB/BK | RG59 Coax, Direct Burial, 20 AWG, 95% BC Braid, 3.0 GHz, 1000', Wooden Spool, Black |

RG59 Siamese, Direct Burial, 20 AWG, 95% BC Braid



FEATURES AND BENEFITS:

- 95% Bare Copper Braid
- 20AWG Solid Conductor
- 18AWG (2) Conductors
- Direct Burial (Gel Filled)
- Polyethylene Jacket (PE)
- 75 Ohm Impedance
- ISO 9001:2000
- ROHS Compliant
- 1000ft, Reel in Box



| Item # | Description |
|----------------|--|
| 107-2179/DB/BK | RG59 Siamese, Direct Burial, 20 AWG, 95% BC Braid, +18/2, 1000' Reel in Box, Black |
| 107-2313/DB/BK | RG59 Siamese, Direct Burial, 20 AWG, 95% BC Braid, +18/2, 500' Reel in Box, Black |

RG59 Siamese Cable 95% Braid 18/2 Power Cable

RG59 Siamese Cable simplifies the installation of surveillance systems by integrating the video signal and power into one cable. The 20 AWG Bare Copper Conductor Coax Cable has a 95% Braid outer shield to protect the video signal. Two 18 AWG Stranded Bare Copper are attached to carry the power.



FEATURES AND BENEFITS:

- RG59U Type Coaxial Cable with One Pair of 18 AWG Power Cable
- Siamese Type Configuration with Separation Web
- 20 AWG Solid Bare Copper Conductor for Optimal Signal Transmission
- 95% Bare Copper or CCA Braid Coverage for Optimum Signal Protection
- Unshielded 18 AWG Stranded Twisted Pair Power Cables
- Indoor Cable Application (non-conduit per NEC) for CCTV
- Gas Injected Foam Polyethylene Insulation
- CM/X/CL2 Rated PVC Jacket
- Sequential Length Markings on Jacket
- Available in a Wooden Spool or Reel in Box

| Item # | Description | |
|-----------------|---|---|
| 107-1946BK591WS | RG59 Siamese, 95% BC Braid(1) 20 AWG BC, (2) 18 AWG Power Cable, Wooden Spool, 1000', Black | ● |
| 107-1947WH591WS | RG59 Siamese, 95% BC Braid(1) 20 AWG BC, (2) 18 AWG Power Cable, Wooden Spool, 1000', White | ○ |
| 107-1948BK595RB | RG59 Siamese, 95% BC Braid(1) 20 AWG BC, (2) 18 AWG Power Cable, Reel in the Box, 500', Black | ● |
| 107-1949WH595RB | RG59 Siamese, 95% BC Braid(1) 20 AWG BC, (2) 18 AWG Power Cable, Reel in Box, 500', White | ○ |
| 107-2179/BK | RG59 Siamese, 95% CCA Braid(1) 20 AWG BC, (2) 18AWG Power Cable, Wooden Spool, 1000', Black | ● |
| 107-2180/WH | RG59 Siamese, 95% CCA Braid(1) 20 AWG BC, (2) 18 AWG Power Cable, Wooden Spool, 1000', White | ○ |
| 107-2313/BK | RG59 Siamese, 95% CCA Braid(1) 20 AWG BC, (2) 18 AWG Power Cable, Reel in Box, 500', Black | ● |
| 107-2314/WH | RG59 Siamese, 95% CCA Braid(1) 20 AWG BC, (2) 18 AWG Power Cable, Reel in Box, 500', White | ○ |



RG59 Siamese Plenum 95% Braid 18/2 Power Cable

RG59 Siamese is the choice for CCTV installations. Make your installations easier by carrying video (coax) and the option to power your equipment with the 2 18awg power cables. The 95% Bare Copper Braid protects the video signal from external EMI and RFI.

With its low smoke Plenum Jacket (CMP) it can be installed in air plenums and ducts in accordance with NEC Article 800.

RG59 Siamese, 1000', Wooden Spool, White, (1) 20AWG Bare Copper Coaxial Cable with 95% Bare Copper Braid and (2) 18AWG Stranded Power Cables, Siamese CMP for CCTV



FEATURES AND BENEFITS:



- Coaxial cable distribution of audio/video, radio frequency CATV-MATV, Computer/Data Processing and CCTV Transmissions.
- RG59 Type Coaxial Cable with One Pair of 18AWG Power Cable
- Siamese Type Configuration with Separation Web
- 20AWG Solid Bare Copper Conductor For Optimal Signal Transmission
- 95% Bare Copper Braid Coverage For Optimum Signal Protection
- Unshielded 18 AWG Stranded Twisted Pair Power Cables
- Available in a Wooden Spool



| Item # | Description | |
|---------------|---|---|
| 107-2317/P/WH | RG59, SIAMESE (CMP) 95% BC Braid, 20AWG BC 95% BRAID (2) 18AWG CONDUCTOR 1000' WOOD SPOOL | ○ |

RG59 95% Braid for CCTV



FEATURES AND BENEFITS:

- Coaxial cable for distribution of audio/ video, radio frequency CATV-MATV, Computer/Data Processing and CCTV Transmissions.
- RG59U Type Coaxial Cable sweep tested to 3.0 GHz
- 20 AWG Solid Bare Copper Conductor for Optimal Signal Transmission
- 95% Bare Copper Braid Coverage for Optimum Signal Protection
- Indoor Cable Application (non-conduit per NEC) for: CCTV
- Gas Injected Foam Polyethylene Insulation
- UL Listed CM/X/CL2 Rated PVC Jacket
- Sequential Length Markings on Jacket
- Supplied in 1000' Wooden Spool

| Item # | Description |
|-------------|--|
| 107-2177/BK | RG59, PVC, 95% BC Braid 20 AWG BC, CCTV, Wooden Spool, 1000', Black ● |
| 107-2176/WH | RG59, PVC, 95% BC Braid 20 AWG BC, CCTV, Wooden Spool, 1000', White ○ |
| 107-2178/BK | RG59, PVC, 95% CCA Braid 20 AWG BC, CCTV, Wooden Spool, 1000', Black ● |



Composite, 2 x RG6U (CCS) Quad Shield with 2 x CAT5E 24AWG (UTP)



FEATURES AND BENEFITS:

- High-Performance Cat5E Data Communications Cable
- Designed for Indoor Installations, (CMR) Riser
- Category-5E Unshielded Twisted Pair (UTP) Cable
- 4-Pair – Easily Identified Color-Striped Pairs
- 24AWG Solid Bare Copper Conductors
- High-Grade RG6 Quad Shield Coaxial Cable
- 18AWG Solid Copper-Clad Steel
- Exceeds EIA/TIA 568 B.2, ISO/IEC 11801 specifications
- Supplied in a 500' Wooden Spool

| Item # | Description |
|----------|---|
| 294-2170 | 2 x RG6U (CCS) Quad Shield with 2 x CAT5E, 350Mhz, 24AWG, UTP, Solid, PVC Jacket, 500' Spool, White ○ |



Composite, 2 x RG6U (CCS) Quad Shield with 2 x CAT6 24AWG (UTP)



FEATURES AND BENEFITS:

- High-Performance Data Communications Cable Suitable for High-Speed Data Applications,
- 1000BASE-T Gigabit Ethernet, 100BASE-T Ethernet 100BASE-TX Fast Ethernet,
- 10BASE-T Ethernet and 155MKey BPS TP-PMD/CDDI
- Category-6 Unshielded Twisted Pair (UTP) Cable Designed for Indoor Installations, (CMR) Riser
- 23AWG Solid Bare Copper Conductors
- 4-Pair – Easily Identified Color-Striped Pairs
- Exceeds EIA/TIA 568 B.2, ISO/IEC 11801 specifications
- High-Grade RG6 Quad Shield Coaxial Cable
- Suitable for Digital HDTV Applications, CATV, Outdoor TV Antennas and Digital Satellite Installations
- 18AWG Solid Copper-Clad Steel
- Sweep-Tested to 3GHz
- Supplied in 500' Wooden Spool

| Item # | Description |
|----------|--|
| 294-2171 | 2 x RG6U (CCS) Quad Shield with 2 x CAT6 24AWG (UTP) White ○ |



Composite Cable, 1 x RG6U (CCS) Quad Shield with 1 x CAT5E (UTP)



FEATURES AND BENEFITS:

- High-Performance Cat5E Data Communications Cable
- Designed for Indoor Installations, (CMR) Riser
- Category-5E Unshielded Twisted Pair (UTP) Cable
- 4-Pair – Easily Identified Color-Striped Pairs
- 24AWG Solid Bare Copper Conductors
- High-Grade RG6 Quad Shield Coaxial Cable
- 18AWG Solid Copper-Clad Steel
- Exceeds EIA/TIA 568 B.2, ISO/IEC 11801 specifications
- Supplied in a 500' Wooden Spool



| Item # | Description |
|----------|---|
| 294-2172 | 1 x RG6U (CCS) Quad Shield with 1 x CAT5E, 350Mhz, 24AWG, UTP, Solid, PVC Jacket, 500' Spool, White ○ |

Composite Cable, 1 x Cat5E (UTP) with 4C x 16AWG, PVC



FEATURES AND BENEFITS:

- High-Performance Cat5E Data Communications Cable
- Suitable for 350MHz High-Speed Data Applications, Gigabit Ethernet, Fast Ethernet and 155MKey BPS TP-PMD/CDDI
- Designed for Indoor Installations, (CMR) Riser
- Category-5E Unshielded Twisted Pair (UTP) Cable
- 4-Pair – Easily Identified Color-Striped Pairs
- 16AWG 4 Conductor Speaker Cable
- Exceeds EIA/TIA 568 B.2, ISO/IEC 11801 specifications
- Supplied in 500' Wooden Spool



| Item # | Description |
|----------|---|
| 294-2173 | Composite Cable, 1 x Cat5E (UTP) with 4C x 16AWG, PVC Jacket, 500' Spool, White ○ |

Composite Cable, 2 x RG6U (CCS) Quad Shield with 2 x CAT5E (UTP) & 2 x Multi-Fiber



FEATURES AND BENEFITS:

- High-Performance Cat5E Data Communications Cable
- Suitable for 350MHz High-Speed Data Applications, Gigabit Ethernet, Fast Ethernet and 155MKey BPS TP-PMD/CDDI
- Designed for Indoor Installations, (CMR) Riser
- Category-5E Unshielded Twisted Pair (UTP) Cable
- 4-Pair – Easily Identified Color-Striped Pairs
- 24AWG Solid Bare Copper Conductors
- High-Grade RG6 Quad Shield Coaxial Cable
- Suitable for Digital HDTV Applications, CATV, Outdoor TV Antennas and Digital Satellite Installations
- 18AWG Solid Copper-Clad Steel
- Multimode Fiber (2 Cores)
- Exceeds EIA/TIA 568 B.2, ISO/IEC 11801 specifications
- Supplied in 500' Wooden Spool



| Item # | Description |
|----------|---|
| 294-2174 | Composite Cable, 2 x RG6U (CCS) Quad Shield with 2 x CAT5E (UTP) 2 X Multi-Fiber, 500' Spool, White ○ |

Security & Communications Wire 22 AWG, 2 Conductor, 7 Stranded

Key BPS Security & Communications Cable is ideal for remote control of security, intercom and sound systems. It can also be used for powering limited control circuits or burglar alarms. Applications include: door controllers, proximity sensors, key pads, sound systems, access controls and smoke detectors.



FEATURES AND BENEFITS:

- Size: 22 AWG x 2C
- Conductor Material: Stranded Bare Copper
- Diameter: 7/0.254 ±0.005mm
- Insulation Material: PVC
- Min. / Avg. Thickness: 0.150mm/ 0.170mm
- Diameter: 1.10 ±0.05mm
- Jacket Material: PVC
- Min. / Avg. Thickness: .35mm/ .38mm
- Outer Diameter: 3.0 ±0.10mm
- Cold Bend Test: -20°C, 4 hours No Cracking
- Flame Retardant Test: CMR CL2R
- Sequential length markings on Jacket
- Available in a Coil Pack or Pull Box



| Item # | Description |
|----------|--|
| 293-2160 | Security/Communications Cable, 22 AWG, 2 Conductor Stranded, 500', Coil Pack, Gray ● |
| 293-2162 | Security/Communications Cable, 22 AWG, 2 Conductor Stranded, 1000', Pull Box, Gray ● |
| 293-2150 | Security/Communications Cable, 22 AWG, 2 Conductor Stranded, 500', Coil Pack, White ○ |
| 293-2152 | Security/Communications Cable, 22 AWG, 2 Conductor Stranded, 1000', Pull Box, White ○ |
| 293-2161 | Security/Communications Cable, 22 AWG, 2 Conductor Stranded, 500', Coil Pack, Yellow ● |



Security & Communications Wire 22 AWG, 2 Conductor Solid

Key BPS Security & Communications Cable is ideal for remote control of security, intercom and sound systems. It can also be used for powering limited control circuits or burglar alarms. Applications include: door controllers, proximity sensors, key pads, sound systems, access controls and smoke detectors.



FEATURES AND BENEFITS:

- Size: 22 AWG x 2C
- Conductor Material: Solid Bare Copper
- Conductor: 0.63 ±0.005mm
- Insulation Material: PVC
- Min. / Avg. Thickness: 0.150mm/ 0.165mm
- Diameter: .96 ±0.05mm
- Jacket Material: PVC
- Min./Avg. Thickness: .35mm/ .38mm
- Outer Diameter: 2.70 ±0.10mm
- Cold Bend Test: -20°C, 4 hours No Cracking
- Flame Retardant Test: CMR CL2R
- Sequential Length Markings on Jacket
- Available in a Coil Pack or Pull Box



| Item # | Description |
|----------|--|
| 293-2166 | Security/Communications Cable, 22 AWG, 2 Conductor Solid, 500', Coil Pack, Gray ● |
| 293-2167 | Security/Communications Cable, 22 AWG, 2 Conductor Solid, 1000', Pull Box, Gray ● |
| 293-2155 | Security/Communications Cable, 22 AWG, 2 Conductor Solid, 500', Coil Pack, White ○ |
| 293-2157 | Security/Communications Cable, 22 AWG, 2 Conductor Solid, 1000', Pull Box, White ○ |



Security & Communications Wire 22 AWG, 4 Conductor, 7 Stranded

Key BPS Security & Communications Cable is ideal for remote control of security, intercom and sound systems. It can also be used for powering limited control circuits or burglar alarms. Can be used in various applications such as: door controllers, proximity sensors, key pads, sound systems, access controls and smoke detectors.



FEATURES AND BENEFITS:

- Size: 22 AWG x 4C
- Conductor Material: Stranded Bare Copper
- Conductor: 7/0.254 ±0.005mm
- Insulation Material: PVC
- Min. / Avg. Thickness: 0.150mm/ 0.170mm
- Diameter: 1.10 ±0.05mm
- Jacket Material: PVC
- Min. / Avg. Thickness: .36mm/ .40mm
- Outer Diameter: 3.50 ±0.10mm
- Cold Bend Test: -20°C, 4 hours No Cracking
- Flame Retardant Test: CMR CL2R
- Sequential Length Markings on Jacket
- Available in a Coil Pack or Pull Box

| Item # | Description |
|----------|--|
| 293-2151 | Security/Communications Cable, 22 AWG, 4 Conductor Stranded, 500', Coil Pack, White ○ |
| 293-2153 | Security/Communications Cable, 22 AWG, 4 Conductor Stranded, 1000', Pull Box, White ○ |
| 293-2163 | Security/Communications Cable, 22 AWG, 4 Conductor Stranded, 500', Coil Pack, Gray ● |
| 293-2165 | Security/Communications Cable, 22 AWG, 4 Conductor Stranded, 1000', Pull Box, Gray ● |
| 293-2164 | Security/Communications Cable, 22 AWG, 4 Conductor Stranded, 500', Coil Pack, Yellow ● |



Security & Communications Wire 22 AWG, 4 Conductor Solid

Key BPS Security & Communications Cable is ideal for remote control of security, intercom and sound systems. It can also be used for powering limited control circuits or burglar alarms. Can be used in various applications such as: door controllers, proximity sensors, key pads, sound systems, access controls and smoke detectors.



FEATURES AND BENEFITS:

- Size: 22AWG x 4C
- Conductor Material: Solid Bare Copper
- Conductor: 0.63 ±0.005mm
- Insulation Material: PVC
- Min. / Avg. Thickness: 0.150mm/ 0.165mm
- Diameter: .96 ±0.05mm
- Jacket Material: PVC
- Min. / Avg. Thickness: .35mm/ .38mm
- Outer Diameter: 3.10 ±0.10mm
- Cold Bend Test: -20, 4 hours No Cracking
- Flame Retardant Test: CMR CL2R
- Sequential Length Markings on Jacket
- Available in a Coil Pack or Pull Box

| Item # | Description |
|----------|--|
| 293-2156 | Security/Communications Cable, 22 AWG, 4 Conductor Solid, 500', Coil Pack, White ○ |
| 293-2158 | Security/Communications Cable, 22 AWG, 4 Conductor Solid, 1000', Pull Box, White ○ |
| 293-2168 | Security/Communications Cable, 22 AWG, 4 Conductor Solid, 500', Coil Pack, Gray ● |
| 293-2169 | Security/Communications Cable, 22AWG, 4 Conductor Solid, 1000', Pull Box, Gray ● |



Additional Security & Communications Cables, Bare Copper

| Item # | Description |
|-----------------|--|
| 210-222SO/5GY | 22/2 Solid Unshielded, CM CL2, 500' Gray |
| 210-222SO/5WH | 22/2 Solid Unshielded, CM CL2, 500' White |
| 210-222SO/GY | 22/2 Solid Unshielded, CM CL2, 1000' Gray |
| 210-222SO/WH | 22/2 Solid Unshielded, CM CL2, 1000' White |
| 210-222SO/S/5GY | 22/2 Solid Shielded, CM CL2, 500' Gray |
| 210-222SO/S/5WH | 22/2 Solid Shielded, CM CL2, 500' White |
| 210-222SO/S/GY | 22/2 Solid Shielded, CM CL2, 1000' Gray |
| 210-222SO/S/WH | 22/2 Solid Unshielded, CM CL2, 1000' White |
| 210-222ST/5GY | 22/2 Stranded, Unshielded, 7 Strand, CM CL2, 500' Gray |
| 210-222ST/5WH | 22/2 Stranded, Unshielded, 7 Strand, CM CL2, 500' White |
| 210-222ST/GY | 22/2 Stranded, Unshielded, 7 Strand, CM CL2, 1000' Gray |
| 210-222ST/WH | 22/2 Stranded, Unshielded, 7 Strand, CM CL2, 1000' White |
| 210-222ST/S/5GY | 22/2 Stranded, Shielded, 7 Strand, CM CL2, 500' Gray |
| 210-222ST/S/5WH | 22/2 Stranded, Shielded, 7 Strand, CM CL2, 500' White |
| 210-222ST/S/GY | 22/2 Stranded, Shielded, 7 Strand, CM CL2, 1000' Gray |
| 210-222ST/S/WH | 22/2 Stranded, Shielded, 7 Strand, CM CL2, 1000' White |
| 210-224SO/5GY | 22/4 Solid Unshielded, CM CL2, 500' Gray |
| 210-224SO/5WH | 22/4 Solid Unshielded, CM CL2, 500' White |
| 210-224SO/GY | 22/4 Solid Unshielded, CM CL2, 1000' Gray |
| 210-224SO/WH | 22/4 Solid Unshielded, CM CL2, 1000' White |
| 210-224SO/S/5GY | 22/4 Solid Shielded, CM CL2, 500' Gray |
| 210-224SO/S/5WH | 22/4 Solid Shielded, CM CL2, 500' White |
| 210-224SO/S/GY | 22/4 Solid Shielded, CM CL2, 1000' Gray |
| 210-224SO/S/WH | 22/4 Solid Unshielded, CM CL2, 1000' White |
| 210-224ST/5GY | 22/4 Stranded, Unshielded, 7 Strand, CM CL2, 500' Gray |
| 210-224ST/5WH | 22/4 Stranded, Unshielded, 7 Strand, CM CL2, 500' White |
| 210-224ST/GY | 22/4 Stranded, Unshielded, 7 Strand, CM CL2, 1000' Gray |
| 210-224ST/WH | 22/4 Stranded, Unshielded, 7 Strand, CM CL2, 1000' White |
| 210-224ST/S/5GY | 22/4 Stranded, Shielded, 7 Strand, CM CL2, 500' Gray |
| 210-224ST/S/5WH | 22/4 Stranded, Shielded, 7 Strand, CM CL2, 500' White |
| 210-224ST/S/GY | 22/4 Stranded, Shielded, 7 Strand, CM CL2, 1000' Gray |
| 210-224ST/S/WH | 22/4 Stranded, Shielded, 7 Strand, CM CL2, 1000' White |
| 210-226ST/5GY | 22/6 Stranded, Unshielded, 7 Strand, CM CL2, 500' Gray |
| 210-226ST/5WH | 22/6 Stranded, Unshielded, 7 Strand, CM CL2, 500' White |
| 210-226ST/GY | 22/6 Stranded, Unshielded, 7 Strand, CM CL2, 1000' Gray |
| 210-226ST/WH | 22/6 Stranded, Unshielded, 7 Strand, CM CL2, 1000' White |
| 210-226ST/S/5GY | 22/6 Stranded, Shielded, 7 Strand, CM CL2, 500' Gray |
| 210-226ST/S/5WH | 22/6 Stranded, Shielded, 7 Strand, CM CL2, 500' White |
| 210-226ST/S/GY | 22/6 Stranded, Shielded, 7 Strand, CM CL2, 1000' Gray |
| 210-226ST/S/WH | 22/6 Stranded, Shielded, 7 Strand, CM CL2, 1000' White |
| 210-228ST/5GY | 22/8 Stranded, Unshielded, 7 Strand, CM CL2, 500' Gray |
| 210-228ST/5WH | 22/8 Stranded, Unshielded, 7 Strand, CM CL2, 500' White |
| 210-228ST/GY | 22/8 Stranded, Unshielded, 7 Strand, CM CL2, 1000' Gray |
| 210-228ST/WH | 22/8 Stranded, Unshielded, 7 Strand, CM CL2, 1000' White |
| 210-228ST/S/5GY | 22/8 Stranded, Shielded, 7 Strand, CM CL2, 500' Gray |
| 210-228ST/S/5WH | 22/8 Stranded, Shielded, 7 Strand, CM CL2, 500' White |
| 210-228ST/S/GY | 22/8 Stranded, Shielded, 7 Strand, CM CL2, 1000' Gray |
| 210-228ST/S/WH | 22/8 Stranded, Shielded, 7 Strand, CM CL2, 1000' White |

| Item # | Description |
|-----------------|---|
| 211-182ST/5GY | 18/2 Stranded, Unshielded, 16 Strand, CM CL2, 500' Gray |
| 211-182ST/5WH | 18/2 Stranded, Unshielded, 16 Strand, CM CL2, 500' White |
| 211-182ST/GY | 18/2 Stranded, Unshielded, 16 Strand, CM CL2, 1000' Gray |
| 211-182ST/WH | 18/2 Stranded, Unshielded, 16 Strand, CM CL2, 1000' White |
| 211-182ST/S/5GY | 18/2 Stranded, Shielded, 16 Strand, CM CL2, 500' Gray |
| 211-182ST/S/5WH | 18/2 Stranded, Shielded, 16 Strand, CM CL2, 500' White |
| 211-182ST/S/GY | 18/2 Stranded, Shielded, 16 Strand, CM CL2, 1000' Gray |
| 211-182ST/S/WH | 18/2 Stranded, Shielded, 16 Strand, CM CL2, 1000' White |
| 211-183ST/5GY | 18/3 Stranded, Unshielded, 16 Strand, CM CL2, 500' Gray |
| 211-183ST/5WH | 18/3 Stranded, Unshielded, 16 Strand, CM CL2, 500' White |
| 211-183ST/GY | 18/3 Stranded, Unshielded, 16 Strand, CM CL2, 1000' Gray |
| 211-183ST/WH | 18/3 Stranded, Unshielded, 16 Strand, CM CL2, 1000' White |
| 211-183ST/S/5GY | 18/3 Stranded, Shielded, 16 Strand, CM CL2, 500' Gray |
| 211-183ST/S/5WH | 18/3 Stranded, Shielded, 16 Strand, CM CL2, 500' White |
| 211-183ST/S/GY | 18/3 Stranded, Shielded, 16 Strand, CM CL2, 1000' Gray |
| 211-183ST/S/WH | 18/3 Stranded, Shielded, 16 Strand, CM CL2, 1000' White |
| 211-184ST/5GY | 18/4 Stranded, Unshielded, 16 Strand, CM CL2, 500' Gray |
| 211-184ST/5WH | 18/4 Stranded, Unshielded, 16 Strand, CM CL2, 500' White |
| 211-184ST/GY | 18/4 Stranded, Unshielded, 16 Strand, CM CL2, 1000' Gray |
| 211-184ST/WH | 18/4 Stranded, Unshielded, 16 Strand, CM CL2, 1000' White |
| 211-184ST/S/5GY | 18/4 Stranded, Shielded, 16 Strand, CM CL2, 500' Gray |
| 211-184ST/S/5WH | 18/4 Stranded, Shielded, 16 Strand, CM CL2, 500' White |
| 211-184ST/S/GY | 18/4 Stranded, Shielded, 16 Strand, CM CL2, 1000' Gray |
| 211-184ST/S/WH | 18/4 Stranded, Shielded, 16 Strand, CM CL2, 1000' White |

Plenum Rated, Bare Copper

| Item # | Description |
|-----------------|---|
| 209-2329/P/WH | 18/2 Stranded, Unshielded, Plenum, 1000' Wooden Reel, White |
| 209-2330/P/WH | 16/2 Stranded, Unshielded, Plenum, 1000' Wooden Reel, White |
| 211-162/P/5WH | 16/2 Stranded, Unshielded, 7 Strand, CMP, 500', White, Pull Box |
| 211-162/S/P/5WH | 16/2 Stranded, Shielded, 7 Strand, CMP, 500', White, Pull Box |
| 211-164/P/5WH | 16/4 Stranded, Unshielded, 7 Strand, CMP, 500', White, Pull Box |
| 211-164/S/P/5WH | 16/4 Stranded, Shielded, 7 Strand, CMP, 500', White, Pull Box |



Multimode & Singlemode Duplex Patch Cords

Key BPS carries the most popular types of 62.5/125 Multimode and 9/125 Singlemode Duplex Patch Cords. Our Fiber Optic Patch Cords have ceramic connectors with Ultra PC (UPC) finish and OFNR rated jacket. The connectors are secured with epoxy and crimped in place to ensure their durability.



Multimode

ST/PC - ST/PC, 3.0MM DIA.

| Item # | Description |
|--------------|---|
| 261-STST/1MM | ST-ST Multimode, Duplex, 62.5/125, 3.0mm DIA, 1 Meter |
| 261-STST/2MM | ST-ST Multimode, Duplex, 62.5/125, 3.0mm DIA, 2 Meter |
| 261-STST/3MM | ST-ST Multimode, Duplex, 62.5/125, 3.0mm DIA, 3 Meter |

LC/PC - ST/PC, 3.0MM DIA.

| Item # | Description |
|--------------|---|
| 261-LCST/1MM | LC-ST Multimode, Duplex, 62.5/125, 3.0MM DIA, 1 Meter |
| 261-LCST/2MM | LC-ST Multimode, Duplex, 62.5/125, 3.0MM DIA, 2 Meter |
| 261-LCST/3MM | LC-ST Multimode, Duplex, 62.5/125, 3.0MM DIA, 3 Meter |

LC/PC - SC/PC, 3.0MM DIA.

| Item # | Description |
|--------------|---|
| 261-LCSC/1MM | LC-SC Multimode, Duplex, 62.5/125, 3.0MM DIA, 1 Meter |
| 261-LCSC/2MM | LC-SC Multimode, Duplex, 62.5/125, 3.0MM DIA, 2 Meter |
| 261-LCSC/3MM | LC-SC Multimode, Duplex, 62.5/125, 3.0MM DIA, 3 Meter |

Single mode

ST/PC - ST/PC, 3.0MM DIA.

| Item # | Description |
|--------------|--|
| 261-STST/1SM | ST-ST Singlemode, Duplex, 9/125, 3.0mm DIA, 1Meter |
| 261-STST/2SM | ST-ST Singlemode, Duplex, 9/125, 3.0mm DIA, 2Meter |
| 261-STST/3SM | ST-ST Singlemode, Duplex, 9/125, 3.0mm DIA, 3Meter |

LC/PC - ST/PC, 3.0MM DIA.

| Item # | Description |
|--------------|---|
| 261-LCST/1SM | LC-ST Singlemode, Duplex, 9/125, 3.0MM DIA, 1 Meter |
| 261-LCST/2SM | LC-ST Singlemode, Duplex, 9/125, 3.0MM DIA, 2 Meter |
| 261-LCST/3SM | LC-ST Singlemode, Duplex, 9/125, 3.0MM DIA, 3 Meter |

LC/PC - SC/PC, 3.0MM DIA.

| Item # | Description |
|--------------|---|
| 261-LCSC/1SM | LC-SC Singlemode, Duplex, 9/125, 3.0MM DIA, 1 Meter |
| 261-LCSC/2SM | LC-SC Singlemode, Duplex, 9/125, 3.0MM DIA, 2 Meter |
| 261-LCSC/3SM | LC-SC Singlemode, Duplex, 9/125, 3.0MM DIA, 3 Meter |

SC/PC - SC/PC, 3.0MM DIA.

| Item # | Description |
|--------------|---|
| 261-SCSC/1MM | SC-SC Multimode, Duplex, 62.5/125, 3.0MM DIA, 1 Meter |
| 261-SCSC/2MM | SC-SC Multimode, Duplex, 62.5/125, 3.0MM DIA, 2 Meter |
| 261-SCSC/3MM | SC-SC Multimode, Duplex, 62.5/125, 3.0MM DIA, 3 Meter |

SC/PC - ST/PC, 3.0MM DIA.

| Item # | Description |
|--------------|---|
| 261-SCST/1MM | SC-ST Multimode, Duplex, 62.5/125, 3.0mm DIA, 1 Meter |
| 261-SCST/2MM | SC-ST Multimode, Duplex, 62.5/125, 3.0mm DIA, 2 Meter |
| 261-SCST/3MM | SC-ST Multimode, Duplex, 62.5/125, 3.0mm DIA, 3 Meter |

LC/PC - LC/PC, 3.0MM DIA.

| Item # | Description |
|--------------|---|
| 261-LCLC/1MM | LC-LC Multimode, Duplex, 62.5/125, 3.0MM DIA, 1 Meter |
| 261-LCLC/2MM | LC-LC Multimode, Duplex, 62.5/125, 3.0MM DIA, 2 Meter |
| 261-LCLC/3MM | LC-LC Multimode, Duplex, 62.5/125, 3.0MM DIA, 3 Meter |

SC/PC - SC/PC, 3.0MM DIA.

| Item # | Description |
|--------------|---|
| 261-SCSC/1SM | SC-SC Singlemode, Duplex, 9/125, 3.0mm DIA, 1 Meter |
| 261-SCSC/2SM | SC-SC Singlemode, Duplex, 9/125, 3.0mm DIA, 2 Meter |
| 261-SCSC/3SM | SC-SC Singlemode, Duplex, 9/125, 3.0mm DIA, 3 Meter |

SC/PC - ST/PC, 3.0MM DIA.

| Item # | Description |
|--------------|---|
| 261-SCST/1SM | SC-ST Singlemode, Duplex, 9/125, 3.0mm DIA, 1 Meter |
| 261-SCST/2SM | SC-ST Singlemode, Duplex, 9/125, 3.0mm DIA, 2 Meter |
| 261-SCST/3SM | SC-ST Singlemode, Duplex, 9/125, 3.0mm DIA, 3 Meter |

LC/PC - LC/PC, 3.0MM DIA.

| Item # | Description |
|--------------|---|
| 261-LCLC/1SM | LC-LC Singlemode, Duplex, 9/125, 3.0MM DIA, 1 Meter |
| 261-LCLC/2SM | LC-LC Singlemode, Duplex, 9/125, 3.0MM DIA, 2 Meter |
| 261-LCLC/3SM | LC-LC Singlemode, Duplex, 9/125, 3.0MM DIA, 3 Meter |

Category 5E UTP – Molded Type With Boot and Protector

CAT5E 350MHz



| Size | Black | Blue | Green | Gray | Orange | Purple | Red | White | Yellow |
|--------|---------------|----------------|---------------|----------------|---------------|---------------|---------------|----------------|---------------|
| 1 Ft | 072-579/1BK | 072-580/1BL | 072-581/1GR | 072-582/1GY | 072-583/1OR | 072-584/1PR | 072-585/1RD | 072-586/1WH | 072-587/1YL |
| 2 Ft | 072-588/2BK | 072-589/2BL | 072-590/2GR | 072-591/2GY | 072-592/OR | 072-593/2PR | 072-594/2RD | 072-595/2WH | 072-596/2YL |
| 3 Ft | 072-597/3BK | 072-598/3BL | 072-599/3GR | 072-600/3GY | 072-601/3OR | 072-602/3PR | 072-603/3RD | 072-604/3WH | 072-605/3YL |
| 5 Ft | 072-606/5BK | 072-607/5BL | 072-608/5GR | 072-609/5GY | 072-610/5OR | 072-611/5PR | 072-612/5RD | 072-613/5WH | 072-614/5YL |
| 7 Ft | 072-615/7BK | 072-616/7BL | 072-617/7GR | 072-618/7GY | 072-619/7OR | 072-620/7PR | 072-621/7RD | 072-622/7WH | 072-623/7YL |
| 10 Ft | 072-624/10BK | 072-625/10BL | 072-626/10GR | 072-627/10GY | 072-628/10OR | 072-629/10PR | 072-630/10RD | 072-631/10WH | 072-632/10YL |
| 14 Ft | 072-633/14BK | 072-634/14BL | 072-635/14GR | 072-636/14GY | 072-637/14OR | 072-638/14PR | 072-639/14RD | 072-640/14WH | 072-641/14YL |
| 20 Ft | 072-643/20BK | 072-643/20BL | 072-644/20GR | 072-645/20GY | 072-646/20OR | 072-647/20PR | 072-648/20RD | 072-649/20WH | 072-650/20YL |
| 25 Ft | 072-651/25BK | 072-652/25BL | 072-653/25GR | 072-654/25GY | 072-655/25OR | 072-656/25PR | 072-657/25RD | 072-658/25WH | 072-659/25YL |
| 50 Ft | 072-660/50BK | 072-661/50BL | 072-662/50GR | 072-663/50GY | 072-664/50OR | 072-665/50PR | 072-666/50RD | 072-667/50WH | 072-668/50YL |
| 75 Ft | 072-669/75BK | 072-670/75BL | 072-671/75GR | 072-672/75GY | 072-673/75OR | 072-674/75PR | 072-675/75RD | 072-676/75WH | 072-677/75YL |
| 100 Ft | 072-678/100BK | 072-679/100BL | 072-680/100GR | 072-681/100GY | 072-682/100OR | 072-683/100PR | 072-684/100RD | 072-685/100WH | 072-686/100YL |
| 150 Ft | Call | 072-2396/150BL | Call | 072-2397/150GY | Call | Call | Call | 072-2398/150WH | Call |

Category 5E STP (Shielded) – Molded Type With Boot and Protector

| Size | Blue | Gray | White |
|-------|--------------|--------------|--------------|
| 1 Ft | 071-481/1BL | 071-483/1GY | 071-487/1WH |
| 3 Ft | 071-499/3BL | 071-501/3GY | 071-505/3WH |
| 5 Ft | 071-508/5BL | 071-510/5GY | 071-514/5WH |
| 7 Ft | 071-517/7BL | 071-519/7GY | 071-523/7WH |
| 10 Ft | 071-526/10BL | 071-528/10GY | 071-532/10WH |
| 14 Ft | 071-535/14BL | 071-537/14GY | 071-541/14WH |
| 25 Ft | 071-544/25BL | Call | Call |



Category 6 - Molded Type With Boot and Protector

CAT6 550MHz

| Size | Black | Blue | Green | Gray | Orange | Purple | Red | White | Yellow |
|--------|---------------|----------------|---------------|----------------|---------------|---------------|---------------|----------------|---------------|
| 1 Ft | 074-795/1BK | 074-796/1BL | 074-797/1GR | 074-798/1GY | 074-799/1OR | 074-800/1PR | 074-801/1RD | 074-802/1WH | 074-803/1YL |
| 2 Ft | 074-804/2BK | 074-805/2BL | 074-806/2GR | 074-807/2GY | 074-808/2OR | 074-809/2PR | 074-810/2RD | 074-811/2WH | 074-812/2YL |
| 3 Ft | 074-813/3BK | 074-814/3BL | 074-815/3GR | 074-816/3GY | 074-817/3OR | 074-818/3PR | 074-819/3RD | 074-820/3WH | 074-821/3YL |
| 5 Ft | 074-822/5BK | 074-823/5BL | 074-824/5GR | 074-825/5GY | 074-826/5OR | 074-827/5PR | 074-828/5RD | 074-829/5WH | 074-830/5YL |
| 7 Ft | 074-831/7BK | 074-832/7BL | 074-833/7GR | 074-834/7GY | 074-835/7OR | 074-836/7PR | 074-837/7RD | 074-838/7WH | 074-839/7YL |
| 10 Ft | 074-840/10BK | 074-841/10BL | 074-842/10GR | 074-843/10GY | 074-844/10OR | 074-845/10PR | 074-846/10RD | 074-847/10WH | 074-848/10YL |
| 14 Ft | 074-849/14BK | 074-850/14BL | 074-851/14GR | 074-852/14GY | 074-853/14OR | 074-854/14PR | 074-855/14RD | 074-856/14WH | 074-857/14YL |
| 20 Ft | 074-858/20BK | 074-859/20BL | 074-860/20GR | 074-861/20GY | 074-862/20OR | 074-863/20PR | 074-864/20RD | 074-865/20WH | 074-866/20YL |
| 25 Ft | 074-867/25BK | 074-868/25BL | 074-869/25GR | 074-870/25GY | 074-871/25OR | 074-872/25PR | 074-873/25RD | 074-874/25WH | 074-875/25YL |
| 50 Ft | 074-876/50BK | 074-877/50BL | 074-878/50GR | 074-879/50GY | 074-880/50OR | 074-881/50PR | 074-882/50RD | 074-883/50WH | 074-884/50YL |
| 75 Ft | 074-885/75BK | 074-886/75BL | 074-887/75GR | 074-888/75GY | 074-889/75OR | 074-890/75PR | 074-891/75RD | 074-892/75WH | 074-893/75YL |
| 100 Ft | 074-894/100BK | 074-895/100BL | 074-896/100GR | 074-897/100GY | 074-898/100OR | 074-899/100PR | 074-900/100RD | 074-901/100WH | 074-902/100YL |
| 150 Ft | Call | 074-2399/150BL | Call | 074-2400/150GY | Call | Call | Call | 074-2401/150WH | Call |

Category 6A - Shielded Molded Type With Boot and Protector

CAT6A 750MHz

| Size | Blue |
|------|--------------|
| 1 Ft | 076-1011/1BL |
| 3 Ft | 076-1029/3BL |
| 5 Ft | 076-1038/5BL |
| 7 Ft | 076-1047/7BL |



| Size | Blue |
|-------|---------------|
| 10 Ft | 076-1056/10BL |
| 14 Ft | 076-1065/14BL |
| 25 Ft | 076-1074/25BL |

CAT3, CAT5E, CAT6, CAT6A Plugs

Designed for round solid, stranded and shielded cable, featuring gold plated contacts for the best possible connection.



| Item # | Description |
|--------------|---|
| 009-007/64R | RJ11 Plug, 6 Position, 4 Conductor, 3 Prong, 50U, for Solid Cable |
| 009-008/66R | RJ12 Plug, 6 Position, 6 Conductor, for Telephone |
| 009-1024/44R | RJ11 Plug, 4 Position, 4 Conductor, for Handset |
| 011-015 | CAT5E RJ45 Modular Plug for Stranded Cable |
| 011-016 | CAT5E RJ45 Modular Plug for Round Solid |
| 011-017 | CAT5E RJ45 Shielded Modular Plug for Round Solid |
| 012-018 | CAT6 RJ45 Modular Plug for Round Solid |
| 012-020 | CAT6 RJ45 Modular Plug for Stranded Cable |
| 012-021 | CAT6A STP RJ45 Shielded Modular Plug, 3 Prong for Solid Cable. |

FEATURES AND BENEFITS:

- CAT3 – RJ11, RJ12 Plug for Round Solid Wire
- CAT5E – RJ45 Plug for Round Solid, Stranded and Shielded Cable
- CAT6 – RJ45 Plug for Round Solid, Stranded and Shielded Cable
- 50 Micro-Inches Gold Plated Contacts

← Fits CAT6 STP, CAT6 CMXT

RJ45 Slip on Boots

PVC slip-on boots fit most CAT5E & CAT6 bulk cable to provide strain relief and protect against dust and snags for RJ45 plugs.



| Item # | Description | Quantity |
|--------------|--------------------------------------|----------|
| 015-027BK-10 | Slip-On Boot, for CAT5E/CAT6, Black | 10 Pack |
| 015-029BL-10 | Slip-On Boot, for CAT5E/CAT6, Blue | 10 Pack |
| 015-033GY-10 | Slip-On Boot, for CAT5E/CAT6, Gray | 10 Pack |
| 015-031GR-10 | Slip-On Boot, for CAT5E/CAT6, Green | 10 Pack |
| 015-035OR-10 | Slip-On Boot, for CAT5E/CAT6, Orange | 10 Pack |
| 015-037RD-10 | Slip-On Boot, for CAT5E/CAT6, Red | 10 Pack |
| 015-039WH-10 | Slip-On Boot, for CAT5E/CAT6, White | 10 Pack |
| 015-041YL-10 | Slip-On Boot, for CAT5E/CAT6, Yellow | 10 Pack |

10 Pack Bag

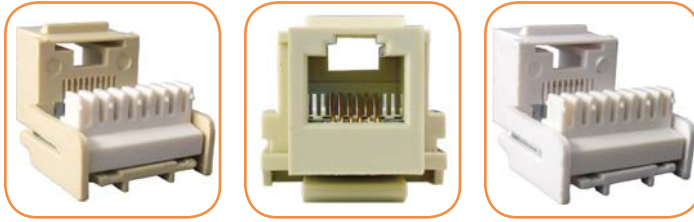


Searching for Tools?



Find them on Page 41 and 42

CAT3 H-Style Keystone Jacks



FEATURES AND BENEFITS:

- 6 Positions, 6 Conductors
- 50µ" Gold Plated Brass Contacts
- Flame Retardant Housing Materials and PCB Board
- H-Style (180°) Terminator Block
- Snaps easily into most Wall Plates, Surface Mount Boxes and Blank Patch Panels
- TIA/EIA-568 Compliant

| Item # | Description |
|---------------|---|
| 032-253IV/180 | CAT3 H-Jack, 6 Positions, 6 Conductors, Ivory |
| 032-254WH/180 | CAT3 H-Jack, 6 Positions, 6 Conductors, White |

CAT5E H-Style Keystone Jacks



FEATURES AND BENEFITS:

- 8 Positions, 8 Conductors
- Modular Unshielded CAT5E Jack
- 50µ" Gold Plated Brass Contacts
- Flame Retardant Housing Materials and PCB Board
- H-Style (180°) Terminator Block
- Snaps easily into most Wall Plates, Surface Mount Boxes and Blank Patch Panels
- TIA/EIA-568A/B Compliant

| Item # | Description |
|---------------|---|
| 033-269BL/180 | CAT5E H-Jack, 8 Positions, 8 Conductors, Blue |
| 033-271IV/180 | CAT5E H-Jack, 8 Positions, 8 Conductors, Ivory |
| 033-272OR/180 | CAT5E H-Jack, 8 Positions, 8 Conductors, Orange |
| 033-273RD/180 | CAT5E H-Jack, 8 Positions, 8 Conductors, Red |
| 033-274WH/180 | CAT5E H-Jack, 8 Positions, 8 Conductors, White |

CAT6 H-Style Keystone Jacks



| Item # | Description |
|----------------|--|
| 035-2331BL/180 | CAT6, H-Jack, 8 Positions, 8 Conductors, Blue |
| 035-2336WH/180 | CAT6, H-Jack, 8 Positions, 8 Conductors, White |

FEATURES AND BENEFITS:

- 8 Positions, 8 Conductors
- Modular Unshielded Jacks
- Consist of 50µ" Gold Plated Brass Contacts
- Housing Materials & PCB Board are Flame Retardant
- H-Style Jacks Easily Snap into Most Wall Plates, Surface Mount Boxes and Blank Patch Panels.
- TIA/EIA 568 A/B

Key BPS Keystone Jacks are a snap to install and are a key component in a network installation. Choose from CAT3, CAT5E, CAT6 and CAT6A with either U-Style (90°) or H-Style (180°) termination.

Key BPS U-Style Keystone Jacks

Key BPS Category 5E 90° Mini Jack's, feature spring wire contacts consisting of high-quality phosphor bronze, plated with 50 micro-inches of gold over nickel plating for the lowest contact resistance, giving the jack a maximum life. 110-style IDC solder-plated phosphor bronze contacts is designed to allow convenient termination of twisted pair wire, and a compact jack design. The Mini Jack's easily snaps into standard Wall Plates, Surface Mount Boxes, Blank Patch Panels and other standard equipment for a wide variety of applications. The Mini Jack's are UL listed and meet or exceed TIA/EIA-568-B specifications.

Easy fit most conventional Plates



Easy snap Termination Cover

Slim Design



Easy snap with most conventional Patch Cords



CAT3 U-Style Keystone Jacks

Key BPS Category3 90° Mini Jack's are the perfect fit for Modular connector for voice grade structured cabling systems.



APPLICATIONS:

- 10Base-T Ethernet
- 155/622 MKey BPS ATM
- 4/16 MKey BPS Token Ring
- 100VG-Any LAN

PHYSICAL SPECIFICATIONS:

- Dimension (mm) 19.85H x 17W x 30.7D

Housing Materials

- Housing High-Impact Thermoplastic (UL 94 V-0)
- DC Housing Polycarbonate (UL 94 V-0)
- Color Ivory, White

Contact Material

- IDC 110 Contacts Solder-Plated Phosphor Bronze
- Nose Contacts 50µ of gold plating over nickel plating
- Operating Life Minimum 750 insertions
- Compatibility 22 to 26 AWG Solid

Product Qualifications

TIA/EIA 568 B
UL Listed

FEATURES AND BENEFITS:

- Category3 UL Verified
- 4 Conductor solder-plated phosphor bronze contacts
- 110-IDC Contacts (Terminal Block)
- Narrow connectors allow high port density in mall areas
- EIA/TIA 568B standards
- ISO/IEC11801 2nd edition
- UL94V-0 Thermoplastic ABS Housing

| Item # | Description |
|---------------|---|
| 300-J2506/IV | CAT3 U-Jack, 6 Positions, 6 Conductors, Ivory |
| 300-J2507/WHS | CAT3 U-Jack, 6 Positions, 6 Conductors, White |

Searching for Plates?



Find them on Page 38

CAT5E U-Style Keystone Jacks



PHYSICAL SPECIFICATIONS:

- Dimension (mm) 19.85H x 17W x 30.7D
- **Housing Materials**
- Housing High-Impact Thermoplastic (UL 94 V-0)
- DC Housing Polycarbonate (UL 94 V-0)
- **Contact Material**
- IDC 110 Contacts Solder-Plated Phosphor Bronze
- Nose Contacts 50µ of gold plating over nickel plating
- Operating Life Minimum 750 insertions
- Compatibility 22 to 26 AWG Solid
- PCB FR-4, 1.6mm thickness
- Cap High-impact thermoplastic (UL 94 V-0)



APPLICATIONS:

- 10Base-T Ethernet
- 155/622 MKey BPS ATM
- 4/16 MKey BPS Token Ring
- 100VG-Any LAN

Product Qualifications

- TIA/EIA 568 B
- UL Listed

FEATURES AND BENEFITS:

- Available in various colors for easy Identification
- Category5E UL Verified
- 8 Conductor solder-plated phosphor bronze contacts
- 110-IDC Contacts (Terminal Block)
- Narrow connectors allow high port density in small areas
- EIA/TIA 568A/B standard
- ISO/IEC11801 2nd edition EN50173 2nd edition
- Color coded for 568A and 568B
- UL94V-0 Thermoplastic ABS Housing



| Item # | Description |
|--------------|---|
| 301-J2508/BK | CAT5E U-Jack, 8 Positions, 8 Conductors, Black |
| 301-J2509/BL | CAT5E U-Jack, 8 Positions, 8 Conductors, Blue |
| 301-J2511/GR | CAT5E U-Jack, 8 Positions, 8 Conductors, Green |
| 301-J2513/IV | CAT5E U-Jack, 8 Positions, 8 Conductors, Ivory |
| 301-J2514/OR | CAT5E U-Jack, 8 Positions, 8 Conductors, Orange |
| 301-J2516/RD | CAT5E U-Jack, 8 Positions, 8 Conductors, Red |
| 301-J2517/WH | CAT5E U-Jack, 8 Positions, 8 Conductors, White |
| 301-J2518/YL | CAT5E U-Jack, 8 Positions, 8 Conductors, Yellow |

Searching for Plugs?



Find them on
Page 30

CAT5e U-Style Tool less Keystone Jacks

Key BPS tool less Keystone Jack is suitable for data and telephony connections. It is designed for installation in standard keystone wall plates and blank patch panels. Self-terminating (tool-less) no punch down tool needed. Compatible with 22-26 AWG solid copper conductor. It conforms to ANSI/TIA/EIA T568B.2 standards. UL Listed



PHYSICAL SPECIFICATIONS:

- Dimension (mm) 20.0H x 19.0W x 31.6D

Housing Materials

- Housing ABS+PVC (UL 94 V-0)
- IDC Housing Polycarbonate (UL 94 V-0)

Contact Material

- IDC 110 Contacts Phosphor Bronze with 50-60 micro inch Nickel plated
- Contacts Area Minimum 3mm 50 micro inch Gold plated
- Operating Life Minimum 750 insertions
- Compatibility 22 to 26 AWG Solid
- IDC Holder Cover ABS (UL 94 V-0)
- Key Lock ABS (UL 94 V-0)

Product Qualifications

TIA/EIA 568 B
UL Listed

FEATURES AND BENEFITS:

- Available in various colors for easy Identification
- Category 5E UL Verified
- Tool-less (no punch down tool required)
- ANSI/EIA/TIA 568A/B.2 standard
- ISO/IEC 11801 2nd edition EN 50173 2nd edition
- Color coded for 568A and 568B
- UL 94V-0 Thermoplastic ABS Housing

APPLICATIONS:

- Modular connector for Category 5E UTP structured cabling systems.
- Uses include high megabit applications such as Gigabit Ethernet and 622 MKey BPS ATM.
- 10Base-T Ethernet
- 155/622 MKey BPS ATM
- 4/16 MKey BPS Token Ring
- 100VG-Any LAN

| Item # | Description |
|---------------|--|
| 033-287/TL/BL | Category 5E Tool-less Data Grade Keystone 8x8 Conductors - Blue |
| 033-288/TL/WH | Category 5E Tool-less Data Grade Keystone 8x8 Conductors - White |

CAT6 U-Style Keystone Jacks



PHYSICAL SPECIFICATIONS:

- Dimension (mm) 19.85H x 17W x 30.7D
- **Housing Materials**
- Housing High-Impact Thermoplastic (UL 94 V-0)
- DC Housing Polycarbonate (UL 94 V-0)
- **Contact Material**
- IDC 110 Contacts Solder-Plated Phosphor Bronze
- Nose Contacts 50µ of gold plating over nickel plating
- Operating Life Minimum 750 insertions
- Compatibility 22 to 26 AWG Solid
- PBC FR-4 1.6mm thickness
- Cap High-Impact Thermoplastic (UL 94 V-0)

Product Qualifications

- TIA/EIA 568 B
- UL Listed

FEATURES AND BENEFITS:

- Available in various colors for easy Identification
- Category6 UL Verified
- 8 Conductor solder-plated phosphor bronze contacts
- 110-IDC Contacts (Terminal Block)
- Narrow connectors allow high port density in small areas
- EIA/TIA 568A/B standard
- ISO/IEC11801 2nd edition EN50173 2nd edition
- Color coded for 568A and 568B
- UL94V-0 Thermoplastic ABS Housing



APPLICATIONS:

- 10Base-T Ethernet
- 155/622 MKey BPS ATM
- 4/16 MKey BPS Token Ring
- 100VG-Any LAN

| Item # | Description |
|--------------|--|
| 302-J2519/BK | CAT6 U-Jack, 8 Positions, 8 Conductors, Black |
| 302-J2520/BL | CAT6 U-Jack, 8 Positions, 8 Conductors, Blue |
| 302-J2524/IV | CAT6 U-Jack, 8 Positions, 8 Conductors, Ivory |
| 302-J2525/OR | CAT6 U-Jack, 8 Positions, 8 Conductors, Orange |
| 302-J2627/RD | CAT6 U-Jack, 8 Positions, 8 Conductors, Red |
| 302-J2628/WH | CAT6 U-Jack, 8 Positions, 8 Conductors, White |

RJ45 Inline Couplers



| Item # | Description |
|---------------|--|
| 040-362/C5/S | CAT5E RJ45 In line Coupler Extension, Shielded |
| 040-364/C5/IV | CAT5E RJ45 In line Coupler Extension, Ivory |
| 040-365/C5/WH | CAT5E RJ45 In line Coupler Extension, White |
| 040-366/C6/S | CAT6 RJ45 In line Coupler Extension, Shielded |
| 040-368/C6/IV | CAT6 RJ45 In line Coupler Extension, Ivory |
| 040-369/C6/WH | CAT6 RJ45 In line Coupler Extension, White |

CAT6A U-Style Keystone Jacks



Key BPS Category6A Unshielded 90° Jack feature spring wire contacts consisting of high-quality phosphor bronze, plated with 50 micro-inches of gold over nickel plating for lowest contact resistance, giving the jack a maximum life. With 110-style IDC solder-plated phosphor bronze contacts designed to allow convenient termination of twisted pair wire, and a compact jack design. The Jack easily snaps into standard Wall Plates, Surface Mount Boxes, Blank Patch Panels and other standard equipment for a wide variety of applications. The Jack's are UL Listed and meet or exceed TIA/EIA-568-B.2-10 specifications.

PHYSICAL SPECIFICATIONS:

- Dimension (mm) 19.85H x 17W x 30.7D

Housing Materials

- Housing High-Impact Thermoplastic (UL 94 V-0)
- DC Housing Polycarbonate (UL 94 V-0)

Contact Material

- IDC 110 Contacts Solder-Plated Phosphor Bronze
- Nose Contacts 50µ of gold plating over nickel plating
- Operating Life Minimum 750 insertions
- Compatibility 22 to 26 AWG Solid
- PBC FR-4 1.6mm thickness
- Cap High-Impact Thermoplastic (UL 94 V-0)

Product Qualifications

TIA/EIA 568B.2-10
UL Listed

FEATURES AND BENEFITS:

- Category 6A UL Verified
- 8 Conductor solder-plated phosphor bronze contacts, 110-IDC Contacts (Terminal Block)
- Improved PCB Design and IDC Geometry provide superior performance
- TIA/EIA 568B.2-10, IEEE802.3an for 10GBase-T Requirements
- ISO 11801, EN 50173-1 Class EA Specification
- UL94V-0 Thermoplastic ABS Housing
- RoHS Compliant

APPLICATIONS:

- 10GBase-T Ethernet
- 1000Base-Tx Gigabit Ethernet
- 100Base-Tx Fast Ethernet
- Analog and digital voice
- Analog and digital video

| Item # | Description |
|-----------------|--|
| 303-J2629/C6ABL | CAT6A U-Jack, 8 Positions, 8 Conductors, Blue |
| 303-J2630/6AWH | CAT6A U-Jack, 8 Positions, 8 Conductors, White |



Keystone Inserts

| Item # | Description |
|----------------|--|
| 037-318IV | F Keystone Insert, Ivory |
| 037-319WH | F Keystone Insert, White |
| 037-326IV | Blank Keystone Insert, Ivory |
| 037-327WH | Blank Keystone Insert, White |
| 037-BAN/W/F | Banana Double Female Keystone Insert, Gold Plated, White |
| 037-BAN/W/F/BK | Banana Double Female Keystone Insert, Gold Plated, Black |
| 037-BNC/W/F | BNC Female Keystone Insert, Nickel Plated, White |
| 037-RCA/W/RD | RCA Double Female Keystone Insert, Gold Plated, Red Insulator, Red |
| 037-RCA/W/WH | RCA Double Female Keystone Insert, Gold Plated, White Insulator, White |
| 037-RCA/W/YL | RCA Double Female Keystone Insert, Gold Plated, Yellow Insulator, Yellow |



037-326IV



037-327WH



037-BAN/W/F/BK



037-BAN/W/F



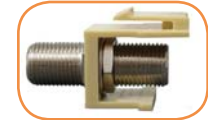
037-RCA/W/WH



037-BNC-W-F



037-319WH



037-318IV

Connectors

| Item # | Description |
|-----------------|---|
| 083-1040/B | BNC Male Connector, Twist-On Type Solderless, for RG59, Zinc |
| 083-1040/CR/B | BNC Crimping Type Connector for RG59 |
| 083-1043/CP/BNC | BNC Compression Type Connector for RG59 |
| 083-1041/S | F Male Connector, Twist-On Type, for RG6 Standard Shielded |
| 083-1041/CP/S | F Male Connector, Compression Type for RG6, Standard Shielded |
| 083-1042/CP/Q | F Male Connector, Compression Type, for RG6 Quad Shielded |
| 083-1042/Q | F Male Connector, Twist-On Type, for RG6 Quad Shielded |



083-1040/B



083-1041/S



083-1042/Q



083-1040/CR/B



083-1042/CP/Q



083-1041/CP/S

Wall Plates - RJ11 Flush Mount

Key BPS RJ11 Flush Mount Wall plates are UL Listed. They are constructed from fire retardant plastic (UL 94 V-0). They come in various colors with matching color screws.

| Item # | Description |
|---------------|---|
| 028-045/4C/IV | RJ11 Wall Plate W/4 Conductor Jack, Ivory |
| 028-045/4C/WH | RJ11 Wall Plate W/4 Conductor Jack, White |
| 028-066/8C/IV | RJ11 Wall Plate W/8 Conductor Jack, Ivory |
| 028-066/8C/WH | RJ11 Wall Plate W/8 Conductor Jack, White |



Wall Plates

Key BPS Keystone wall plates are designed to work with most Keystone Jacks and Inserts. Our Wall Plates are constructed from fire retardant plastic (UL 94 V-0). They come in various colors with matching color screws.

| Item | Almond | Ivory | White |
|--------|-----------------|-----------------|-----------------|
| Blank | 028-195AL | 028-196IV | 028-197WH |
| 1 Port | 304-J2631/1P/AL | 304-J2632/1P/IV | 304-J2633/1P/WH |
| 2 Port | 304-J2634/2P/AL | 304-J2635/2P/IV | 304-J2636/2P/WH |
| 3 Port | 304-J2637/3P/AL | 304-J2638/3P/IV | 304-J2639/3P/WH |
| 4 Port | 304-J2640/4P/AL | 304-J2641/4P/IV | 304-J2642/4P/WH |
| 6 Port | 304-J2643/6P/AL | 304-J2644/6P/IV | 304-J2645/6P/WH |



| Item # | Description |
|---------------|--|
| 028-066/8C/IV | RJ45 Wall Plate W/8 Conductor Jacks, Ivory |
| 028-067/8C/WH | RJ45 Wall Plate W/8 Conductor Jacks, White |

Single Gang, In wall Junction boxes



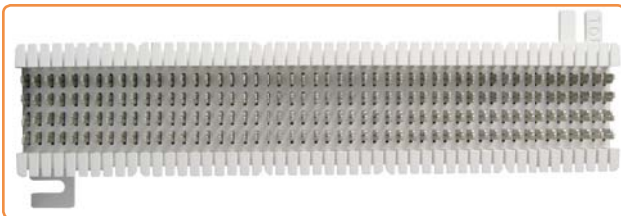
| Item # | Description |
|-----------|---|
| 022-118WH | Single Gang, In Wall Junction Box, White, 2.75(W)x4.1/2(H)x1.7/8(D) |
| 022-119IV | Single Gang In Wall Junction Box, Ivory, 2.75(W)x4.1/2(H)x1.7/8(D) |

Single Gang, Dry Wall Bracket for US Type Face Plate - Steel



| Item # | Description |
|-----------|---|
| 022-DWB/S | Single Gang Dry Wall Bracket for US Type Face Plate - Steel |

Punch Down Blocks and Accessories



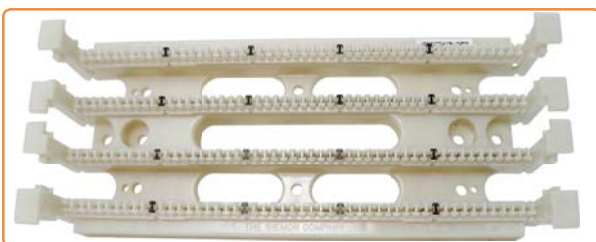
043-S66M150



043-MC425



043-S89D



043-S100DW2-100



043-SA1-100

| Item # | Description |
|-----------------|---|
| 043-S66M150 | Siemon 66 Block, 50-Strip Punch down Block. No Cover. No Brackets |
| 043-S89D | Siemon 66 Block Bracket - Beige |
| 043-MC425 | Snap on cover for S66 punch block. |
| 043-S100DW2-100 | Siemon 100 Pair, 110 Field. Block only, No Accessories |
| 043-SA1-100 | Siemon 66 Block 2 position Bridging Clip |

Surface Mount Box - 1 and 2 Ports -With Jack

Key BPS Surface Mount Boxes are designed to fit most Keystone Jacks and Inserts for quick and easy configuration. They are equipped to be easily mounted using the provided double sided adhesive tape or sheet metal screws for a variety of different installations. Our Surface mount boxes are constructed from high impact, fire retardant plastic (UL 94 V-0) and are available with Keystone Jacks already installed.

FEATURES AND BENEFITS:

- SMB Case, PCB 110 IDC, CAT5E, Unshielded

| Item # | Description |
|-----------|--|
| 038-351IV | 1-Port SMB with CAT5E Jack, Universal, Ivory |
| 038-352WH | 1-Port SMB with CAT5E Jack, Universal, White |
| 038-354IV | 2-Port SMB with CAT5E Jack, Universal, Ivory |
| 038-355WH | 2-Port SMB with CAT5E Jack, Universal, White |



Surface Mount Boxes - 1, 2, 4 and 6 Ports - Without Jack

| Item # | Description |
|-----------|--|
| 039-357IV | 1-Port, Surface Mount Box Without Jack, Universal, Ivory |
| 039-358WH | 1-Port, Surface Mount Box Without Jack, Universal, White |
| 039-360IV | 2-Port, Surface Mount Box Without Jack, Universal, Ivory |
| 039-361WH | 2-Port, Surface Mount Box Without Jack, Universal, White |
| 039-362IV | 4-Port, Surface Mount Box Without Jack, Universal, Ivory |
| 039-362WH | 4-Port, Surface Mount Box Without Jack, Universal, White |
| 039-364IV | 6-Port, Surface Mount Box Without Jack, Universal, Ivory |
| 039-365WH | 6-Port, Surface Mount Box Without Jack, Universal, White |



Surface Mount Boxes - 1 and 2 Ports - With Dust Cover, Without Jack

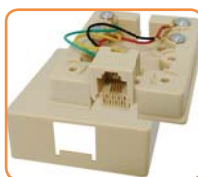
| Item # | Description |
|-------------|---|
| 039-357IV/D | 1-Port, Surface Mount Box With Dust Cover, Universal, Ivory |
| 039-358WH/D | 1-Port, Surface Mount Box With Dust Cover, Universal, White |
| 039-360IV/D | 2-Port, Surface Mount Box With Dust Cover, Universal, Ivory |
| 039-361WH/D | 2-Port, Surface Mount Box With Dust Cover, Universal, White |



Surface Mount Boxes - Telephone Box Jacks

Key BPS RJ11 and RJ12 Phone Jack Boxes, come with double sided tape and screws for easy installation. Perfect for replacing or adding a second phone line.

| Item # | Description |
|-----------|---|
| 026-148IV | RJ11 Phone Jack Box, 4 Conductor, Ivory |
| 026-149WH | RJ11 Phone Jack Box, 4 Conductor, White |
| 026-154IV | RJ12 Phone Jack Box, 6 Conductor, Ivory |
| 026-155WH | RJ12 Phone Jack Box, 6 Conductor, White |



Punch Down Tools



Punch-down tool, spring loaded, adjustable impact, cuts and terminates 110 Blocks.



Impact punch down tool for krone terminal block.

Strippers & Crimpers



Crimping Tool for RJ11, 4P4C. Built-in cutting-striping Blade.



Crimp Tool for RJ45, 8P8C. Built-in cutting-stripping blade.



Crimp Tool for RJ11, RJ12, RJ45. Built-in cutting-stripping blade.



Compression Tool. Terminates RCA, BNC and RG59/6 type connectors.



Miniature 5 adjustable stripper/cutter/Punch Down Tool, AWG10-30 Wire, UPT/STP round cable.

Testers

078-1021



Cable tester for RJ11, RJ12, RJ45 and BNC

078-2149



Cable tester for RJ11 and RJ45

Kits

078-2139



Installer kit, Network tester, Crimper, Stripper, Punch down

078-2140



Installer kit, RJ45 Network tester, Stripper, Crimper (RJ11, RJ45)

Grippers

078-1039/U



Handheld Gripper for U Style Keystone Jack

10/100Base-TX/FX Bridge 2km Multi-Mode Media Converter

Key BPS 10/100-TX/FX Bridge Media Converters enable connection of 10 MKey BPS and 100 MKey BPS twisted pair network segments and active equipment to fiber optic cabling. The fiber connection is SC or ST type Multi-mode with a distance of up to 2Km. They're ideal for FTDD, LAN-to-LAN or LAN-to-WAN fiber networking applications

FEATURES AND BENEFITS:

- Complies with IEEE802.3 and IEEE802.3u 10/100Base-TX and 100Base-FX.
- Automatically configures 10/100MKey BPS and Full/Half -Duplex in TX Port (RJ45 port)
- MDI/MDI-X Auto Negotiation for 10/100Base-TX Port
- One 100MKey BPS Fiber Port with Multi-Mode SC or ST Type Connector
- Half/Full -Duplex Mode Selector on Fiber Port
- Wall-Mountable
- FCC Class A & CE Approved
- 1-Year Warranty



| Item # | Description |
|----------|---|
| 265-2038 | 10/100 Base-TX/FX Bridge Converter 2KM, SC Connector (Multi-Mode) |
| 265-2039 | 10/100 Base-TX/FX Bridge Converter 2KM, ST Connector (Multi-Mode) |

10/100Base-TX/FX Bridge in 20, 40 and 60km, Single-Mode Media Converter

Key BPS 10/100-TX/FX Bridge Media Converters enable connection of 10 MKey BPS and 100 MKey BPS twisted pair network segments and active equipment to fiber optic cabling. The fiber connection is SC or ST type Single-Mode and gives your switch/hub the ability to interface with a fiber connection with a distance of 20, 40 or 60Km.

FEATURES AND BENEFITS:

- Complies with IEEE802.3 and IEEE802.3u 10/100Base-TX and 100Base-FX.
- Automatically configures 10/100MKey BPS and Full/Half -Duplex in TX Port (RJ45 port)
- MDI/MDI-X Auto Negotiation for 10/100Base-TX Port
- One 100MKey BPS Fiber Port with Single-Mode SC or ST Type Connector
- Half/Full -Duplex Mode Selector on Fiber Port
- Wall-Mountable
- FCC Class A & CE Approved
- 1-Year Warranty

| Item # | Description |
|----------|---|
| 265-2040 | 10/100 Base-TX/FX Bridge Converter 20KM, SC Connector (Single-Mode) |
| 265-2341 | 10/100 Base-TX/FX Bridge Converter 20KM, ST Connector (Single-Mode) |
| 265-2342 | 10/100 Base-TX/FX Bridge Converter 40KM, SC Connector (Single-Mode) |
| 265-2343 | 10/100 Base-TX/FX Bridge Converter 60KM, SC Connector (Single-Mode) |



10/100/1000Base-TX/FX Bridge 550m Multi-Mode Media Converter

Key BPS 10/100/1000-TX/FX Bridge Gigabit Media Converters connect your 1000Base-T UTP Ethernet lines to your 1000Base-SX/LX/ZX fiber optic lines quickly and easily. This converter's SC Fiber Connection is Multi-Mode type with a distance of 550m.

FEATURES AND BENEFITS:

- Supports IEEE 802.3 10Base-T, 802.3u 100Base-TX, 802.3ab 1000Base-TX and 802.3z 1000Base-SX Standards
- Automatically configures 10/100/1000MKey BPS and Full/Half-Duplex in TX Port (RJ45 port)
- MDI/MDI-X Auto Negotiation for 10/100/1000Base-TX Port
- One 1000MKey BPS Fiber Port with Multi-Mode SC Type Connector with a distance of up to 550m
- Half/Full -Duplex Mode Selector on Fiber Port
- Wall-Mountable
- FCC Class A & CE Approved
- 1-Year Warranty



| Item # | Description |
|----------|--|
| 265-2344 | 550M 10/100/1000Base-TX/FX Bridge Multi-Mode, SC Connector |

10KM 10/100/1000Base-TX/FX Bridge 10Km Single Mode, Media Converter

Key BPS 10/100/1000-TX/FX Bridge Gigabit Media Converters connect your 1000Base-T UTP Ethernet lines to your 1000Base-SX/LX/ZX fiber optic lines quickly and easily. This converter's SC Fiber Connection is Single-Mode type with a distance of 10Km.

FEATURES AND BENEFITS:

- Complies with IEEE802.3 and IEEE802.3u 10/100Base-TX and 100Base-FX.
- Automatically configures 10/100MKey BPS and Full/Half -Duplex in TX Port (RJ45 port)
- MDI/MDI-X Auto Negotiation for 10/100Base-TX Port
- One 100MKey BPS Fiber Port with Single-Mode SC or ST Type Connector
- Half/Full -Duplex Mode Selector on Fiber Port
- Wall-Mountable
- FCC Class A & CE Approved
- 1-Year Warranty



| Item # | Description |
|----------|--|
| 265-2345 | 10/100/1000Base-TX/FX Bridge Converter, 10KM, SC Connector (Single-Mode) |

5 Port 10/100M Ethernet Switch With Plastic Case, Auto Sensing

With their compact size and a light weight plastic housing Key BPS 5 & 8 port switches are an ideal solution for the small office or homeoffice. They combine plug and play installation, high performance and seamless migration between 10Base-T and 100Base-TX networks. They include 5 or 8 10/100M ports with auto-negotiation and the ability to uplink two or more switches together for expansion.

FEATURES AND BENEFITS:

- Simple Plug and Play Installation
- 5 or 8 Ports with 10/100M Key BPS N-Way (auto-negotiation)
- Meets IEEE 802.3u 100Base-TX Fast Ethernet, IEEE 802.3 10Base-TX Fast Ethernet, IEEE 802.3 10Base-T Ethernet, ANSI/IEEE 802.3 N-Way
- Supports Full-Duplex Switching Functions
- Store-and-Forward Switching Improves Overall Network Performance
- Wire-Speed Forwarding: 148,800pps/100M Key BPS and 14,880pps/10M Key BPS
- High-Performance Memory Bandwidth and Expansion Bus
- Supports Spanning Tree Protocol Eliminating Network Loops
- Supports Broadcast Storm Control Function
- Supports Port Trucking and Load Sharing for High-Performance Servers and Inter-Switch Links
- Auto-Partitioning and Data Collision Control and Auto-Polarity Detection
- Provides an Uplink Port for Cascading Hubs
- Preamble Regeneration and Incoming Frame Retiming
- Diagnostic LED's for Power, Link/Activity, Collision and Full-Duplex
- Low Power Consumption



| Item # | Description |
|----------|---|
| 295-2173 | 5 Port 10/100 Ethernet Switch W/Plastic Case, Auto Sensing, Unmanaged |



***All orders are shipped UPS/FedEx Ground unless otherwise requested.**

Overnight shipping available upon request, to guarantee next day delivery. (additional fees applicable)

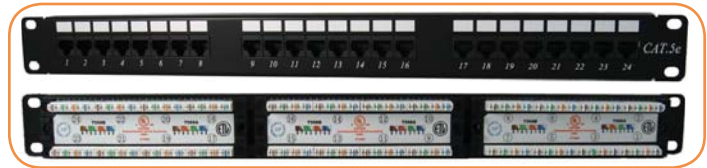
CAT5E Patch Panels in 12, 24, 48 & 96 Port

110-type termination; meets and exceeds CAT5E specifications

Key BPS Patch Panels comply with TIA/EIA-568-B.2 Category 5E and TIA/EIA-568-B.2-1 Category 6 performance requirements. Made with high impact plastic and lightweight but durable anodized aluminum, our patch panels are extremely durable. They feature 110 type IDC design and accept 110 and Krone type punch down tools and 22-26 AWG solid and stranded UTP cables. T568A & T568B wiring color schemes on the IDC, make installation easy. They feature writable and erasable marking surfaces for each port on the front panel for efficient system management.

FEATURES AND BENEFITS:

- Made of sturdy, rolled-edge, anodized aluminum
- Fully enclosed design for protection of printed circuitry during termination.
- Color-coded for T568A and T568B wiring schemes.
- Our panels fit and install in standard 19 inch cabinets.
- High-density 1U/2U/4U, 19" RMS (rack mount standard) design. Meets EIA-310-D specifications.
- Constructed from UL94-V-0 high-impact, fire-retardant ABS or PC material.
- Pair punch sequence enables a pair twist within 1/2" of termination.
- FCC Part 68, UL certified.



| Item # | Description |
|------------|--|
| 041-371/12 | CAT5E, 110-IDC Patch Panel, 12 Port, Black |
| 041-372/24 | CAT5E, 110-IDC Patch Panel, 24 Port, Black |
| 041-373/48 | CAT5E, 110-IDC Patch Panel, 48 Port, Black |
| 041-375/96 | CAT5E, 110-IDC Patch Panel, 96 Port, Black |

CAT5E & CAT6, 12 Port Mini Patch Panel, With Support Bracket

110-type termination; meets and exceeds CAT5E & CAT6 specifications

Key BPS 12 Port Mini Patch Panels provide high performance in a versatile compact unit. They mount using the included Support Brackets saving valuable rack space. These Patch Panels are equipped with flush mount jacks to eliminate snagging of cables. Jack adapter contacts feature 50 micro inch gold plated pins and termination contacts are steel plated with nickel for optimal performance. Compatible with standard 110 termination practices, CAT5E Patch Panels from Key BPS meet and exceed TIA/EIA 568A & 568B standards in addition to being and UL Listed.

FEATURES AND BENEFITS:

- Space Saving Design
- Made of sturdy, rolled-edge, anodized aluminum
- Fully enclosed design for protection of printed circuitry during termination.
- Color-coded for T568A and T568B wiring schemes.
- Wall Mount Support Brackets Included
- Constructed from UL94-V-0 high-impact, fire-retardant ABS or PC material.
- Pair punch sequence enables a pair twist within 1/2" of termination.
- Beryllium copper contacts: 50µ gold-plated pins over 100µ nickel layer.
- Insertion life cycle: 750 cycles (minimum) / I.D.C. 250 cycles (minimum).
- Operating temperature: -40°C to +68°C.
- FCC Part 68, UL certified.



| Item # | Description |
|----------|---|
| 041-370M | CAT5E, 110-IDC 12 Port Mini Patch Panel, W/Support Bracket, Black |
| 042-2134 | CAT6, 110-IDC 12 Port Mini Patch Panel, W/Support Bracket, Black |

CAT6 Patch Panels in 12, 24, 48 and 96 Port

110-type termination; meets and exceeds CAT6 specifications

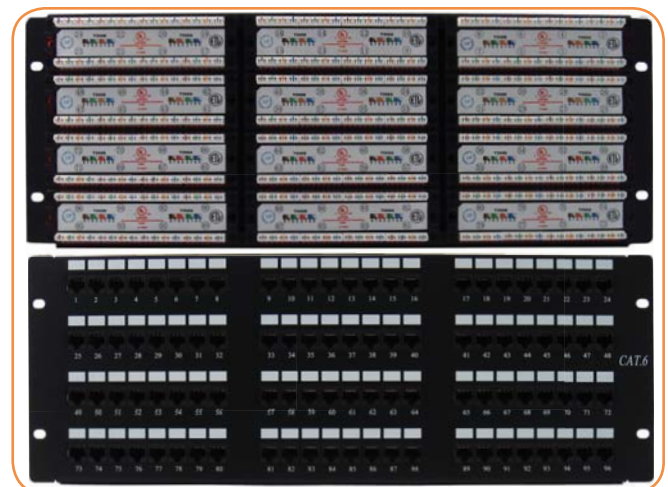
Key BPS Patch Panels comply with TIA/EIA-568-B.2 Category 5E and TIA/EIA-568-B.2-1 Category 6 performance requirements. Made with high impact plastic and lightweight but durable anodized aluminum, our patch panels are extremely durable. They feature 110 type IDC design and accept 110 and Krone type punch down tools and 22-26 AWG solid and stranded UTP cables. T568A & T568B wiring color schemes on the IDC, make installation easy. They feature writable and erasable marking surfaces for each port on the front panel for efficient system management.

FEATURES AND BENEFITS:

- Flexible design (12&24 ports for 1U; 48 ports for 2U; 96 ports for 4U)
- Made of sturdy, rolled-edge, anodized aluminum
- Fully enclosed design for protection of printed circuitry during termination.
- Color-coded for T568A and T568B wiring schemes.
- Key BPS CAT5E & .6 panels are designed for maximum strength and are compatible with standard 110 or Krone Installation tools.
- Our panels fit and install in standard 19 inch cabinets.
- High-density 1U/2U/4U, 19" RMS (rack mount standard) design. Meets EIA-310-D specifications.
- Constructed from UL94-V-0 high-impact, fire-retardant ABS or PC material.
- Pair punch sequence enables a pair twist within 1/2" of termination.
- Beryllium copper contacts: 50µ gold-plated pins over 100µ nickel layer.
- Insertion life cycle: 750 cycles (minimum) / I.D.C. 250 cycles (minimum).
- Operating temperature: -40°C to +68°C.
- FCC Part 68, UL Certified.



| Item # | Description |
|------------|---|
| 042-376/12 | CAT6, 110-IDC Patch Panel, 12 Port, Black |
| 042-377/24 | CAT6, 110-IDC Patch Panel, 24 Port, Black |
| 042-378/48 | CAT6, 110-IDC Patch Panel, 48 Port, Black |
| 042-379/96 | CAT6, 110-IDC Patch Panel, 96 Port, Black |



CAT6A 24 Port Shielded Patch Panel

With Rotating Latch, Dual Type IDC (UL)

Key BPS CAT6A Patch Panel's electrical performance complies with the Category 6 requirements of ANSI/TIA/EIA-568-B.2-1, the Category 6A requirements of TIA/EIA-568-B.2-10, 3rd Edition IEC 61935-1 (draft/217A/CDV) and 10 Gigabit Ethernet requirements of IEEE P802.3an and proposed ANSI/TIA-568B.2-10 Category 6A up to 500 MHz.

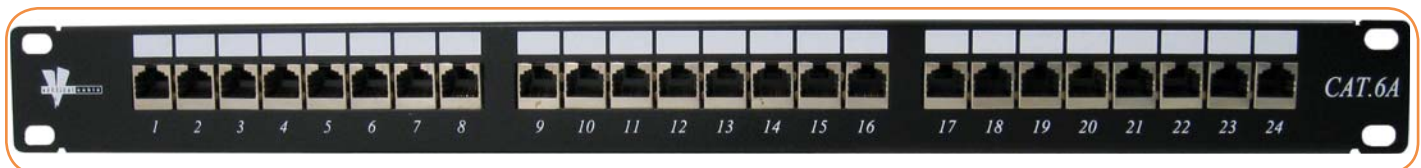
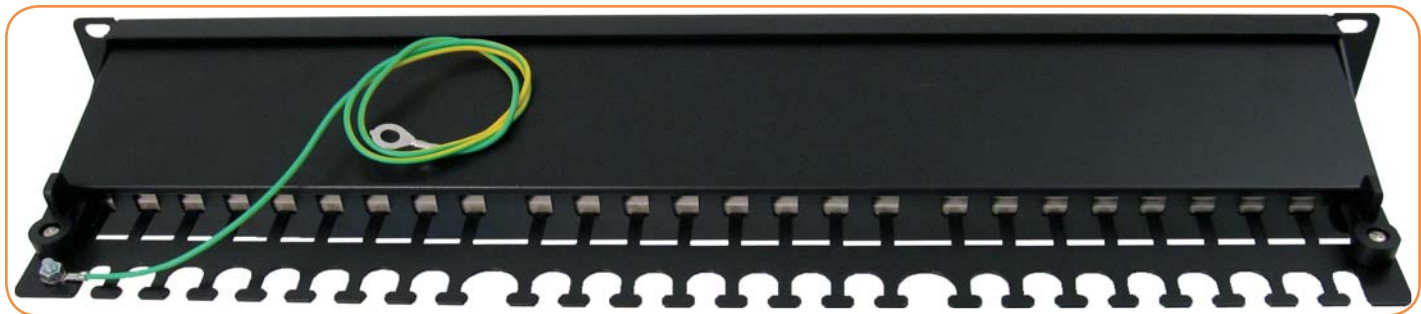
FEATURES AND BENEFITS:

- High Impact Patch Panel
- 19" Rack Mountable (EIA Racks)
- Tough Black Painted Finish
- Rolled Edge Construction for Durability
- Number Labeled for Easy Identification
- Writable & Erasable Marking Surfaces for each Port
- Interoperable and Backward Compatible to Category 3 ,5, 5e and 6
- Compatible with Standard 110 Termination Practices
- TIA/EIA-568-B.2-10 IEEE802.3an for 10GBase-T Requirement
- UL/cUL Listed, ISO 11801, EN 50173-1 Class EA Specification
- Complies with CISPR/FCC Class A
- RoHS Compliant

| Item # | Description |
|------------|--|
| 042-C6A/24 | CAT6A 24 Port Shielded Patch Panel with Rotating Latch, Dual Type IDC (UL) |

FEATURES AND BENEFITS:

- 10GBase-T Ethernet
- 1000Base-Tx Gigabit Ethernet
- 100Base-Tx Fast Ethernet
- Analog Voice and Digital Voice (VOIP)
- Analog (Broadband, Baseband) and Digital Video

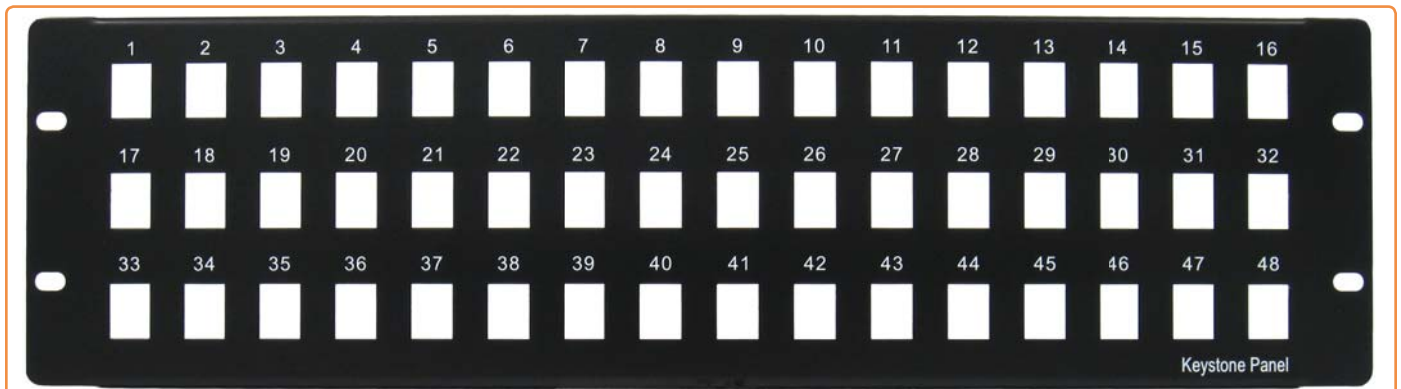
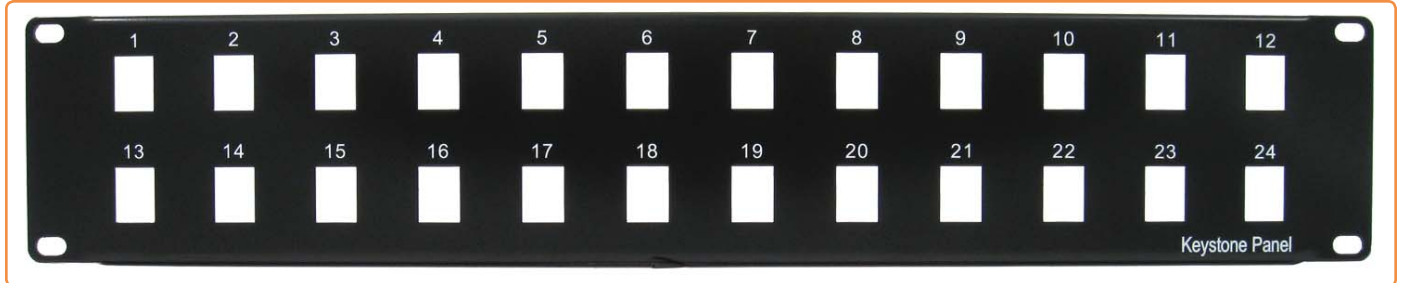


Blank Patch Panels in 12, 24, and 48 Port

FEATURES AND BENEFITS:

- Constructed from heavy-duty 16-gauge steel and UL94-V-0 high-impact, fire-retardant material.
- Accepts either 10/24 or 12/32 screws
- Durable black powder coat finish
- Universal mounting for either left or right hinging and easy panel access
- Allowing convenient wall mounting of patch panels
- Bezels, Jacks or Inserts NOT Included

| Item # | Description |
|------------|-----------------------------------|
| 043-380/12 | Blank Patch Panel, 12 Port, Black |
| 043-382/24 | Blank Patch Panel, 24 Port, Black |
| 043-384/48 | Blank Patch Panel, 48 Port, Black |



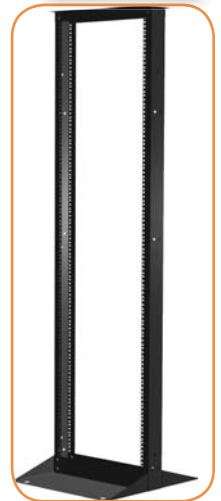
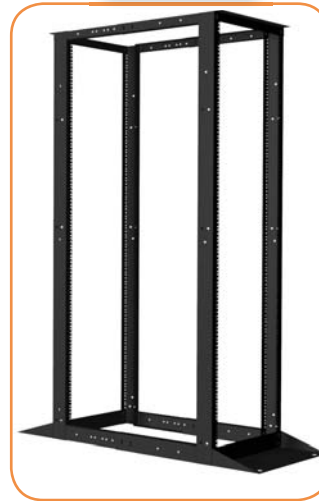
19" Open Rack Enclosures

FEATURES AND BENEFITS:

- Multiple-vendor equipment compatibility
- Steel frame design for strength and rigidity
- Adjustable depth from 20" to 36" *(4 Post open rack only)
- Highly functional and stylish. Value packed and competitively priced
- Black
- Static resistant powder coat finish
- Ships unassembled with hardware included

4 Post

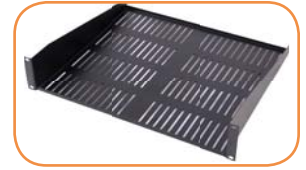
2 Post



| Item # | Description |
|------------|--|
| 047-392-2P | 19" 2 Post Open Rack Enclosure, M6 Cage with Nuts and Screws, Black, Steel Frame |
| 047-392-4P | 19" 4 Post Open Rack Enclosure, M6 Cage with Nuts and Screws, Black, Steel Frame |

Vented and Non-Vented Shelves

| Item # | Description |
|----------------|--|
| 047-393/NVT/2U | Non Vented Shelf, 19"x3.5"x16" For 2 & 4 Post Open Racks, Black, Steel |
| 047-393-VT/2U | Vented Shelf, 19"x3.5"x16" For 2 & 4 Post Open Racks, Black, Steel |



1U, 2U Cable Management

FEATURES AND BENEFITS:

- Has a durable Black Powder Coated Finish
- The Brackets accommodate 19inch patch Panels
- Accepts Either 10/24 or 12/32 Screws
- Durable Black Powder Coat Finish
- Convenient Universal Mounting for Either Left or Right Hinging and Easy Panel Access



| Item # | Description |
|-------------|---------------------|
| 044-2393/1U | 1U Cable Management |
| 044-2394/2U | 2U Cable Management |

1U, 2U and 4U Hinged Type Wall Mount Brackets



| Item # | Description |
|-----------|--|
| 046-388 | Hinged Type Wall Mount Bracket 1xEIA Unit 19"(W)x1.3/4"(H)x6 |
| 046-389 | Hinged Type Wall Mount Bracket 2xEIA Unit 19"(W)x3.1/2"(H)x6 |
| 046-388/S | 1U Patch Panel, Metal Support Bracket |
| 046-389/S | 2U Patch Panel, Metal Support Bracket |
| 046-390 | Hinged Type Wall Mount Bracket 4xEIA Unit 19"(W)x5.1/4"(H)x6 |

Raceway Products

Key BPS Low Voltage Surface Raceway (TSR) is a one piece, non-metallic, adhesive backed latching raceway designed to aesthetically organize and route communications wires including high speed UTP cable and fiber optic cable from the telecommunications room to the work area.

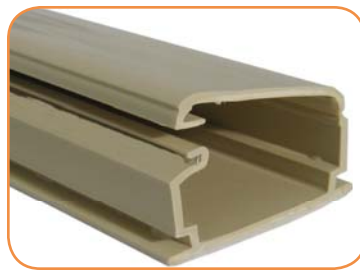
FEATURES AND BENEFITS:

- Tamper resistant, the cover's self-locking, hidden positive latch permits quick re-entry as well as providing a secure installation of premise wire.
- Manufactured from UL 94V-0 rated PVC material
- Fittings incorporate a minimum 1" bend radius per TIA/EIA 568-B and 569-A standards.
- Rubber-based foam tape adhesive with high ultimate bond strength conforms to any surface.
- Flexible hinge allows the raceway to endure numerous openings without creating discoloration or stress cracking.
- Junction boxes can be used with this raceway for electrical or data outlets
- Measuring 6ft in length.

Low Voltage Surface Raceway



Office White



Ivory

| Item # | Description |
|---------------|---|
| 045-TSR1-6A | S. Raceway -3/4", 6' length, Single Piece, Ivory |
| 045-TSR1FW-6A | S. Raceway -3/4", 6' length, Single Piece, Office White |
| 045-TSR2I-6A | S. Raceway -1-1/4", 6' length, Single Piece, Ivory |
| 045-TSR2FW-6A | S. Raceway -1-1/4", 6' length, Single Piece, Office White |
| 045-TSR3I-6A | S. Raceway -1-3/4", 6' length, Single Piece, Ivory |
| 045-TSR3FW-6A | S. Raceway -1-3/4", 6' length, Single Piece, Office White |

Cable Ties

FEATURES AND BENEFITS:

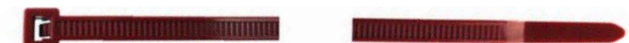
Key BPS offers many options of cable ties, whether the application demands mounting, releasable, or identification features, Key BPS has the cable tie to fit the requirement.



Standard - Black



Standard - Natural



Plenum - Red

| Item # | Description |
|---------------|----------------------------------|
| 045-T18R9C2 | 4", 18lb, Natural -100 Pack |
| 045-T18R0C2 | 4", 18lb, Black -100 Pack |
| 045-T18L9C2 | 8", 18lb, Natural -100 Pack |
| 045-T18L0C2 | 8", 18lb, Black -100 Pack |
| 045-T50I9C2 | 12", 50lb, Natural -100 Pack |
| 045-T50R2C2UL | 8", 50lb, Plenum, Red -100 Pack |
| 045-T50I2C2UL | 12", 50lb, Plenum, Red -100 Pack |

PHYSICAL SPECIFICATIONS:

- Material: Polyamide 6.6 (PA66)
- Operating Temperature: -40°F +185°F (-40°C+85°C) continuous
- Flammability: UL94 V2

Surface Raceway Accessories

Key BPS provides a complete line of fittings to manage connectivity requirements from the telecommunications room to the work area. Each size of raceway offers numerous fittings, offered in ivory or office white, including TIA/EIA compliant 1" bend radius accessories which help ensure consistent data transmission performance of category 3, 5, 5E and 6 communications systems.

Available in Office White and Ivory



Splice Cover



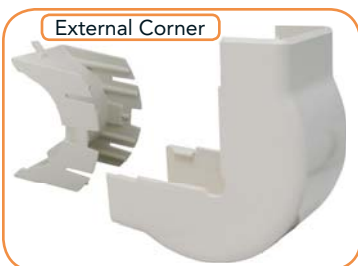
Internal Corner



Tee



Elbow



External Corner



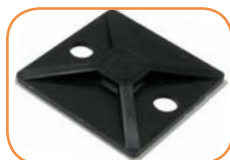
End Cap

| Item # | Description |
|-----------------|---|
| 045-TSR11-14 | S. Raceway -3/4", Splice Cover, Single Piece, Ivory |
| 045-TSR1FW-14 | S. Raceway -3/4", Splice Cover, Single Piece, Office White |
| 045-TSR11-21-1 | S. Raceway -3/4", Tee, Single Piece, Ivory |
| 045-TSR1FW-21-1 | S. Raceway -3/4", Tee, Single Piece, Office White |
| 045-TSR11-25-1 | S. Raceway -3/4", Elbow, Single Piece, Ivory |
| 045-TSR1FW-25-1 | S. Raceway -3/4", Elbow, Single Piece, Office White |
| 045-TSR11-33-1 | S. Raceway -3/4", Internal Corner, Single Piece, Ivory |
| 045-TSR1FW-33-1 | S. Raceway -3/4", Internal Corner, Single Piece, Office White |
| 045-TSR1FW-29-1 | S. Raceway -3/4", External Corner, Single Piece, Ivory |
| 045-TSR11-29-1 | S. Raceway -3/4", External Corner, Single Piece, Office White |
| 045-TSR11-36 | S. Raceway -3/4", End Cap, Single Piece, Ivory |
| 045-TSR1FW-36 | S. Raceway -3/4", End Cap, Single Piece, Office White |
| 045-TSR21-14 | S. Raceway -1-1/4", Splice Cover, Single Piece, Ivory |
| 045-TSR2FW-14 | S. Raceway -1-1/4", Splice Cover, Single Piece, Office White |
| 045-TSR21-21-1 | S. Raceway -1-1/4", Tee, Single Piece, Ivory |
| 045-TSR2FW-21-1 | S. Raceway -1-1/4", Tee, Single Piece, Office White |
| 045-TSR21-25-1 | S. Raceway -1-1/4", Elbow, Single Piece, Ivory |
| 045-TSR2FW-25-1 | S. Raceway -1-1/4", Elbow, Single Piece, Office White |
| 045-TSR21-33-1 | S. Raceway -1-1/4", Internal Corner, Single Piece, Ivory |
| 045-TSR2FW-33-1 | S. Raceway -1-1/4", Internal Corner, Single Piece, Office White |
| 045-TSR21-29-1 | S. Raceway -1-1/4", External Corner, Single Piece, Ivory |
| 045-TSR2FW-29-1 | S. Raceway -1-1/4", External Corner, Single Piece, Office White |
| 045-TSR21-36 | S. Raceway -1-1/4", End Cap, Single Piece, Ivory |
| 045-TSR2FW-36 | S. Raceway -1-1/4", End Cap, Single Piece, Office White |
| 045-TSR31-14 | S. Raceway -1-3/4", Splice Cover, Single Piece, Ivory |
| 045-TSR3FW-14 | S. Raceway -1-3/4", Splice Cover, Single Piece, Office White |
| 045-TSR31-21-1 | S. Raceway -1-3/4", Tee, Single Piece, Ivory |
| 045-TSR3FW-21-1 | S. Raceway -1-3/4", Tee, Single Piece, Office White |
| 045-TSR31-25-1 | S. Raceway -1-3/4", Elbow, Single Piece, Ivory |
| 045-TSR3FW-25-1 | S. Raceway -1-3/4", Elbow, Single Piece, Office White |
| 045-TSR31-29-1 | S. Raceway -1-3/4", Internal Corner, Single Piece, Ivory |
| 045-TSR3FW-33-1 | S. Raceway -1-3/4", Internal Corner, Single Piece, Office White |
| 045-TSR31-29-1 | S. Raceway -1-3/4", External Corner, Single Piece, Ivory |
| 045-TSR3FW-29-1 | S. Raceway -1-3/4", External Corner, Office White |
| 045-TSR31-36 | S. Raceway -1-3/4", End Cap, Single Piece, Ivory |
| 045-TSR3FW-36 | S. Raceway -1-3/4", End Cap, Single Piece, Office White |

Mounting Bases

Key BPS 4-way mounting base accommodates the T18 through T50 series cable ties. Insertion of the ties can be made from all four sides. Each mount is secured with rubber-based adhesive back. These cable tie mounting bases are suitable for many applications. Mounting bases are used in conjunction with cable ties to stabilize and secure wiring bundles, both indoors and outdoors.

| Item # | Description |
|--------------|---|
| 045-MB4A10C2 | Mounting Base - 100 Pack, for 18 to 50 lb Cable Ties, White |
| 045-MB4A0C2 | Mounting Base - 100 Pack, for 18 to 50 lb Cable Ties, Black |



PHYSICAL SPECIFICATIONS:

- Material: Polyamide 6.6 (PA66)
- Operating Temperature: -40°F +185°F (-40°C+85°C) continuous
- Flammability: UL94 V2
- Color: White, Black

High Strand Audio Cable, 16 AWG, 4 Conductor, 65 Stranded



FEATURES AND BENEFITS:

- Size: 16 AWG x 4C
- Material: Oxygen-Free Stranded Bare Copper
- Stranded Conductors Provide Additional Flexibility
- Insulation Material: PVC
- Cold Bend Test: -20°C, 4 hours No Cracking
- Flame Retardant Test: CMR CL3
- Sequential Length Markings on Jacket
- Available in a Wooden Spool or Pull Box



| Item # | Description |
|----------|---|
| 209-2316 | Audio Cable, 16 AWG, 4 Cond, 65 Stranded, PVC Jacket, 500' Pull Box, White <input type="radio"/> |
| 209-2318 | Audio Cable, 16 AWG, 4 Cond, 65 Stranded, PVC Jacket, 1000' Wooden Spool, White <input type="radio"/> |

High Strand Audio Cable, 16 AWG, 2 Conductor, 65 Stranded



FEATURES AND BENEFITS:

- Size: 16 AWG x 2C
- Material: Oxygen-Free Stranded Bare Copper
- Stranded Conductors Provide Additional Flexibility
- Insulation Material: PVC
- Cold Bend Test: -20°C, 4 hours No Cracking
- Flame Retardant Test: CMR CL3
- Sequential Length Markings on Jacket
- Available in a Wooden Spool or Pull Box



| Item # | Description |
|----------|---|
| 209-2315 | Audio Cable, 16 AWG, 2 Cond, 65 Stranded, PVC Jacket, 500' Pull Box, White <input type="radio"/> |
| 209-2317 | Audio Cable, 16 AWG, 2 Cond, 65 Stranded, PVC Jacket, 1000' Pull Box, White <input type="radio"/> |

High Strand Security & Audio Cable - Plenum, 18 AWG, 2 Conductor 16 AWG, 2 Conductor



- Size: 18 AWG x 2C, 16 AWG x 2C
- Material: Oxygen-Free Stranded Bare Copper
- Stranded Conductors Provide Additional Flexibility
- Unshielded
- Cold Bend Test: -20°C, 4 hours No Cracking
- Flame Retardant Test: CMR CL3
- Sequential Length Markings on Jacket
- Available in a Wooden Spool



| Item # | Description |
|---------------|---|
| 209-2329/P/WH | Security & Audio Cable, 18 AWG, 2 Cond, Stranded Bare Copper, Plenum Jacket, 1000' Wooden Reel, White <input type="radio"/> |
| 209-2330/P/WH | Security & Audio Cable, 16 AWG, 2 Cond, Stranded Bare Copper, Plenum Jacket, 1000' Wooden Reel, White <input type="radio"/> |



High Strand Audio Cable, 14 AWG, 4 Conductor, 41 Stranded



FEATURES AND BENEFITS:

- Size: 14 AWG x 4C
- Material: Oxygen-Free Stranded Bare Copper
- Stranded Conductors Provide Additional Flexibility
- Insulation Material: PVC
- Cold Bend Test: -20°C, 4 hours No Cracking
- Flame Retardant Test: CMR CL3
- Sequential Length Markings on Jacket
- Available in a Wooden Spool or Pull Box



| Item # | Description |
|----------|---|
| 209-2321 | Audio Cable, 14 AWG, 4 Cond, 41 Stranded, PVC Jacket, 500' Pull Box, White <input type="radio"/> |
| 209-2323 | Audio Cable, 14 AWG, 4 Cond, 41 Stranded, PVC Jacket, 1000' Wooden Spool, White <input type="radio"/> |

High Strand Audio Cable, 14 AWG, 2 Conductor, 41 Stranded



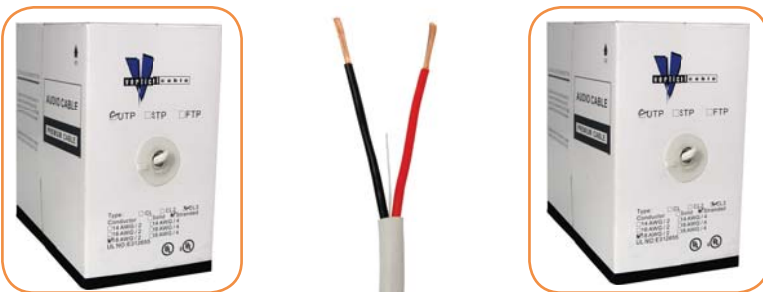
FEATURES AND BENEFITS:

- Size: 14AWG x 2C
- Material: Oxygen-Free Stranded Bare Copper
- Stranded Conductors Provide Additional Flexibility
- Insulation Material: PVC
- Cold Bend Test: -20°C, 4 hours No Cracking
- Flame Retardant Test: CMR CL3
- Sequential Length Markings on Jacket
- Available in a Wooden Spool or Pull Box



| Item # | Description |
|----------|---|
| 209-2320 | Audio Cable, 14 AWG, 2 Cond, 41 Stranded, PVC Jacket, 500' Pull Box, White <input type="radio"/> |
| 209-2322 | Audio Cable, 14 AWG, 2 Cond, 41 Stranded, PVC Jacket, 1000' Wooden Spool, White <input type="radio"/> |

High Strand Audio Cable, 18 AWG, 2 Conductor, 41 Stranded



FEATURES AND BENEFITS:

- Size: 18 AWG x 2C
- Material: Oxygen-Free Stranded Bare Copper
- Stranded Conductors Provide Additional Flexibility
- Insulation Material: PVC
- Cold Bend Test: -20°C, 4 hours No Cracking
- Flame Retardant Test: CMR CL3
- Sequential Length Markings on Jacket
- Supplied in Pull Box



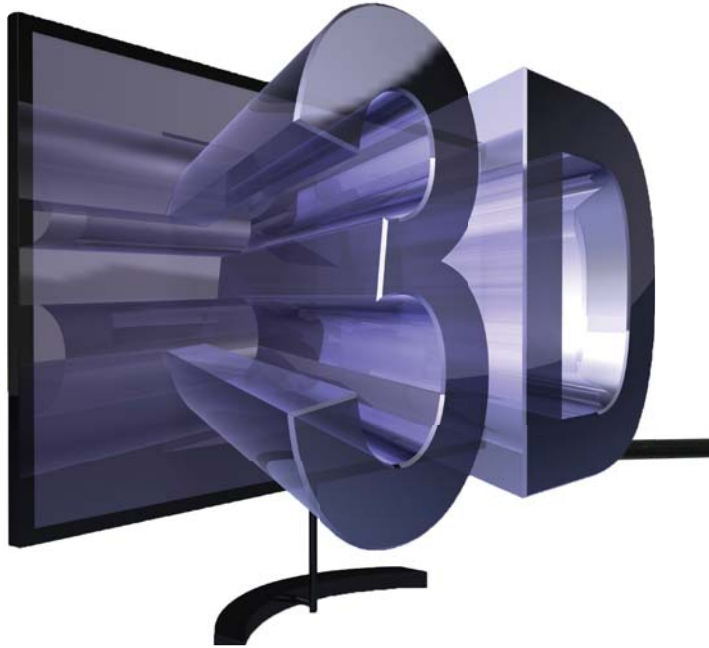
| Item # | Description |
|----------|---|
| 209-2327 | Audio Cable, 18 AWG, 2 Cond, 41 Stranded, PVC Jacket, 1000' Pull Box, White <input type="radio"/> |
| 209-2328 | Audio Cable, 18 AWG, 2 Cond, 41 Stranded, PVC Jacket, 500' Pull Box, White <input type="radio"/> |

HDMI High Speed Digital Cables with Internet

Version 1.4a

THE NEXT GENERATION IN DIGITAL CONNECTIVITY

New Features at a Glance



HDMI Ethernet Channel - integrated 100 Mb/sec. Ethernet connectivity

- Support for 3D and 4K display technologies

Audio Return Channel - sends audio data upstream to an A/V receiver

- Content Type - automatic selection of display mode based on content type
- HDMI Micro Connector for portable devices
- Automotive Connection System for in-car distribution of HD content

*Does not apply to 1.4 Version

HDMI Ethernet Channel - Adds high-speed networking to an HDMI link, allowing users to take full advantage of their IP-enabled devices without a separate Ethernet cable.

- Supports data transfer speeds up to 100 Mb/sec.
- Allows multiple connected devices to share an Internet connection.
- Accommodates current and future IP-based networking solutions for consumer electronics, including DLNA, IPTV, and UPnP.

*Does not apply to 1.4 Version

3D Support - Adds support for 3D video formats, establishing a foundation for 3D broadcast, movie, and gaming applications.

- Supports resolutions up to 1080p in 3D.
- Establishes common shared formats for 3D content for broadcast, movies, and gaming.

*Does not apply to 1.4 Version



Version 1.4a

| Item # | Description |
|--------------|--|
| 243-1947/3H | HDMI Male to HDMI Male, 3', 1080P, 28AWG, Gold Plated |
| 243-1948/6H | HDMI Male to HDMI Male, 6', 1080P, 28AWG, Gold Plated |
| 243-1949/10H | HDMI Male to HDMI Male, 10', 1080P, 28AWG, Gold Plated |
| 243-1950/15H | HDMI Male to HDMI Male, 15', 1080P, 28AWG, Gold Plated |
| 243-1951/25H | HDMI Male to HDMI Male, 25', 1080P, 28AWG, Gold Plated |
| 243-1952/30H | HDMI Male to HDMI Male, 30', 1080P, 28AWG, Gold Plated |
| 243-1953/50H | HDMI Male to HDMI Male, 50', 1080P, 28AWG, Gold Plated |

Version 1.3

| Item # | Description |
|---------------|---|
| 244-1956/3H | HDMI Male to HDMI Male, 3' Type-A 19 Pin Multimedia Cable |
| 244-1960/25H | HDMI Male to HDMI Male, 25' Type-A 19 Pin Multimedia Cable |
| 244-2414/30H | HDMI Male to HDMI Male, 30' Type-A 19 Pin Multimedia Cable |
| 244-1961/50H | HDMI Male to HDMI Male, 50' Type-A 19 Pin Multimedia Cable |
| 244-1963/100H | HDMI Male to HDMI Male, 100' Type-A 19 Pin Multimedia Cable |

HDMI, DVI Accessories & Wall Plates

Home Theater Products - HDMI/DVI Cables & Accessories



028-HWP/71



028-WP/1FX81



028-WP/2FX81



245-WP/1H/180



245-WP/2H/180



245-WP/HF81



245-WP/H1R



245-WP/H2R



245-WP/H3R

| Item # | Description |
|-----------------|---|
| 245-WP/1H/180 | HDMI Wall Plate - 1 Port, 180 Degree |
| 245-WP/1H/90 | HDMI Wall Plate - 1 Port, 90 Degree |
| 245-WP/2H/180 | HDMI Wall Plate - 2 Port, 180 Degree |
| 245-WP/2H/90 | HDMI Wall Plate - 2 Port, 90 Degree |
| 245-WP/H1R | HDMI + 1XRCA Decora Wall Plate, Gold Plated, White |
| 245-WP/H2R | HDMI + 2XRCA Decora Wall Plate, Gold Plated, White |
| 245-WP/H3R | HDMI + 3XRCA Decora Wall Plate, Gold Plated, White |
| 245-WP/HF81 | HDMI + F81 Decora Wall Plate, Gold Plated, White |
| 245-AD/DM-HF | HDMI Male to DVI 18 +1 Male Adapter, Gold Plated |
| 245-AD/HM-DF | HDMI Male TO DVI 18 +1 Female Adapter, Gold Plated |
| 245-AD/HF-HF | HDMI Female to HDMI Female Adapter, Gold Plated |
| 245-AD/HF-HF/90 | HDMI Female to HDMI Female 90° Adapter, Gold Plated |
| 245-KJC/FF/180 | HDMI CouplerJack (F/F) Fits US Wall Plates |
| 028-WP/1FX81 | TV Wall Plate with 1 FX81 Connector |
| 028-WP/2FX81 | TV Wall Plate with 2 FX81 Connectors |



245-HF/HF-90



245-AD-HF/HF



245-AD/DM-HF



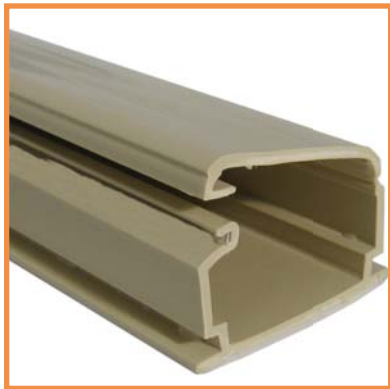
245-KJC/FF/180



CAT3 25Pair, with Gel



Business Process Solutions
Authorized Distributor



Raceways



CAT6A



RG6 Dual Shield with Messenger



RG6 Siamese



RG6 Siamese, Direct Burial



RG11 Standard Shield



Dual RG6 Standard, Shielded



CAT5 Shielded Patch Cord



CAT5E 50 Pair



Business Process Solutions

Authorized Distributor

Key Business Process Solutions, S.A. de C.V.

Cerro de las Campanas No.3, Int 520 Piso 5
Col. San Andres Atenco C.P. 54040
Tlalnepantla, Estado de México, México

Phone: +52.55.2487.3000
Fax: +52.55.5370.9790