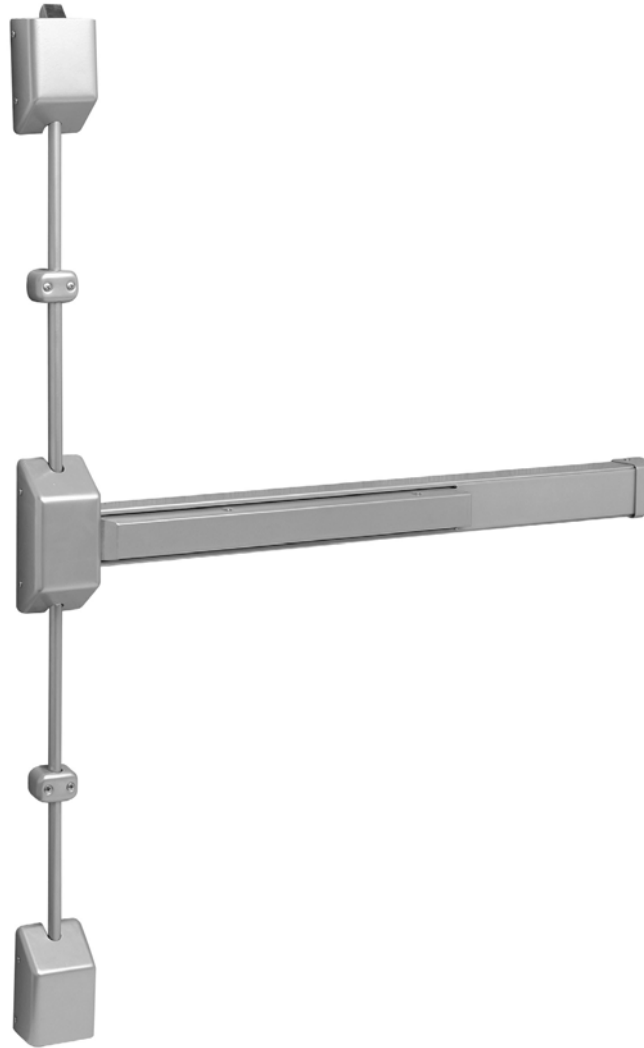


SARGENT®

ASSA ABLOY

30 Series Parts Manual



For assistance, contact SARGENT at
800-727-5477 or www.sargentlock.com

<p>⚠ WARNING This product can expose you to lead which is known to the state of California to cause cancer and birth defects or other reproductive harm. For more information go to www.P65warnings.ca.gov.</p> <p>08/2019</p>

20 series Parts List

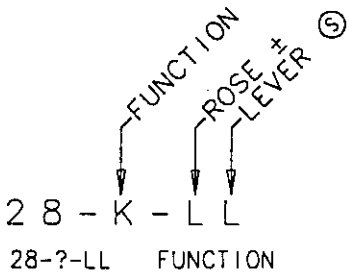
LEVER TRIM
FOR 20 AND 30 SERIES
AND ALARMED EXITS

28-K-LL

Parts List

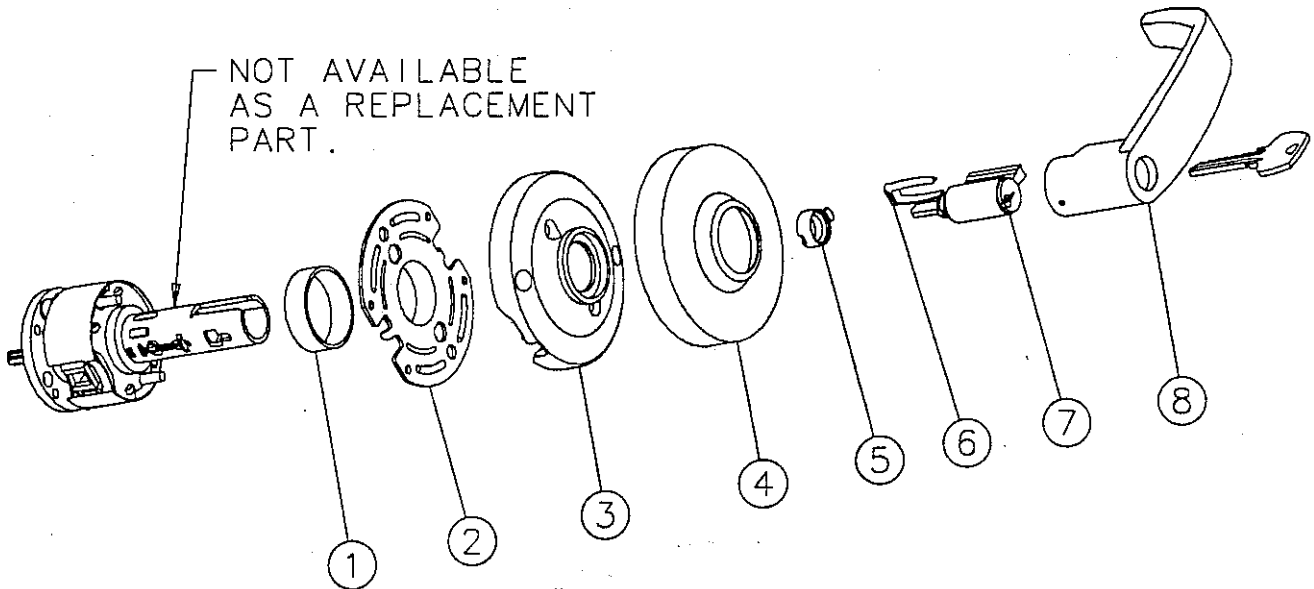
Page No 28.3 Rev A

2/2/2000



ITEM	PART NO.	DESCRIPTION	QTY
1	07-0100	SPACER	1
2	07-0105	SUPPORT PLATE	1
3	07-2426	OUTSIDE ROSE ASSEMBLY	1
4	10-0197	ROSE SCALP *	1
5	10-0364	CYLINDER SPACER	1
6	10-0032	CYLINDER RETAINER	1
7	—	CYLINDER * ϕ	1
8	—	LEVER * ⑤	1
	07-2498	SCREW PACK	1
	07-2496	MOUNTING PLATE PACK	1

- * SPECIFY FINISH
- ϕ SPECIFY 10 LINE CYLINDER BY KEYING REQUIREMENTS
- ⑤ FOR AVAILABLE LEVERS SEE 28.5
- ± "L" ROSE ONLY
- ** FOR "28-D-LL" SEE 28.4



20 series
Parts List

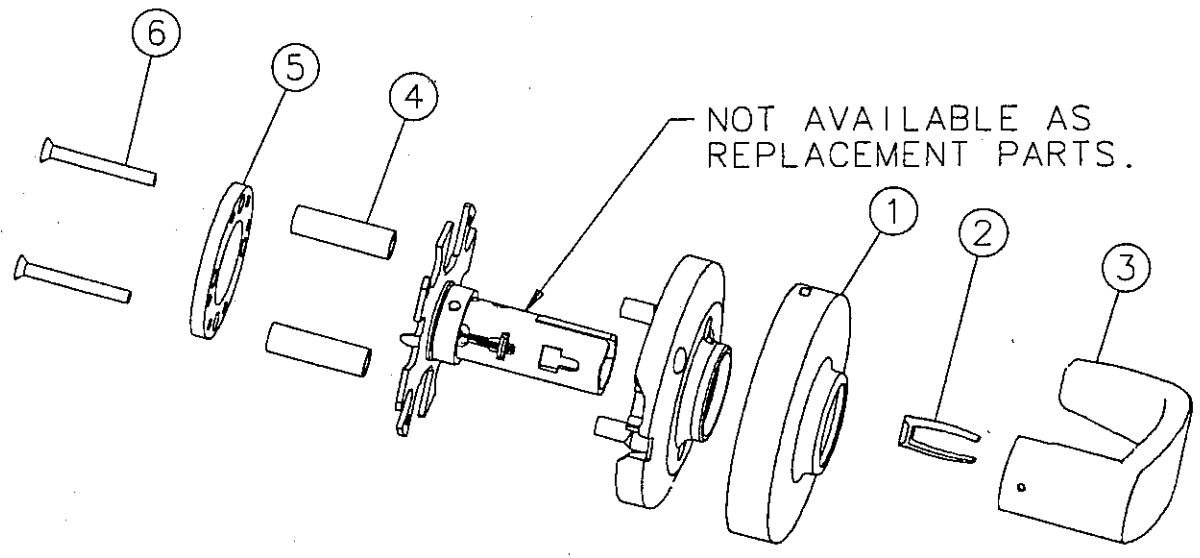
LEVER TRIM
20 AND 30 SERIES
AND ALARMED EXITS
"28-D-LL"

Parts List
Page No 28.4 Rev A
2/2/2000

28-D-LL
10 FUNCTION

ITEM	PART NO.	DESCRIPTION	QTY
1	10-0197	ROSE SCALP *	1
2	10-0032	CYLINDER RETAINER	1
3	—	LEVER HANDLE * ⑤	1
4	07-0123	MOUNTING PLATE SPACER	2
5	07-0116	MOUNTING PLATE	1
6	01-1119	SCREW (#8-32 X 1 1/2)	2
	07-2498	SCREW PACK	1
	07-2499	MOUNTING PLATE PACK	1

* SPECIFY FINISH
⑤ FOR AVAILABLE LEVERS SEE 28.5



20series Parts List

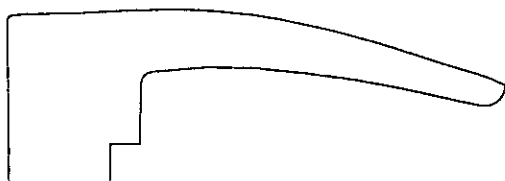
28 LEVER TRIM
FOR 20 AND 30 SERIES
AND ALARMED EXITS

Parts List

Page No Rev
28.5 A

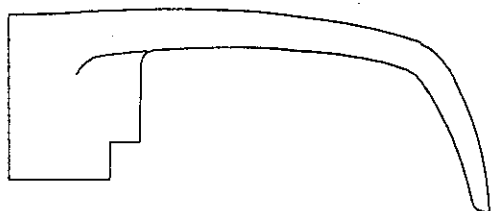
2/2/2000

PART No.	DESCRIPTION
10-2250	PASSAGE
10-2251	STANDARD CYLINDER
10-2305	INTERCHANGEABLE CORE
10-2257	REMOVABLE CORE



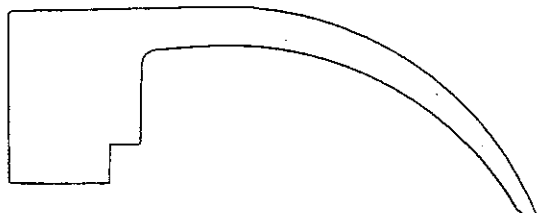
"B" LEVER

PART No.	DESCRIPTION
10-2045	PASSAGE
10-2046	STANDARD CYLINDER
10-2307	INTERCHANGEABLE CORE
10-2079	REMOVABLE CORE



"L" LEVER

PART No.	DESCRIPTION
10-2136	PASSAGE
10-2137	STANDARD CYLINDER
10-2303	INTERCHANGEABLE CORE
10-2143	REMOVABLE CORE



"P" LEVER

20 series
Parts List

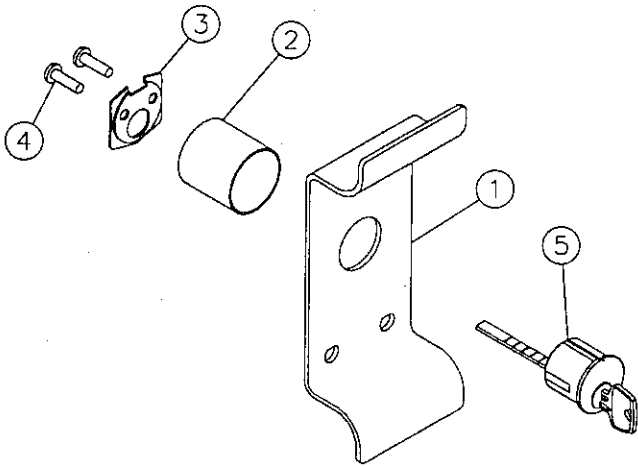
PULL TRIM
GTB & HTB

Parts List
Page No. REV.
28.8 A
2/2/2000

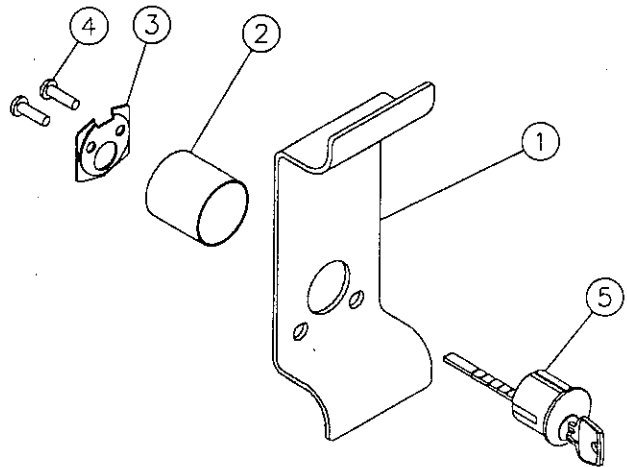
			TRIM ASSEMBLY LESS SCREW PACK
28-K-GTB	Ø4 FUNCTION	LHRB RHRB	28-2015
28-K-HTB	Ø4 FUNCTION	LHRB RHRB	28-2459

ITEM	ASSY NO.	PART NO.	DESCRIPTION	QTY
1		28-0031	GTB PULL *	1
		28-0101	HTB PULL *	
2		28-0025	CYLINDER SLEEVE	1
3		13-0086	CYLINDER BACK PLATE	1
4		01-1189	RETAINING SCREW	2
5		—	CYLINDER * Ø	1
		28-2017	SCREW PACK 1 3/4" DOORS * ☐	1
		28-2018	SCREW PACK 2 1/4" DOORS * ☐	

- * SPECIFY FINISH
- Ø SPECIFY #34 RIM CYLINDER BY KEYING REQUIREMENTS
- ☐ SPECIFY STANDARD OR FIRE RATED



28-K-HTB



28-K-GTB

HTB USED WITH 20 AND 30 SERIES
EXIT DEVICES MADE AFTER APRIL 07, 2000
AND 2700 MADE BEFORE APRIL 07, 2000

GTB USED WITH 2800 EXIT DEVICES
MADE BEFORE APRIL 07, 2000
AND ALL 5100 AND 5800 ALARMED EXITS

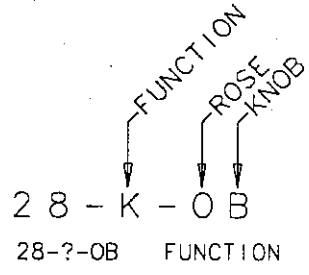
20 series
Parts List

KNOB TRIM
20 AND 30 SERIES
AND ALARMED EXITS
"28-K-OB"

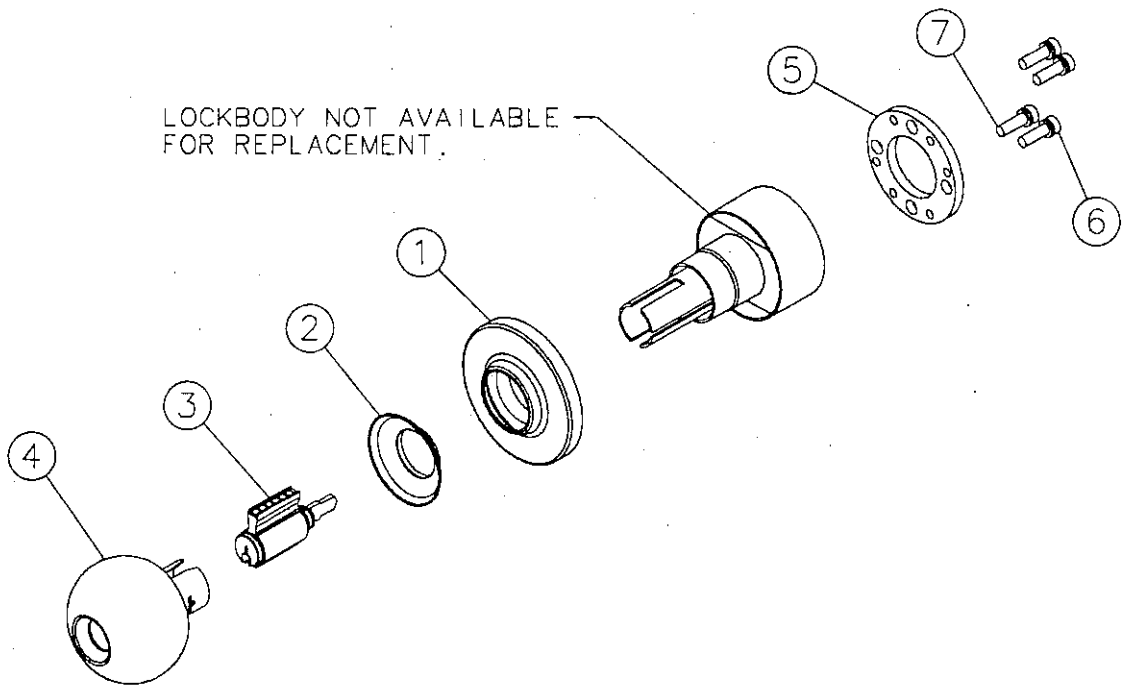
Parts List
Page No. 28.9 REV. A
2/2/2000

ITEM	ASSY NO.	PART NO.	DESCRIPTION	QTY
1		06-5006	OUTSIDE ROSE ASSEMBLY *	1
2		06-0512	COLLAR *	1
3		-----	CYLINDER * ϕ	1
4		06-0500	KNOB (CYLINDER) *	1
		06-0502	KNOB (PLAIN) *	
5		07-0116	MOUNTING PLATE	1
6		01-1358	SCREW (PLATE TO HOUSING) (10-32 X 5/8)	2
7		01-1204	SCREW (EXIT CHASSIS TO PLATE) (10-32 X 3/4)	2

* SPECIFY FINISH
 ϕ SPECIFY 6 LINE CYLINDER BY KEYING REQUIREMENTS.
 NOTE: TRIM AVAILABLE IN THE FOLLOWING PREFIXES: 10-, 10-21-, AND 21-
 NOTE: TRIM IS ONLY AVAILABLE WITH "O" ROSE AND "B" KNOB



	FUNCTION
K	04
C	13
L	15



30 series Parts List

3727
OR
3828

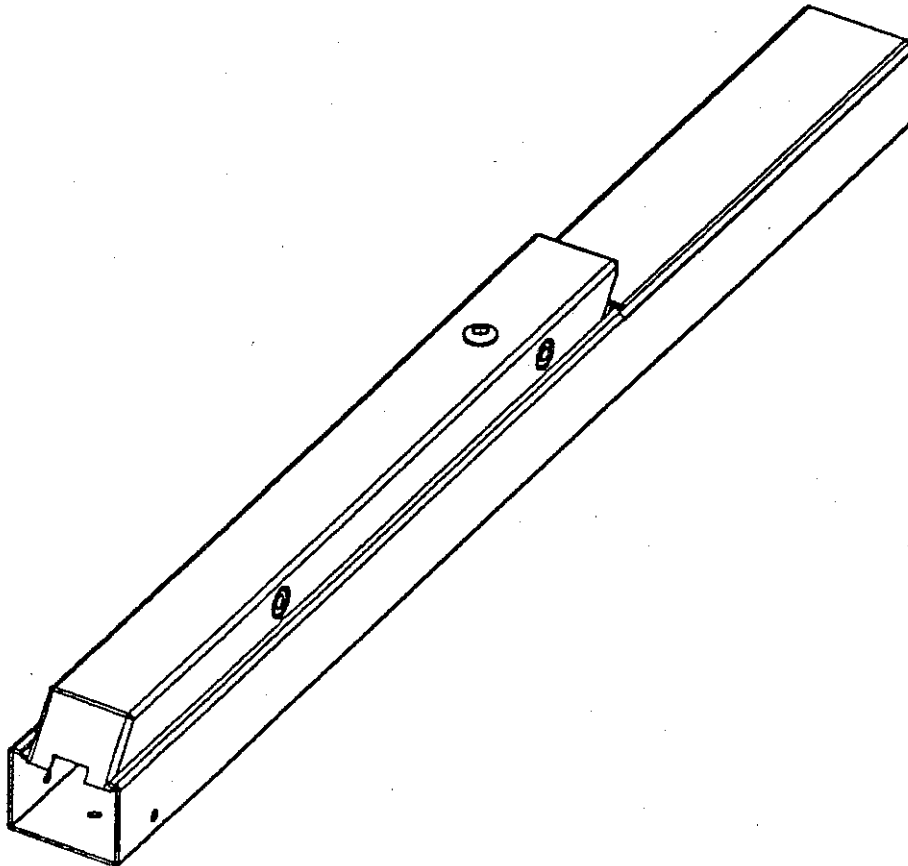
Parts List

Page No Rev
30.1 B
5/31/2002

RAIL ASSEMBLY LESS END CAP AND MOUNTING BRACKET

SIZE	DOOR WIDTH	CAM LOCKDOWN (NO PREFIX)	CYLINDER LOCKDOWN (16 PREFIX) *	FIRE EXIT HARDWARE (12 PREFIX)
E	24" TO 32"	28-2446	28-2452	28-2449
F	32" TO 36"	28-2447	28-2453	28-2450
G	36" TO 48"	28-2448	28-2454	28-2451

* FOR CYLINDER LOCKDOWN ADD 2" TO MIN DOOR SIZES STATED .



30 series
Parts List

3727
OR
3828

Parts List

Page No. REV.

30.2A C

5/31/2002

RAIL ASSEMBLY
LESS END CAP
& MOUNTING BRACKET

3727 AND 3828	STANDARD DOGGING RAIL	E F G	28-2446 28-2447 28-2448
---------------------	-----------------------------	-------------	-------------------------------

ITEM	ASSY NO.	PART NO.	DESCRIPTION	QTY
1		28-0110	END CAP *	1
2		68-0736	PUSH RAIL (E) *	1
		68-0737	PUSH RAIL (F) *	
		68-0738	PUSH RAIL (G) *	
3		01-0098	RETAINING RING	2
4		68-0229	PIVOT PIN PUSH RAIL W/ "D" *	2
		68-1442	PIVOT PIN PUSH RAIL W/O "D" *	
5		68-3609	CONNECTING ARM ASSEMBLY	2
6	28-2446 (E)	68-0945	PIVOT PIN MOUNTING RAIL	2
7	28-2447 (F)	68-0943	BRACKET CONNECTING ARM	2
8		01-1236	SCREW #6-32 X 3/8 *	4
9	28-2448 (G)	68-0950	MOUNTING RAIL (E) *	1
		68-0951	MOUNTING RAIL (F) *	
		68-0949	MOUNTING RAIL (G) *	
10		68-0236	SPRING	2
11		68-0550	MOUNTING RAIL INSERT (E) *	1
		68-0549	MOUNTING RAIL INSERT (F) *	
		68-0551	MOUNTING RAIL INSERT (G) *	
12		68-2596	LOCKDOWN BUTTON KIT	1
13		01-1141	SCREW #8-32 X 3/8 *	4
14		68-3367	MOUNTING PLATE PACK	1

* SPECIFY PAINTED FINISH

THIS PAGE MUST FACE 30.2B

30 series Parts List

3727
OR
3828

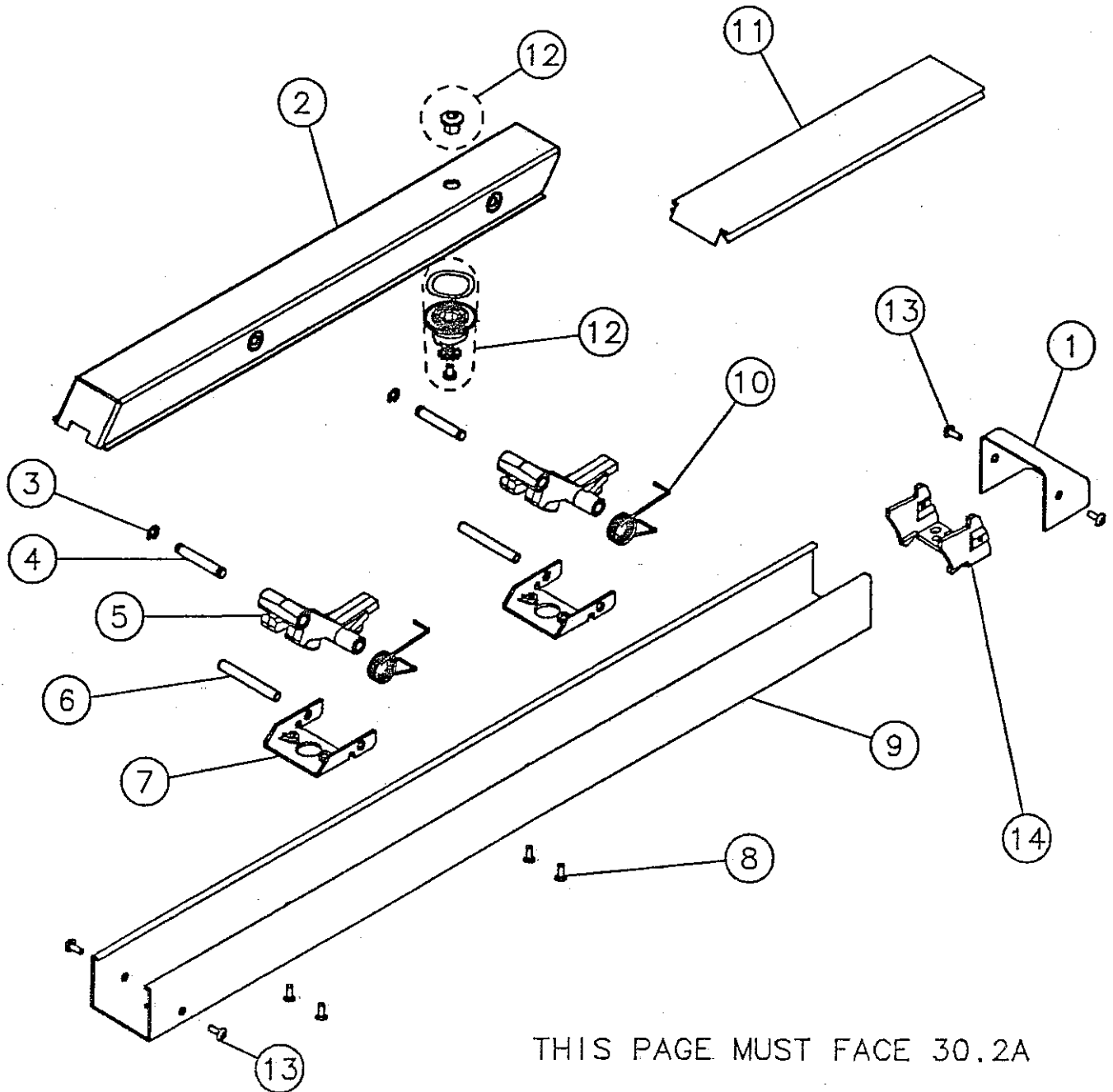
Parts List

Page No. 30.2B REV. C

5/31/2002

RAIL ASSEMBLY
LESS END CAP
& MOUNTING BRACKET

3727 AND 3828	STANDARD DOGGING RAIL	E F G	28-2446 28-2447 28-2448
---------------------	-----------------------------	-------------	-------------------------------



THIS PAGE MUST FACE 30.2A

30 series
Parts List

16-3727
OR
16-3828

Parts List
Page No. REV.
30.3A C
5/31/2002

			RAIL ASSEMBLY LESS END CAP & MOUNTING BRACKET
16-3727 AND 16-3828	CYLINDER DOGGING RAIL	E F G	28-2452 28-2453 28-2454

ITEM	ASSY NO.	PART NO.	DESCRIPTION	QTY
1		28-0110	END CAP *	1
2		68-0736	PUSH RAIL (E) *	1
		68-0737	PUSH RAIL (F) *	
		68-0738	PUSH RAIL (G) *	
3		01-0098	RETAINING RING	2
4		68-0229	PIVOT PIN PUSH RAIL W/ "D" *	2
		68-1442	PIVOT PIN PUSH RAIL W/O "D" *	
5		68-3609	CONNECTING ARM ASSEMBLY	2
6		68-0945	PIVOT PIN MOUNTING RAIL	2
7		68-0943	BRACKET CONNECTING ARM	2
8		01-1236	SCREW #6-32 X 3/8 *	4
9	28-2452 (E)	68-0950	MOUNTING RAIL (E) *	1
		68-0951	MOUNTING RAIL (F) *	
	28-2453 (F)	68-0949	MOUNTING RAIL (G) *	
10		68-0236	SPRING	2
11	28-2454 (G)	68-3001	MOUNTING RAIL INSERT ASSY (F) *	1
		68-3003	MOUNTING RAIL INSERT ASSY (E & G) *	
12		01-0798	HOLE PLUG *	1
13		68-0772	FILLER	1
14		01-1220	SCREW #6-32 X 3/8	4
15		68-3020	LOCKDOWN CAM ASSEMBLY	1
16		01-1141	SCREW #8-32 X 3/8 *	4
17		68-3367	MOUNTING PACK INCLUDES ITEM 17	1
18		68-0701	CYLINDER NUT	1
19		97-0349	CYLINDER RING #41 CYLINDER *	1
20		_____	CYLINDER * ϕ	1

* SPECIFY PAINTED FINISH

ϕ SPECIFY #41 CYLINDER BY KEYING REQUIREMENTS

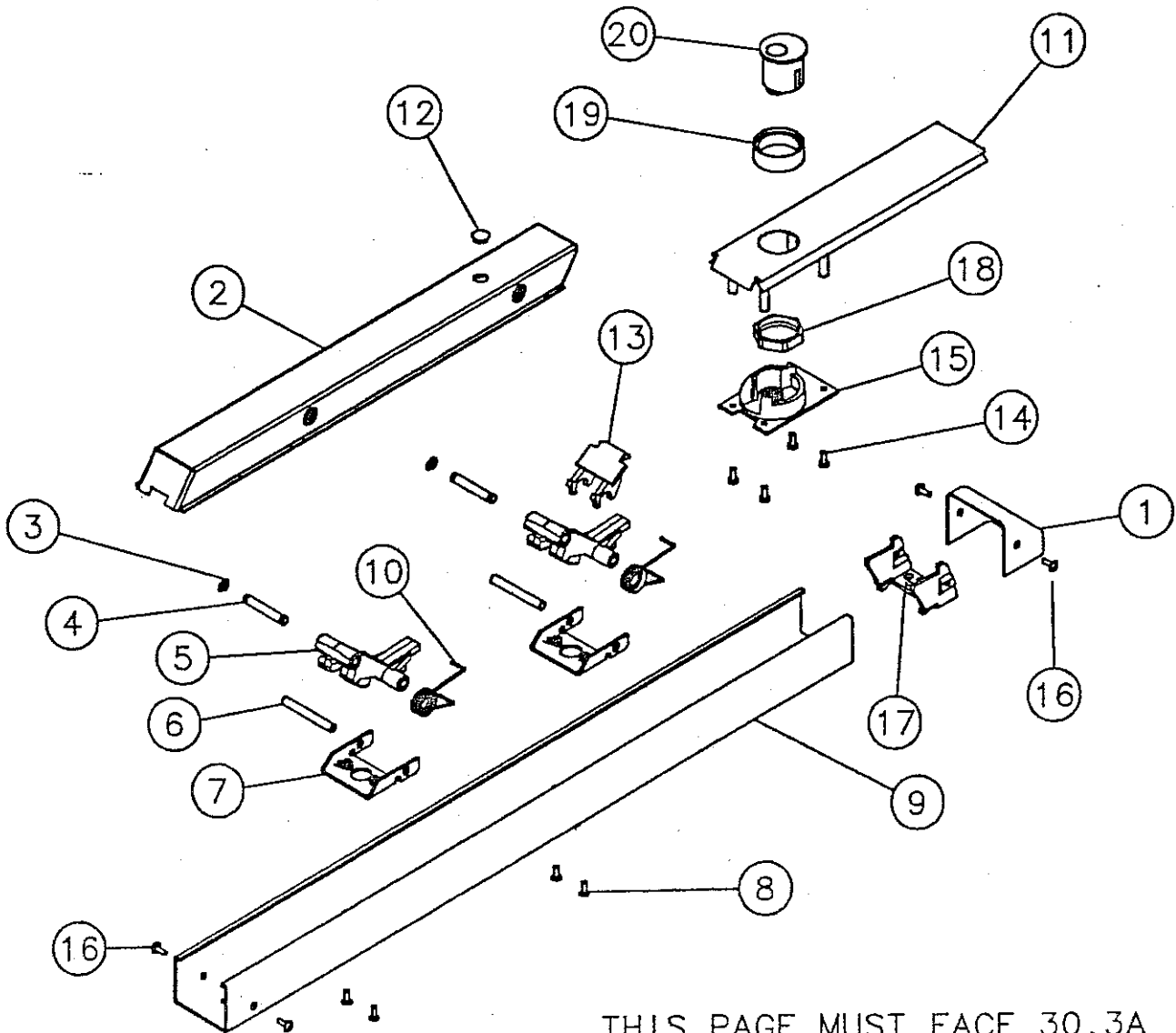
THIS PAGE MUST FACE 30.3B

30 series Parts List

16-3727
OR
16-3828

Parts List
Page No. REV.
30.3B C
5/31/2002

RAIL ASSEMBLY LESS END CAP & MOUNTING BRACKET			
16-3727 AND 16-3828	CYLINDER DOGGING RAIL	E F G	28-2452 28-2453 28-2454



THIS PAGE MUST FACE 30.3A

30 series Parts List

12-3727
AND
12-3828

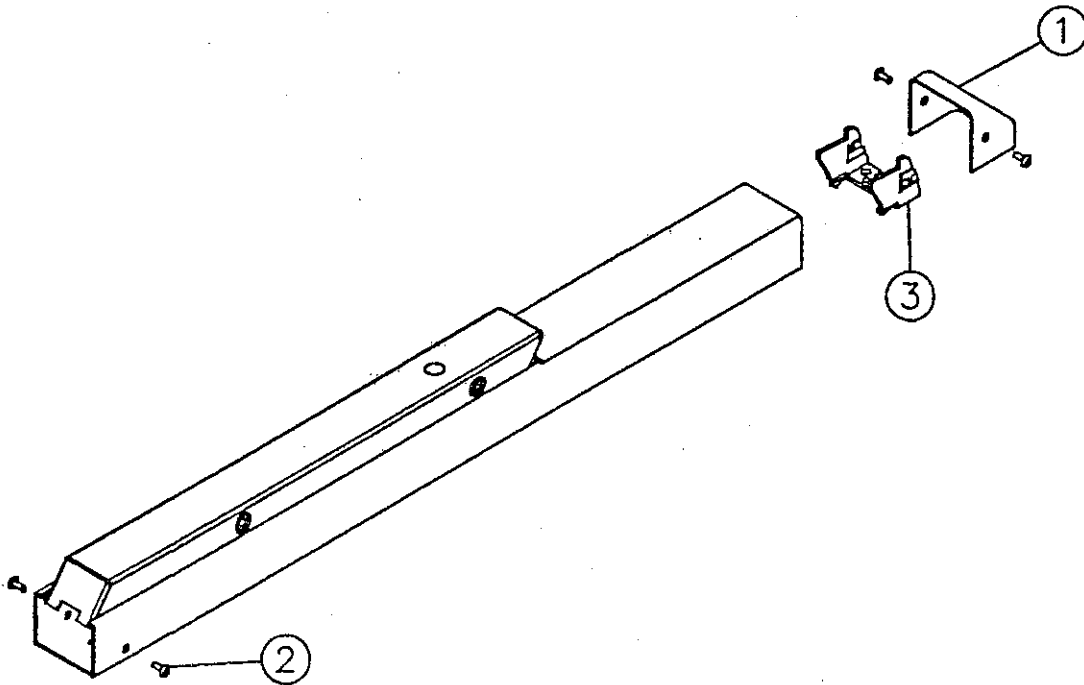
Parts List

Page No. REV.
30.4 C
5/31/2002

		RAIL ASSEMBLY LESS END CAP & MOUNTING BRACKET	
12-3727	FIRE RATED	E	28-2449
AND	NO DOGGING	F	28-2450
12-3828	RAIL	G	28-2451

ITEM	PART NO.	DESCRIPTION	QTY
1	28-0110	END CAP *	1
2	01-1141	SCREW #8-32 X 3/8 *	4
3	68-3367	MOUNTING PACK	1

* SPECIFY PAINTED FINISH



30 series Parts List

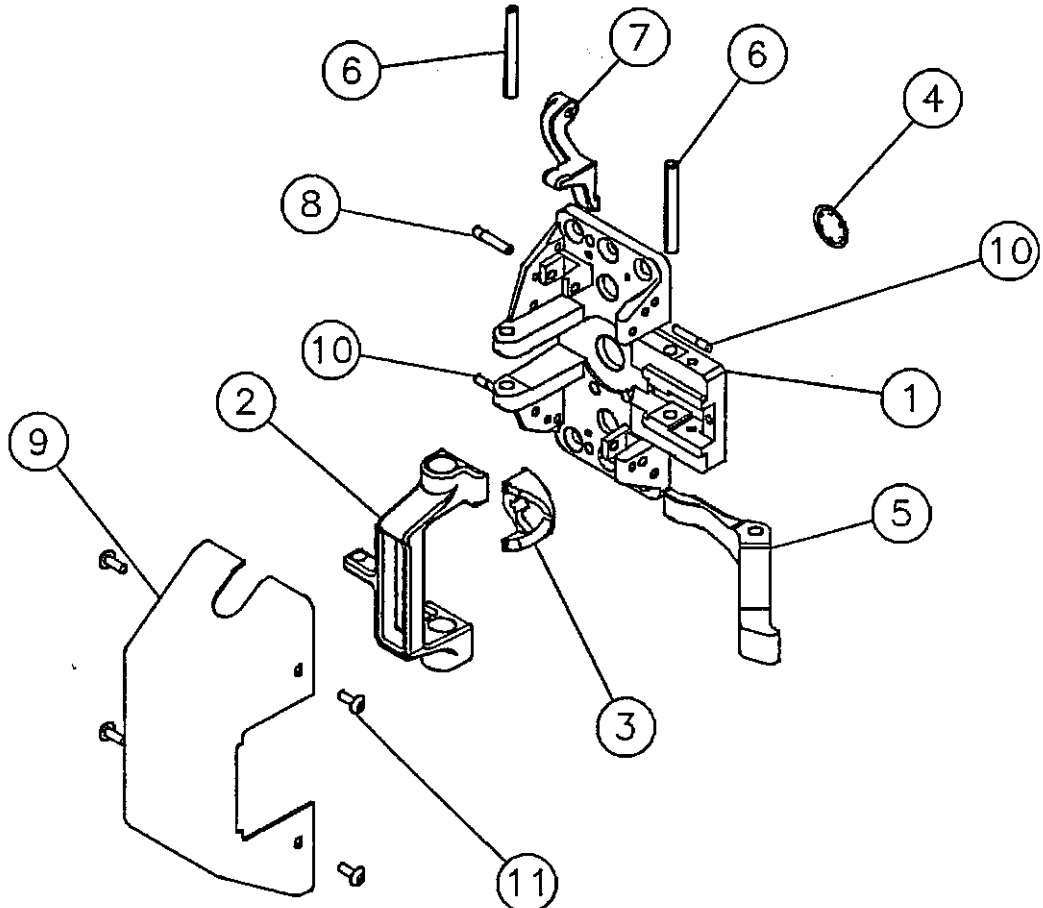
3727

Parts List
Page No. REV.
37.1 B
05/06/04

			CHASSIS ASSEMBLY LESS COVER
3727	ALL FUNCTIONS	LHRB RHRB	28-2427 28-2428

ITEM	ASSY NO.	PART NO.	DESCRIPTION	QTY
1		28-0125	CHASSIS	1
2		28-0035	MAIN SLIDE	1
3		28-0109	CAM	1
4		01-9167	RETAINING RING	1
5		68-0241	LIFT ARM	1
6		01-4512	PIVOT PIN	2
7		28-0036	LIFT LEVER	1
8		28-0026	PIVOT PIN (LIFT LEVER)	1
9		28-0116	COVER *	1
10		28-0037	SLIDE GUIDE PIN	2
11		01-1141	COVER SCREW (6-32 X 3/8) *	4
		68-1320	SCREW PACK	1

* SPECIFY FINISH



(4 PLACES)

30 series Parts List

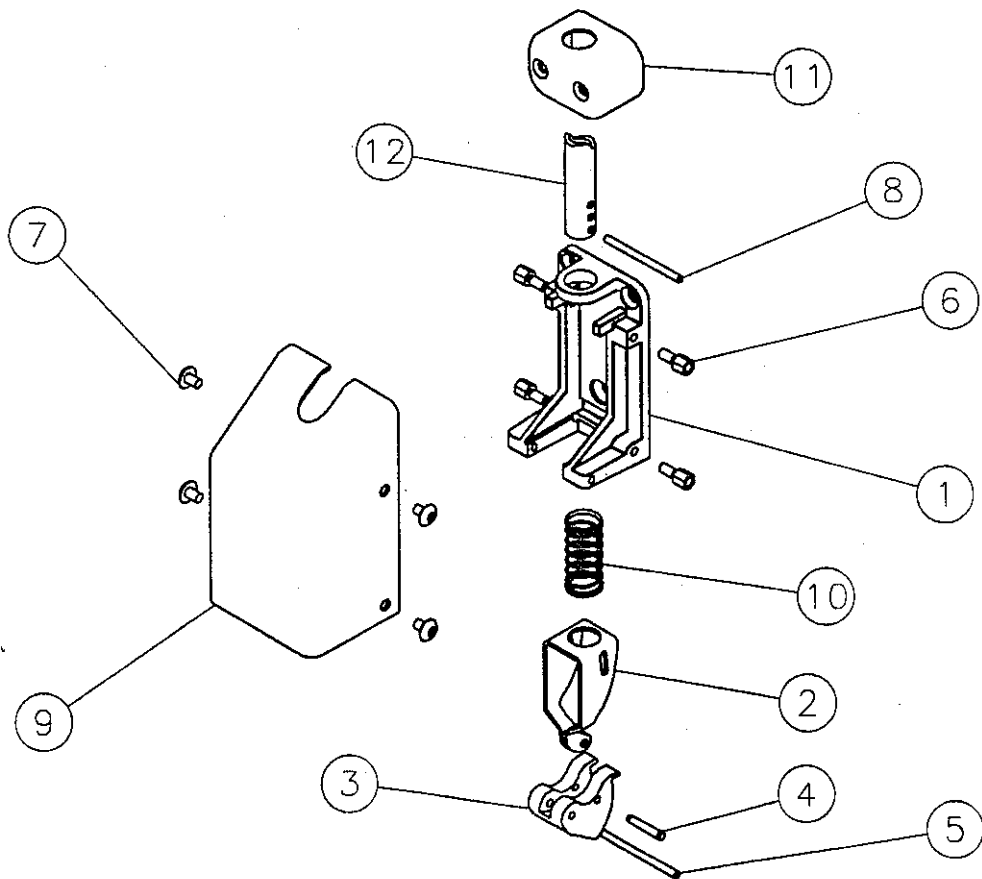
3727

Parts List
Page No. REV.
37.2 A
01/19/00

			CHASSIS ASSEMBLY WITH COVER
3727	ALL FUNCTIONS	LHRB RHRB	28-2491

ITEM	ASSY NO.	PART NO.	DESCRIPTION	QTY
1	97-2038	97-0025	CHASSIS (BOTTOM)	1
2		97-0035	RETRACTOR	1
3		97-0053	LATCHBOLT	1
4		97-0048	PIVOT PIN (LATCHBOLT)	1
5		68-1094	SPIROL PIN	1
6		01-4514	STANDOFF	4
7		01-4515	MACHINE SCREW (TRUSS HEAD)*	4
8		97-0048	BOTTOM ROD ADJ. PIN	1
9		28-0119	COVER *	1
10		97-0101	SPRING	1
11		97-0020	ROD GUIDE*	1
12		97-0034	BOTTOM ROD* SPECIFY W/WD THRESHOLD AND CROSS BAR HEIGHT	1
		68-2113	SCREW PACK BOTTOM AND TOP CASES	1
		624	STD. BOTTOM STRIKE PACK	1

* SPECIFY FINISH



30 series Parts List

3727

Parts List

Page No. REV.

37.3 A

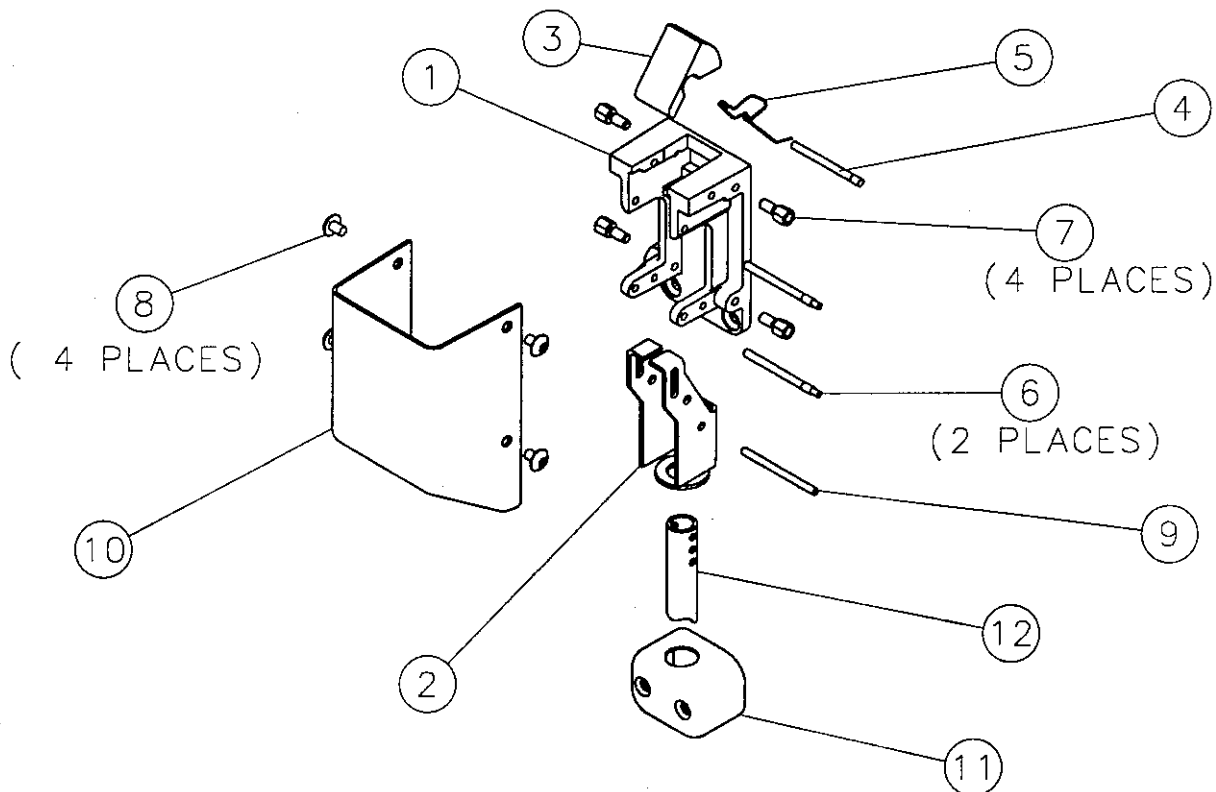
01/19/00

CHASSIS ASSEMBLY
WITH COVER

3727	ALL FUNCTIONS	LHRB RHRB	2B-2494
------	---------------	--------------	---------

ITEM	ASSY NO.	PART NO.	DESCRIPTION	QTY
1	97-2433	97-0295	CHASSIS (TOP)	1
2		97-0298	TOP SLIDE	1
3		97-0296	LATCHBOLT	1
4		97-0294	PIVOT PIN (LATCHBOLT)	1
5		97-0300	SPRING	1
6		97-0046	TOP CASE RETAINING PIN	2
7		01-4514	STANDOFF	4
8		01-4515	MACHINE SCREW (TRUSS HEAD)*	4
9		97-0048	BOTTOM ROD ADJ. PIN	1
10		28-0119	COVER *	1
11		97-0020	ROD GUIDE*	1
12		97-0034	TOP ROD* SPECIFY W/WO THRESHOLD AND CROSS BAR HEIGHT	1
		68-2113	SCREW PACK BOTTOM AND TOP CASES	1
		629	STD. TOP STRIKE PACK	1

* SPECIFY FINISH



30 series Parts List

12-3727

Parts List

Page No. REV.

37.4 A

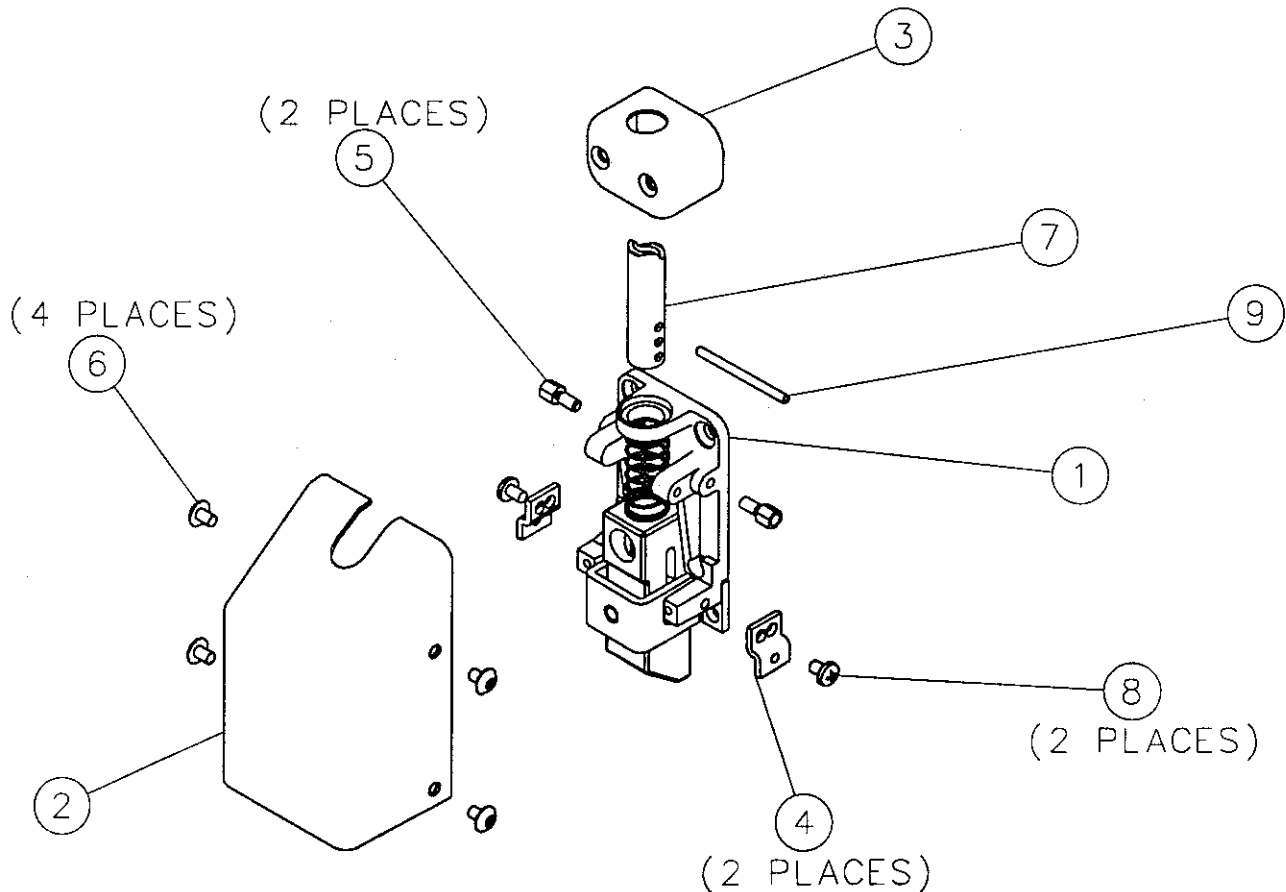
01/19/00

CHASSIS ASSEMBLY WITH COVER

12-3727	ALL FUNCTIONS	LHRB RHRB	28-2492
---------	---------------	--------------	---------

ITEM	ASSY NO.	PART NO.	DESCRIPTION	QTY
1		97-2002	CHASSIS ASSEMBLY (BOTTOM)	1
2		28-0119	COVER*	1
3		97-0020	ROD GUIDE*	1
4		28-0127	COVER BRACKET	2
5		01-4514	STANDOFF	4
6		01-4515	MACHINE SCREW (TRUSS HEAD)*	4
7		97-0034	BOTTOM ROD* SPECIFY W/WO THRESHOLD AND CROSS BAR HEIGHT	1
8		01-3595	MACHINE SCREW (ROUND HEAD)	2
9		97-0048	BOTTOM ROD ADJ. PIN	1
		68-2113	SCREW PACK BOTTOM AND TOP CASES	1
		646	ADJUSTABLE STRIKE PACK	1
		655	FLAT STRIKE PACK	1

* SPECIFY FINISH



30 series Parts List

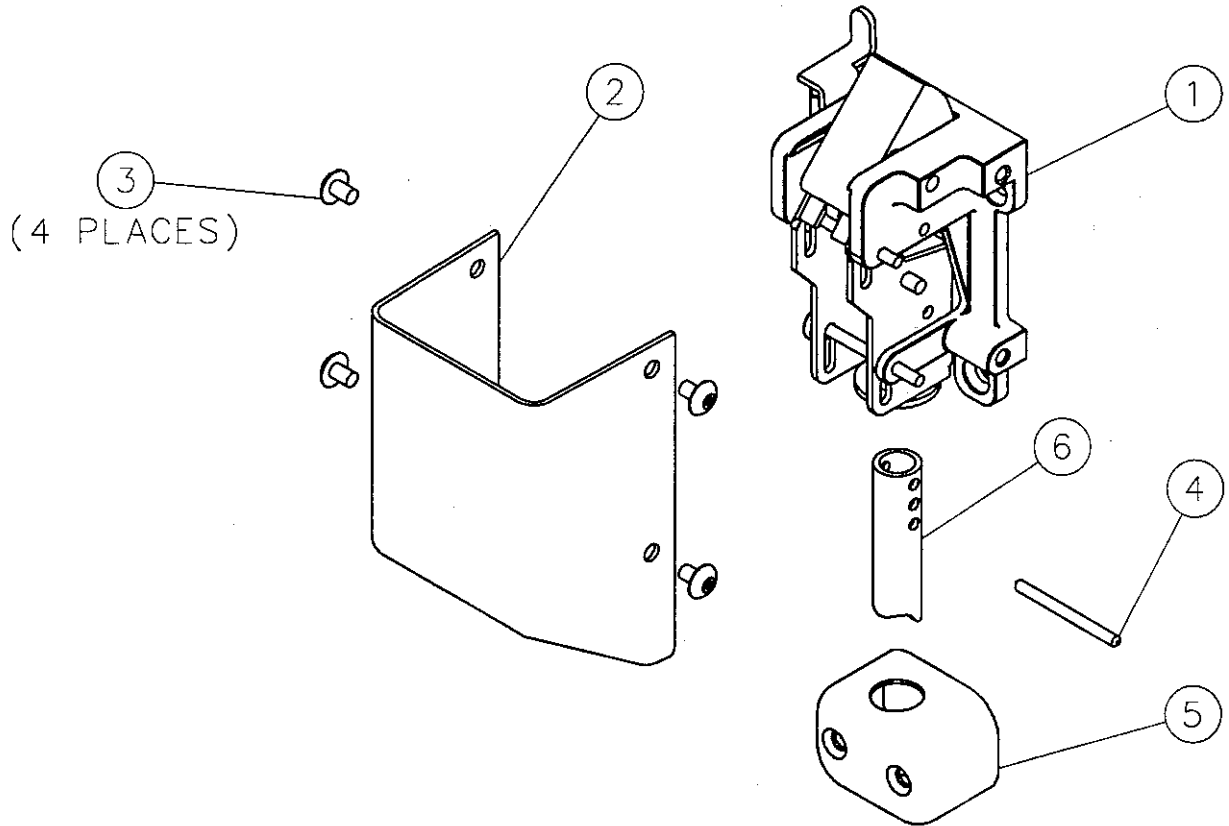
12-3727

Parts List
Page No. 37.5
REV. A
01/19/00

		CHASSIS ASSEMBLY WITH COVER	
12-3727	ALL FUNCTIONS	LHRB RHRB	28-2493

ITEM	ASSY NO.	PART NO.	DESCRIPTION	QTY
1		97-2963	CHASSIS ASSEMBLY (TOP)	1
2		28-0119	COVER *	1
3		01-4515	MACHINE SCREW (TRUSS HEAD) *	4
4		97-0048	BOTTOM ROD ADJ. PIN	1
5		97-0020	ROD GUIDE *	1
6		97-0034	TOP ROD * SPECIFY W/NO THRESHOLD AND CROSS BAR HEIGHT	1
		68-2113	SCREW PACK BOTTOM AND TOP CASES	1
		646	STD. TOP STRIKE PACK	1

* SPECIFY FINISH



30 series Parts List

3828

Parts List

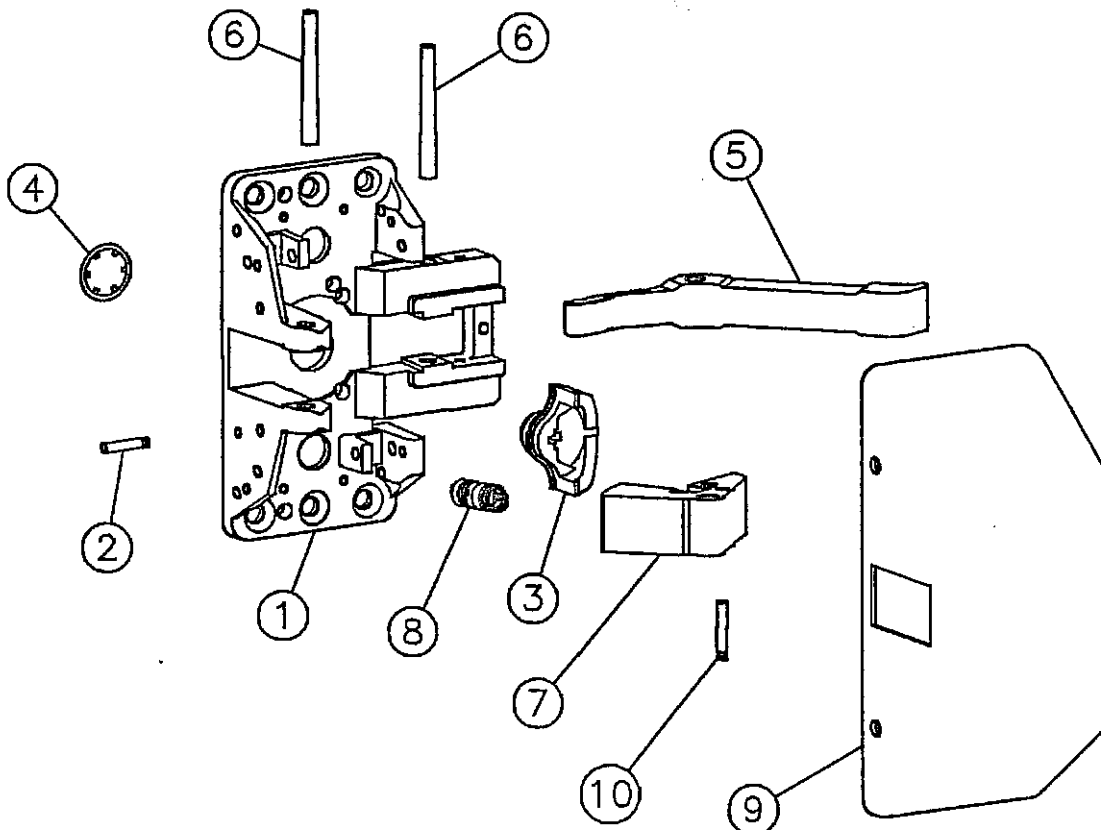
Page No. REV.
38.1 B

05/06/04

			CHASSIS ASSEMBLY LESS COVER
3828	ALL FUNCTIONS	LHRB RHRB	28-2408

ITEM	ASSY NO.	PART NO.	DESCRIPTION	QTY
1		28-0125	CHASSIS	1
2		01-0009	GROOV-PIN	1
3		28-0109	CAM	1
4		01-9167	RETAINING RING	1
5		68-0241	LIFT ARM	1
6		01-4512	PIVOT PIN	2
7		68-1362	LATCHBOLT	1
8		98-0028	LATCHBOLT SPRING	1
9		28-0111	COVER *	1
10		01-0009	GROOV-PIN	1
		01-1141	COVER SCREW (6-32 x 3/8)*	4
		28-2026	SCREW PACK	1

* SPECIFY FINISH



30 series Parts List

3828

Parts List

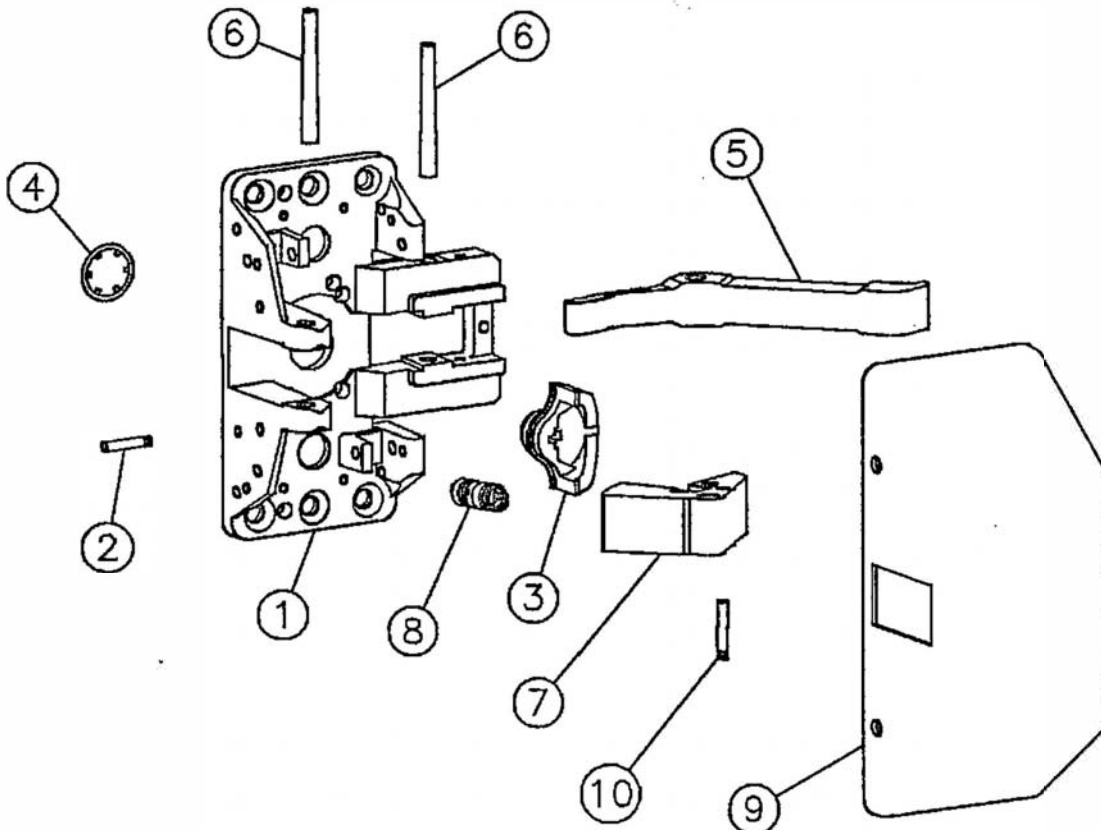
Page No. REV.
38.1 C

04/05/18

		CHASSIS ASSEMBLY LESS COVER	
3828	ALL FUNCTIONS	LHRB RHRB	28-2408

ITEM	ASSY NO.	PART NO.	DESCRIPTION	QTY
1		28-0125	CHASSIS	1
2		01-0009	GROOV-PIN	1
3		28-0109	CAM	1
4		01-0005	RETAINING RING	1
5		68-0241	LIFT ARM	1
6		01-4512	PIVOT PIN	2
7		68-1362	LATCHBOLT	1
8		98-0028	LATCHBOLT SPRING	1
9		28-0111	COVER *	1
10		01-0009	GROOV-PIN	1
		01-1141	COVER SCREW (6-32 x 3/8) *	4
		28-2026	SCREW PACK	1

* SPECIFY FINISH



30 series
Parts List

12-3828

Parts List
Page No. REV.
38.2 A
01/20/00

			CHASSIS ASSEMBLY LESS COVER
12-3828	ALL FUNCTIONS	LHRB RHRB	28-2409

ITEM	ASSY NO.	PART NO.	DESCRIPTION	QTY
1		28-2409	CHASSIS ASSEMBLY	1
2		28-0111	COVER *	1
3		01-1141	MACHINE SCREW (TRUSS HEAD) *	4
		28-2064	SCREW PACK	1
		68-2347	STRIKE PACK	1

* SPECIFY FINISH

