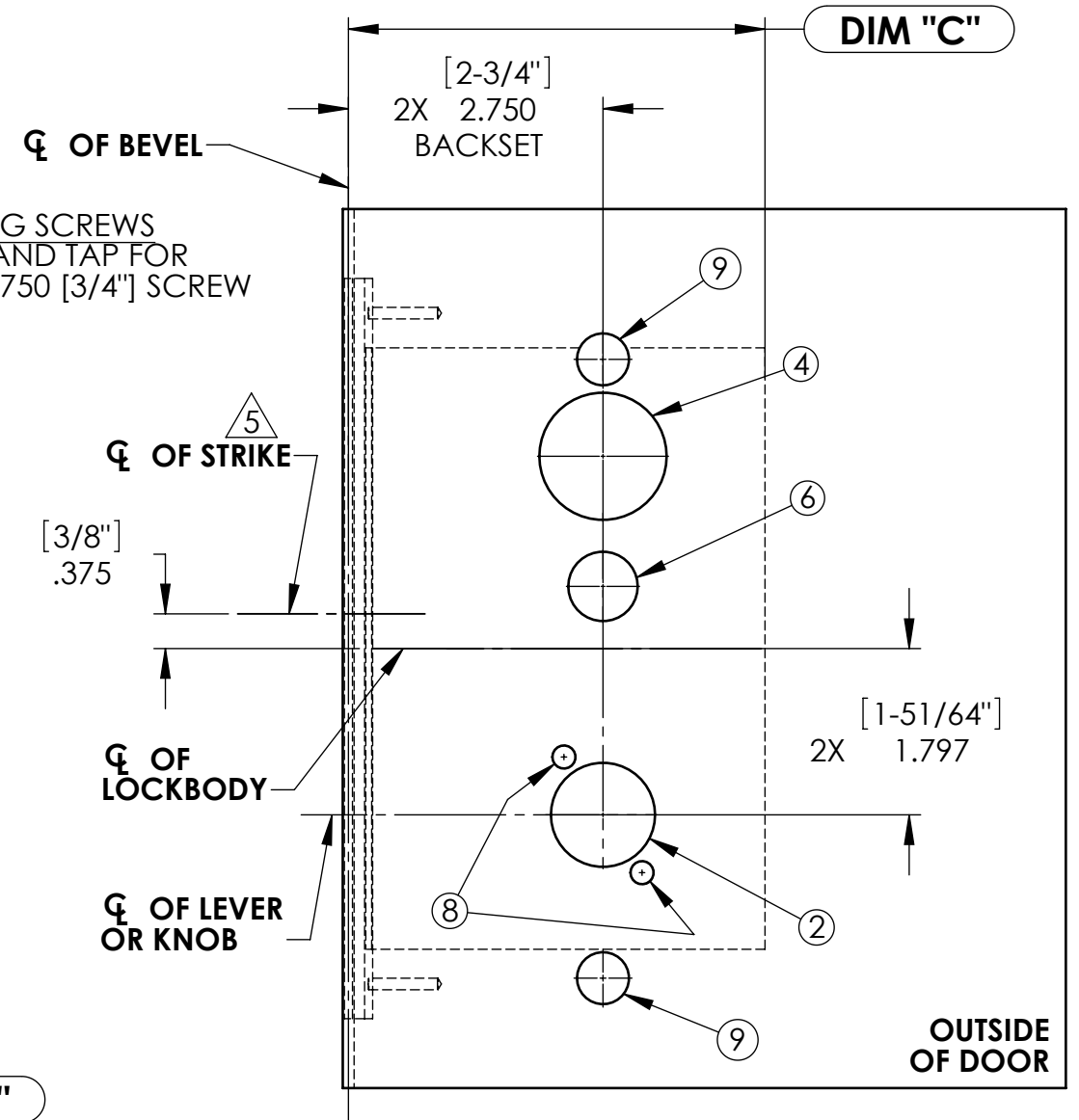
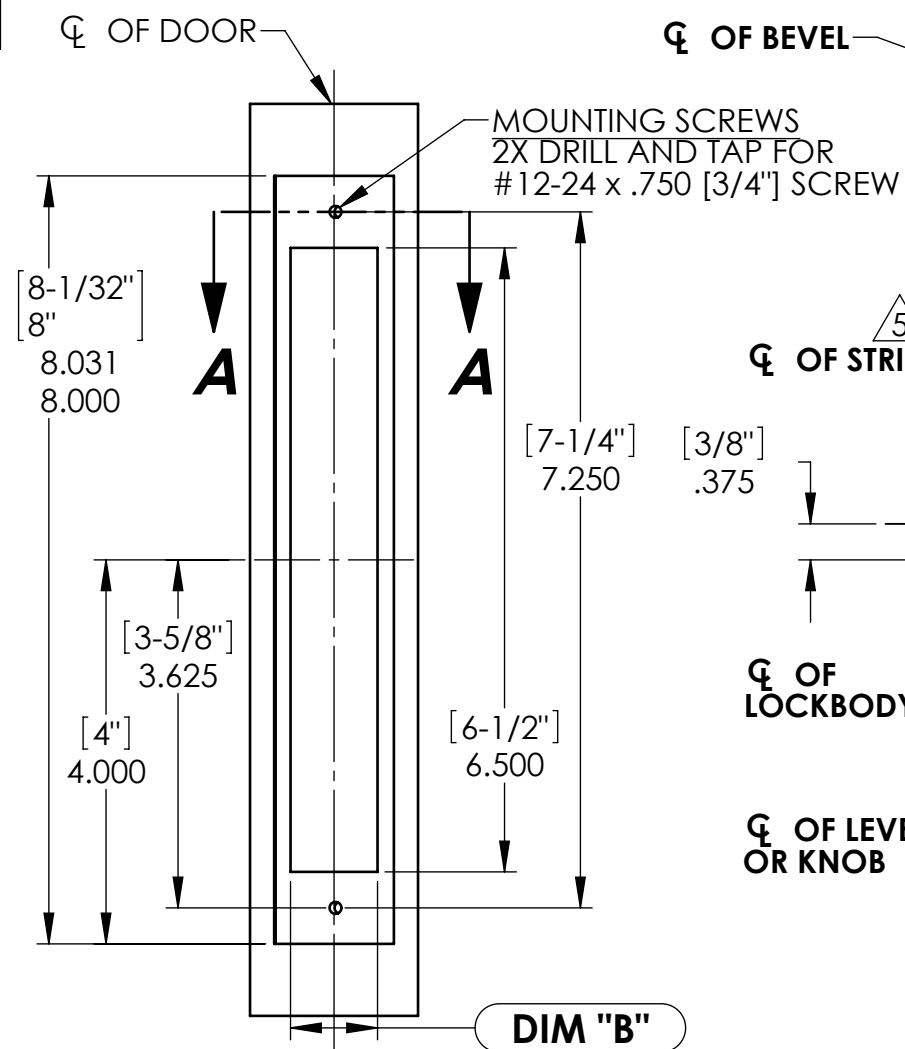
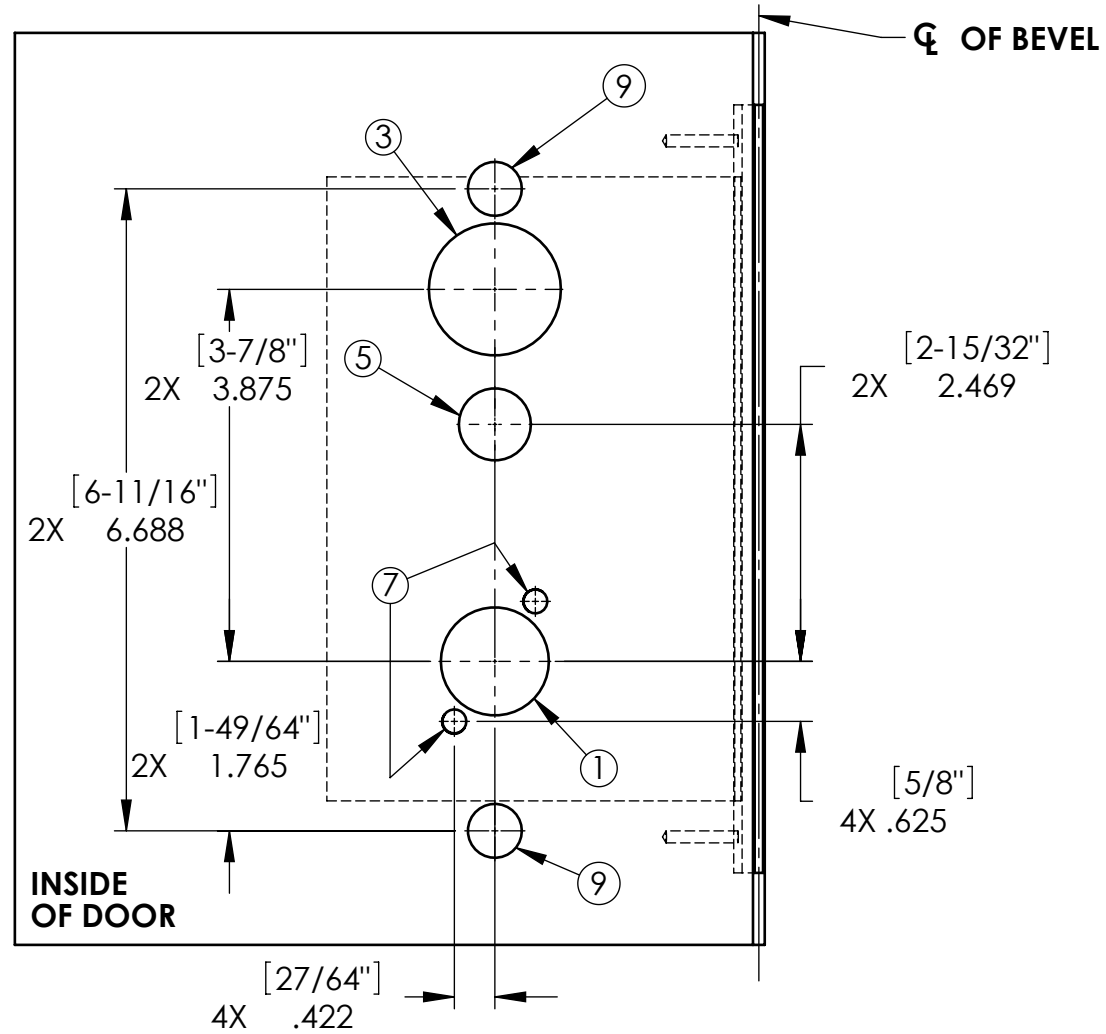
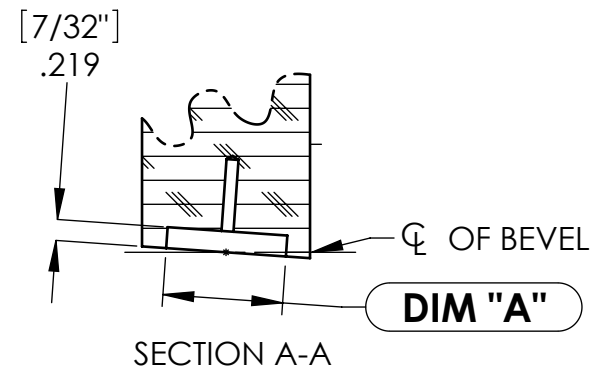


REQUIRED HOLES

FUNCTION	1	2	3	4	5	6	7	8	9
	1.125 [1-1/8"] DIA.	1.125 [1-1/8"] DIA.	1.375 [1-3/8"] DIA.	1.375 [1-3/8"] DIA.	.750 [3/4"] DIA.	.750 [3/4"] DIA.	.250 [1/4"] DIA.	.250 [1/4"] DIA.	.562 [9/16"] DIA.
04,37	■	■		■		■	■	■	■
05,24,25	■	■		■	■	■	■	■	■
17,26,38,39,40	■	■	■	■		■	■	■	■
31,35,36		■		■		■		■	■
65,66	■	■			■	■	■	■	■



SARGENT ASSA ABLOY	SARGENT Manufacturing Company 100 Sargent Drive New Haven, CT 06511	
	TEMPLATE: MORTISE LOCK 8200 SERIES: (FREE WHEELING) METAL DOOR	RELEASE DATE 05-MAY-2010
		TEMPLATE NO. 4500 J