

# BioStation L2

Fingerprint IP Access terminal



Suprema BioStation L2 is an essential fingerprint terminal that provides comprehensive access control and time attendance features based on Suprema's next generation biometric technology and security platform. Designed for all type of time-attendance applications, BioStation L2 provides exceptional value by combining World's best Suprema fingerprint algorithm, high performance and enhanced security features.

# BioStation L2

## Fingerprint IP Access terminal

### Features



#### Best-in-class Performance

- Latest Suprema algorithm
- 1.2GHz Quad-Core CPU
- Up to 150,000 matches per second (genuine)



#### Improved Accuracy & Security

- New advanced LFD (live finger detection) technique
- Improved OP5 optical sensor and algorithm



#### Expanded Capacity

- Max. 500k users / 1 million text logs
- Large memory: 2GB Flash + 256 MB RAM



#### Full Time Attendance Features

- 2-inch color LCD with intuitive GUI
- Full time and attendance functionality
- 3 x 4 numeric touch keypad



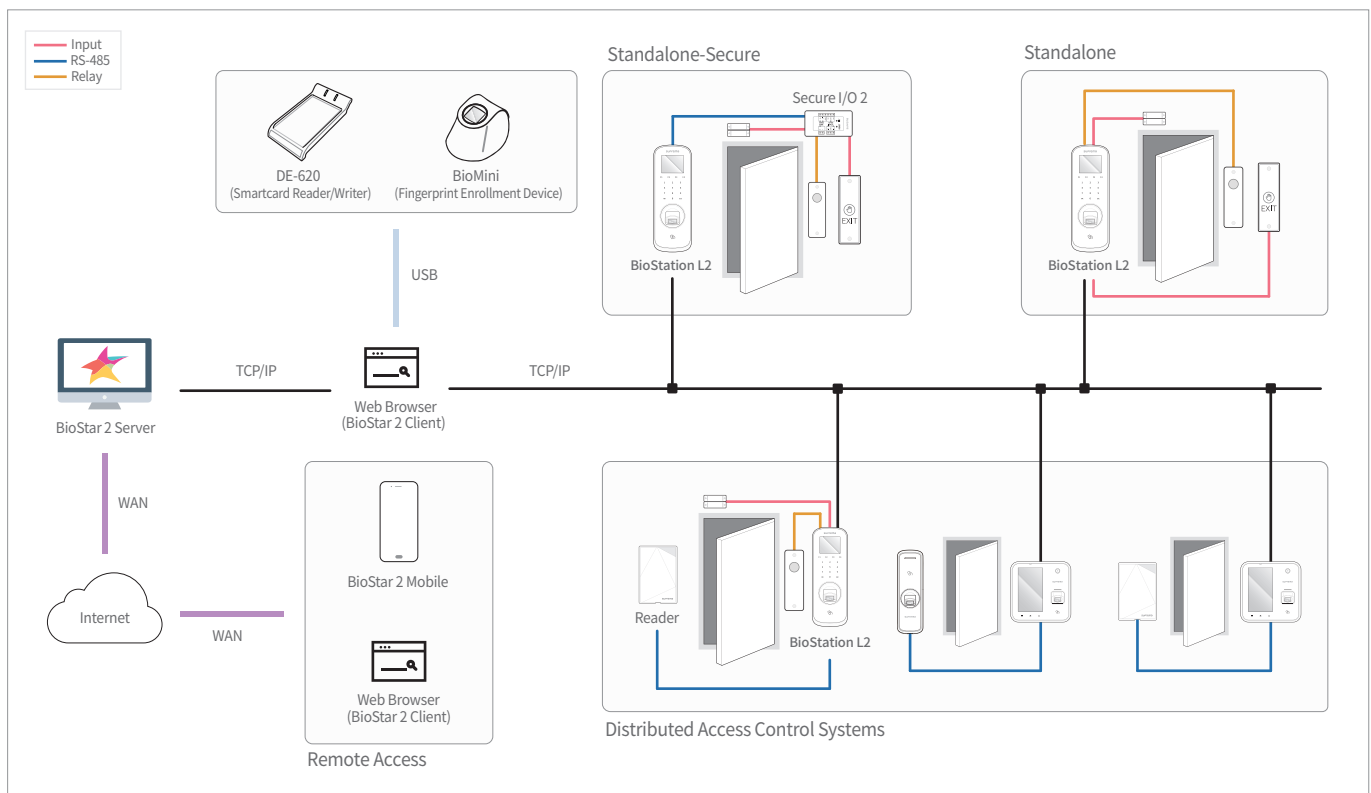
#### Versatile Interfaces / RF options

- Wiegand, RS485, TTL I/O, relay
- 125KHz EM
- 13.56 MHz Mifare / DESFire / DESFire EV1 / FeliCa / NFC

### Specifications

Biometric	Fingerprint
Template	SUPREMA/ISO 19794-2/ANSI 378
Extractor / Matcher	MINEX certified and compliant
LFD	Supported
RF Option	125 KHz EM 13.56 MHz Mifare / DESFire / DESFire EV1 / FeliCa / NFC
CPU	1.2 GHz Quad-Core
Memory	2GB Flash + 256 MB RAM
Max. User	500,000 (1:1), 100,000(1:N)
Max. Template	1,000,000(1:1), 200,000(1:N)
Max. Logs	1,000,000(text)
LCD	2-inch color LCD
Sound	16-bit Hi-Fi
Ethernet	10 / 100 Mbps, auto MDI / MDI-X
RS-485	1ch host or slave (selectable)
Wiegand	1ch input or output (selectable)
TTL	2ch input
Relay	1 Relay
Tamper	Supported
Power	DC 12V
Operating Temperature	-20°C ~ 50°C (-4°F ~ 122°F)
Operating Humidity	0% ~ 80%, non-condensing
Dimensions (WxHxD, mm)	71 x 201 x 44 (bottom) / 34 mm(top) (2.80" x 7.91" x 1.7"(bottom) / 1.34"(top)
Unit Weight	Device: 280g (0.62lb) Bracket: 61g (0.13lb) including washers/bolts
Certificates	CE, FCC, KC, RoHS, REACH, WEEE

### System Configurations



**Suprema**  
BIOMETRICS & SECURITY

#### Suprema Inc.

17F Parkview Tower, 248, Jeongjail-ro, Bundang-gu, Seongnam-si, Gyeonggi-do, 13554, Rep. of KOREA

Tel: +82 31 783 4502 | Fax: +82 31 783 4503 | Inquiry: sales@supremainc.com | www.supremainc.com

©2018 Suprema Inc. Suprema and identifying product names and numbers herein are registered trademarks of Suprema, Inc. All non-Suprema brands and product names are trademarks or registered trademarks of their respective companies. Product appearance, build status and/or specifications are subject to change without notice.

[AHL-BSL2-180110-03-EN]