

The Primex SOHO Pro™ WiFi transparent Media Panels bring fiber inside and forms the center piece of the connected home. Its flexible design provides a convenient, lockable and centralized location for easy installation and distribution of multi-play and smart home services within residential and commercial premises.



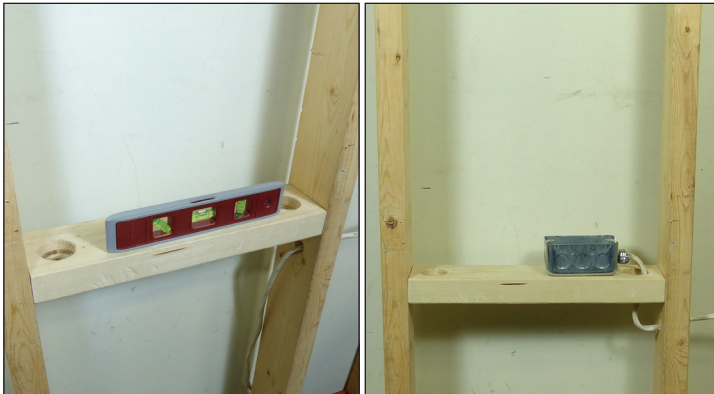
SOHO PRO™ INSTALLATION (P3000 SHOWN)

STEP 1

Install horizontal joist and gang box

To ensure a comfortable working height it is recommended that the top of the gang box be installed 36" from the ground using a level.

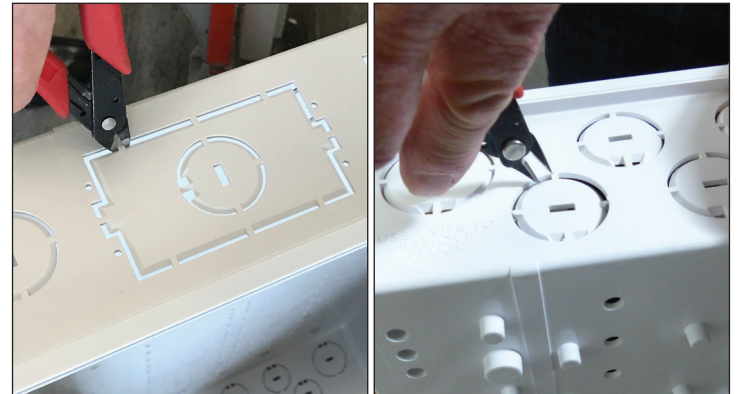
Note: Leave at least a 2" buffer zone around base to keep clear from perpendicular walls.



STEP 2

Remove knock outs

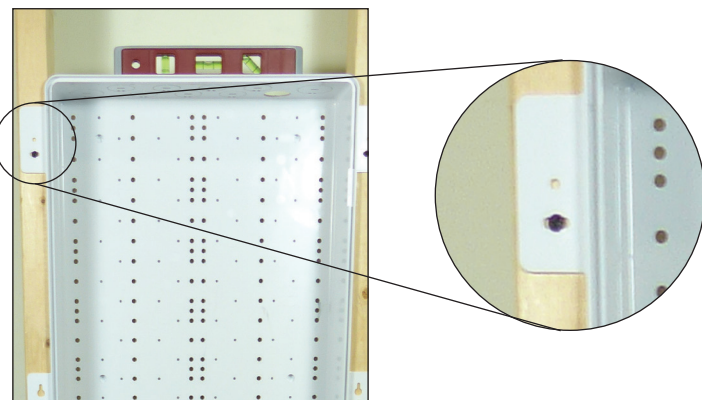
Prior to installation, remove the knockouts for the conduit and electrical box using a flush cutter tool.



STEP 3

Install base over top of the gang box using No. 8 flat head screws

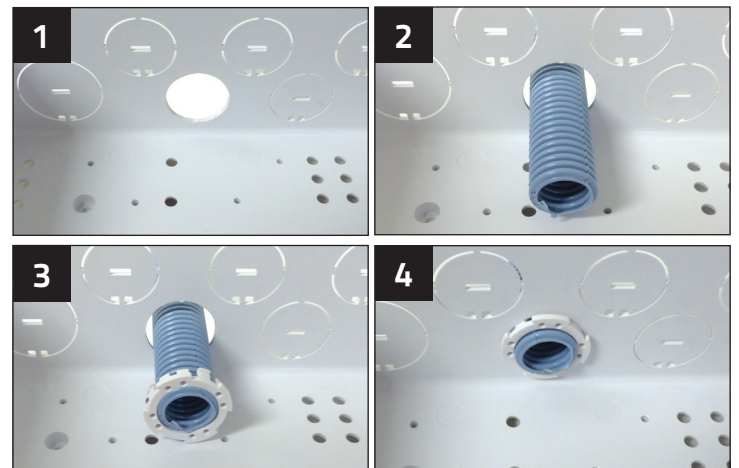
Install single screw in corner flange, level, then secure with additional screws.



STEP 4

Install conduit and adapter

At this stage, connect conduit for outgoing and incoming services and secure with Primex conduit adapters.



FOR MORE INFORMATION CONTACT:

📞 1.604.881.7875 📠 1.604.881.7835

www.primex.com

primex Fit everything. Together.

STEP 5

Measure installation position

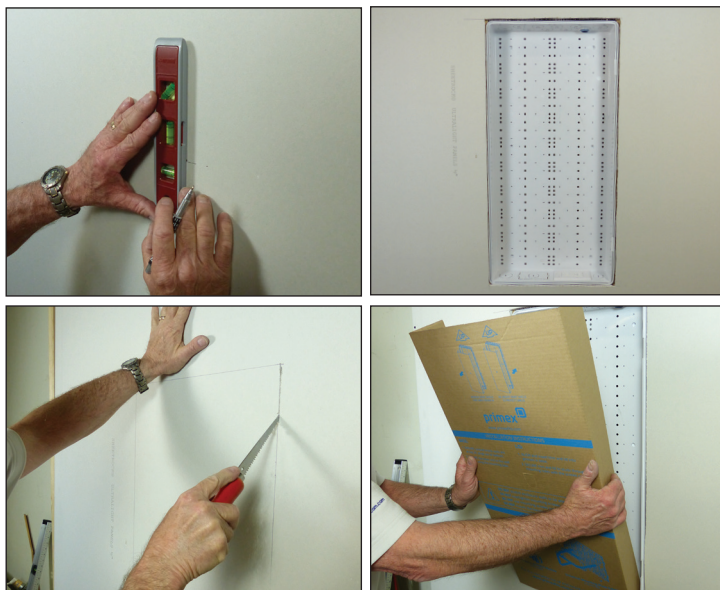
Measure distances from edges of enclosure to outside of adjacent studs, floor and ceiling.



STEP 6

Measure, mark, cut and mount drywall

Use measurements from step 5 to mark out drywall. Cut out marked area of drywall. Fit drywall over top of the installed enclosure base and secure.



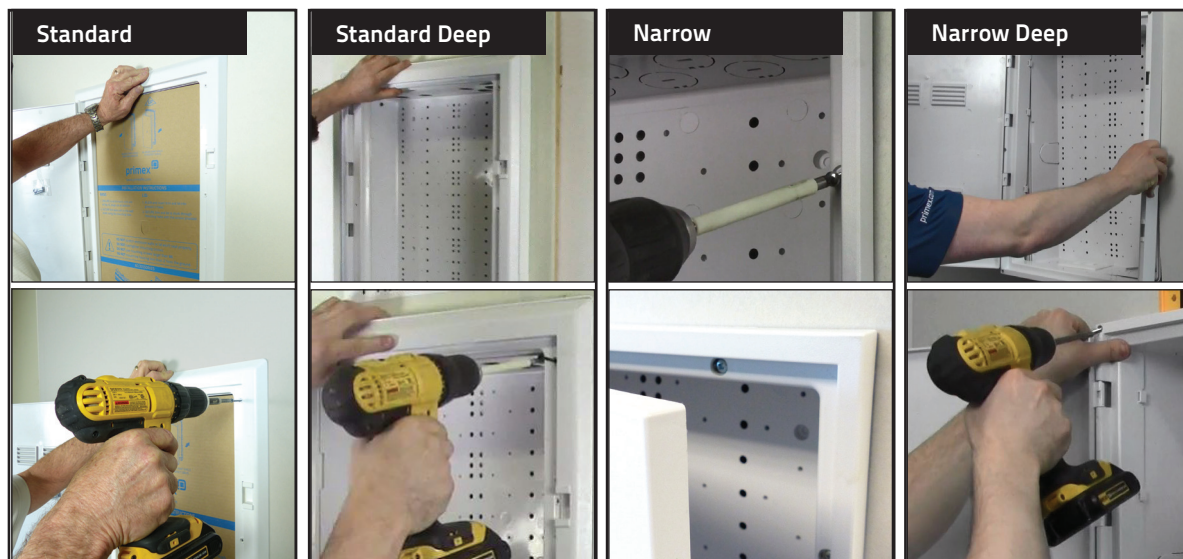
STEP 7

Paint drywall and affix enclosure lid

Place paintshield, paint drywall, and install lid and frame.

Media Panel options:

- **Standard** with wide lip to cover drywall cut imperfections
- **Standard deep** (frame extender) retrofit to add 1" more depth
- **Narrow** for shared stud side-by-side mounting and tight corners
- **Narrow deep** for shared stud, tight corners and 1" additional depth



STEP 8


Finish installation

Remove paintshield and install accessories for equipment mounting.



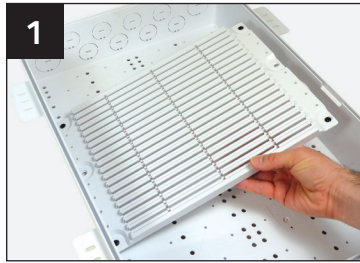
FOR MORE INFORMATION CONTACT:

📞 1.604.881.7875 📠 1.604.881.7835

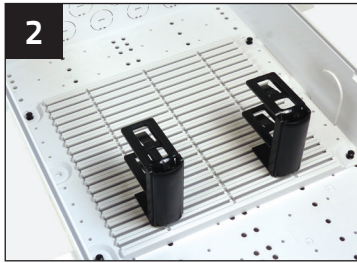
www.primex.com     

Rail Mounting System (RMS)

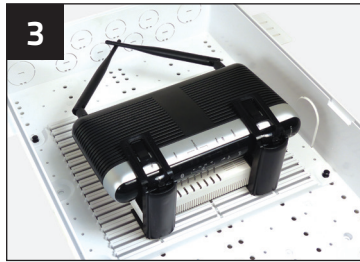
*Max mounted component thickness of 3.3"



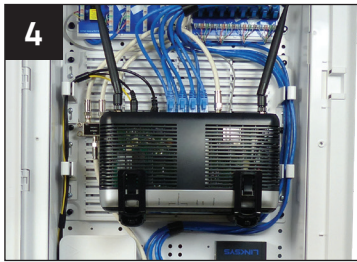
Determine placement of RMP and press pushpins to lock in place.



Slide brackets into place from the side of the mounting plate.



Place component and press bracket arm to hold securely.



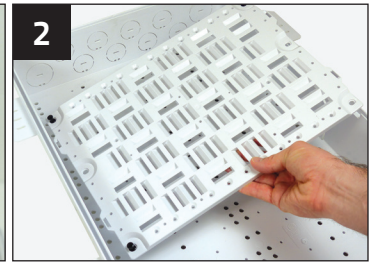
Recommended load 5lbs (2.27kg)
Place in heavier equipment first.

Universal Mounting System (UMS)

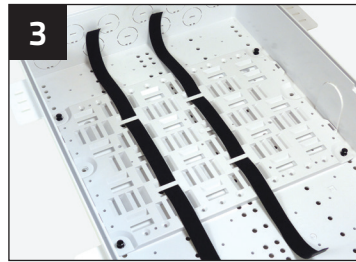
*Recommended load 5lbs (2.27kg)



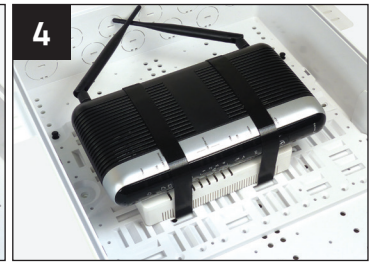
Pre-insert up to six pushpins into UMS before placement.



Determine placement of UMS and depress pushpins to lock in place.

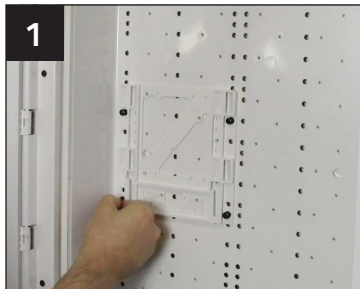


Determine placement location of component, cut tape, and thread.



Pull tape and affix to hold and ensure component is secure.

Shelf Mounting System (SMS)



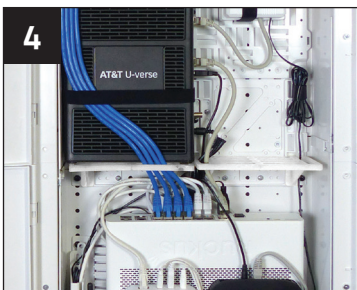
Insert push pins to affix SMS to the Media Panel.



Mount shelf into place and secure.



Optional mounting tape to secure hardware. (not included)



Can be installed side by side and act as a service divider.

SOHO Pro™ Hex Lock

(P/N: 125-1678)



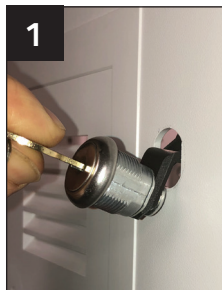
Insert hex lock with cam facing upwards.



Press in.

SOHO Pro™ Key Lock

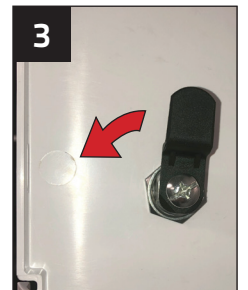
(P/N: 125-1073)



Install cylinder lock.



Thread on mounting nut.



Install lock cam.

*Installation Videos can be found at www.primex.com.

FOR MORE INFORMATION CONTACT:

☎ 1.604.881.7875 📠 1.604.881.7835

www.primex.com

PRIMEX Accessories

SOHOpro™ Media Panel

P2100, P3000, P4200, P6300

| Product | Description | Part # |
|---------|--|--|
| | Key Lock (1pc) | 125-1073 |
| | Hex Lock (1pc) | 125-1678 |
| | Retrofit Frame Extender, P2100 (20/box) Retrofit Frame Extender, P3000 (12/box) Retrofit Frame Extender, P4200 (12/box) | 125-1532 125-1533 125-1534 |
| | Rail Mounting System (RMS) 7" RMP w/RMB2(x2), pushpins (x10) 7" RMP w/RMB(x2), pushpins (x10) 7" RMP w/RMK(x2), pushpins (x10) 10" RMP w/RMB2(x4), pushpins (x10) 10" RMP w/RMB(x4), pushpins (x10) 10" RMP w/RMB2(x2)/RMK(x2), pushpins (x10) | 125-1655 125-1656 125-1657 125-1658 125-1659 125-1660 |
| | Universal Mounting System (UMS) Universal Mounting Plate (UMP) 10" UMP w/5' tape, pushpins (x10) | 125-0770 125-1623 |
| | Shelf Mounting System (SMS) SMS Shelf (single), 2' mounting tape, 10x pushpins SMS Shelf (single), 10x pushpins SMS 'Service Divider' Kit (dual), 10x pushpins SMS Shelf (bulk/18), 5' mounting tape, 10x pushpins | 125-1729 125-1541 125-1542 125-1522 |
| | 33' Roll Of Mounting Tape 10' Roll Of Mounting Tape | 125-0779 125-1274 |
| | Mounting Plate Pushpins (100/bag) Mounting Plate Pushpins (10/bag) | 125-0829 125-1535 |
| | 8-Port Cat5e Data Module 8-Port Cat6 Data Module 8-Port Voice RJ31x Module 6-Port Cat6a Data Module 8-Port Voice Cat6 w/RJ45 Module 1x8 Port 4 Line w/RJ45 Voice Module | 125-0986 125-1035 125-0987 125-0975 125-0977 125-0976 |
| | Cat6/Coax Combo Module Cat6A/Coax Combo Module Triple Play Combo Module (Cat6/Voice/Data) 1X8 RJ45 w/1X8 Splitter Combo Module | 125-1665 125-1666 125-1667 125-1750 |
| | 2-Way Coax Splitter (horizontal) 4-Way Coax Splitter (vert/horiz) 6-Way Coax Splitter (vert/horiz) 8-Way Coax Splitter (vert/horiz) | 125-1661 125-1574 125-1575 125-1576 |
| | Electrical Installation Kit 360° Electrical Rotating Outlet | 125-1355 125-1547 |

| Product | Description | Part # |
|---------|---|--|
| | Cat5e, 110 IDC, 90° HD Cat5e, 110 IDC, 180° HD Cat6, 110 IDC, 90° HD Cat6, 110 IDC, 180° HD Cat6A, 180°, Unshielded Cat6A, 180°, Shielded | 125-0949-WT 125-0948-WT 125-0947-WT 125-0946-WT 125-1628-WT 125-1629-WT |
| | 3-Line RJ12 Voice Jack | 125-0959-WT |
| | SC/APC Fiber Keystone w/Shutter | 125-0908 |
| | Cat5e coupler, HD Cat6 coupler, HD RG12 coupler, HD | 125-1266-WT 125-1267-WT 125-1268-WT |
| | F-Connector Keystone | 125-0961 |
| | Blank keystone | 125-0960-WT |
| | Customer Premise Outlet (CPO4), 4-Port | 125-0911 |
| | Single-Gang Wall Plate, 1-Port Single-Gang Wall Plate, 2-Port Single-Gang Wall Plate, 3-Port Single-Gang Wall Plate, 4-Port | 125-0957-WT 125-0958-WT 125-0955-WT 125-0956-WT |
| | Decorative Wall Jack, 1-Port Decorative Wall Jack, 2-Port Decorative Wall Jack, 3-Port Decorative Wall Jack, 4-Port Decorative Wall Plate | 125-0951-WT 125-0952-WT 125-0953-WT 125-0954-WT 125-0950-WT |
| | Oversize Wall Plate, 1-Port, Glossy Oversize Wall Plate, 2-Port, Glossy Oversize Wall Plate, 3-Port, Glossy Oversize Wall Plate, 4-Port, Glossy Oversize Wall Plate, 6-Port, Glossy | 125-1241-WT 125-1236-WT 125-1242-WT 125-1243-WT 125-1244-WT |
| | Oversize Wall Plate, 2-Port, W/Cat6 & Coax, Glossy | 125-1288-WT |
| | Oversize Wall Plate, 2-Port, W/Cat6 & Coax, Textured | 125-1237-WT |
| | Single-Gang Angled Wall Plate, 2-Port | 125-0984-WT |
| | Fiber Transition Case (FTC2) FTC2 - Standard FTC2 - w/ SC/APC fiber adapter FTC2 - w/angled shutter SC/APC adapter | 125-1778 125-1828 125-1827 |
| | Fiber Transition Outlet (FTO) FTO-w/1 SC/APC Adapter FTO-w/Integrated Splice Tray | 125-0889 125-0879 |
| | Hurricane Clip (12/pk) | 125-0239 |
| | 3/4"-1/2" Reducer 1"-3/4" Reducer | 125-1022 125-0936 |

FOR MORE INFORMATION CONTACT:

📞 1.604.881.7875 📠 1.604.881.7835

www.primex.com

primex Fit everything. Together.