

LINE-UP OVERVIEW



STANDARD ANALYTICS
4, 5, 8MP [4K], Motorized / Fixed, Intrusion, Object Removal

GEN. IV ANALYTICS
4, 8MP [4K], Motorized / Fixed, Target Counting, Face Detection

KNIGHT GUARD FULL COLOR
5MP, Fixed, Rich Color in Total Darkness, Gen. IV Analytics

ACTIVE DETERRENCE
4MP, Motorized / Fixed, Red & Blue Flashing Light, Sonic Alert

PERI-CAMS & 360° CAMERAS
6, 8, 16MP, Fixed, All-in-One Solutions for Large-Areas

PTZs WITH AUTOTRACKING
4, 8MP [4K], 165°~1600' IR Range, Gen. IV, 4~37 x Zoom

LICENSE PLATE RECOGNITION
Motorized, 10,000 Plate White List, 23~99' LPR, ≤75mph

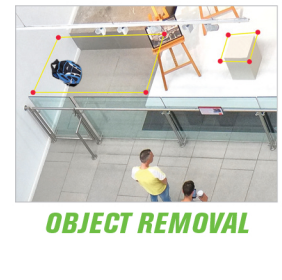
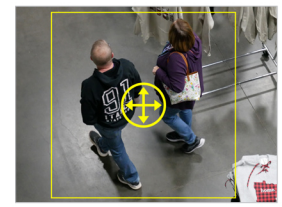
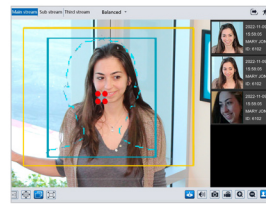
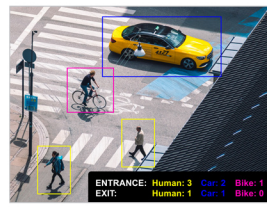
NVRs w/ GEN. IV ADVANCED A.I.
4~128ch, ≤256TB, Enterprise Models w/ RAID, De-Warp

ANALYTIC FEATURES



INTELLIGENT ANALYTICS

An Eye On Innovation



888-VITEK-70 | www.vitekccv.com



MODEL	CAMERA TYPE	LENS	IR*	KEY FEATURES	J-BOX	OPTIONAL MOUNTS
VTC-TNB4FLN-2	4MP Fixed Bullet	2.8mm	100'	Standard Analytics	● VT-TJB08	VT-TPLMT+VT-TJB08, VT-TCNMT+VT-TJB08
VTC-TNT4FLN-2	4MP Fixed Turret	2.8mm	100'	Standard Analytics	● VT-TJB01, VT-TJB08	VT-TWMT-3, VT-TPDM-2+VT-TJB01
VTD-TND4FLN-2	4MP Fixed Vandal Dome	2.8mm	100'	Standard Analytics	● VT-TJB03A	VT-TWMT-3, VT-TPDM-1+VT-TJB03A, VT-TFMT-S
VTC-TNB5RFEA-2	5MP Fixed Bullet	2.8mm	100'	Standard Analytics	● VT-TJB08	VT-TPLMT+VT-TJB08, VT-TCNMT+VT-TJB08
VTC-TNT5RFEA-2	● 5MP Fixed Turret	2.8mm	100'	Standard Analytics	● VT-TJB01, VT-TJB08	VT-TWMT-3, VT-TPDM-2+VT-TJB01
VTD-TND5RFEA-2	● 5MP Fixed Vandal Dome	2.8mm	100'	Standard Analytics	● VT-TJB03A	VT-TWMT-3, VT-TPDM-1+VT-TJB03A, VT-TFMT-S
VTC-TNB5RMEA	● 5MP Mtrzd AF Bullet	2.8~12mm	165'	Standard Analytics	● VT-TJB08	VT-TPLMT+VT-TJB08, VT-TCNMT+VT-TJB08
VTC-TNT5RMEA	● 5MP Mtrzd AF Turret	2.8~12mm	165'	Standard Analytics	● VT-TJB01, VT-TJB021	VT-TWM03, VT-TWMT-4, VT-TPDM-2+VT-TJB01, VT-TPDM-3+VT-TJB021
VTD-TND5RMEA	● 5MP Mtrzd AF Vandal Dome	2.8~12mm	165'	Standard Analytics	● VT-TJB010	VT-TWMT-A2+VT-TJB010, VT-TPDMT-A2+VT-TJB010, VT-TFMT-L2
VTD-TNMD4RFAA-2	4MP Fixed Saucer Dome	2.8mm	65'	Gen IV Analytics	● N/A	VT-TWMT-3
VTC-TNB4RFAA-2	● 4MP Fixed Bullet	2.8/3.6mm	● 100'	Gen IV Analytics	● VT-TJB08	VT-TPLMT+VT-TJB08, VT-TCNMT+VT-TJB08
VTC-TNT4RFAA-2	● 4MP Fixed Turret	2.8/3.6mm	● 100'	Gen IV Analytics	● VT-TJB01, VT-TJB08	VT-TWMT-3, VT-TPDM-2+VT-TJB01, VT-TWMT-A2+VT-TJB08
VTD-TND4RFAA-2	● 4MP Fixed Vandal Dome	2.8/3.6mm	● 100'	Gen IV Analytics	● VT-TJB03A	VT-TWMT-3, VT-TPDM-1+VT-TJB03A, VT-TFMT-S
VTC-TNB4RMA4	● 4MP Mtrzd AF Bullet	2.8~12mm	165'	Gen IV Analytics	● VT-TJB08	VT-TPLMT+VT-TJB08, VT-TCNMT+VT-TJB08
VTC-TNT4RMA4	● 4MP Mtrzd AF Turret	2.8~12mm	165'	Gen IV Analytics	● VT-TJB01, VT-TJB021	VT-TWM03, VT-TWMT-4, VT-TPDM-2+VT-TJB01, VT-TPDM-3+VT-TJB021
VTD-TND4RMA4	● 4MP Mtrzd AF Vandal Dome	2.8~12mm	165'	Gen IV Analytics	● VT-TJB010	VT-TWMT-A2+VT-TJB010, VT-TPDMT-A2+VT-TJB010, VT-TFMT-L2
VTC-TNB8RFEA-2	● 8MP Fixed Bullet	2.8mm	100'	4K, Standard Analytics	● VT-TJB08	VT-TPLMT+VT-TJB08, VT-TCNMT+VT-TJB08
VTC-TNT8RFEA-2	● 8MP Fixed Turret	2.8mm	100'	4K, Standard Analytics	● VT-TJB01, VT-TJB08	VT-TWMT-3, VT-TPDM-2+VT-TJB01
VTD-TND8RFEA-2	● 8MP Fixed Vandal Dome	2.8mm	100'	4K, Standard Analytics	● VT-TJB03A	VT-TWMT-3, VT-TPDM-1+VT-TJB03A, VT-TFMT-S
VTC-TNB8RMEA	8MP Mtrzd AF Bullet	2.8~12mm	165'	4K, Standard Analytics	● VT-TJB08	VT-TPLMT+VT-TJB08, VT-TCNMT+VT-TJB08
VTC-TNT8RMEA	● 8MP Mtrzd AF Turret	2.8~12mm	165'	4K, Standard Analytics	● VT-TJB01, VT-TJB021	VT-TWM03, VT-TWMT-4, VT-TPDM-2+VT-TJB01, VT-TPDM-3+VT-TJB021
VTD-TND8RMEA	● 8MP Mtrzd AF Vandal Dome	2.8~12mm	165'	4K, Standard Analytics	● VT-TJB010	VT-TWMT-A2+VT-TJB010, VT-TPDMT-A2+VT-TJB010, VT-TFMT-L2
VTC-TNB8RFAA-2	● 8MP Fixed Bullet	2.8mm	100'	4K, Gen IV Analytics	● VT-TJB08	VT-TPLMT+VT-TJB08, VT-TCNMT+VT-TJB08
VTC-TNT8RFAA-2	● 8MP Fixed Turret	2.8mm	100'	4K, Gen IV Analytics	● VT-TJB01, VT-TJB08	VT-TWMT-3, VT-TPDM-2+VT-TJB01
VTD-TND8RFAA-2	● 8MP Fixed Vandal Dome	2.8mm	100'	4K, Gen IV Analytics	● VT-TJB03A	VT-TWMT-3, VT-TPDM-1+VT-TJB03A, VT-TFMT-S
VTC-TNB8RMA4	● 8MP Mtrzd AF Bullet	2.8~12mm	230'	4K, Gen IV Analytics	● VT-TJB01	VT-TPLMT+VT-TJB01, VT-TCNMT+VT-TJB01
VTC-TNT8RMA4	● 8MP Mtrzd AF Turret	2.8~12mm	165'	4K, Gen IV Analytics	● VT-TJB01, VT-TJB021	VT-TWM03, VT-TWMT-4, VT-TPDM-2+VT-TJB01, VT-TPDM-3+VT-TJB021
VTD-TND8RMA4	● 8MP Mtrzd AF Vandal Dome	2.8~12mm	165'	4K, Gen IV Analytics	● VT-TJB010	VT-TWMT-A2+VT-TJB010, VT-TPDMT-A2+VT-TJB010, VT-TFMT-L2
VTC-TNB4LPRN	4MP LPR Bullet	8~32mm	325'	23~99' LPR, ≤75mph	● VT-TJB01	VT-TPLMT+VT-TJB01, VT-TCNMT+VT-TJB01
VTC-TNB5WFC-2	5MP Knight Guard Bullet	2.8mm	100'	Gen IV, Full Color at Night	● VT-TJB08	VT-TPLMT+VT-TJB08, VT-TCNMT+VT-TJB08
VTC-TNT5WFC-2	5MP Knight Guard Turret	2.8mm	100'	Gen IV, Full Color at Night	● VT-TJB01, VT-TJB08	VT-TWMT-3, VT-TPDM-2+VT-TJB01
VTC-TNB4RFAD-2	4MP Fixed AD Bullet	2.8mm	165'	Active Deterrence	● VT-TJB08	VT-TPLMT+VT-TJB08, VT-TCNMT+VT-TJB08
VTC-TNT4RFAD-2	4MP Fixed AD Turret	2.8mm	165'	Active Deterrence	● VT-TJB01, VT-TJB021	VT-TWM03, VT-TWMT-4, VT-TPDM-2+VT-TJB01, VT-TPDM-3+VT-TJB021
VTC-TNB4RMAD	4MP Mtrzd AF AD Bullet	2.8~12mm	165'	Active Deterrence	● VT-TJB08	VT-TPLMT+VT-TJB08, VT-TCNMT+VT-TJB08
VTC-TNT4RMAD	4MP Mtrzd AF AD Turret	2.8~12mm	165'	Active Deterrence	● VT-TJB01, VT-TJB021	VT-TWM03, VT-TWMT-4, VT-TPDM-2+VT-TJB01, VT-TPDM-3+VT-TJB021
VTD-TND6FPN	6MP 360° Vandal Dome	1.1mm	100'	Fisheye Camera	● VT-TJB-F1	VT-TWM-F, VT-TPDM-F
VTC-TNB8X4MS	8MP 180° Peri-Cam Bullet	4 x 3.3mm	85'	4x2MP Multi-Sensor	● VT-TJB010 (Included)	VT-TPLMT-W or VT-TCNMT-W [+ VT-TJB010]
VTC-TNB16X4MS	16MP 180° Peri-Cam Bullet	4 x 4.5mm	60'	4x4MP Multi-Sensor	● VT-TJB010 (Included)	VT-TPLMT-W or VT-TCNMT-W [+ VT-TJB010]
VTD-TND16X8MS	16MP 360° Vandal Dome	8 x 3.3mm	65'	8x2MP Multi-Sensor	● N/A	VT-TPT20HR-PM, VT-TWM36 (39" Wall Mount), VT-TPLM36, VT-TCNM36
VT-TPTZ4AD-4M	4MP Active Det. Mini PTZ	2.8~12mm	165'	2MP IV, Auto-Tracking	● VT-TJB-F1	VT-TWMT-4-W, VT-TWM-F, VT-TPDM-F, VT-TPLMT-W or VT-TCNMT-W [+VT-TWM-F]
VT-TPTZ25HRAN-4PNL	4MP 25X AutoZoom PTZ	4.8~120mm	525'	Gen IV, Auto-Tracking	● N/A	VT-TPT20HR-FM, VT-TPT23HR-WM, VT-TPT20HR-PM, VT-TPLMT-W, VT-TCNMT-W
VT-TPTZ25HRAN-8PNL	8MP 25X AutoZoom PTZ	4.8~120mm	525'	4K, Gen IV, Auto-Tracking	● N/A	VT-TPT20HR-FM, VT-TPT23HR-WM, VT-TPT20HR-PM, VT-TPLMT-W, VT-TCNMT-W
VT-TPTZ37HRA-4PNS	4MP 37X AutoZoom PTZ	5.6~208mm	1640'	Gen III, Auto-Tracking	● N/A	VT-TPT20HR-PM, VT-TPT37HR-WM (Inc'd), VT-TPT23HR-WM, VT-TPLMT-W, VT-TCNMT-W
VT-TPTZ32HRAN-8PNS	8MP 32X AutoZoom PTZ	4.5~154mm	600'	4K, Gen IV, Auto-Tracking	● N/A	VT-TPT20HR-PM, VT-TPT23HR-WM, VT-TPLMT-W, VT-TCNMT-W

● Charcoal Option Available [Add "B" to Model Number] ● Remove "-2" for 3.6mm Version ● IP67 ● IP66 ● IK10 ● Speaker Sound ● PoE+ ● PoE++
Gen. IV / III A.I.: Entry / Exit & Target Counting [by Human / Vehicle Classification], Face Detection & More! *Matrix IR on all models except Full Color at Night (White Light), and 180° & 360° Models (SMD Type IRs)
LPR = License Plate Recognition. All Models are NDA Compliant Except: VTC-TNB8X4MS, VTC-TNB16X4MS, VTD-TND16X8MS, VT-TPTZ37HRA-4PNS, VT-TNR6480E1, VT-TNV6416E1, & VT-TNV128E1

NVR	IPC RES.	IP CHs.	PoE	MAX HDD	KEY FEATURES
VT-TNR414PN	8MP	4-Ch	4	12TB	4K, Analytics: Basic Face Detection, Object Missing, Intrusion, Tripwire, Exception, Human / Vehicle Classification, LPR, De-Warp through IE
VT-TNR818PN	8MP	8-Ch	8	12TB	4K, Analytics: Basic Face Detection, Object Missing, Intrusion, Tripwire, Exception, Human / Vehicle Classification, LPR, De-Warp through IE
VT-TNR1626PN	8MP	16-Ch	16	24TB	4K, Analytics: Basic Face Detection, Object Missing, Intrusion, Tripwire, Exception, Human / Vehicle Classification, LPR, De-Warp through IE
VT-TNR818PFN	12MP	8-Ch	8	12TB	4K+, Gen. IV Advanced Analytics Including Face Detection / Recognition, Abnormal Video, Target Counting, LPR, De-Warp through IE
VT-TNR1646PFN	12MP	16-Ch	16	48TB	4K+, Gen. IV Advanced Analytics Including Face Detection / Recognition, Abnormal Video, Target Counting, LPR, De-Warp through IE
VT-TNR3216PFN	12MP	32-Ch	16	96TB	4K+, Gen. IV Advanced Analytics: Face Detection / Recognition, Abnormal Video, Target Counting, LPR, De-Warp through IE
VT-TNR3280E1N	12MP	32-Ch	N/A	96TB	4K+, Gen. IV Advanced Analytics: Face Det. / Rec., Abnormal Video, Target Counting, LPR, De-Warp through IE, RAID 0, 1, 5, 6 & 10 + E-Sata
VT-TNR6480E1	12MP	64-Ch	N/A	96TB	4K+, Gen. IV Advanced Analytics: Abnormal Video, Target Counting, LPR, De-Warp through IE, RAID 0, 1, 5, 6 & 10 + E-Sata
VT-TNV6416E1	12MP	64-Ch	N/A	192TB	4K+, Gen. IV Analytics: Face Det / Rec, Target Counting, Intrusion, Region Entrance / Exit, Line Crossing, RAID 0, 1, 5, 6 & 10 + E-Sata
VT-TNV128E1	12MP	128-Ch	N/A	192TB	4K+, Gen. IV Analytics: Face Det / Rec, Target Counting, Intrusion, Region Entrance / Exit, Line Crossing, RAID 0, 1, 5, 6 & 10 + E-Sata

An Eye On Innovation

888-VITEK-70 | www.vitekccv.com

